

Unemployment Insurance Claimant Characteristics

March 2016



Communications & Research Bureau

Industry	March 2016	February 2015	Monthly Difference	March 2015	Yearly Difference
23-Construction	1,763 19%	2,644 20%	-881	1,868 16%	-105
56-Admin. & Support & Waste Mgt	1,098 12%	1,670 13%	-572	1,472 13%	-374
31-33 Manufacturing	1,010 11%	1,358 10%	-348	1,305 11%	-295
11-Agriculture & Forestry	970 10%	1,082 8%	-112	769 7%	201
44-45-Retail Trade	814 9%	1,040 8%	-226	916 8%	-102
62-Health Care & Social Assistance	628 7%	684 5%	-56	705 6%	-77
48-49 Transp & Warehousing	455 5%	427 3%	28	376 3%	79
72-Accommodation & Food Services	418 4%	504 4%	-86	563 5%	-145
42-Wholesale Trade	396 4%	516 4%	-120	421 4%	-25
54-Prof, Scientific, & Tech. Svcs	374 4%	436 3%	-62	432 4%	-58
92-Public Administration	324 3%	405 3%	-81	332 3%	-8
71-Arts, Entertainment & Recreation	199 2%	300 2%	-101	240 2%	-41
81-Other Services (ex Public Admin)	192 2%	222 2%	-30	228 2%	-36
52-Finance & Insurance	183 2%	206 2%	-23	238 2%	-55
61-Educational Services	116 1%	138 1%	-22	156 1%	-40
53-Real Estate & Rental & Leasing	114 1%	142 1%	-28	143 1%	-29
21-Mining	106 1%	261 2%	-155	289 3%	-183
51-Information	98 1%	127 1%	-29	121 1%	-23
22-Utilities	33 0%	70 1%	-37	30 0%	3
55-Mgt of Companies & Enterprises	14 0%	16 0%	-2	34 0%	-20
INA*	1 0%	831 6%	-830	742 7%	-741
Total	9,306	13,079	-3,773	11,380	-2,074

Occupations	March 2016	February 2015	Monthly Difference	March 2015	Yearly Difference
47-Construction & Extraction	1,818 20%	3,097 24%	-1,279	2,000 18%	-182
45-Farming, Fishing & Forestry	1,202 13%	1,498 11%	-296	1,058 9%	144
53-Transp & Mat Moving	863 9%	1,147 9%	-284	1,067 9%	-204
41-Sales & related	713 8%	839 6%	-126	620 5%	93
43-Office & Admin Support	660 7%	812 6%	-152	1,212 11%	-552
51-Production	594 6%	866 7%	-272	902 8%	-308
37-Bld & Grd Cleaning & Maint	568 6%	944 7%	-376	548 5%	20
35-Food Prep & Related	452 5%	547 4%	-95	546 5%	-94
49-Install, Mainte & Repair	426 5%	666 5%	-240	471 4%	-45
11-Management	366 4%	477 4%	-111	561 5%	-195
31-Healthcare Support	208 2%	214 2%	-6	146 1%	62
13-Business Financial	207 2%	234 2%	-27	202 2%	5
15-Computer Math	133 1%	116 1%	17	8 0%	125
29-Healthcare Pract & Tech	119 1%	127 1%	-8	123 1%	-4
39-Personal Care & Svcs	118 1%	142 1%	-24	189 2%	-71
25-Ed Training & Library	97 1%	124 1%	-27	105 1%	-8
21-Community & Social Svcs	86 1%	108 1%	-22	73 1%	13
17-Architect & Engineer	85 1%	137 1%	-52	126 1%	-41
27-Art Design, Entert Spt & Media	84 1%	105 1%	-21	62 1%	22
33-Protective Svcs	75 1%	100 1%	-25	132 1%	-57
19-Life Phys Social	36 0%	59 0%	-23	93 1%	-57
23-Legal	28 0%	27 0%	1	24 0%	4
55-Military Specific	11 0%	13 0%	-2	5 0%	6
INA*	357 4%	680 5%	-323	1,107 10%	-750
Total	9,306	13,079	-3,773	11,380	-2,074

** This data reflects UI claims characteristics for the pay period including the 12th of the month.

Unemployment Insurance Claimant Characteristics

March 2016



Communications & Research Bureau

Demographics	March 2016		February 2015		Monthly Difference	March 2015		Yearly Difference
Gender:								
Male	6,370	68.5%	9,495	72.6%	(3,125)	7,539	66.2%	-1169
Female	2,936	31.5%	3,580	27.4%	(644)	3,840	33.7%	-904
INA	0	0.0%	4	0.0%	(4)	1	0.0%	-1
Total	9,306		13,079		(3,773)	11,380		-2074
Race: NOTE: Claimants may choose more than one Race category								
Native American	349	N/A	424	N/A	(75)	590	N/A	-241
Asian	79	N/A	159	N/A	(80)	172	N/A	-93
African American	100	N/A	130	N/A	(30)	163	N/A	-63
Pacific Islander	53	N/A	90	N/A	(37)	116	N/A	-63
White	11,372	N/A	9,971	N/A	1,401	15,145	N/A	-3773
INA	2,109	N/A	2,614	N/A	(505)	3,296	N/A	-1187
Ethnicity:								
Hispanic/Latino	1,251	13.4%	2,048	15.7%	(797)	1,500	13.2%	-249
Non-Hispanic/Latino	6,405	68.8%	8,146	62.3%	(1,741)	8,688	76.3%	-2283
INA	1,650	17.7%	2,885	22.1%	(1,235)	1,192	10.5%	458
Age:								
<22	274	2.9%	390	3.0%	(116)	254	2.2%	20
22-24	429	4.6%	578	4.4%	(149)	524	4.6%	-95
25-34	1,992	21.4%	2,670	20.4%	(678)	2,216	19.5%	-224
35-44	1,941	20.9%	2,538	19.4%	(597)	2,247	19.7%	-306
45-54	2,188	23.5%	3,026	23.1%	(838)	2,746	24.1%	-558
55-59	1,141	12.3%	1,565	12.0%	(424)	1,367	12.0%	-226
60-64	810	8.7%	1,025	7.8%	(215)	942	8.3%	-132
>=65	500	5.4%	1,220	9.3%	(720)	1,082	9.5%	-582
Total	9,275		13,012		(3,737)	11,378		-2103

**Unemployment Insurance
Claimant Characteristics
March 2016**



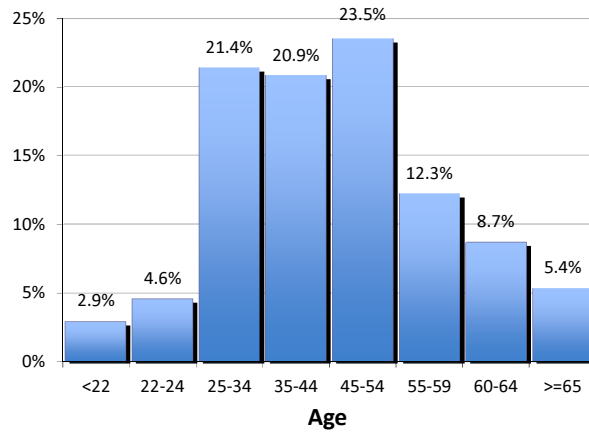
Communications & Research Bureau

Gender of the Insured Unemployed

Male	6,370	68.5%
Female	2,936	31.5%
N/A	0	0.0%
Total	9,306	100%

Age of the Insured Unemployed

<22	274	2.9%
22-24	429	4.6%
25-34	1,992	21.4%
35-44	1,941	20.9%
45-54	2,188	23.5%
55-59	1,141	12.3%
60-64	810	8.7%
>=65	500	5.4%
INA	31	INA
Total	9,306	100%



Race of the Insured Unemployed

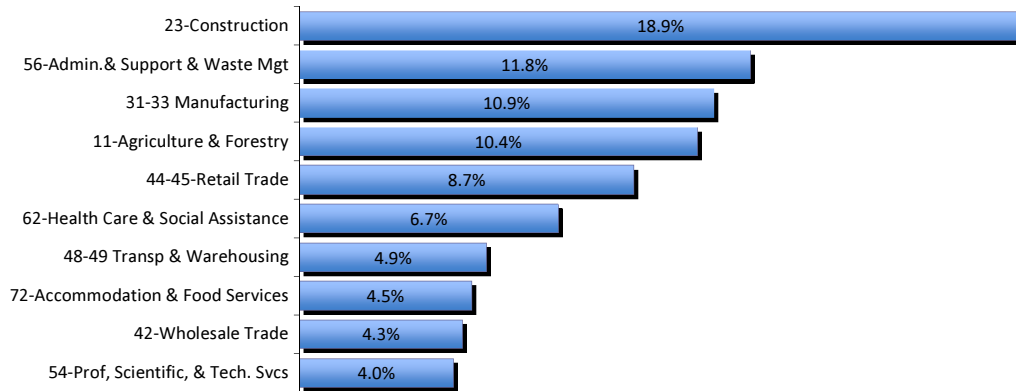
Native Am.	349	2.5%
Asian	79	0.6%
African Am.	100	0.7%
Pacific Islander	53	0.4%
White	11,372	80.9%
INA	2,109	15.0%
* Total	14,062	100%

Ethnicity of the Insured Unemployed

Hispanic/Latino	1,251	13.4%
Non-Hispanic/Latino	6,405	68.8%
INA	1,650	17.7%
Total	9,306	100.0%

* Some Claimants choose more than one race category

What industries did the claimants work in?



What occupations did the claimants hold?

