

# Unemployment Insurance Claimant Characteristics

April 2016



Communications & Research Bureau

Industry	April 2016		March 2015		Monthly Difference	April 2015		Yearly Difference
23-Construction	968	13%	1,763	19%	-795	1,003	11%	-35
31-33 Manufacturing	848	11%	1,010	11%	-162	1,121	13%	-273
44-45-Retail Trade	671	9%	814	9%	-143	738	8%	-67
56-Admin. & Support & Waste Mgt	663	9%	1,098	12%	-435	978	11%	-315
11-Agriculture & Forestry	589	8%	970	10%	-381	603	7%	-14
62-Health Care & Social Assistance	574	8%	628	7%	-54	663	7%	-89
48-49 Transp & Warehousing	450	6%	455	5%	-5	462	5%	-12
42-Wholesale Trade	401	5%	396	4%	5	395	4%	6
72-Accommodation & Food Services	353	5%	418	4%	-65	500	6%	-147
54-Prof, Scientific, & Tech. Svcs	309	4%	374	4%	-65	326	4%	-17
92-Public Administration	179	2%	324	3%	-145	197	2%	-18
52-Finance & Insurance	167	2%	183	2%	-16	222	3%	-55
21-Mining	159	2%	106	1%	53	257	3%	-98
81-Other Services (ex Public Admin)	154	2%	192	2%	-38	194	2%	-40
53-Real Estate & Rental & Leasing	106	1%	114	1%	-8	112	1%	-6
71-Arts, Entertainment & Recreation	101	1%	199	2%	-98	144	2%	-43
61-Educational Services	97	1%	116	1%	-19	152	2%	-55
51-Information	94	1%	98	1%	-4	90	1%	4
55-Mgt of Companies & Enterprises	19	0%	14	0%	5	41	0%	-22
22-Utilities	15	0%	33	0%	-18	23	0%	-8
INA*	624	8%	1	0%	623	643	7%	-19
<b>Total</b>	<b>7,541</b>		<b>9,306</b>		<b>-1,765</b>	<b>8,864</b>		<b>-1,323</b>

Occupations	April 2016		March 2015		Monthly Difference	April 2015		Yearly Difference
47-Construction & Extraction	1,244	16%	1,818	20%	-574	1,228	14%	16
45-Farming, Fishing & Forestry	727	10%	1,202	13%	-475	673	8%	54
41-Sales & related	666	9%	713	8%	-47	526	6%	140
53-Transp & Mat Moving	655	9%	863	9%	-208	887	10%	-232
51-Production	594	8%	594	6%	0	822	9%	-228
43-Office & Admin Support	583	8%	660	7%	-77	1,096	12%	-513
35-Food Prep & Related	413	5%	452	5%	-39	463	5%	-50
11-Management	367	5%	366	4%	1	521	6%	-154
49-Install, Mainte & Repair	326	4%	426	5%	-100	375	4%	-49
13-Business Financial	222	3%	207	2%	15	186	2%	36
31-Healthcare Support	217	3%	208	2%	9	142	2%	75
37-Bld & Grd Cleaning & Maint	215	3%	568	6%	-353	277	3%	-62
15-Computer Math	170	2%	133	1%	37	13	0%	157
29-Healthcare Pract & Tech	141	2%	119	1%	22	107	1%	34
39-Personal Care & Svcs	106	1%	118	1%	-12	168	2%	-62
17-Architect & Engineer	103	1%	85	1%	18	99	1%	4
21-Community & Social Svcs	85	1%	86	1%	-1	66	1%	19
25-Ed Training & Library	83	1%	97	1%	-14	102	1%	-19
27-Art Design, Entert Spt & Media	73	1%	84	1%	-11	57	1%	16
33-Protective Svcs	53	1%	75	1%	-22	93	1%	-40
19-Life Phys Social	42	1%	36	0%	6	70	1%	-28
23-Legal	36	0%	28	0%	8	23	0%	13
55-Military Specific	10	0%	11	0%	-1	7	0%	3
INA*	410	5%	357	4%	53	863	10%	-453
<b>Total</b>	<b>7,541</b>		<b>9,306</b>		<b>-1,765</b>	<b>8,864</b>		<b>-1,323</b>

\*\* This data reflects UI claims characteristics for the pay period including the 12th of the month.

# Unemployment Insurance Claimant Characteristics

April 2016



Communications & Research Bureau

Demographics	April 2016		March 2015		Monthly Difference	April 2015		Yearly Difference
<b>Gender:</b>								
Male	4,787	63.5%	6,370	68.5%	(1,583)	5,516	62.2%	-729
Female	2,753	36.5%	2,936	31.5%	(183)	3,348	37.8%	-595
INA	1	0.0%	0	0.0%	1	0	0.0%	1
<b>Total</b>	<b>7,541</b>		<b>9,306</b>		<b>(1,765)</b>	<b>8,864</b>		<b>-1323</b>
<b>Race:</b> NOTE: Claimants may choose more than one Race category								
Native American	314	N/A	349	N/A	(35)	465	N/A	-151
Asian	101	N/A	79	N/A	22	140	N/A	-39
African American	99	N/A	100	N/A	(1)	134	N/A	-35
Pacific Islander	68	N/A	53	N/A	15	104	N/A	-36
White	9,125	N/A	11,372	N/A	(2,247)	11,723	N/A	-2598
INA	1,496	N/A	2,109	N/A	(613)	2,361	N/A	-865
<b>Ethnicity:</b>								
Hispanic/Latino	802	10.6%	1,251	13.4%	(449)	1,060	12.0%	-258
Non-Hispanic/Latino	4,972	65.9%	6,405	68.8%	(1,433)	6,623	74.7%	-1651
INA	1,767	23.4%	1,650	17.7%	117	1,181	13.3%	586
<b>Age:</b>								
<22	162	2.1%	274	2.9%	(112)	164	1.9%	-2
22-24	282	3.7%	429	4.6%	(147)	332	3.7%	-50
25-34	1,448	19.2%	1,992	21.4%	(544)	1,687	19.0%	-239
35-44	1,432	19.0%	1,941	20.9%	(509)	1,682	19.0%	-250
45-54	1,779	23.6%	2,188	23.5%	(409)	2,153	24.3%	-374
55-59	910	12.1%	1,141	12.3%	(231)	1,144	12.9%	-234
60-64	701	9.3%	810	8.7%	(109)	766	8.6%	-65
>=65	806	10.7%	500	5.4%	306	934	10.5%	-128
<b>Total</b>	<b>7,520</b>		<b>9,275</b>		<b>(1,755)</b>	<b>8,862</b>		<b>-1342</b>

# Unemployment Insurance Claimant Characteristics

April 2016



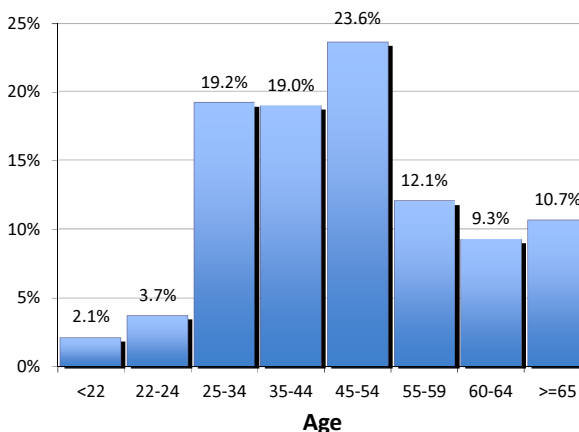
Communications & Research Bureau

## Gender of the Insured Unemployed

Male	4,787	63.5%
Female	2,753	36.5%
N/A	1	0.0%
<b>Total</b>	<b>7,541</b>	<b>100%</b>

## Age of the Insured Unemployed

<22	162	2.1%
22-24	282	3.7%
25-34	1,448	19.2%
35-44	1,432	19.0%
45-54	1,779	23.6%
55-59	910	12.1%
60-64	701	9.3%
>=65	806	10.7%
INA	21	INA
<b>Total</b>	<b>7,541</b>	<b>100%</b>



## Race of the Insured Unemployed

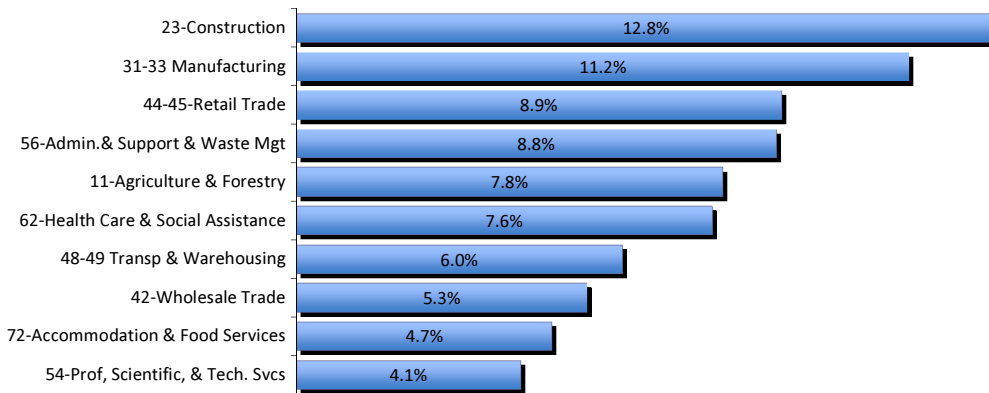
Native Am.	314	2.8%
Asian	101	0.9%
African Am.	99	0.9%
Pacific Islander	68	0.6%
White	9,125	81.5%
INA	1,496	13.4%
<b>* Total</b>	<b>11,203</b>	<b>100%</b>

## Ethnicity of the Insured Unemployed

Hispanic/Latino	802	10.6%
Non-Hispanic/Latino	4,972	65.9%
INA	1,767	23.4%
<b>Total</b>	<b>7,541</b>	<b>100.0%</b>

\* Some Claimants choose more than one race category

## What industries did the claimants work in?



## What occupations did the claimants hold?

