

# Unemployment Insurance Claimant Characteristics

September 2016



Communications & Research Bureau

Industry	September 2016		August 2015		Monthly Difference	September 2015		Yearly Difference
31-33 Manufacturing	850	16%	765	13%	85	778	14%	72
44-45-Retail Trade	519	10%	521	9%	-2	518	9%	1
62-Health Care & Social Assistance	508	10%	594	10%	-86	509	9%	-1
56-Admin.& Support & Waste Mgt	472	9%	546	10%	-74	604	11%	-132
23-Construction	421	8%	375	7%	46	526	9%	-105
54-Prof, Scientific, & Tech. Svcs	343	7%	344	6%	-1	307	5%	36
42-Wholesale Trade	289	6%	308	5%	-19	336	6%	-47
72-Accommodation & Food Services	229	4%	232	4%	-3	235	4%	-6
52-Finance & Insurance	173	3%	173	3%	0	174	3%	-1
48-49 Transp & Warehousing	154	3%	544	9%	-390	206	4%	-52
61-Educational Services	151	3%	136	2%	15	127	2%	24
92-Public Administration	144	3%	172	3%	-28	161	3%	-17
11-Agriculture & Forestry	100	2%	148	3%	-48	97	2%	3
81-Other Services (ex Public Admin)	98	2%	127	2%	-29	127	2%	-29
51-Information	89	2%	86	2%	3	85	2%	4
53-Real Estate & Rental & Leasing	52	1%	57	1%	-5	82	1%	-30
71-Arts, Entertainment & Recreation	52	1%	32	1%	20	57	1%	-5
21-Mining	51	1%	73	1%	-22	133	2%	-82
55-Mgt of Companies & Enterprises	19	0%	19	0%	0	20	0%	-1
22-Utilities	11	0%	10	0%	1	14	0%	-3
INA*	466	9%	471	8%	-5	549	10%	-83
<b>Total</b>	<b>5,191</b>		<b>5,733</b>		<b>-542</b>	<b>5,645</b>		<b>-454</b>

Occupations	September 2016		August 2015		Monthly Difference	September 2015		Yearly Difference
41-Sales & related	430	8%	637	11%	-207	395	7%	35
47-Construction & Extraction	366	7%	487	8%	-121	625	11%	-259
43-Office & Admin Support	357	7%	513	9%	-156	897	16%	-540
51-Production	346	7%	569	10%	-223	571	10%	-225
11-Management	250	5%	296	5%	-46	398	7%	-148
53-Transp & Mat Moving	202	4%	622	11%	-420	441	8%	-239
13-Business Financial	196	4%	261	5%	-65	202	4%	-6
35-Food Prep & Related	174	3%	340	6%	-166	239	4%	-65
49-Install, Mainte & Repair	153	3%	187	3%	-34	205	4%	-52
31-Healthcare Support	145	3%	209	4%	-64	88	2%	57
15-Computer Math	126	2%	167	3%	-41	8	0%	118
45-Farming, Fishing & Forestry	112	2%	209	4%	-97	211	4%	-99
17-Architect & Engineer	96	2%	88	2%	8	80	1%	16
29-Healthcare Pract & Tech	81	2%	122	2%	-41	102	2%	-21
37-Bld & Grd Cleaning & Maint	79	2%	112	2%	-33	145	3%	-66
25-Ed Training & Library	78	2%	186	3%	-108	90	2%	-12
21-Community & Social Svcs	69	1%	131	2%	-62	67	1%	2
39-Personal Care & Svcs	53	1%	91	2%	-38	100	2%	-47
27-Art Design, Entert Spt & Media	42	1%	58	1%	-16	65	1%	-23
19-Life Phys Social	33	1%	45	1%	-12	47	1%	-14
23-Legal	28	1%	32	1%	-4	36	1%	-8
33-Protective Svcs	22	0%	30	1%	-8	56	1%	-34
55-Military Specific	5	0%	8	0%	-3	3	0%	2
INA*	1,748	34%	333	6%	1,415	574	10%	1,174
<b>Total</b>	<b>5,191</b>		<b>5,733</b>		<b>-542</b>	<b>5,645</b>		<b>-454</b>

\*\* This data reflects UI claims characteristics for the pay period including the 12th of the month.

# Unemployment Insurance Claimant Characteristics

September 2016



Communications & Research Bureau

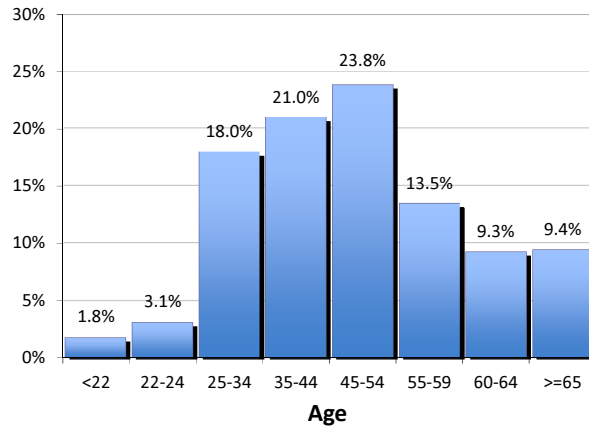
Demographics	September 2016		August 2015		Monthly Difference	September 2015		Yearly Difference
<b>Gender:</b>								
Male	2,813	54.2%	2,903	50.6%	(90)	3,081	54.6%	-268
Female	2,378	45.8%	2,829	49.3%	(451)	2,562	45.4%	-184
INA	0	0.0%	1	0.0%	(1)	2	0.0%	-2
<b>Total</b>	<b>5,191</b>		<b>5,733</b>		<b>(542)</b>	<b>5,645</b>		<b>-454</b>
<b>Race:</b> NOTE: Claimants may choose more than one Race category								
Native American	276	N/A	258	N/A	18	307	N/A	-31
Asian	139	N/A	125	N/A	14	143	N/A	-4
African American	102	N/A	104	N/A	(2)	102	N/A	0
Pacific Islander	42	N/A	75	N/A	(33)	99	N/A	-57
White	6,569	N/A	7,381	N/A	(812)	7,291	N/A	-722
INA	1,224	N/A	1,530	N/A	(306)	1,534	N/A	-310
<b>Ethnicity:</b>								
Hispanic/Latino	516	9.9%	663	11.6%	(147)	668	11.8%	-152
Non-Hispanic/Latino	3,653	70.4%	3,928	68.5%	(275)	4,123	73.0%	-470
INA	1,022	19.7%	1,142	19.9%	(120)	854	15.1%	168
<b>Age:</b>								
<22	93	1.8%	89	1.6%	4	94	1.7%	-1
22-24	162	3.1%	179	3.1%	(17)	184	3.3%	-22
25-34	933	18.0%	987	17.2%	(54)	999	17.7%	-66
35-44	1,089	21.0%	1,113	19.4%	(24)	1,111	19.7%	-22
45-54	1,236	23.8%	1,388	24.2%	(152)	1,389	24.6%	-153
55-59	699	13.5%	762	13.3%	(63)	708	12.5%	-9
60-64	481	9.3%	575	10.0%	(94)	538	9.5%	-57
>=65	490	9.4%	634	11.1%	(144)	620	11.0%	-130
<b>Total</b>	<b>5,183</b>		<b>5,727</b>		<b>(544)</b>	<b>5,643</b>		<b>-460</b>

**Gender of the Insured Unemployed**

Male	2,813	54.2%
Female	2,378	45.8%
N/A	0	0.0%
<b>Total</b>	<b>5,191</b>	<b>100%</b>

**Age of the Insured Unemployed**

<22	93	1.8%
22-24	162	3.1%
25-34	933	18.0%
35-44	1,089	21.0%
45-54	1,236	23.8%
55-59	699	13.5%
60-64	481	9.3%
>=65	490	9.4%
INA	8	INA
<b>Total</b>	<b>5,191</b>	<b>100%</b>



**Race of the Insured Unemployed**

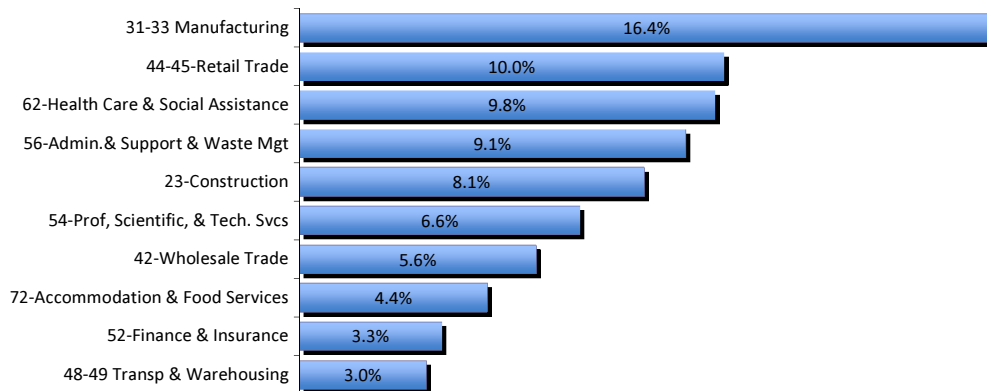
Native Am.	276	3.3%
Asian	139	1.7%
African Am.	102	1.2%
Pacific Islander	42	0.5%
White	6,569	78.7%
INA	1,224	14.7%
<b>* Total</b>	<b>8,352</b>	<b>100%</b>

**Ethnicity of the Insured Unemployed**

Hispanic/Latino	516	9.9%
Non-Hispanic/Latino	3,653	70.4%
INA	1,022	19.7%
<b>Total</b>	<b>5,191</b>	<b>100.0%</b>

\* Some Claimants choose more than one race category

**What industries did the claimants work in?**



**What occupations did the claimants hold?**

