

# Unemployment Insurance Claimant Characteristics

November 2016



Communications & Research Bureau

Industry	November 2016		October 2015		Monthly Difference	November 2015		Yearly Difference
31-33 Manufacturing	892	13%	851	16%	41	748	11%	144
23-Construction	668	10%	483	9%	185	756	11%	-88
56-Admin. & Support & Waste Mgt	661	10%	502	9%	159	720	10%	-59
44-45-Retail Trade	634	9%	551	10%	83	597	9%	37
62-Health Care & Social Assistance	584	9%	507	9%	77	520	8%	64
72-Accommodation & Food Services	384	6%	274	5%	110	418	6%	-34
54-Prof, Scientific, & Tech. Svcs	339	5%	299	6%	40	325	5%	14
11-Agriculture & Forestry	280	4%	121	2%	159	293	4%	-13
42-Wholesale Trade	258	4%	225	4%	33	327	5%	-69
48-49 Transp & Warehousing	257	4%	176	3%	81	230	3%	27
92-Public Administration	218	3%	160	3%	58	270	4%	-52
52-Finance & Insurance	186	3%	173	3%	13	177	3%	9
71-Arts, Entertainment & Recreation	168	3%	88	2%	80	186	3%	-18
61-Educational Services	141	2%	161	3%	-20	142	2%	-1
81-Other Services (ex Public Admin)	140	2%	111	2%	29	149	2%	-9
51-Information	97	1%	98	2%	-1	95	1%	2
53-Real Estate & Rental & Leasing	69	1%	66	1%	3	76	1%	-7
21-Mining	51	1%	43	1%	8	146	2%	-95
22-Utilities	19	0%	16	0%	3	26	0%	-7
55-Mgt of Companies & Enterprises	19	0%	18	0%	1	14	0%	5
INA*	611	9%	487	9%	124	660	10%	-49
<b>Total</b>	<b>6,676</b>		<b>5,410</b>		<b>1,266</b>	<b>6,875</b>		<b>-199</b>

Occupations	November 2016		October 2015		Monthly Difference	November 2015		Yearly Difference
47-Construction & Extraction	815	12%	625	12%	190	825	12%	-10
41-Sales & related	695	10%	390	7%	305	398	6%	297
51-Production	598	9%	471	9%	127	516	8%	82
43-Office & Admin Support	527	8%	867	16%	-340	802	12%	-275
45-Farming, Fishing & Forestry	445	7%	211	4%	234	437	6%	8
35-Food Prep & Related	432	6%	239	4%	193	389	6%	43
53-Transp & Mat Moving	427	6%	341	6%	86	534	8%	-107
11-Management	342	5%	398	7%	-56	419	6%	-77
49-Install, Mainte & Repair	333	5%	205	4%	128	250	4%	83
37-Bld & Grd Cleaning & Maint	299	4%	145	3%	154	301	4%	-2
13-Business Financial	251	4%	202	4%	49	204	3%	47
31-Healthcare Support	229	3%	88	2%	141	87	1%	142
15-Computer Math	198	3%	8	0%	190	16	0%	182
25-Ed Training & Library	162	2%	90	2%	72	72	1%	90
17-Architect & Engineer	148	2%	80	1%	68	78	1%	70
29-Healthcare Pract & Tech	122	2%	102	2%	20	107	2%	15
21-Community & Social Svcs	109	2%	67	1%	42	76	1%	33
39-Personal Care & Svcs	102	2%	100	2%	2	119	2%	-17
27-Art Design, Entert Spt & Media	76	1%	65	1%	11	58	1%	18
33-Protective Svcs	58	1%	56	1%	2	94	1%	-36
23-Legal	41	1%	36	1%	5	27	0%	14
19-Life Phys Social	40	1%	47	1%	-7	53	1%	-13
55-Military Specific	3	0%	3	0%	0	4	0%	-1
INA*	224	3%	574	11%	-350	1,009	15%	-785
<b>Total</b>	<b>6,676</b>		<b>5,410</b>		<b>1,266</b>	<b>6,875</b>		<b>-199</b>

\*\* This data reflects UI claims characteristics for the pay period including the 12th of the month.

# Unemployment Insurance Claimant Characteristics

November 2016



Communications & Research Bureau

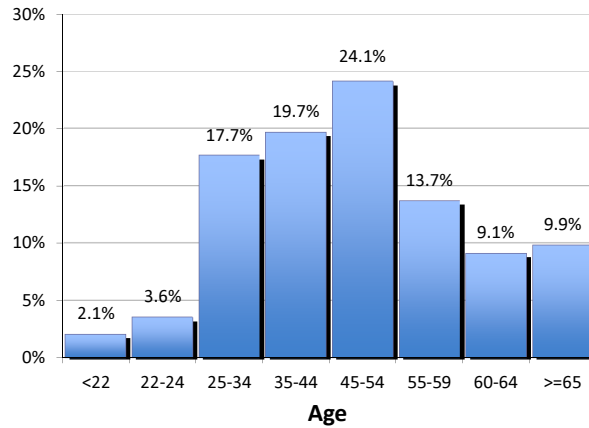
Demographics	November 2016		October 2015		Monthly Difference	November 2015		Yearly Difference
<b>Gender:</b>								
Male	3,946	59.1%	2,988	55.2%	958	4,184	60.9%	-238
Female	2,728	40.9%	2,422	44.8%	306	2,690	39.1%	38
INA	2	0.0%	0	0.0%	2	1	0.0%	1
<b>Total</b>	<b>6,676</b>		<b>5,410</b>		<b>1,266</b>	<b>6,875</b>		<b>-199</b>
<b>Race:</b> NOTE: Claimants may choose more than one Race category								
Native American	317	N/A	272	N/A	45	365	N/A	-48
Asian	155	N/A	148	N/A	7	146	N/A	9
African American	125	N/A	104	N/A	21	90	N/A	35
Pacific Islander	74	N/A	61	N/A	13	105	N/A	-31
White	6,569	N/A	7,015	N/A	(446)	8,409	N/A	-1840
INA	1,224	N/A	1,217	N/A	7	1,711	N/A	-487
<b>Ethnicity:</b>								
Hispanic/Latino	788	11.8%	505	9.3%	283	795	11.6%	-7
Non-Hispanic/Latino	4,596	68.8%	3,841	71.0%	755	4,566	66.4%	30
INA	1,292	19.4%	1,064	19.7%	228	1,514	22.0%	-222
<b>Age:</b>								
<22	140	2.1%	100	1.8%	40	137	2.0%	3
22-24	238	3.6%	161	3.0%	77	269	3.9%	-31
25-34	1,180	17.7%	974	18.0%	206	1,244	18.1%	-64
35-44	1,315	19.7%	1,110	20.5%	205	1,297	18.9%	18
45-54	1,611	24.1%	1,309	24.2%	302	1,625	23.6%	-14
55-59	917	13.7%	696	12.9%	221	853	12.4%	64
60-64	610	9.1%	508	9.4%	102	609	8.9%	1
>=65	659	9.9%	544	10.1%	115	780	11.3%	-121
<b>Total</b>	<b>6,670</b>		<b>5,402</b>		<b>1,268</b>	<b>6,814</b>		<b>-144</b>

**Gender of the Insured Unemployed**

Male	3,946	59.1%
Female	2,728	40.9%
N/A	2	0.0%
<b>Total</b>	<b>6,676</b>	<b>100%</b>

**Age of the Insured Unemployed**

<22	140	2.1%
22-24	238	3.6%
25-34	1,180	17.7%
35-44	1,315	19.7%
45-54	1,611	24.1%
55-59	917	13.7%
60-64	610	9.1%
>=65	659	9.9%
INA	6	INA
<b>Total</b>	<b>6,676</b>	<b>100%</b>



**Race of the Insured Unemployed**

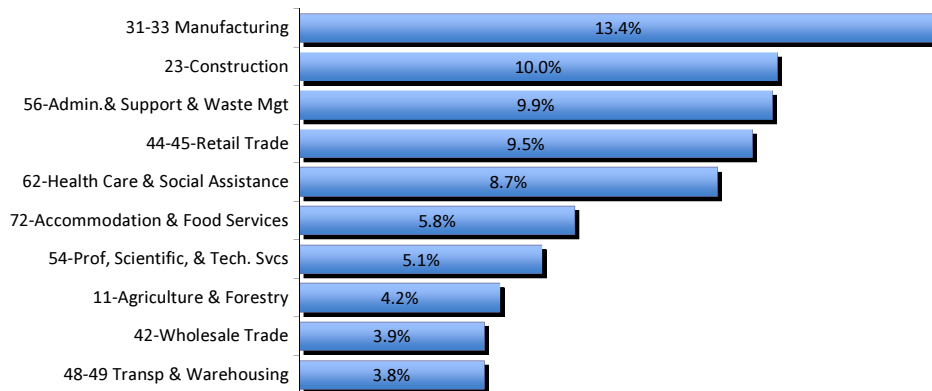
Native Am.	317	3.7%
Asian	155	1.8%
African Am.	125	1.5%
Pacific Islander	74	0.9%
White	6,569	77.6%
INA	1,224	14.5%
<b>* Total</b>	<b>8,464</b>	<b>100%</b>

**Ethnicity of the Insured Unemployed**

Hispanic/Latino	788	11.8%
Non-Hispanic/Latino	4,596	68.8%
INA	1,292	19.4%
<b>Total</b>	<b>6,676</b>	<b>100.0%</b>

\* Some Claimants choose more than one race category

**What industries did the claimants work in?**



**What occupations did the claimants hold?**

