

# Unemployment Insurance Claimant Characteristics

December 2016



Communications & Research Bureau

Industry	December 2016		November 2015		Monthly Difference	December 2015		Yearly Difference
23-Construction	2,291	21%	668	10%	1,623	2,058	18%	233
56-Admin. & Support & Waste Mgt	1,382	13%	661	10%	721	1,391	13%	-9
31-33 Manufacturing	1,101	10%	892	13%	209	1,077	10%	24
44-45-Retail Trade	862	8%	634	9%	228	838	8%	24
11-Agriculture & Forestry	739	7%	280	4%	459	833	7%	-94
62-Health Care & Social Assistance	650	6%	584	9%	66	652	6%	-2
72-Accommodation & Food Services	483	4%	384	6%	99	489	4%	-6
42-Wholesale Trade	393	4%	258	4%	135	457	4%	-64
54-Prof, Scientific, & Tech. Svcs	379	4%	339	5%	40	385	3%	-6
48-49 Transp & Warehousing	330	3%	257	4%	73	342	3%	-12
92-Public Administration	326	3%	218	3%	108	341	3%	-15
71-Arts, Entertainment & Recreation	278	3%	168	3%	110	280	3%	-2
81-Other Services (ex Public Admin)	176	2%	140	2%	36	200	2%	-24
52-Finance & Insurance	159	1%	186	3%	-27	193	2%	-34
61-Educational Services	158	1%	141	2%	17	149	1%	9
21-Mining	122	1%	51	1%	71	262	2%	-140
51-Information	108	1%	97	1%	11	100	1%	8
53-Real Estate & Rental & Leasing	101	1%	69	1%	32	154	1%	-53
22-Utilities	33	0%	19	0%	14	57	1%	-24
55-Mgt of Companies & Enterprises	16	0%	19	0%	-3	15	0%	1
INA*	691	6%	611	9%	80	854	8%	-163
<b>Total</b>	<b>10,778</b>		<b>6,676</b>		<b>4,102</b>	<b>11,127</b>		<b>-349</b>

Occupations	December 2016		November 2015		Monthly Difference	December 2015		Yearly Difference
47-Construction & Extraction	1,934	18%	815	12%	1,119	1,289	12%	645
45-Farming, Fishing & Forestry	926	9%	445	7%	481	682	6%	244
53-Transp & Mat Moving	789	7%	427	6%	362	688	6%	101
41-Sales & related	725	7%	695	10%	30	339	3%	386
37-Bld & Grd Cleaning & Maint	691	6%	299	4%	392	360	3%	331
51-Production	604	6%	598	9%	6	493	4%	111
43-Office & Admin Support	529	5%	527	8%	2	648	6%	-119
49-Install, Mainte & Repair	458	4%	333	5%	125	282	3%	176
35-Food Prep & Related	418	4%	432	6%	-14	299	3%	119
11-Management	349	3%	342	5%	7	357	3%	-8
31-Healthcare Support	236	2%	229	3%	7	58	1%	178
13-Business Financial	218	2%	251	4%	-33	158	1%	60
15-Computer Math	195	2%	198	3%	-3	11	0%	184
25-Ed Training & Library	176	2%	162	2%	14	94	1%	82
17-Architect & Engineer	148	1%	148	2%	0	80	1%	68
39-Personal Care & Svcs	112	1%	102	2%	10	98	1%	14
21-Community & Social Svcs	108	1%	109	2%	-1	59	1%	49
29-Healthcare Pract & Tech	105	1%	122	2%	-17	85	1%	20
27-Art Design, Entert Spt & Media	104	1%	76	1%	28	53	0%	51
33-Protective Svcs	60	1%	58	1%	2	82	1%	-22
23-Legal	38	0%	41	1%	-3	20	0%	18
19-Life Phys Social	37	0%	40	1%	-3	60	1%	-23
55-Military Specific	8	0%	3	0%	5	6	0%	2
INA*	1,810	17%	224	3%	1,586	4,826	43%	-3,016
<b>Total</b>	<b>10,778</b>		<b>6,676</b>		<b>4,102</b>	<b>11,127</b>		<b>-349</b>

\*\* This data reflects UI claims characteristics for the pay period including the 12th of the month.

# Unemployment Insurance Claimant Characteristics

December 2016



Communications & Research Bureau

Demographics	December 2016		November 2015		Monthly Difference	December 2015		Yearly Difference
<b>Gender:</b>								
Male	7,612	70.6%	3,946	59.1%	3,666	7,861	70.6%	-249
Female	3,165	29.4%	2,728	40.9%	437	3,264	29.3%	-99
INA	1	0.0%	2	0.0%	(1)	2	0.0%	-1
<b>Total</b>	<b>10,778</b>		<b>6,676</b>		<b>4,102</b>	<b>11,127</b>		<b>-349</b>
<b>Race:</b> NOTE: Claimants may choose more than one Race category								
Native American	540	N/A	317	N/A	223	304	N/A	236
Asian	177	N/A	155	N/A	22	118	N/A	59
African American	172	N/A	125	N/A	47	118	N/A	54
Pacific Islander	106	N/A	74	N/A	32	79	N/A	27
White	14,566	N/A	6,569	N/A	7,997	11,288	N/A	3278
INA	3,824	N/A	1,224	N/A	2,600	2,133	N/A	1691
<b>Ethnicity:</b>								
Hispanic/Latino	1,696	15.7%	788	11.8%	908	1,802	16.2%	-106
Non-Hispanic/Latino	7,070	65.6%	4,596	68.8%	2,474	6,931	62.3%	139
INA	2,012	18.7%	1,292	19.4%	720	2,394	21.5%	-382
<b>Age:</b>								
<22	317	2.9%	140	2.1%	177	309	2.8%	8
22-24	485	4.5%	238	3.6%	247	480	4.3%	5
25-34	2,215	20.6%	1,180	17.7%	1,035	2,185	19.6%	30
35-44	2,150	19.9%	1,315	19.7%	835	2,173	19.5%	-23
45-54	2,489	23.1%	1,611	24.1%	878	2,548	22.9%	-59
55-59	1,336	12.4%	917	13.7%	419	1,339	12.0%	-3
60-64	865	8.0%	610	9.1%	255	879	7.9%	-14
>=65	909	8.4%	659	9.9%	250	1,087	9.8%	-178
<b>Total</b>	<b>10,766</b>		<b>6,670</b>		<b>4,096</b>	<b>11,000</b>		<b>-234</b>

**Unemployment Insurance  
Claimant Characteristics  
December 2016**



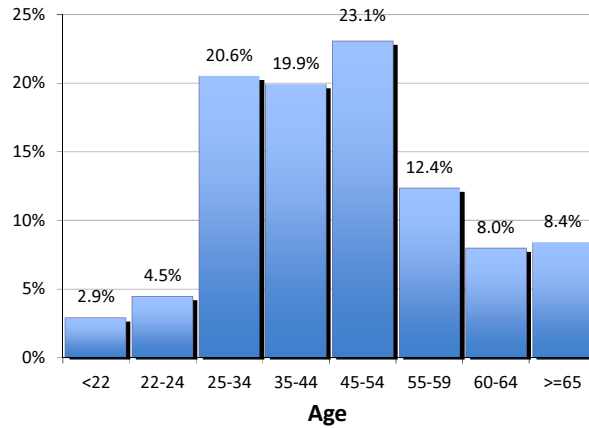
Communications & Research Bureau

**Gender of the Insured Unemployed**

Male	7,612	70.6%
Female	3,165	29.4%
N/A	1	0.0%
<b>Total</b>	<b>10,778</b>	<b>100%</b>

**Age of the Insured Unemployed**

<22	317	2.9%
22-24	485	4.5%
25-34	2,215	20.6%
35-44	2,150	19.9%
45-54	2,489	23.1%
55-59	1,336	12.4%
60-64	865	8.0%
>=65	909	8.4%
INA	12	INA
<b>Total</b>	<b>10,778</b>	<b>100%</b>



**Race of the Insured Unemployed**

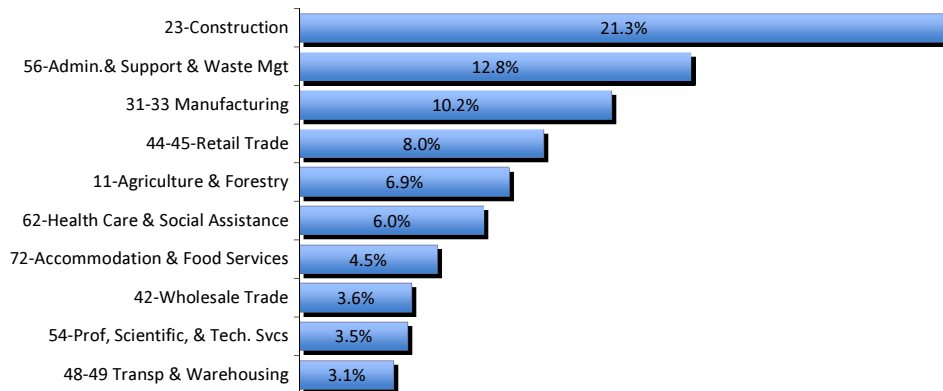
Native Am.	540	2.8%
Asian	177	0.9%
African Am.	172	0.9%
Pacific Islander	106	0.5%
White	14,566	75.1%
INA	3,824	19.7%
<b>* Total</b>	<b>19,385</b>	<b>100%</b>

**Ethnicity of the Insured Unemployed**

Hispanic/Latino	1,696	15.7%
Non-Hispanic/Latino	7,070	65.6%
INA	2,012	18.7%
<b>Total</b>	<b>10,778</b>	<b>100.0%</b>

\* Some Claimants choose more than one race category

**What industries did the claimants work in?**



**What occupations did the claimants hold?**

