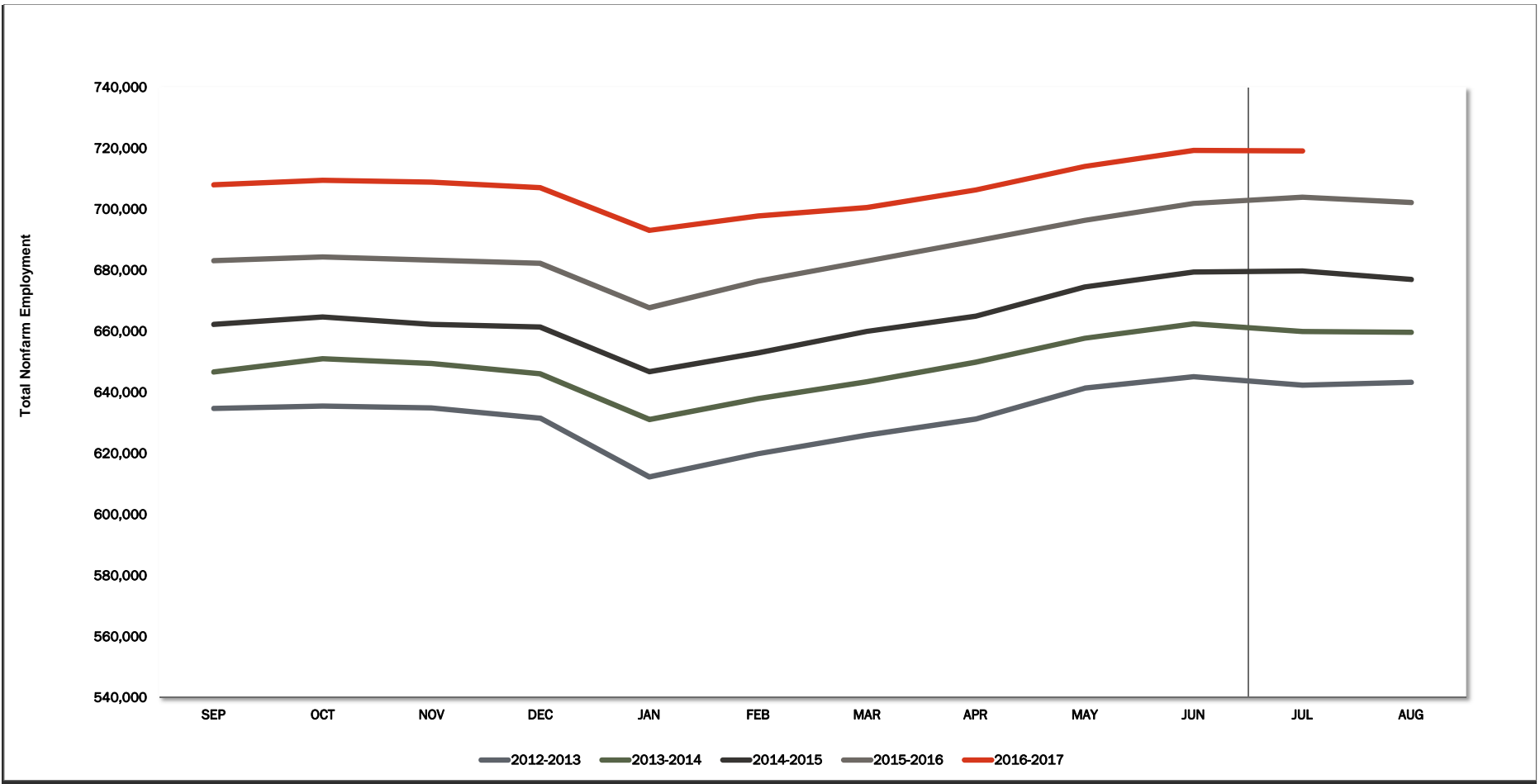
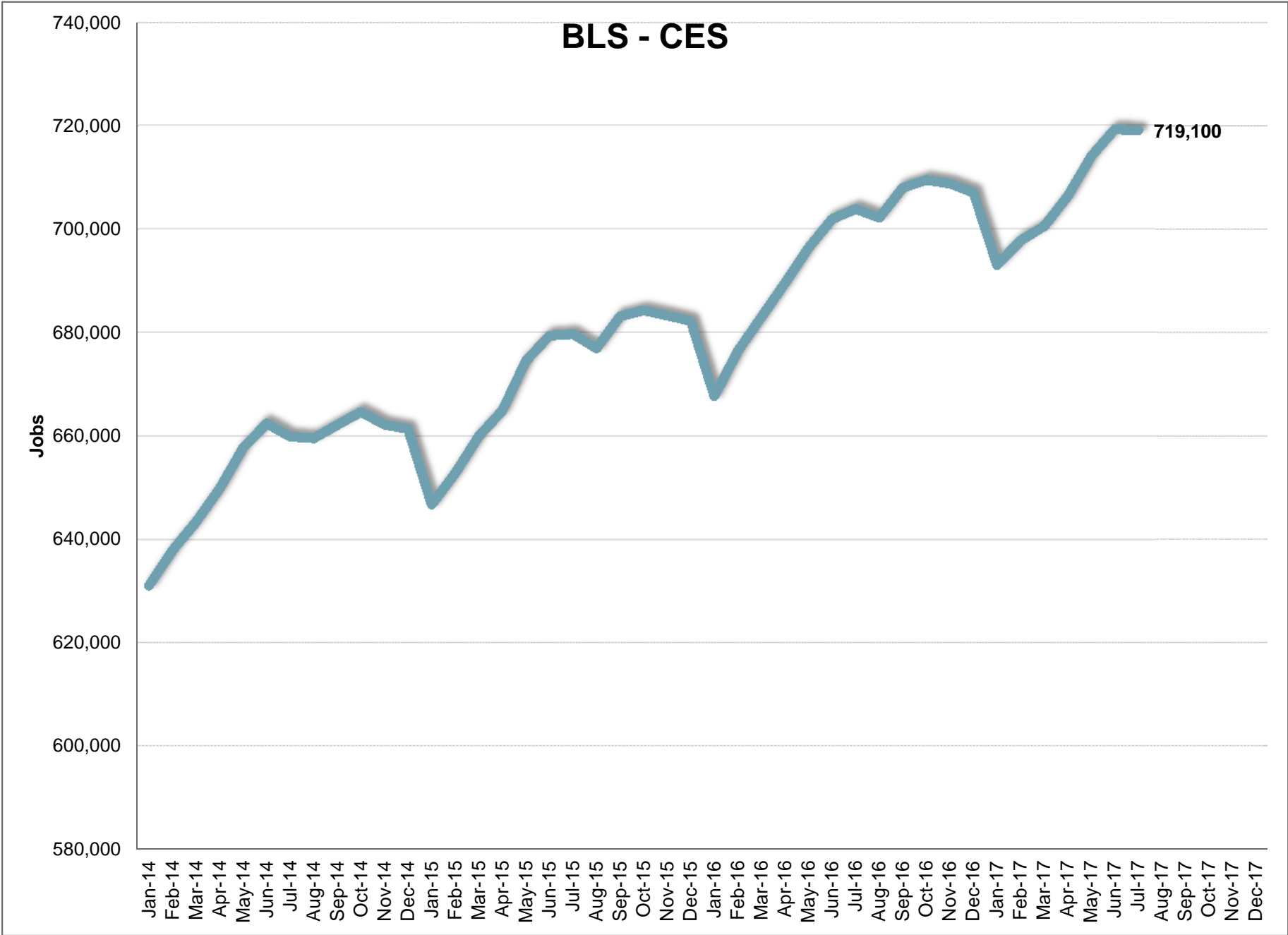


BLS CES



	JAN	FEB	MAR	APR	MAY	JUN	JUL	AUG	SEP	OCT	NOV	DEC	12 Mth Avg
2011	585,986	592,294	595,033	605,616	612,454	616,146	616,782	618,468	624,344	622,127	621,168	618,956	610,800
2012	596,825	602,857	608,120	613,644	624,266	628,583	626,574	628,865	634,701	635,520	634,941	631,498	622,200
2013	612,341	619,885	625,951	631,298	641,372	645,139	642,332	643,270	646,672	650,979	649,416	646,096	637,900
2014	631,146	637,973	643,507	649,881	657,769	662,503	659,967	659,655	662,240	664,700	662,267	661,424	654,400
2015	646,813	652,881	660,037	664,987	674,533	679,463	679,763	676,985	683,190	684,351	683,321	682,268	672,400
2016	667,800	676,500	683,100	689,600	696,400	702,000	703,900	702,200	708,000	709,500	708,800	707,100	696,200
2017	693,100	697,800	700,600	706,400	714,100	719,300	719,100						
Mnth-Mnth % Change													
2016	-2.1%	1.3%	1.0%	1.0%	1.0%	0.8%	0.3%	-0.2%	0.8%	0.2%	-0.1%	-0.3%	
2017	-2.0%	0.7%	0.4%	0.8%	1.1%	0.7%	0.0%						
5-MTM Avg	-2.7%	1.1%	1.0%	0.9%	1.4%	0.7%	-0.2%						
Year-Year % Change													
2016	3.2%	3.6%	3.5%	3.7%	3.2%	3.3%	3.6%	3.7%	3.6%	3.7%	3.7%	3.6%	3.5%
2017	3.8%	3.2%	2.6%	2.4%	2.5%	2.5%	2.2%						
5-YTY Avg	2.6%	2.7%	2.8%	2.6%	2.6%	2.6%	2.7%						

* = Average is based on the previous five years of experience.



July 2017

Current Employment Statistics

Confidence Interval Bounds of Selected Month's Estimate

Industry Title	Current Month	Estimated Change			Confidence Interval Bounds of Selected Month's Estimate					
		1 Month	3 Month	12 Month	1 Month		3 Month		12 Month	
		+	-	+	-	+	-	+	-	
Total Nonfarm	719,100	-200	12,700	15,163	3,074	-3,474	18,138	7,262	25,563	4,763
Total Private	600,400	6,400	20,300	11,790	9,568	3,232	25,562	15,038	21,849	1,731
Goods Producing	117,600	1,800	6,100	3,520	3,205	395	8,426	3,774	7,907	-867
Private Service Providing	482,800	4,600	14,200	8,270	7,439	1,761	18,920	9,480	17,322	-782
Mining and Logging	4,000	100	900	-161	296	-96	1,227	573	497	-819
Construction	46,600	800	4,200	1,980	1,947	-347	6,070	2,330	5,553	-1,593
Manufacturing	67,000	900	1,000	1,701	1,688	112	2,344	-344	4,160	-758
Durable Goods	39,000	300	300	1,007	925	-325	1,361	-761	3,045	-1,031
Nondurable Goods	28,000	600	700	694	1,080	120	1,524	-124	2,069	-681
Trade, Transportation, and Utilities	141,300	2,000	3,600	2,760	3,364	636	5,885	1,315	7,664	-2,144
Wholesale Trade	29,900	300	-100	864	831	-231	787	-987	2,586	-858
Retail Trade	87,500	1,600	3,600	1,031	2,714	486	5,457	1,743	4,729	-2,667
Transportation and Warehousing	23,900	100	100	865	679	-479	1,094	-894	3,586	-1,856
Information	9,500	200	200	426	508	-108	721	-321	1,479	-627
Financial Activities	34,900	300	-100	250	830	-230	815	-1,015	2,005	-1,505
Professional and Business Services	88,100	-600	2,600	-381	729	-1,929	4,757	443	3,926	-4,688
Education and Health Services	104,400	-100	-500	3,850	941	-1,141	1,132	-2,132	6,466	1,234
Educational Services	12,100	-500	-500	1,026	115	-1,115	526	-1,526	2,321	-269
Health Care and Social Assistance	92,300	400	0	2,824	1,241	-441	1,268	-1,268	5,096	552
Leisure and Hospitality	79,400	2,500	8,000	1,444	4,064	936	10,716	5,284	6,377	-3,489
Arts, Entertainment, and Recreation	12,400	800	3,500	-139	1,803	-203	5,352	1,648	3,097	-3,375
Accommodation and Food Services	67,000	1,700	4,500	1,583	2,899	501	6,487	2,513	5,307	-2,141
Other Services	25,200	300	400	-79	1,029	-429	1,519	-719	1,918	-2,076

For information on Bureau of Labor Statistic confidence interval calculations, please visit:

www.bls.gov/sae/790stderr.htm

BLS CES

July		2017								
NAICS	Category	JUL	JUN	JUL-2016	Change	%	Avg*	Yr-to-Yr Change	%	Avg*
00-000000	Total Nonfarm	719,100	719,300	703,900	-200	0.0%	-0.2%	15,200	2.2%	2.7%
05-000000	Total Private	600,400	594,000	588,600	6,400	1.1%	1.0%	11,800	2.0%	3.1%
06-000000	Goods Producing	117,600	115,800	114,100	1,800	1.6%	1.2%	3,500	3.1%	4.3%
07-000000	Service Providing. (Inc. Gov)	601,500	603,500	589,900	-2,000	-0.3%	-0.4%	11,600	2.0%	2.4%
08-000000	Private Service Providing	482,800	478,200	474,500	4,600	1.0%	1.0%	8,300	1.7%	2.8%
10-000000	Natural Resources	4,000	3,900	4,200	100	2.6%	3.6%	-200	-4.8%	-0.7%
20-000000	Construction	46,600	45,800	44,600	800	1.7%	2.3%	2,000	4.5%	6.2%
20-236000	Construction of Buildings	11,400	11,200	10,300	200	1.8%	1.7%	1,100	10.7%	6.0%
20-236100	Residential Building Const.	6,400	6,300	5,700	100	1.6%	1.8%	700	12.3%	6.3%
20-237000	Heavy And Civil Const.	4,900	4,600	5,000	300	6.5%	4.1%	-100	-2.0%	-1.3%
20-238000	Specialty Trade Contractors	30,300	30,000	29,400	300	1.0%	2.1%	900	3.1%	7.9%
20-238100	Foundtn, Strctre, Blding Contract	7,200	7,100	7,100	100	1.4%	2.2%	100	1.4%	9.3%
20-238200	Building Equipment Contractors	11,700	11,700	10,700	0	0.0%	1.2%	1,000	9.3%	6.2%
20-238300	Building Finishing Contractors	5,800	5,800	5,900	0	0.0%	3.3%	-100	-1.7%	12.0%
20-238900	Other Specialty Trade Contractors	5,600	5,400	5,600	200	3.7%	2.7%	0	0.0%	6.0%
30-000000	Manufacturing	67,000	66,100	65,300	900	1.4%	0.4%	1,700	2.6%	3.5%
31-000000	Durable Goods	39,000	38,700	38,000	300	0.8%	0.5%	1,000	2.6%	3.5%
31-334000	Computer And Elect. Manufact.	11,800	11,600	12,400	200	1.7%	0.3%	-600	-4.8%	1.9%
31-334100	Computer And Periph. Manufact.	2,200	2,100	2,200	100	4.8%	0.3%	0	0.0%	-4.6%
31-334400	Semiconductor & Othr Elect. Manuf.	8,900	8,900	9,300	0	0.0%	0.2%	-400	-4.3%	2.8%
32-000000	Nondurable Goods	28,000	27,400	27,300	600	2.2%	0.1%	700	2.6%	3.5%
32-311000	Food Manufacturing	17,500	17,300	17,600	200	1.2%	-0.2%	-100	-0.6%	3.4%
32-311400	Fruit & Vegetable Manufacturing	7,200	7,100	7,300	100	1.4%	0.5%	-100	-1.4%	0.2%
40-000000	Trade, Transportation, & Utilities	141,300	139,300	138,500	2,000	1.4%	1.0%	2,800	2.0%	2.4%
41-000000	Wholesale Trade	29,900	29,600	29,000	300	1.0%	2.0%	900	3.1%	2.3%
41-423000	Merchant Whlsalers Dur. Gds	15,000	14,800	14,400	200	1.4%	0.5%	600	4.2%	4.1%
41-424000	Merchant Whlsalers Nondur. Gds	12,300	12,000	11,800	300	2.5%	4.1%	500	4.2%	0.8%
42-000000	Retail Trade	87,500	85,900	86,500	1,600	1.9%	0.8%	1,000	1.2%	2.6%
42-441000	Motor Vehicle And Parts Dealers	13,900	13,700	13,400	200	1.5%	1.3%	500	3.7%	4.3%
42-444000	Blding Materials & Garden Supplies	8,900	8,900	8,600	0	0.0%	-1.8%	300	3.5%	4.6%
42-445000	Food And Beverage Stores	14,100	14,100	13,900	0	0.0%	1.9%	200	1.4%	3.2%
42-445100	Grocery Stores	12,600	12,500	12,300	100	0.8%	2.2%	300	2.4%	4.0%
42-452000	General Merchandise Stores	18,600	18,400	18,200	200	1.1%	0.6%	400	2.2%	2.1%
42-452100	Department Stores	5,100	5,000	5,100	100	2.0%	0.2%	0	0.0%	-0.1%
42-452900	Other General Merchandise Stores	13,500	13,400	13,100	100	0.7%	0.8%	400	3.1%	3.0%
43-000000	Transport., Wrhouse, And Utilities	23,900	23,800	23,000	100	0.4%	0.2%	900	3.9%	2.0%
43-220000	Utilities	3,100	3,100	3,000	0	0.0%	0.9%	100	3.3%	1.3%
43-400089	Transportation And Warehousing	20,800	20,700	20,000	100	0.5%	0.1%	800	4.0%	2.1%
43-484000	Truck Transportation	10,500	10,400	10,000	100	1.0%	0.4%	500	5.0%	1.9%
43-484100	General Freight Trucking	7,000	6,900	6,600	100	1.4%	-0.1%	400	6.1%	1.4%
50-000000	Information	9,500	9,300	9,100	200	2.2%	0.0%	400	4.4%	-1.2%
50-517000	Telecommunications	3,000	3,000	3,000	0	0.0%	-0.9%	0	0.0%	-1.8%
55-000000	Financial Activities	34,900	34,600	34,700	300	0.9%	1.3%	200	0.6%	2.7%
55-520000	Finance And Insurance	26,400	26,400	26,100	0	0.0%	0.4%	300	1.1%	2.8%
55-522000	Credit Intermediation Activities	11,800	11,800	11,800	0	0.0%	0.4%	0	0.0%	1.5%
55-524000	Insurance Carriers Activities	12,400	12,400	12,200	0	0.0%	0.3%	200	1.6%	4.3%
55-530000	Real Estate And Rental And Leasing	8,500	8,200	8,500	300	3.7%	4.1%	0	0.0%	2.2%
60-000000	Professional And Business Services	88,100	88,700	88,500	-600	-0.7%	0.6%	-400	-0.5%	2.5%
60-540000	Prof., Scientific, Technical Services	36,100	36,100	35,300	0	0.0%	0.4%	800	2.3%	3.1%
60-541300	Architectural, Engineering, Services	6,300	6,300	6,200	0	0.0%	1.4%	100	1.6%	2.9%
60-541700	Scientific Research & Development	6,600	6,500	6,200	100	1.5%	-0.1%	400	6.5%	-0.2%
60-550000	Mgmnt. Of Companies & Enterprises	5,400	5,400	5,400	0	0.0%	0.1%	0	0.0%	-0.5%
60-560000	Admin., Support, Waste Mgmnt Serv.	46,600	47,200	47,700	-600	-1.3%	0.8%	-1,100	-2.3%	2.6%
60-561000	Administrative, Support Services	43,200	43,900	44,300	-700	-1.6%	0.8%	-1,100	-2.5%	3.3%
60-561300	Employment Services	14,600	15,400	16,000	-800	-5.2%	0.0%	-1,400	-8.8%	5.9%
60-561400	Business Support Services	11,500	11,300	11,700	200	1.8%	0.2%	-200	-1.7%	-0.7%
60-561420	Telephone Call Centers	8,600	8,700	9,100	-100	-1.1%	0.2%	-500	-5.5%	-1.9%
60-561700	Services To Buildings And Dwellings	12,000	11,900	11,600	100	0.8%	1.5%	400	3.4%	5.5%

* = Average is based on the previous five years of experience.

BLS CES

July		2017								
NAICS	Category	JUL	JUN	JUL-2016	Change	%	Avg*	Yr-to-Yr Change	%	Avg*
65-000000	Education And Health Services	104,400	104,500	100,600	-100	-0.1%	-0.2%	3,800	3.8%	3.2%
65-610000	Educational Services	12,100	12,600	11,100	-500	-4.0%	-4.1%	1,000	9.0%	3.4%
65-620000	Health Care And Social Services	92,300	91,900	89,500	400	0.4%	0.4%	2,800	3.1%	3.2%
65-621000	Ambulatory Health Care	36,000	35,800	34,900	200	0.6%	0.7%	1,100	3.2%	3.6%
65-622000	Hospitals	26,200	26,200	25,200	0	0.0%	0.2%	1,000	4.0%	4.1%
65-622100	General Medical And Surgical	24,700	24,600	23,600	100	0.4%	0.3%	1,100	4.7%	4.3%
65-623000	Nursing & Residential Care Facilities	14,800	14,800	14,500	0	0.0%	0.0%	300	2.1%	1.6%
65-624000	Social Assistance	15,300	15,100	14,900	200	1.3%	0.3%	400	2.7%	3.1%
70-000000	Leisure And Hospitality	79,400	76,900	78,000	2,500	3.3%	2.6%	1,400	1.8%	3.9%
70-710000	Arts, Entertainment, Recreation	12,400	11,600	12,500	800	6.9%	6.6%	-100	-0.8%	3.8%
70-713000	Amusement Gambling, Recreation	10,400	9,700	10,600	700	7.2%	5.8%	-200	-1.9%	3.9%
70-713900	Other Amusement & Recreation Ind.	8,300	7,800	8,900	500	6.4%	5.7%	-600	-6.7%	4.4%
70-720000	Accommodation And Food Services	67,000	65,300	65,400	1,700	2.6%	1.8%	1,600	2.4%	4.0%
70-721000	Accommodations	10,900	10,100	10,600	800	7.9%	6.4%	300	2.8%	2.0%
70-722000	Food Service And Drinking Places	56,100	55,200	54,800	900	1.6%	0.9%	1,300	2.4%	4.4%
70-722511	Full Service Restaurants	24,100	23,900	25,400	200	0.8%	1.0%	-1,300	-5.1%	3.5%
70-722590	Limited Service Restaurants	26,400	26,300	25,600	100	0.4%	0.4%	800	3.1%	5.8%
80-000000	Other Services	25,200	24,900	25,300	300	1.2%	2.1%	-100	-0.4%	2.8%
80-811000	Repair And Maintenance	7,700	7,600	7,700	100	1.3%	1.5%	0	0.0%	5.1%
80-811100	Automotive Repair & Maintenance	5,500	5,400	5,300	100	1.9%	1.1%	200	3.8%	3.8%
90-000000	Total Government	118,700	125,300	115,300	-6,600	-5.3%	-5.5%	3,400	2.9%	0.7%
90-910000	Federal Government	14,700	14,500	14,000	200	1.4%	1.1%	700	5.0%	0.1%
90-940000	State And Local Government	104,000	110,800	101,300	-6,800	-6.1%	-6.4%	2,700	2.7%	0.8%
90-920000	State Government	27,900	28,200	27,700	-300	-1.1%	-0.1%	200	0.7%	0.8%
90-921611	State Education	12,400	12,700	12,200	-300	-2.4%	-2.1%	200	1.6%	1.3%
90-929999	State Administration	15,500	15,500	15,600	0	0.0%	1.6%	-100	-0.6%	0.3%
90-930000	Local Government	76,100	82,600	73,600	-6,500	-7.9%	-8.6%	2,500	3.4%	0.9%
90-931611	Local Education	37,600	43,600	35,500	-6,000	-13.8%	-16.9%	2,100	5.9%	1.2%
90-939999	Local Administration	38,500	39,000	38,100	-500	-1.3%	0.4%	400	1.0%	0.6%

* = Average is based on the previous five years of experience.

BLS CES

PRELIMINARY AND FINAL ESTIMATE COMPARISON

June - 2017

NAICS	Category	Final	Preliminary	Change	%
00-000000	TOTAL NONFARM	719,300	719,700	(400)	-0.1%
05-000000	TOTAL PRIVATE	594,000	594,500	(500)	-0.1%
06-000000	GOODS PRODUCING	115,800	115,500	300	0.3%
07-000000	SERVICE PROVIDING. (INC. GOV)	603,500	604,200	(700)	-0.1%
08-000000	PRIVATE SERVICE PROVIDING	478,200	479,000	(800)	-0.2%
10-000000	NATURAL RESOURCES	3,900	3,900	0	0.0%
20-000000	CONSTRUCTION	45,800	45,800	-	0.0%
20-236000	CONSTRUCTION OF BUILDING	11,200	11,100	100	0.9%
20-236100	RESIDENTIAL BUILDING CONST.	6,300	6,200	100	1.6%
20-237000	HEAVY AND CIVIL CONST.	4,600	4,600	0	0.0%
20-238000	SPECIALTY TRADE CONTRACTORS	30,000	30,100	(100)	-0.3%
20-238100	FOUNDTN, STRCTRE, BLDING CONTRACT	7,100	7,100	0	0.0%
20-238200	BUILDING EQUIPMENT CONTRACTORS	11,700	11,800	(100)	-0.8%
20-238300	BUILDING FINISHING CONTRACTORS	5,800	5,800	0	0.0%
20-238900	OTHER SPECIALTY TRADE CONTRACTORS	5,400	5,400	0	0.0%
30-000000	MANUFACTURING	66,100	65,800	300	0.5%
31-000000	DURABLE GOODS	38,700	38,400	300	0.8%
31-334000	COMPUTER AND ELECT. MANUFACT.	11,600	11,600	0	0.0%
31-334100	COMPUTER AND PERIPH. MANUFACT.	2,100	2,100	0	0.0%
31-334400	SEMICONDUCTER & OTHR ELECT. MANUF.	8,900	8,900	0	0.0%
32-000000	NONDURABLE GOODS	27,400	27,400	0	0.0%
32-311000	FOOD MANUFACTURING	17,300	17,800	(500)	-2.8%
32-311400	FRUIT & VEGETABLE MANUFACTURING	7,100	7,300	(200)	-2.7%
40-000000	TRADE, TRANSPORTATION, & UTILITIES	139,300	139,600	(300)	-0.2%
41-000000	WHOLESALE TRADE	29,600	29,700	(100)	-0.3%
41-423000	MERCHANT WHLSALERS DUR. GDS	14,800	14,800	0	0.0%
41-424000	MERCHANT WHLSALERS NONDUR. GDS	12,000	12,000	0	0.0%
42-000000	RETAIL TRADE	85,900	86,000	(100)	-0.1%
42-441000	MOTOR VEHICLE AND PARTS DEALERS	13,700	13,700	0	0.0%
42-444000	BLDING MATERIALS & GARDEN SUPPLIES	8,900	8,900	0	0.0%
42-445000	FOOD AND BEVERAGE STORES	14,100	14,100	0	0.0%
42-445100	GROCERY STORES	12,500	12,500	0	0.0%
42-452000	GENERAL MERCHANDISE STORES	18,400	18,400	0	0.0%
42-452100	DEPARTMENT STORES	5,000	5,000	0	0.0%
42-452900	OTHER GENERAL MERCHANDISE STORES	13,400	13,400	0	0.0%
43-000000	TRANSPORT., WRHOUSE, AND UTILITIES	23,800	23,900	(100)	-0.4%
43-220000	UTILITIES	3,100	3,100	0	0.0%
43-400089	TRANSPORTATION AND WAREHOUSING	20,700	20,800	(100)	-0.5%
43-484000	TRUCK TRANSPORTATION	10,400	10,400	0	0.0%
43-484100	GENERAL FREIGHT TRUCKING	6,900	6,900	0	0.0%
50-000000	INFORMATION	9,300	9,200	100	1.1%
50-517000	TELECOMMUNICATIONS	3,000	3,000	0	0.0%
55-000000	FINANCIAL ACTIVITIES	34,600	34,500	100	0.3%
55-520000	FINANCE AND INSURANCE	26,400	26,300	100	0.4%
55-522000	CREDIT INTERMEDIATION ACTIVITIES	11,800	11,700	100	0.9%
55-524000	INSURANCE CARRIERS ACTIVITIES	12,400	12,400	0	0.0%
55-530000	REAL ESTATE AND RENTAL AND LEASING	8,200	8,200	0	0.0%

BLS CES

PRELIMINARY AND FINAL ESTIMATE COMPARISON

June - 2017

NAICS	Category	Final	Preliminary	Change	%
60-000000	PROFESSIONAL AND BUSINESS SERVICES	88,700	88,800	(100)	-0.1%
60-540000	PROF., SCIENTIFIC, TECHNICAL SERVICES	36,100	36,300	(200)	-0.6%
60-541300	ARCHITECTURAL, ENGINEERING, SERVICES	6,300	6,300	0	0.0%
60-541700	SCIENTIFIC RESEARCH & DEVELOPMENT	6,500	6,500	0	0.0%
60-550000	MGMNT. OF COMPANIES & ENTERPRISES	5,400	5,400	0	0.0%
60-560000	ADMIN., SUPPORT, WASTE MGMNT SERV.	47,200	47,100	100	0.2%
60-561000	ADMINISTRATIVE, SUPPORT SERVICES	43,900	43,700	200	0.5%
60-561300	EMPLOYMENT SERVICES	15,400	15,400	0	0.0%
60-561400	BUSINESS SUPPORT SERVICES	11,300	11,300	0	0.0%
60-561420	TELEPHONE CALL CENTERS	8,700	8,700	0	0.0%
60-561700	SERVICES TO BUILDINGS AND DWELLINGS	11,900	11,900	0	0.0%
65-000000	EDUCATION AND HEALTH SERVICES	104,500	104,700	(200)	-0.2%
65-610000	EDUCATIONAL SERVICES	12,600	12,400	200	1.6%
65-620000	HEALTH CARE AND SOCIAL SERVICES	91,900	92,300	(400)	-0.4%
65-621000	AMBULATORY HEALTH CARE	35,800	35,900	(100)	-0.3%
65-622000	HOSPITALS	26,200	26,200	0	0.0%
65-622100	GENERAL MEDICAL AND SURGICAL	24,600	24,700	(100)	-0.4%
65-623000	NURSING & RESIDENTIAL CARE FACILITIES	14,800	14,900	(100)	-0.7%
65-624000	SOCIAL ASSISTANCE	15,100	15,300	(200)	-1.3%
70-000000	LEISURE AND HOSPITALITY	76,900	77,300	(400)	-0.5%
70-710000	ARTS, ENTERTAINMENT, RECREATION	11,600	11,800	(200)	-1.7%
70-713000	AMUSEMENT GAMBLING, RECREATION	9,700	9,800	(100)	-1.0%
70-713900	OTHER AMUSEMENT & RECREATION IND.	7,800	7,900	(100)	-1.3%
70-720000	ACCOMMODATION AND FOOD SERVICES	65,300	65,500	(200)	-0.3%
70-721000	ACCOMMODATIONS	10,100	10,200	(100)	-1.0%
70-722000	FOOD SERVICE AND DRINKING PLACES	55,200	55,300	(100)	-0.2%
70-722511	FULL SERVICE RESTAURANTS	23,900	23,900	0	0.0%
70-722590	LIMITED SERVICE RESTAURANTS	26,300	26,300	0	0.0%
80-000000	OTHER SERVICES	24,900	24,900	0	0.0%
80-811000	REPAIR AND MAINTENANCE	7,600	7,600	0	0.0%
80-811100	AUTOMOTIVE REPAIR & MAINTENANCE	5,400	5,400	0	0.0%
90-000000	TOTAL GOVERNMENT	125,300	125,200	100	0.1%
90-910000	FEDERAL GOVERNMENT	14,500	14,500	0	0.0%
90-940000	STATE AND LOCAL GOVERNMENT	110,800	110,700	100	0.1%
90-920000	STATE GOVERNMENT	28,200	28,200	0	0.0%
90-921611	STATE EDUCATION	12,700	12,700	0	0.0%
90-929999	STATE ADMINISTRATION	15,500	15,500	0	0.0%
90-930000	LOCAL GOVERNMENT	82,600	82,500	100	0.1%
90-931611	LOCAL EDUCATION	43,600	43,300	300	0.7%
90-939999	LOCAL ADMINISTRATION	39,000	39,200	(200)	-0.5%