

IDAHO DEPARTMENT OF LABOR
UNEMPLOYMENT INSURANCE PROGRAM EXCLUDING UCFE AND UCX
WEEKS PAID REGULAR UI ONLY

	2008	2009	2010	2011	2012	2013	2014	2015	2016	2017	2016 to 2017 Yearly Change	
											Amount	Percent
1ST QTR	267,878	507,037	437,976	344,218	284,822	231,348	180,160	148,989	142,883	144,392		
2ND QTR	175,066	428,332	293,521	226,565	175,699	129,752	104,883	84,477	70,849	65,795		
3RD QTR	137,892	293,073	209,470	165,316	125,699	96,267	81,190	62,862	54,766			
4TH QTR	232,402	295,627	250,224	187,851	144,756	104,110	90,054	70,963	78,135			
ANNUAL	813,238	1,524,069	1,191,191	923,950	730,976	561,477	456,287	367,291	346,633			

2017 Weekly Data with last 3 weeks of 2016 for comparison

	2008	2009	2010	2011	2012	2013	2014	2015	2016	2017	Change From Last Year		Change From Last Week	
											Amount	Percent	Amount	Percent
50	25,037	26,979	21,815	18,104	14,500	10,330	9,222	7,163	6,650					
51	26,286	28,876	22,461	18,992	14,924	11,446	9,806	8,324	7,405					
52	28,242	28,929	22,581	19,629	15,049	11,017	9,653	8,462	9,099					
1	18,662	33,758	32,265	28,183	22,016	18,018	13,627	11,471	9,159	10,528	1,369	14.9%	1,429	15.7%
2	20,298	38,007	36,210	25,865	21,340	19,246	15,227	13,571	11,028	11,787	759	6.9%	1,259	13.7%
3	18,388	34,296	32,588	26,145	21,372	17,562	13,584	11,784	10,577	11,160	583	5.5%	-627	-5.7%
4	19,766	35,785	33,282	27,221	22,837	18,565	13,566	11,802	10,481	12,177	1,696	16.2%	1,017	9.6%
5	21,349	38,173	34,903	27,781	23,571	19,470	14,354	12,359	11,749	12,491	742	6.3%	314	3.0%
6	22,014	39,097	35,203	27,635	23,273	19,248	14,753	12,579	11,691	12,434	743	6.4%	-57	-0.5%
7	22,378	39,918	35,150	27,325	22,925	18,976	15,139	12,833	11,648	12,386	738	6.3%	-48	-0.4%
8	21,978	40,857	34,393	27,118	22,494	18,493	14,433	12,140	10,994	11,739	745	6.8%	-647	-5.6%
9	21,910	41,734	35,009	26,811	22,528	17,949	14,456	11,587	10,979	11,550	571	5.2%	-189	-1.7%
10	21,546	41,832	34,235	25,847	21,908	17,260	14,070	10,928	10,273	10,815	542	5.3%	-735	-6.7%
11	20,455	41,449	32,964	25,707	20,808	16,819	13,218	10,021	9,464	9,942	478	5.1%	-873	-8.5%
12	19,983	41,355	31,667	24,769	20,225	15,121	12,449	9,155	8,624	9,081	457	5.3%	-861	-9.1%
13	19,151	40,776	30,107	23,811	19,525	14,621	11,284	8,759	8,127	8,302	175	2.2%	-779	-9.0%
14	18,502	40,612	28,728	22,627	18,747	13,873	11,056	8,771	8,089	7,824	-265	-3.3%	-478	-5.9%
15	17,009	39,172	28,191	20,761	16,856	12,740	9,934	8,035	7,279	6,858	-421	-5.8%	-966	-11.9%
16	15,769	37,636	26,521	19,695	15,619	11,725	8,881	7,503	6,657	6,596	-61	-0.9%	-262	-3.6%
17	15,294	36,883	24,954	19,475	14,967	11,484	8,519	7,153	6,202	6,116	-86	-1.4%	-480	-7.2%
18	14,540	35,180	23,877	18,359	14,427	10,810	8,621	6,725	5,689	5,784	95	1.7%	-332	-5.4%
19	13,653	34,474	23,058	17,337	13,682	10,122	7,908	6,400	5,496	5,271	-225	-4.1%	-513	-9.0%
20	12,870	32,911	21,861	16,538	12,615	9,186	7,626	6,135	5,147	4,971	-176	-3.4%	-300	-5.5%
21	12,018	31,126	20,399	15,901	12,203	8,792	7,675	5,995	4,941	4,724	-217	-4.4%	-247	-4.8%
22	11,602	29,617	19,874	15,867	11,804	8,491	7,044	5,716	4,872	4,323	-549	-11.3%	-401	-8.1%
23	11,481	29,156	19,350	15,471	11,439	8,441	7,110	5,763	4,814	4,503	-311	-6.5%	180	3.7%
24	10,927	27,298	19,764	15,074	11,277	7,985	6,790	5,425	4,822	4,431	-391	-8.1%	-72	-1.5%
25	10,865	27,451	18,805	14,821	11,043	7,044	6,835	5,389	4,930	4,394	-536	-10.9%	-37	-0.8%

YTD REGULAR WEEKS PAID	432,408	908,553	713,358	556,144	449,501	353,041	278,159	227,999	203,732	210,187	6,455	2.8%
-------------------------------	----------------	----------------	----------------	----------------	----------------	----------------	----------------	----------------	----------------	----------------	--------------	-------------

This week, 37 fewer people received regular UI benefits than last week, bringing the weekly total to 4,394. Compared to last year, 536 fewer people obtained regular UI compensation, which is 10.9 percent less than the twenty-fifth week of 2016.

The number of weeks compensated does not equate to the number of people receiving benefits. This is because it is possible for an individual to receive multiple weeks of compensation under certain circumstances. The total number of people who have received benefits this week for all regular programs, including UI, UCFE and UCX claimants, is 4,171.

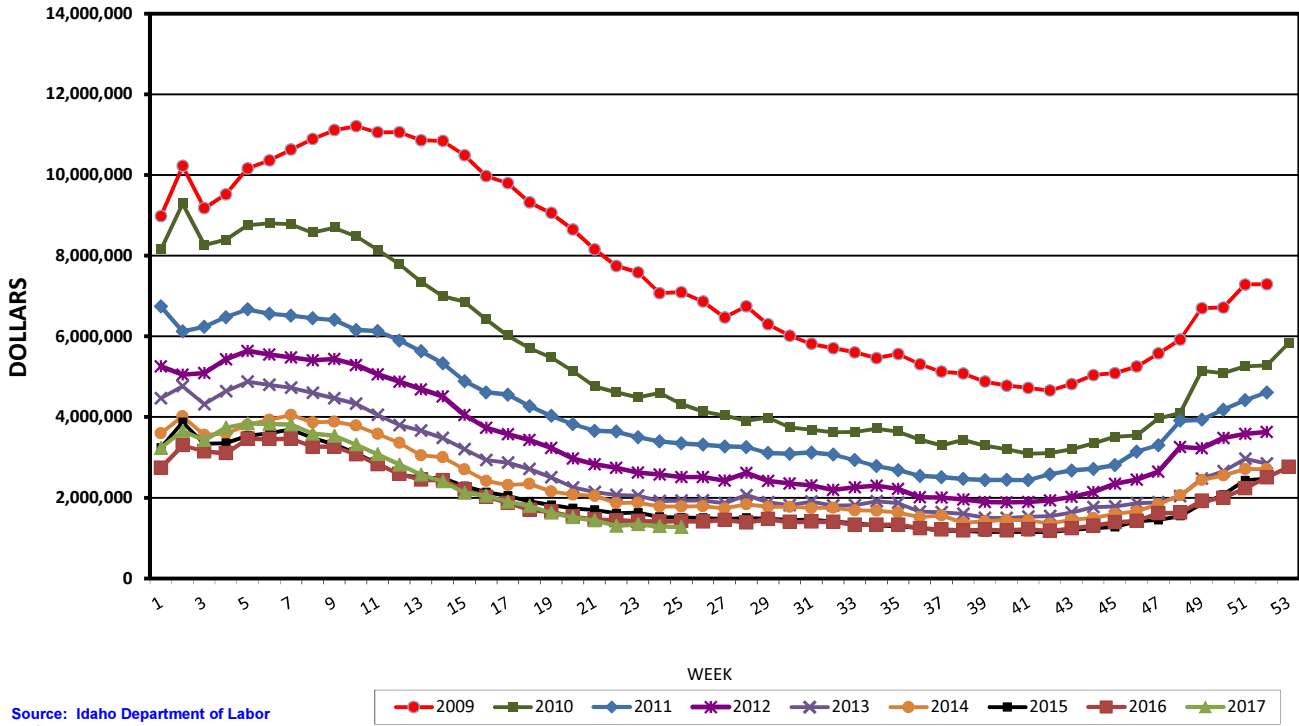
Source: Idaho Department of Labor
 Research and Communications Department

IDAHO DEPARTMENT OF LABOR
UNEMPLOYMENT INSURANCE PROGRAM EXCLUDING UCFE AND UCX
BENEFITS PAID REGULAR UI ONLY

	2008	2009	2010	2011	2012	2013	2014	2015	2016	2017	2016 to 2017 Yearly Change			
											Amount	Percent		
1ST QTR	\$69,366,522	\$135,274,097	\$109,475,664	\$82,010,563	\$68,260,509	\$57,482,252	\$48,100,649	\$42,456,184	\$42,542,422	\$44,444,592				
2ND QTR	\$45,552,327	\$112,650,185	\$69,526,153	\$52,389,613	\$41,305,578	\$31,992,206	\$28,172,817	\$23,897,836	\$20,966,806	\$20,054,228				
3RD QTR	\$34,609,590	\$74,071,706	\$47,422,809	\$37,274,052	\$28,953,112	\$23,330,644	\$21,501,277	\$17,489,548	\$15,868,560					
4TH QTR	\$60,349,667	\$73,856,244	\$57,671,147	\$43,162,596	\$34,496,394	\$26,477,056	\$24,783,187	\$20,414,689	\$23,582,092					
ANNUAL	\$209,878,105	\$395,852,232	\$284,095,773	\$214,836,823	\$173,015,593	\$139,282,157	\$122,557,930	\$104,258,257	\$102,959,880					
2017 Weekly Data with 3 prior weeks for comparison	2008	2009	2010	2011	2012	2013	2014	2015	2016	2017	Change From Last Year		Change From Last Week	
											Amount	Percent	Amount	Percent
50	6,511,733	6,716,808	5,086,492	4,181,876	3,480,945	2,653,362	2,551,641	2,072,445	1,994,045					
51	6,891,776	7,287,923	5,252,379	4,417,009	3,583,530	2,963,109	2,714,036	2,432,333	2,232,782					
52	7,496,602	7,292,744	5,281,587	4,613,378	3,629,753	2,848,274	2,710,272	2,475,502	2,759,002					
1	4,799,190	8,984,317	8,153,214	6,744,193	5,254,934	4,463,553	3,599,090	3,241,306	2,735,757	3,230,195	494,438	18.1%	471,193	17.1%
2	5,156,748	10,224,017	9,289,026	6,127,647	5,047,371	4,766,395	4,020,513	3,873,423	3,299,899	3,657,200	357,301	10.8%	427,005	15.6%
3	4,713,947	9,176,653	8,260,371	6,236,766	5,087,242	4,316,584	3,557,667	3,339,523	3,142,593	3,426,202	283,609	9.0%	-230,998	-7.0%
4	5,052,685	9,525,223	8,398,203	6,478,128	5,431,582	4,636,382	3,590,455	3,354,672	3,102,589	3,739,342	636,753	20.5%	313,140	10.0%
5	5,514,049	10,165,560	8,757,640	6,670,014	5,641,056	4,875,604	3,807,385	3,537,649	3,462,671	3,841,829	379,158	10.9%	102,487	3.3%
6	5,699,249	10,365,720	8,797,702	6,562,157	5,551,392	4,795,784	3,929,842	3,599,454	3,451,218	3,830,461	379,243	11.0%	-11,368	-0.3%
7	5,796,595	10,633,362	8,781,185	6,513,813	5,479,496	4,724,715	4,052,424	3,691,871	3,461,630	3,812,679	351,049	10.1%	-17,782	-0.5%
8	5,714,208	10,897,353	8,574,077	6,450,844	5,409,979	4,600,257	3,871,772	3,490,781	3,265,169	3,588,961	323,792	9.9%	-223,718	-6.5%
9	5,733,853	11,112,994	8,693,127	6,408,675	5,442,532	4,462,561	3,882,205	3,317,173	3,264,028	3,533,192	269,164	8.2%	-55,769	-1.7%
10	5,639,773	11,209,224	8,481,653	6,160,150	5,292,139	4,331,825	3,786,712	3,105,691	3,071,783	3,314,220	242,437	7.9%	-218,972	-6.7%
11	5,325,796	11,056,901	8,145,294	6,130,333	5,055,221	4,053,263	3,585,245	2,842,261	2,824,771	3,077,939	253,168	9.0%	-236,281	-7.7%
12	5,224,878	11,058,045	7,786,944	4,877,457	5,895,570	3,793,825	3,363,315	2,574,466	2,588,250	2,818,764	230,514	8.9%	-259,175	-9.2%
13	4,995,549	10,864,729	7,357,229	5,632,274	4,690,109	3,661,504	3,054,024	2,487,914	2,441,759	2,573,608	131,849	5.4%	-245,156	-9.5%
14	4,822,616	10,842,802	6,991,076	5,331,784	4,513,385	3,483,334	3,005,131	2,488,773	2,430,305	2,403,796	-26,509	-1.1%	-169,812	-7.0%
15	4,464,640	10,492,605	6,856,668	4,889,088	4,047,563	3,204,309	2,704,566	2,285,282	2,198,930	2,121,338	-77,592	-3.5%	-282,458	-11.6%
16	4,137,971	9,972,520	6,423,406	4,614,026	3,731,096	2,935,812	2,416,379	2,138,104	2,020,412	2,049,956	29,544	1.5%	-71,382	-3.2%
17	3,996,228	9,797,880	6,019,211	4,558,909	3,577,826	2,872,596	2,314,217	2,046,245	1,867,649	1,897,583	29,934	1.6%	-152,373	-7.5%
18	3,822,947	9,323,084	5,707,055	4,272,653	3,432,374	2,710,916	2,345,430	1,909,368	1,699,014	1,795,573	96,559	5.7%	-102,010	-5.5%
19	3,576,942	9,058,169	5,474,471	4,029,555	3,235,460	2,501,269	2,153,398	1,819,922	1,649,056	1,624,101	-24,955	-1.5%	-171,472	-10.1%
20	3,364,613	8,645,039	5,138,916	3,823,219	2,975,922	2,254,548	2,078,246	1,737,774	1,530,427	1,515,757	-14,670	-1.0%	-108,344	-6.6%
21	3,128,847	8,159,038	4,759,256	3,661,666	2,827,154	2,140,918	2,048,287	1,698,049	1,460,328	1,437,137	-23,191	-1.6%	-78,620	-5.1%
22	2,999,791	7,744,071	4,611,127	3,641,839	2,741,406	2,066,330	1,869,899	1,614,416	1,439,930	1,304,813	-135,117	-9.4%	-132,324	-9.1%
23	2,958,656	7,588,407	4,488,662	3,501,905	2,625,489	2,048,561	1,876,919	1,629,280	1,418,155	1,339,220	-78,935	-5.6%	34,407	2.4%
24	2,823,328	7,069,423	4,595,146	3,400,984	2,575,839	1,916,985	1,783,645	1,524,054	1,409,637	1,293,749	-115,888	-8.2%	-45,471	-3.2%
25	2,780,433	7,094,329	4,322,711	3,347,498	2,513,505	1,922,478	1,783,392	1,508,940	1,419,956	1,271,205	-148,751	-10.5%	-22,544	-1.6%
YTD REGULAR BENEFITS	109,463,102	233,967,134	174,863,368	127,736,191	104,544,023	85,617,833	72,696,764	63,347,451	60,655,916	63,227,615	2,571,699	4.2%		

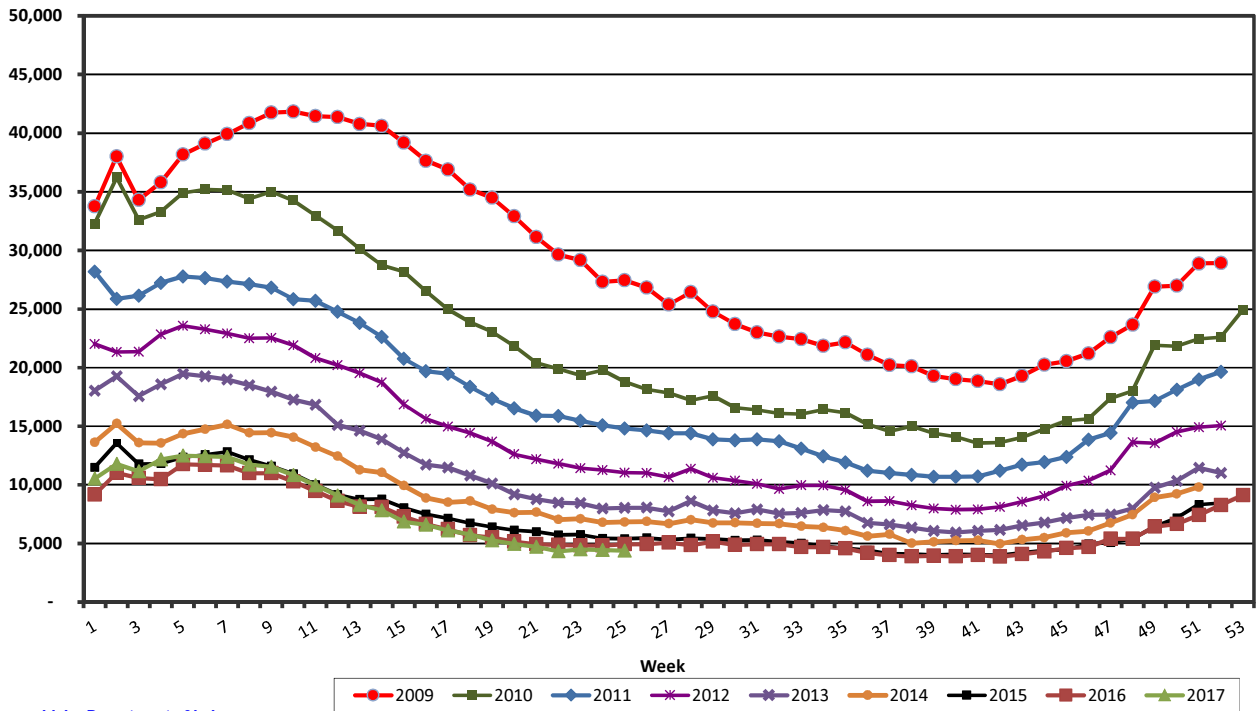
This week, \$22,544 less was expended for regular UI activity than last week, bringing the total to \$1.3 million. Compared to the twenty-fifth week of 2016, \$148,751 less was spent for regular UI compensation, an 10.5 percent decrease. The average weekly benefit payment for regular UI this week is \$289.30. A decrease from last week of \$2.67.

Benefits Paid for Week Ending 6/24/2017 Regular Only



Source: Idaho Department of Labor
Communications and Research Division

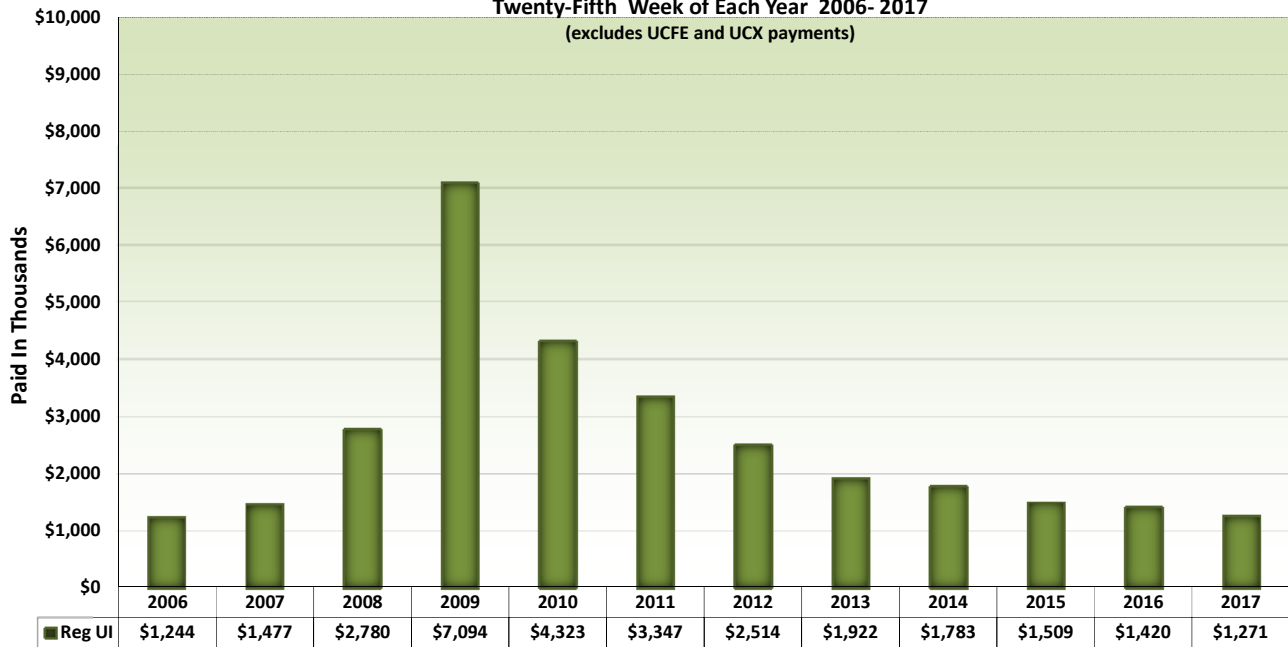
Weeks Compensated for Week Ending 6/24/2017 Regular Only



Source: Idaho Department of Labor
Communication and Research Division

Total Benefits Paid

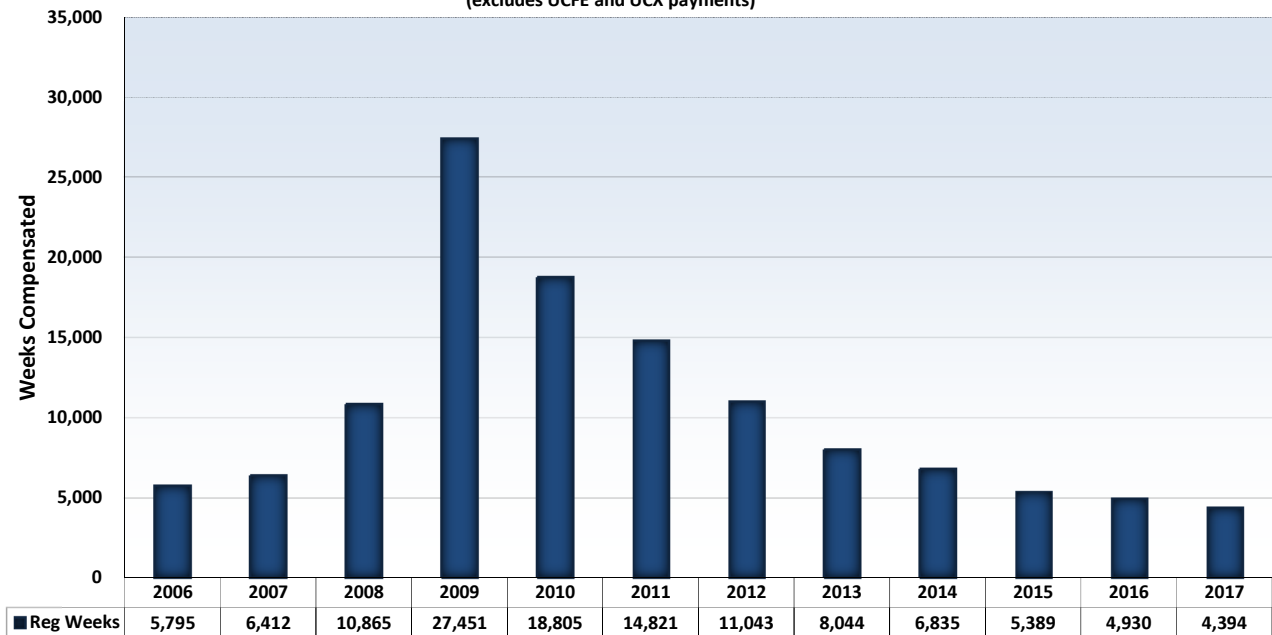
Twenty-Fifth Week of Each Year 2006 - 2017
(excludes UCFE and UCX payments)



Regular UI Benefits Excludes UCFE and UCX payments

Total Weeks Compensated

Twenty-Fifth Week of Each Year 2006 - 2017
(excludes UCFE and UCX payments)



Regular UI Benefits Excludes UCFE and UCX weeks compensated