

# Unemployment Insurance Claimant Characteristics

January 2017



Communications & Research Bureau

Industry	January 2017		December 2016		Monthly Difference	January 2016		Yearly Difference
23-Construction	3,839	26%	2,291	21%	1,548	2,914	21%	925
56-Admin. & Support & Waste Mgt	1,791	12%	1,382	13%	409	1,807	13%	-16
31-33 Manufacturing	1,434	10%	1,101	10%	333	1,309	10%	125
44-45-Retail Trade	1,136	8%	862	8%	274	1,074	8%	62
11-Agriculture & Forestry	1,023	7%	739	7%	284	960	7%	63
62-Health Care & Social Assistance	719	5%	650	6%	69	727	5%	-8
48-49 Transp & Warehousing	597	4%	330	3%	267	380	3%	217
72-Accommodation & Food Services	596	4%	483	4%	113	572	4%	24
42-Wholesale Trade	516	4%	393	4%	123	539	4%	-23
54-Prof, Scientific, & Tech. Svcs	476	3%	379	4%	97	449	3%	27
92-Public Administration	388	3%	326	3%	62	408	3%	-20
71-Arts, Entertainment & Recreation	330	2%	278	3%	52	319	2%	11
52-Finance & Insurance	226	2%	159	1%	67	199	1%	27
81-Other Services (ex Public Admin)	223	2%	176	2%	47	223	2%	0
21-Mining	167	1%	122	1%	45	286	2%	-119
61-Educational Services	166	1%	158	1%	8	156	1%	10
51-Information	123	1%	108	1%	15	112	1%	11
53-Real Estate & Rental & Leasing	117	1%	101	1%	16	148	1%	-31
22-Utilities	73	1%	33	0%	40	69	1%	4
55-Mgt of Companies & Enterprises	15	0%	16	0%	-1	16	0%	-1
INA*	562	4%	691	6%	-129	915	7%	-353
<b>Total</b>	<b>14,517</b>		<b>10,778</b>		<b>3,739</b>	<b>13,582</b>		<b>935</b>

Occupations	January 2017		December 2016		Monthly Difference	January 2016		Yearly Difference
47-Construction & Extraction	3,414	24%	1,934	18%	1,480	1,049	8%	2,365
53-Transp & Mat Moving	1,295	9%	789	7%	506	509	4%	786
45-Farming, Fishing & Forestry	1,196	8%	926	9%	270	378	3%	818
37-Bld & Grd Cleaning & Maint	888	6%	691	6%	197	232	2%	656
41-Sales & related	820	6%	725	7%	95	278	2%	542
51-Production	754	5%	604	6%	150	394	3%	360
43-Office & Admin Support	609	4%	529	5%	80	490	4%	119
49-Install, Mainte & Repair	604	4%	458	4%	146	204	2%	400
35-Food Prep & Related	515	4%	418	4%	97	214	2%	301
11-Management	360	2%	349	3%	11	286	2%	74
13-Business Financial	269	2%	218	2%	51	123	1%	146
31-Healthcare Support	256	2%	236	2%	20	46	0%	210
15-Computer Math	193	1%	195	2%	-2	10	0%	183
17-Architect & Engineer	191	1%	148	1%	43	59	0%	132
25-Ed Training & Library	174	1%	176	2%	-2	70	1%	104
29-Healthcare Pract & Tech	115	1%	105	1%	10	70	1%	45
21-Community & Social Svcs	113	1%	108	1%	5	44	0%	69
39-Personal Care & Svcs	111	1%	112	1%	-1	65	0%	46
27-Art Design, Entert Spt & Media	99	1%	104	1%	-5	42	0%	57
33-Protective Svcs	75	1%	60	1%	15	61	0%	14
19-Life Phys Social	39	0%	37	0%	2	44	0%	-5
23-Legal	38	0%	38	0%	0	11	0%	27
55-Military Specific	10	0%	8	0%	2	5	0%	5
INA*	2,379	16%	1,810	17%	569	8,898	66%	-6,519
<b>Total</b>	<b>14,517</b>		<b>10,778</b>		<b>3,739</b>	<b>13,582</b>		<b>935</b>

\*\* This data reflects UI claims characteristics for the pay period including the 12th of the month.

# Unemployment Insurance Claimant Characteristics

January 2017



Communications & Research Bureau

Demographics	January 2017		December 2016		Monthly Difference	January 2016		Yearly Difference
<b>Gender:</b>								
Male	10,768	74.2%	7,612	70.6%	3,156	9,947	73.2%	821
Female	3,748	25.8%	3,165	29.4%	583	3,633	26.7%	115
INA	1	0.0%	1	0.0%	-	2	0.0%	-1
<b>Total</b>	<b>14,517</b>		<b>10,778</b>		<b>3,739</b>	<b>13,582</b>		<b>935</b>
<b>Race:</b> NOTE: Claimants may choose more than one Race category								
Native American	816	N/A	540	N/A	276	741	N/A	75
Asian	220	N/A	177	N/A	43	171	N/A	49
African American	246	N/A	172	N/A	74	170	N/A	76
Pacific Islander	133	N/A	106	N/A	27	137	N/A	-4
White	20,798	N/A	14,566	N/A	6,232	19,044	N/A	1754
INA	5,596	N/A	3,824	N/A	1,772	4,925	N/A	671
<b>Ethnicity:</b>								
Hispanic/Latino	2,406	16.6%	1,696	15.7%	710	2,227	16.4%	179
Non-Hispanic/Latino	9,787	67.4%	7,070	65.6%	2,717	8,421	62.0%	1366
INA	2,324	16.0%	2,012	18.7%	312	2,934	21.6%	-610
<b>Age:</b>								
<22	502	3.5%	317	2.9%	185	425	3.1%	77
22-24	725	5.0%	485	4.5%	240	641	4.7%	84
25-34	3,063	21.1%	2,215	20.6%	848	2,830	20.8%	233
35-44	3,009	20.7%	2,150	19.9%	859	2,666	19.6%	343
45-54	3,217	22.2%	2,489	23.1%	728	3,033	22.3%	184
55-59	1,766	12.2%	1,336	12.4%	430	1,587	11.7%	179
60-64	1,114	7.7%	865	8.0%	249	1,024	7.5%	90
>=65	1,110	7.6%	909	8.4%	201	1,289	9.5%	-179
<b>Total</b>	<b>14,506</b>		<b>10,766</b>		<b>3,740</b>	<b>13,495</b>		<b>1011</b>

**Unemployment Insurance  
Claimant Characteristics  
January 2017**



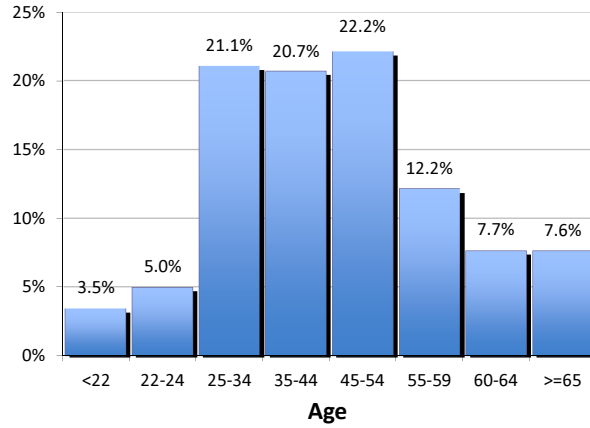
Communications & Research Bureau

**Gender of the Insured Unemployed**

Male	10,768	74.2%
Female	3,748	25.8%
N/A	1	0.0%
<b>Total</b>	<b>14,517</b>	<b>100%</b>

**Age of the Insured Unemployed**

<22	502	3.5%
22-24	725	5.0%
25-34	3,063	21.1%
35-44	3,009	20.7%
45-54	3,217	22.2%
55-59	1,766	12.2%
60-64	1,114	7.7%
>=65	1,110	7.6%
INA	11	INA
<b>Total</b>	<b>14,517</b>	<b>100%</b>



**Race of the Insured Unemployed**

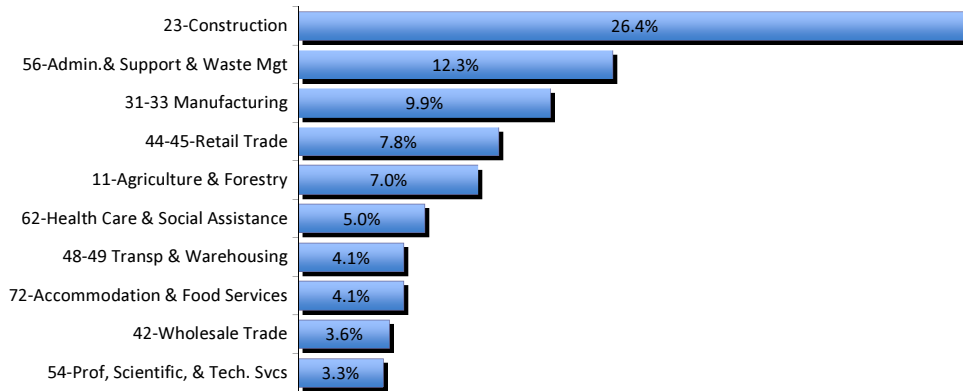
Native Am.	816	2.9%
Asian	220	0.8%
African Am.	246	0.9%
Pacific Islander	133	0.5%
White	20,798	74.8%
INA	5,596	20.1%
<b>* Total</b>	<b>27,809</b>	<b>100%</b>

**Ethnicity of the Insured Unemployed**

Hispanic/Latino	2,406	16.6%
Non-Hispanic/Latino	9,787	67.4%
INA	2,324	16.0%
<b>Total</b>	<b>14,517</b>	<b>100.0%</b>

\* Some Claimants choose more than one race category

**What industries did the claimants work in?**



**What occupations did the claimants hold?**

