

# Unemployment Insurance Claimant Characteristics

March 2017



Communications & Research Bureau

Industry	March 2017		February 2017		Monthly Difference	March 2016		Yearly Difference
23-Construction	1,987	19%	3,303	26%	-1,316	1,763	19%	224
56-Admin. & Support & Waste Mgt	1,152	11%	1,768	14%	-616	1,098	12%	54
31-33 Manufacturing	1,127	11%	1,310	10%	-183	1,010	11%	117
11-Agriculture & Forestry	1,064	10%	1,137	9%	-73	970	10%	94
44-45-Retail Trade	860	8%	1,120	9%	-260	814	9%	46
62-Health Care & Social Assistance	601	6%	651	5%	-50	628	7%	-27
72-Accommodation & Food Services	465	5%	547	4%	-82	418	4%	47
54-Prof, Scientific, & Tech. Svcs	448	4%	505	4%	-57	374	4%	74
48-49 Transp & Warehousing	447	4%	391	3%	56	455	5%	-8
42-Wholesale Trade	347	3%	481	4%	-134	396	4%	-49
92-Public Administration	235	2%	345	3%	-110	324	3%	-89
52-Finance & Insurance	208	2%	214	2%	-6	183	2%	25
71-Arts, Entertainment & Recreation	208	2%	296	2%	-88	199	2%	9
81-Other Services (ex Public Admin)	186	2%	233	2%	-47	192	2%	-6
61-Educational Services	131	1%	155	1%	-24	116	1%	15
51-Information	118	1%	127	1%	-9	98	1%	20
21-Mining	115	1%	116	1%	-1	106	1%	9
53-Real Estate & Rental & Leasing	95	1%	107	1%	-12	114	1%	-19
22-Utilities	56	1%	70	1%	-14	33	0%	23
55-Mgt of Companies & Enterprises	24	0%	15	0%	9	14	0%	10
INA*	361	4%	7	0%	354	1	0%	360
<b>Total</b>	<b>10,235</b>		<b>12,898</b>		<b>-2,663</b>	<b>9,306</b>		<b>929</b>

Occupations	March 2017		February 2017		Monthly Difference	March 2016		Yearly Difference
47-Construction & Extraction	2,175	21%	3,309	26%	-1,134	1,818	20%	357
45-Farming, Fishing & Forestry	1,355	13%	1,492	12%	-137	1,202	13%	153
41-Sales & related	857	8%	935	7%	-78	713	8%	144
53-Transp & Mat Moving	828	8%	1,110	9%	-282	863	9%	-35
51-Production	782	8%	787	6%	-5	594	6%	188
43-Office & Admin Support	644	6%	652	5%	-8	660	7%	-16
37-Bld & Grd Cleaning & Maint	597	6%	1,038	8%	-441	568	6%	29
35-Food Prep & Related	508	5%	577	4%	-69	452	5%	56
49-Install, Mainte & Repair	452	4%	612	5%	-160	426	5%	26
11-Management	313	3%	319	2%	-6	366	4%	-53
31-Healthcare Support	251	2%	253	2%	-2	208	2%	43
13-Business Financial	226	2%	242	2%	-16	207	2%	19
15-Computer Math	205	2%	197	2%	8	133	1%	72
17-Architect & Engineer	146	1%	172	1%	-26	85	1%	61
29-Healthcare Pract & Tech	138	1%	111	1%	27	119	1%	19
39-Personal Care & Svcs	137	1%	142	1%	-5	118	1%	19
25-Ed Training & Library	102	1%	137	1%	-35	97	1%	5
27-Art Design, Entert Spt & Media	96	1%	103	1%	-7	84	1%	12
21-Community & Social Svcs	95	1%	88	1%	7	86	1%	9
33-Protective Svcs	76	1%	85	1%	-9	75	1%	1
23-Legal	40	0%	38	0%	2	28	0%	12
19-Life Phys Social	31	0%	32	0%	-1	36	0%	-5
55-Military Specific	7	0%	7	0%	0	11	0%	-4
INA*	174	2%	460	4%	-286	357	4%	-183
<b>Total</b>	<b>10,235</b>		<b>12,898</b>		<b>-2,663</b>	<b>9,306</b>		<b>929</b>

\*\* This data reflects UI claims characteristics for the pay period including the 12th of the month.

# Unemployment Insurance Claimant Characteristics

March 2017



Communications & Research Bureau

Demographics	March 2017		February 2017		Monthly Difference	March 2016		Yearly Difference
<b>Gender:</b>								
Male	7,152	69.9%	9,512	73.7%	(2,360)	6,370	68.5%	782
Female	3,082	30.1%	3,386	26.3%	(304)	2,936	31.5%	146
INA	1	0.0%	0	0.0%	1	0	0.0%	1
<b>Total</b>	<b>10,235</b>		<b>12,898</b>		<b>(2,663)</b>	<b>9,306</b>		<b>929</b>
<b>Race:</b> NOTE: Claimants may choose more than one Race category								
Native American	574	N/A	772	N/A	(198)	349	N/A	225
Asian	154	N/A	179	N/A	(25)	79	N/A	75
African American	193	N/A	216	N/A	(23)	100	N/A	93
Pacific Islander	103	N/A	100	N/A	3	53	N/A	50
White	11,372	N/A	19,173	N/A	(7,801)	11,372	N/A	0
INA	5,278	N/A	5,278	N/A	-	2,109	N/A	3169
<b>Ethnicity:</b>								
Hispanic/Latino	1,259	12.3%	2,211	17.1%	(952)	1,251	13.4%	8
Non-Hispanic/Latino	7,228	70.6%	8,731	67.7%	(1,503)	6,405	68.8%	823
INA	1,748	17.1%	1,956	15.2%	(208)	1,650	17.7%	98
<b>Age:</b>								
<22	274	2.7%	443	3.4%	(169)	274	2.9%	0
22-24	468	4.6%	679	5.3%	(211)	429	4.6%	39
25-34	2,069	20.2%	2,842	22.0%	(773)	1,992	21.4%	77
35-44	2,120	20.7%	2,885	22.4%	(765)	1,941	20.9%	179
45-54	2,340	22.9%	2,867	22.2%	(527)	2,188	23.5%	152
55-59	1,339	13.1%	1,585	12.3%	(246)	1,141	12.3%	198
60-64	872	8.5%	963	7.5%	(91)	810	8.7%	62
>=65	750	7.3%	633	4.9%	117	500	5.4%	250
<b>Total</b>	<b>10,232</b>		<b>12,897</b>		<b>(2,665)</b>	<b>9,275</b>		<b>957</b>

**Unemployment Insurance  
Claimant Characteristics  
March 2017**



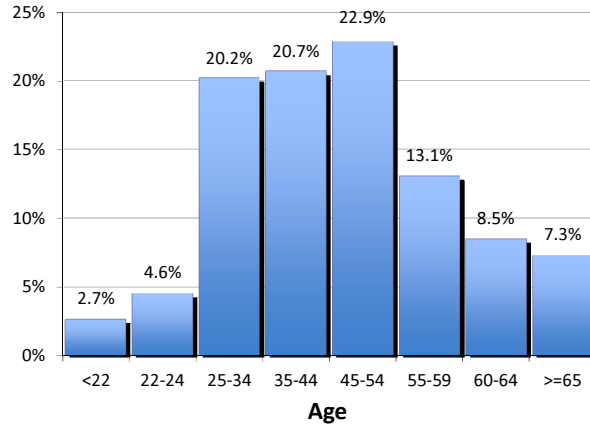
Communications & Research Bureau

**Gender of the Insured Unemployed**

Male	7,152	69.9%
Female	3,082	30.1%
N/A	1	0.0%
<b>Total</b>	<b>10,235</b>	<b>100%</b>

**Age of the Insured Unemployed**

<22	274	2.7%
22-24	468	4.6%
25-34	2,069	20.2%
35-44	2,120	20.7%
45-54	2,340	22.9%
55-59	1,339	13.1%
60-64	872	8.5%
>=65	750	7.3%
INA	3	INA
<b>Total</b>	<b>10,235</b>	<b>100%</b>



**Race of the Insured Unemployed**

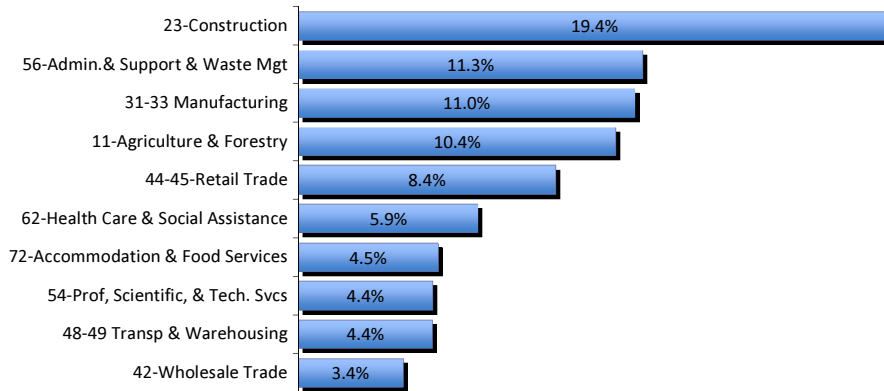
Native Am.	574	3.2%
Asian	154	0.9%
African Am.	193	1.1%
Pacific Islander	103	0.6%
White	11,372	64.3%
INA	5,278	29.9%
<b>* Total</b>	<b>17,674</b>	<b>100%</b>

**Ethnicity of the Insured Unemployed**

Hispanic/Latino	1,259	12.3%
Non-Hispanic/Latino	7,228	70.6%
INA	1,748	17.1%
<b>Total</b>	<b>10,235</b>	<b>100.0%</b>

\* Some Claimants choose more than one race category

**What industries did the claimants work in?**



**What occupations did the claimants hold?**

