

Unemployment Insurance Claimant Characteristics

April 2017



Communications & Research Bureau

Industry	April 2017		March 2017		Monthly Difference	April 2016		Yearly Difference
23-Construction	1,058	14%	1,987	19%	-929	968	13%	90
31-33 Manufacturing	948	13%	1,127	11%	-179	848	11%	100
11-Agriculture & Forestry	779	10%	1,064	10%	-285	589	8%	190
56-Admin. & Support & Waste Mgt	716	9%	1,152	11%	-436	663	9%	53
44-45-Retail Trade	710	9%	860	8%	-150	671	9%	39
62-Health Care & Social Assistance	561	7%	601	6%	-40	574	8%	-13
48-49 Transp & Warehousing	386	5%	447	4%	-61	450	6%	-64
72-Accommodation & Food Services	385	5%	465	5%	-80	353	5%	32
54-Prof, Scientific, & Tech. Svcs	357	5%	448	4%	-91	309	4%	48
42-Wholesale Trade	298	4%	347	3%	-49	401	5%	-103
52-Finance & Insurance	209	3%	208	2%	1	167	2%	42
92-Public Administration	164	2%	235	2%	-71	179	2%	-15
81-Other Services (ex Public Admin)	137	2%	186	2%	-49	154	2%	-17
51-Information	134	2%	118	1%	16	94	1%	40
61-Educational Services	123	2%	131	1%	-8	97	1%	26
71-Arts, Entertainment & Recreation	110	1%	208	2%	-98	101	1%	9
21-Mining	85	1%	115	1%	-30	159	2%	-74
53-Real Estate & Rental & Leasing	75	1%	95	1%	-20	106	1%	-31
55-Mgt of Companies & Enterprises	24	0%	24	0%	0	19	0%	5
22-Utilities	17	0%	56	1%	-39	15	0%	2
INA*	305	4%	361	4%	-56	624	8%	-319
Total	7,581		10,235		-2,654	7,541		40

Occupations	April 2017		March 2017		Monthly Difference	April 2016		Yearly Difference
47-Construction & Extraction	1,164	15%	2,175	21%	-1,011	1,244	16%	-80
45-Farming, Fishing & Forestry	970	13%	1,355	13%	-385	727	10%	243
41-Sales & related	760	10%	857	8%	-97	666	9%	94
51-Production	722	10%	782	8%	-60	594	8%	128
43-Office & Admin Support	591	8%	644	6%	-53	583	8%	8
53-Transp & Mat Moving	516	7%	828	8%	-312	655	9%	-139
35-Food Prep & Related	440	6%	508	5%	-68	413	5%	27
11-Management	311	4%	313	3%	-2	367	5%	-56
49-Install, Mainte & Repair	292	4%	452	4%	-160	326	4%	-34
37-Bld & Grd Cleaning & Maint	267	4%	597	6%	-330	215	3%	52
31-Healthcare Support	246	3%	251	2%	-5	217	3%	29
13-Business Financial	231	3%	226	2%	5	222	3%	9
15-Computer Math	197	3%	205	2%	-8	170	2%	27
29-Healthcare Pract & Tech	139	2%	138	1%	1	141	2%	-2
39-Personal Care & Svcs	113	1%	137	1%	-24	106	1%	7
17-Architect & Engineer	104	1%	146	1%	-42	103	1%	1
25-Ed Training & Library	94	1%	102	1%	-8	83	1%	11
27-Art Design, Entert Spt & Media	78	1%	96	1%	-18	73	1%	5
21-Community & Social Svcs	75	1%	95	1%	-20	85	1%	-10
33-Protective Svcs	51	1%	76	1%	-25	53	1%	-2
23-Legal	39	1%	40	0%	-1	36	0%	3
19-Life Phys Social	26	0%	31	0%	-5	42	1%	-16
55-Military Specific	4	0%	7	0%	-3	10	0%	-6
INA*	151	2%	174	2%	-23	410	5%	-259
Total	7,581		10,235		-2,654	7,541		40

** This data reflects UI claims characteristics for the pay period including the 12th of the month.

Unemployment Insurance Claimant Characteristics

April 2017



Communications & Research Bureau

Demographics	April 2017		March 2017		Monthly Difference	April 2016		Yearly Difference
Gender:								
Male	4,757	62.7%	7,152	69.9%	(2,395)	4,787	63.5%	-30
Female	2,823	37.2%	3,082	30.1%	(259)	2,753	36.5%	70
INA	1	0.0%	1	0.0%	-	1	0.0%	0
Total	7,581		10,235		(2,654)	7,541		40
Race: NOTE: Claimants may choose more than one Race category								
Native American	395	N/A	574	N/A	(179)	314	N/A	81
Asian	147	N/A	154	N/A	(7)	101	N/A	46
African American	149	N/A	193	N/A	(44)	99	N/A	50
Pacific Islander	65	N/A	103	N/A	(38)	68	N/A	-3
White	7,805	N/A	11,372	N/A	(3,567)	9,125	N/A	-1320
INA	2,083	N/A	5,278	N/A	(3,195)	1,496	N/A	587
Ethnicity:								
Hispanic/Latino	820	10.8%	1,259	12.3%	(439)	802	10.6%	18
Non-Hispanic/Latino	5,465	72.1%	7,228	70.6%	(1,763)	4,972	65.9%	493
INA	1,296	17.1%	1,748	17.1%	(452)	1,767	23.4%	-471
Age:								
<22	183	2.4%	274	2.7%	(91)	162	2.1%	21
22-24	308	4.1%	468	4.6%	(160)	282	3.7%	26
25-34	1,481	19.5%	2,069	20.2%	(588)	1,448	19.2%	33
35-44	1,566	20.7%	2,120	20.7%	(554)	1,432	19.0%	134
45-54	1,792	23.6%	2,340	22.9%	(548)	1,779	23.6%	13
55-59	1,008	13.3%	1,339	13.1%	(331)	910	12.1%	98
60-64	695	9.2%	872	8.5%	(177)	701	9.3%	-6
>=65	544	7.2%	750	7.3%	(206)	806	10.7%	-262
Total	7,577		10,232		(2,655)	7,520		57

**Unemployment Insurance
Claimant Characteristics
April 2017**



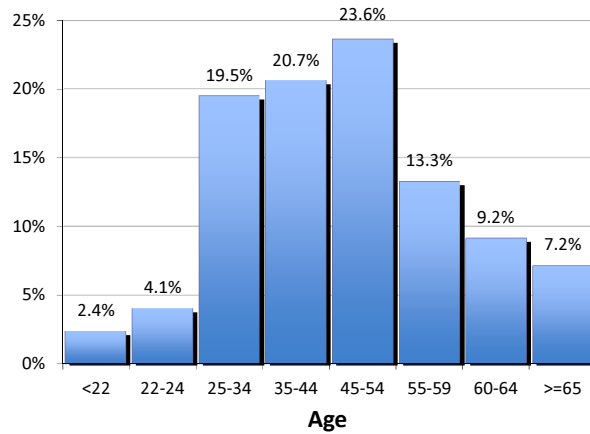
Communications & Research Bureau

Gender of the Insured Unemployed

Male	4,757	62.7%
Female	2,823	37.2%
N/A	1	0.0%
Total	7,581	100%

Age of the Insured Unemployed

<22	183	2.4%
22-24	308	4.1%
25-34	1,481	19.5%
35-44	1,566	20.7%
45-54	1,792	23.6%
55-59	1,008	13.3%
60-64	695	9.2%
>=65	544	7.2%
INA	4	INA
Total	7,581	100%



Race of the Insured Unemployed

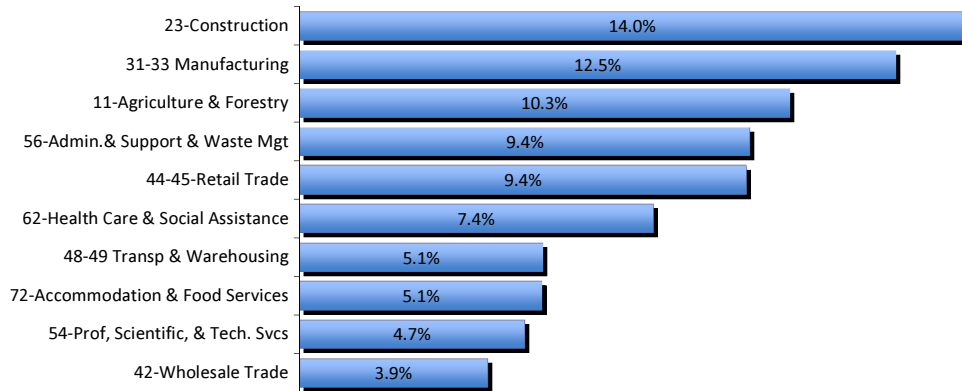
Native Am.	395	3.7%
Asian	147	1.4%
African Am.	149	1.4%
Pacific Islander	65	0.6%
White	7,805	73.3%
INA	2,083	19.6%
* Total	10,644	100%

Ethnicity of the Insured Unemployed

Hispanic/Latino	820	10.8%
Non-Hispanic/Latino	5,465	72.1%
INA	1,296	17.1%
Total	7,581	100.0%

* Some Claimants choose more than one race category

What industries did the claimants work in?



What occupations did the claimants hold?

