

# Unemployment Insurance Claimant Characteristics

May 2017



Communications & Research Bureau

Industry	May 2017		April 2017		Monthly Difference	May 2016		Yearly Difference
31-33 Manufacturing	655	11%	948	13%	-293	805	13%	-150
44-45-Retail Trade	644	11%	710	9%	-66	634	10%	10
62-Health Care & Social Assistance	606	10%	561	7%	45	623	10%	-17
23-Construction	595	10%	1,058	14%	-463	562	9%	33
56-Admin. & Support & Waste Mgt	573	10%	716	9%	-143	568	9%	5
11-Agriculture & Forestry	365	6%	779	10%	-414	260	4%	105
72-Accommodation & Food Services	350	6%	385	5%	-35	320	5%	30
48-49 Transp & Warehousing	330	6%	386	5%	-56	315	5%	15
54-Prof, Scientific, & Tech. Svcs	310	5%	357	5%	-47	306	5%	4
42-Wholesale Trade	265	5%	298	4%	-33	353	6%	-88
52-Finance & Insurance	198	3%	209	3%	-11	163	3%	35
92-Public Administration	136	2%	164	2%	-28	136	2%	0
81-Other Services (ex Public Admin)	128	2%	137	2%	-9	133	2%	-5
51-Information	124	2%	134	2%	-10	102	2%	22
61-Educational Services	101	2%	123	2%	-22	112	2%	-11
71-Arts, Entertainment & Recreation	91	2%	110	1%	-19	75	1%	16
53-Real Estate & Rental & Leasing	53	1%	75	1%	-22	88	1%	-35
21-Mining	39	1%	85	1%	-46	131	2%	-92
55-Mgt of Companies & Enterprises	15	0%	24	0%	-9	24	0%	-9
22-Utilities	9	0%	17	0%	-8	8	0%	1
INA*	266	5%	305	4%	-39	557	9%	-291
<b>Total</b>	<b>5,853</b>		<b>7,581</b>		<b>-1,728</b>	<b>6,275</b>		<b>-422</b>

Occupations	May 2017		April 2017		Monthly Difference	May 2016		Yearly Difference
41-Sales & related	691	12%	760	10%	-69	715	11%	-24
47-Construction & Extraction	647	11%	1,164	15%	-517	773	12%	-126
43-Office & Admin Support	573	10%	591	8%	-18	549	9%	24
51-Production	498	9%	722	10%	-224	623	10%	-125
45-Farming, Fishing & Forestry	481	8%	970	13%	-489	327	5%	154
53-Transp & Mat Moving	396	7%	516	7%	-120	476	8%	-80
35-Food Prep & Related	362	6%	440	6%	-78	370	6%	-8
11-Management	276	5%	311	4%	-35	354	6%	-78
31-Healthcare Support	268	5%	246	3%	22	221	4%	47
13-Business Financial	237	4%	231	3%	6	239	4%	-2
15-Computer Math	221	4%	197	3%	24	173	3%	48
49-Install, Mainte & Repair	210	4%	292	4%	-82	260	4%	-50
37-Bld & Grd Cleaning & Maint	152	3%	267	4%	-115	154	2%	-2
29-Healthcare Pract & Tech	130	2%	139	2%	-9	122	2%	8
25-Ed Training & Library	117	2%	94	1%	23	130	2%	-13
39-Personal Care & Svcs	112	2%	113	1%	-1	99	2%	13
17-Architect & Engineer	87	1%	104	1%	-17	92	1%	-5
27-Art Design, Entert Spt & Media	81	1%	78	1%	3	68	1%	13
21-Community & Social Svcs	64	1%	75	1%	-11	97	2%	-33
33-Protective Svcs	46	1%	51	1%	-5	35	1%	11
23-Legal	32	1%	39	1%	-7	37	1%	-5
19-Life Phys Social	22	0%	26	0%	-4	45	1%	-23
55-Military Specific	7	0%	4	0%	3	7	0%	0
INA*	143	2%	151	2%	-8	309	5%	-166
<b>Total</b>	<b>5,853</b>		<b>7,581</b>		<b>-1,728</b>	<b>6,275</b>		<b>-422</b>

\*\* This data reflects UI claims characteristics for the pay period including the 12th of the month.

# Unemployment Insurance Claimant Characteristics

May 2017



Communications & Research Bureau

Demographics	May 2017		April 2017		Monthly Difference	May 2016		Yearly Difference
<b>Gender:</b>								
Male	3,282	56.1%	4,757	62.7%	(1,475)	3,586	57.1%	-304
Female	2,570	43.9%	2,823	37.2%	(253)	2,688	42.8%	-118
INA	1	0.0%	1	0.0%	-	1	0.0%	0
<b>Total</b>	<b>5,853</b>		<b>7,581</b>		<b>(1,728)</b>	<b>6,275</b>		<b>-422</b>
<b>Race:</b> NOTE: Claimants may choose more than one Race category								
Native American	311	N/A	395	N/A	(84)	265	N/A	46
Asian	118	N/A	147	N/A	(29)	98	N/A	20
African American	121	N/A	149	N/A	(28)	99	N/A	22
Pacific Islander	52	N/A	65	N/A	(13)	57	N/A	-5
White	7,291	N/A	7,805	N/A	(514)	7,008	N/A	283
INA	1,620	N/A	2,083	N/A	(463)	1,456	N/A	164
<b>Ethnicity:</b>								
Hispanic/Latino	628	10.7%	820	10.8%	(192)	775	12.4%	-147
Non-Hispanic/Latino	4,278	73.1%	5,465	72.1%	(1,187)	4,095	65.3%	183
INA	947	16.2%	1,296	17.1%	(349)	1,405	22.4%	-458
<b>Age:</b>								
<22	105	1.8%	183	2.4%	(78)	119	1.9%	-14
22-24	230	3.9%	308	4.1%	(78)	230	3.7%	0
25-34	1,103	18.8%	1,481	19.5%	(378)	1,200	19.1%	-97
35-44	1,223	20.9%	1,566	20.7%	(343)	1,204	19.2%	19
45-54	1,420	24.3%	1,792	23.6%	(372)	1,452	23.1%	-32
55-59	748	12.8%	1,008	13.3%	(260)	766	12.2%	-18
60-64	552	9.4%	695	9.2%	(143)	588	9.4%	-36
>=65	469	8.0%	544	7.2%	(75)	703	11.2%	-234
<b>Total</b>	<b>5,850</b>		<b>7,577</b>		<b>(1,727)</b>	<b>6,262</b>		<b>-412</b>

**Unemployment Insurance  
Claimant Characteristics  
May 2017**



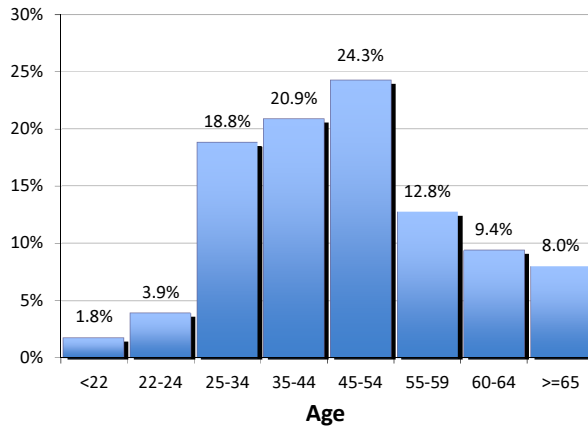
Communications & Research Bureau

**Gender of the Insured Unemployed**

Male	3,282	56.1%
Female	2,570	43.9%
N/A	1	0.0%
<b>Total</b>	<b>5,853</b>	<b>100%</b>

**Age of the Insured Unemployed**

<22	105	1.8%
22-24	230	3.9%
25-34	1,103	18.8%
35-44	1,223	20.9%
45-54	1,420	24.3%
55-59	748	12.8%
60-64	552	9.4%
>=65	469	8.0%
INA	3	INA
<b>Total</b>	<b>5,853</b>	<b>100%</b>



**Race of the Insured Unemployed**

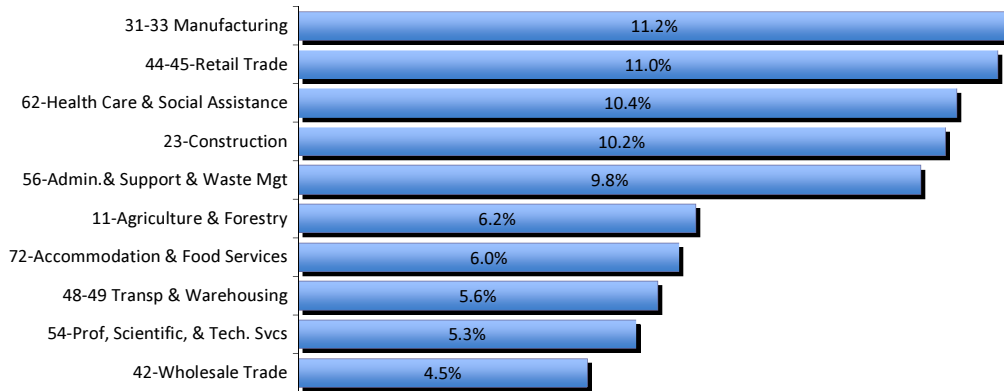
Native Am.	311	3.3%
Asian	118	1.2%
African Am.	121	1.3%
Pacific Islander	52	0.5%
White	7,291	76.6%
INA	1,620	17.0%
<b>* Total</b>	<b>9,513</b>	<b>100%</b>

**Ethnicity of the Insured Unemployed**

Hispanic/Latino	628	10.7%
Non-Hispanic/Latino	4,278	73.1%
INA	947	16.2%
<b>Total</b>	<b>5,853</b>	<b>100.0%</b>

\* Some Claimants choose more than one race category

**What industries did the claimants work in?**



**What occupations did the claimants hold?**

