

# Unemployment Insurance Claimant Characteristics

October 2017



Communications & Research Bureau

Industry	October 2017		September 2017		Monthly Difference	October 2016		Yearly Difference
62-Health Care & Social Assistance	521	13%	489	13%	32	507	9%	14
31-33 Manufacturing	495	12%	443	12%	52	851	16%	-356
44-45-Retail Trade	447	11%	444	12%	3	551	10%	-104
56-Admin.& Support & Waste Mgt	400	10%	359	9%	41	502	9%	-102
23-Construction	378	9%	315	8%	63	483	9%	-105
54-Prof, Scientific, & Tech. Svcs	258	6%	273	7%	-15	299	6%	-41
72-Accommodation & Food Services	254	6%	193	5%	61	274	5%	-20
42-Wholesale Trade	204	5%	241	6%	-37	225	4%	-21
52-Finance & Insurance	156	4%	149	4%	7	173	3%	-17
92-Public Administration	128	3%	115	3%	13	160	3%	-32
61-Educational Services	122	3%	112	3%	10	161	3%	-39
48-49 Transp & Warehousing	116	3%	109	3%	7	176	3%	-60
81-Other Services (ex Public Admin)	98	2%	95	2%	3	111	2%	-13
51-Information	86	2%	80	2%	6	98	2%	-12
71-Arts, Entertainment & Recreation	75	2%	47	1%	28	88	2%	-13
11-Agriculture & Forestry	61	1%	60	2%	1	121	2%	-60
53-Real Estate & Rental & Leasing	47	1%	39	1%	8	66	1%	-19
21-Mining	20	0%	21	1%	-1	43	1%	-23
55-Mgt of Companies & Enterprises	11	0%	15	0%	-4	18	0%	-7
22-Utilities	5	0%	3	0%	2	16	0%	-11
INA*	217	5%	206	5%	11	487	9%	-270
<b>Total</b>	<b>4,099</b>		<b>3,808</b>		<b>291</b>	<b>5,410</b>		<b>-1,311</b>

Occupations	October 2017		September 2017		Monthly Difference	October 2016		Yearly Difference
41-Sales & related	518	13%	517	14%	1	390	7%	128
47-Construction & Extraction	409	10%	339	9%	70	625	12%	-216
43-Office & Admin Support	391	10%	374	10%	17	867	16%	-476
51-Production	363	9%	348	9%	15	471	9%	-108
35-Food Prep & Related	285	7%	227	6%	58	239	4%	46
11-Management	259	6%	243	6%	16	398	7%	-139
31-Healthcare Support	216	5%	210	6%	6	88	2%	128
13-Business Financial	196	5%	205	5%	-9	202	4%	-6
53-Transp & Mat Moving	195	5%	173	5%	22	341	6%	-146
15-Computer Math	179	4%	185	5%	-6	8	0%	171
49-Install, Mainte & Repair	146	4%	141	4%	5	205	4%	-59
29-Healthcare Pract & Tech	113	3%	108	3%	5	102	2%	11
45-Farming, Fishing & Forestry	108	3%	103	3%	5	211	4%	-103
25-Ed Training & Library	98	2%	82	2%	16	90	2%	8
37-Bld & Grd Cleaning & Maint	98	2%	66	2%	32	145	3%	-47
39-Personal Care & Svcs	94	2%	81	2%	13	100	2%	-6
21-Community & Social Svcs	80	2%	75	2%	5	67	1%	13
27-Art Design, Entert Spt & Media	67	2%	60	2%	7	65	1%	2
17-Architect & Engineer	60	1%	58	2%	2	80	1%	-20
33-Protective Svcs	46	1%	43	1%	3	56	1%	-10
23-Legal	33	1%	27	1%	6	36	1%	-3
19-Life Phys Social	28	1%	23	1%	5	47	1%	-19
55-Military Specific	-	0%	1	0%	-1	3	0%	-3
INA*	117	3%	119	3%	-2	574	11%	-457
<b>Total</b>	<b>4,099</b>		<b>3,808</b>		<b>291</b>	<b>5,410</b>		<b>-1,311</b>

\*\* This data reflects UI claims characteristics for the pay period including the 12th of the month.

# Unemployment Insurance Claimant Characteristics

October 2017



Communications & Research Bureau

Demographics	October 2017		September 2017		Monthly Difference	October 2016		Yearly Difference
<b>Gender:</b>								
Male	2,111	51.5%	1,933	50.8%	178	2,988	55.2%	-877
Female	1,987	48.5%	1,874	49.2%	113	2,422	44.8%	-435
INA	1	0.0%	1	0.0%	-	0	0.0%	1
<b>Total</b>	<b>4,099</b>		<b>3,808</b>		<b>291</b>	<b>5,410</b>		<b>-1311</b>
<b>Race:</b> NOTE: Claimants may choose more than one Race category								
Native American	230	N/A	213	N/A	17	272	N/A	-42
Asian	96	N/A	108	N/A	(12)	148	N/A	-52
African American	98	N/A	95	N/A	3	104	N/A	-6
Pacific Islander	42	N/A	51	N/A	(9)	61	N/A	-19
White	5,109	N/A	4,545	N/A	564	7,015	N/A	-1906
INA	1,002	N/A	1,029	N/A	(27)	1,217	N/A	-215
<b>Ethnicity:</b>								
Hispanic/Latino	393	9.6%	415	10.9%	(22)	505	9.3%	-112
Non-Hispanic/Latino	3,080	75.1%	2,839	74.6%	241	3,841	71.0%	-761
INA	626	15.3%	554	14.5%	72	1,064	19.7%	-438
<b>Age:</b>								
<22	66	1.6%	49	1.3%	17	100	1.8%	-34
22-24	147	3.6%	130	3.4%	17	161	3.0%	-14
25-34	775	18.9%	722	19.0%	53	974	18.0%	-199
35-44	923	22.5%	876	23.0%	47	1,110	20.5%	-187
45-54	966	23.6%	895	23.5%	71	1,309	24.2%	-343
55-59	518	12.6%	491	12.9%	27	696	12.9%	-178
60-64	401	9.8%	363	9.5%	38	508	9.4%	-107
>=65	302	7.4%	280	7.4%	22	544	10.1%	-242
<b>Total</b>	<b>4,098</b>		<b>3,806</b>		<b>292</b>	<b>5,402</b>		<b>-1304</b>

**Unemployment Insurance  
Claimant Characteristics  
October 2017**



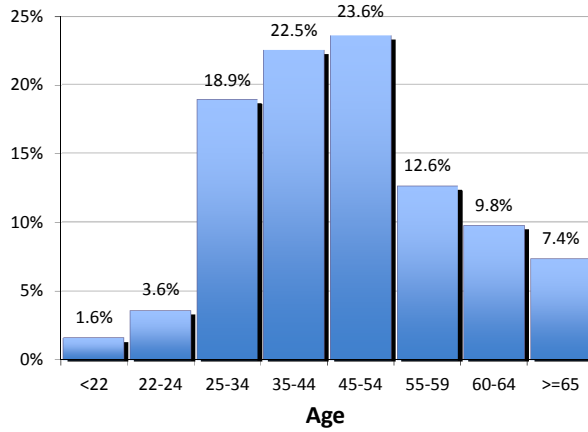
Communications & Research Bureau

**Gender of the Insured Unemployed**

Male	2,111	51.5%
Female	1,987	48.5%
N/A	1	0.0%
<b>Total</b>	<b>4,099</b>	<b>100%</b>

**Age of the Insured Unemployed**

<22	66	1.6%
22-24	147	3.6%
25-34	775	18.9%
35-44	923	22.5%
45-54	966	23.6%
55-59	518	12.6%
60-64	401	9.8%
>=65	302	7.4%
INA	1	INA
<b>Total</b>	<b>4,099</b>	<b>100%</b>



**Race of the Insured Unemployed**

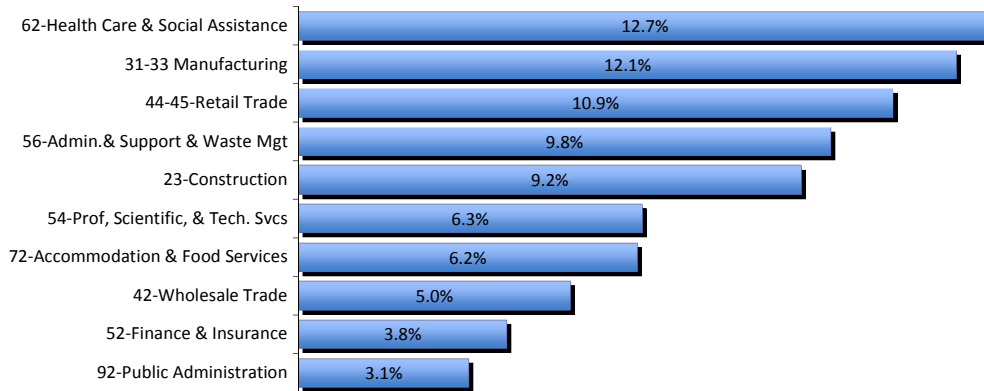
Native Am.	230	3.5%
Asian	96	1.5%
African Am.	98	1.5%
Pacific Islander	42	0.6%
White	5,109	77.7%
INA	1,002	15.2%
<b>* Total</b>	<b>6,577</b>	<b>100%</b>

**Ethnicity of the Insured Unemployed**

Hispanic/Latino	393	9.6%
Non-Hispanic/Latino	3,080	75.1%
INA	626	15.3%
<b>Total</b>	<b>4,099</b>	<b>100.0%</b>

\* Some Claimants choose more than one race category

**What industries did the claimants work in?**



**What occupations did the claimants hold?**

