

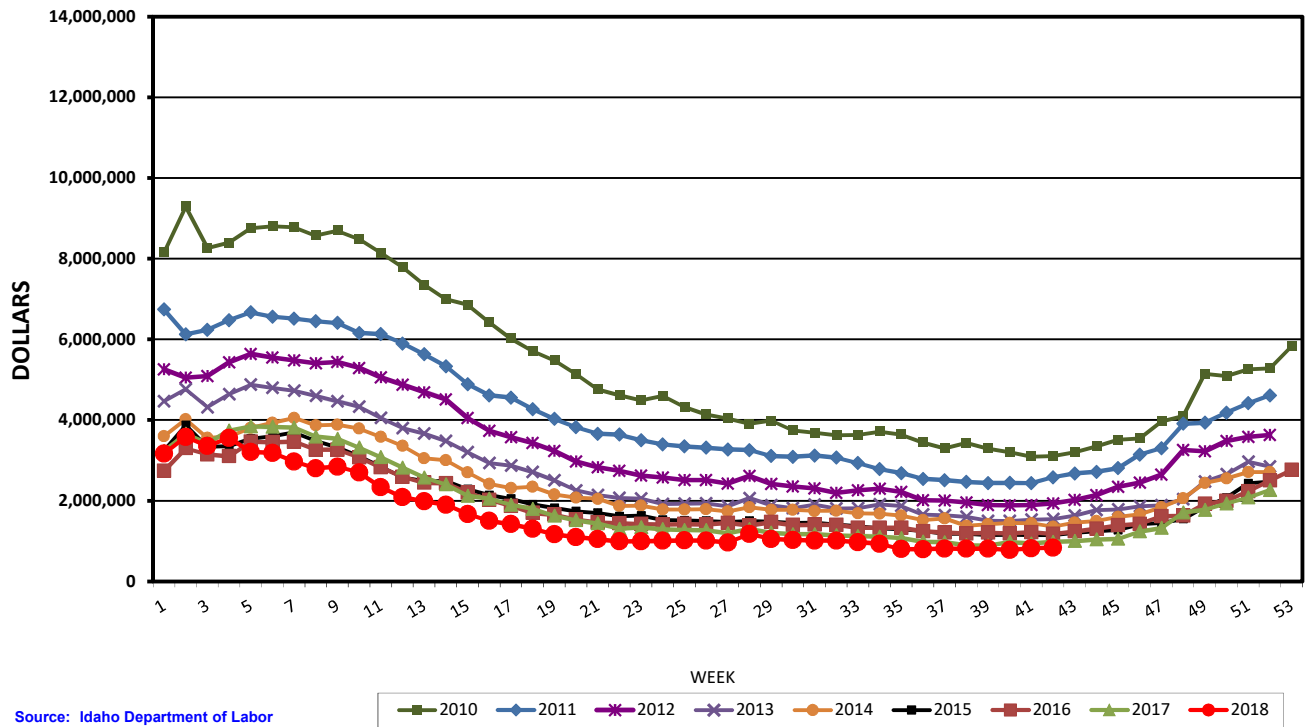
IDAHO DEPARTMENT OF LABOR
UNEMPLOYMENT INSURANCE PROGRAM EXCLUDING UCFE AND UCX
WEEKS PAID REGULAR UI ONLY

											2017 to 2018 Yearly Change			
	2009	2010	2011	2012	2013	2014	2015	2016	2017	2018	Amount	Percent	Amount	Percent
1ST QTR	507,037	437,976	344,218	284,822	231,348	180,160	148,989	142,883	144,392	121,892	-22,500	-15.6%		
2ND QTR	428,332	293,521	226,565	175,699	129,752	104,883	84,477	70,849	70,242	52,266	-17,976	-25.6%		
3RD QTR	293,073	209,470	165,316	125,699	96,267	81,190	62,862	54,766	48,721	41,546	-7,175	-14.7%		
4TH QTR	295,627	250,224	187,851	144,756	104,110	90,054	70,963	78,135	60,259		-60,259	-100.0%		
ANNUAL	1,524,069	1,191,191	923,950	730,976	561,477	456,287	367,291	346,633	323,614		-323,614	-100.0%		
WEEK	2009	2010	2011	2012	2013	2014	2015	2016	2017	2018	Change From Last Year		Change From Last Week	
											Amount	Percent	Amount	Percent
2017 50	26,979	21,815	18,104	14,500	10,330	9,222	7,163	6,650	6,377	10,292	-273	-4.1%	511	7.9%
2017 51	28,876	22,461	18,992	14,924	11,446	9,806	8,324	7,405	6,848	7,454	-557	-7.5%	471	7.1%
2017 52	28,929	22,581	19,629	15,049	11,017	9,653	8,462	8,262	7,454		-808	-9.8%	606	8.2%
1	33,758	32,265	28,183	22,016	18,018	13,627	11,471	9,159	10,528	10,292	-236	-2.2%	2,838	38.1%
2	38,007	36,210	25,865	21,340	19,246	15,227	13,571	11,028	11,787	11,525	-262	-2.2%	1,233	12.0%
3	34,296	32,588	26,145	21,372	17,562	13,584	11,784	10,577	11,160	10,909	-251	-2.2%	-616	-5.3%
4	35,785	33,282	27,221	22,837	18,565	13,566	11,802	10,481	12,177	11,586	-591	-4.9%	677	6.2%
5	38,173	34,903	27,781	23,571	19,470	14,354	12,359	11,749	12,491	10,288	-2,203	-17.6%	-1,298	-11.2%
6	39,097	35,203	27,635	23,273	19,248	14,753	12,579	11,691	12,434	10,259	-2,175	-17.5%	-29	-0.3%
7	39,918	35,150	27,325	22,925	18,976	15,139	12,833	11,648	12,386	9,611	-2,775	-22.4%	-648	-6.3%
8	40,857	34,393	27,118	22,494	18,493	14,433	12,140	10,994	11,739	9,069	-2,670	-22.7%	-542	-5.6%
9	41,734	35,009	26,811	22,528	17,949	14,456	11,550	10,979	11,550	9,157	-2,393	-20.7%	88	1.0%
10	41,832	34,235	25,847	21,908	17,260	14,070	10,928	10,273	10,815	8,655	-2,160	-20.0%	-502	-5.5%
11	41,449	32,964	25,707	20,808	16,819	13,218	10,021	9,464	9,942	7,492	-2,450	-24.6%	-1,163	-13.4%
12	41,355	31,667	24,769	20,225	15,121	12,449	9,155	8,624	9,081	6,711	-2,370	-26.1%	-781	-10.4%
13	40,776	30,107	23,811	19,525	14,621	11,284	8,759	8,127	8,302	6,338	-1,964	-23.7%	-373	-5.6%
14	40,612	28,728	22,627	18,773	13,873	11,056	8,771	8,089	7,824	6,124	-1,700	-21.7%	-214	-3.4%
15	39,172	28,191	20,761	16,856	12,740	9,934	8,035	7,279	6,858	5,269	-1,589	-23.2%	-855	-14.0%
16	37,636	26,521	19,695	15,619	11,725	8,881	7,503	6,657	6,596	4,709	-1,887	-28.6%	-560	-10.6%
17	36,883	24,954	19,475	14,967	11,484	8,519	7,153	6,202	6,116	4,482	-1,634	-26.7%	-227	-4.8%
18	35,180	23,877	18,359	14,427	10,810	8,621	6,725	5,689	5,784	4,098	-1,686	-29.1%	-384	-8.6%
19	34,474	23,058	17,337	13,682	10,122	7,908	6,400	5,496	5,271	3,712	-1,559	-29.6%	-386	-9.4%
20	32,911	21,861	16,538	12,615	9,186	7,626	6,135	5,147	4,971	3,553	-1,418	-28.5%	-159	-4.3%
21	31,126	20,399	15,901	12,203	8,792	7,675	5,995	4,941	4,724	3,392	-1,332	-28.2%	-161	-4.5%
22	29,617	19,874	15,867	11,804	8,491	7,044	5,716	4,872	4,323	3,211	-1,112	-25.7%	-181	-5.3%
23	29,156	19,350	15,471	11,439	8,441	7,110	5,763	4,814	4,503	3,260	-1,243	-27.6%	49	1.5%
24	27,298	19,764	15,074	11,277	7,985	6,790	5,425	4,822	4,431	3,414	-1,017	-23.0%	154	4.7%
25	27,451	18,805	14,821	11,043	8,044	6,835	5,389	4,930	4,394	3,516	-878	-20.0%	102	3.0%
26	26,816	18,139	14,639	11,020	8,059	6,884	5,467	4,925	4,447	3,526	-921	-20.7%	10	0.3%
27	25,374	17,846	14,407	10,671	7,751	6,692	5,325	5,075	4,178	3,380	-798	-19.1%	-146	-4.1%
28	26,445	17,220	14,414	11,374	8,612	7,029	5,438	4,847	4,537	4,059	-478	-10.5%	679	20.1%
29	24,781	17,592	13,894	10,616	7,815	6,757	5,385	4,251	4,251	3,664	-587	-13.8%	-395	-9.7%
30	23,695	16,591	13,802	10,356	7,593	6,772	5,250	4,882	4,169	3,632	-537	-12.9%	-32	-0.9%
31	22,990	16,396	13,897	10,100	7,907	6,708	5,293	4,944	4,112	3,573	-539	-13.1%	-59	-1.6%
32	22,652	16,091	13,707	9,654	7,544	6,694	5,137	4,932	3,992	3,563	-429	-10.7%	-10	-0.3%
33	22,431	16,043	13,090	9,968	7,614	6,474	5,009	4,684	3,898	3,439	-459	-11.8%	-124	-3.5%
34	21,844	16,421	12,430	9,960	7,852	6,378	4,759	4,682	3,777	3,257	-520	-13.8%	-182	-5.3%
35	22,158	16,146	11,921	9,569	7,743	6,101	4,593	4,587	3,545	2,644	-901	-25.4%	-613	-18.8%
36	21,094	15,179	11,202	8,579	6,774	5,630	4,424	4,200	3,220	2,567	-653	-20.3%	-77	-2.9%
37	20,222	14,554	11,024	8,614	6,625	5,785	4,130	3,992	3,168	2,594	-574	-18.1%	27	1.1%
38	20,107	14,990	10,846	8,256	6,361	5,019	4,099	3,899	2,952	2,569	-383	-13.0%	-25	-1.0%
39	19,280	14,401	10,682	7,982	6,076	5,151	4,020	3,958	2,922	2,605	-317	-10.8%	36	1.4%
40	19,018	14,112	10,687	7,892	5,942	5,241	4,061	3,906	3,202	2,497	-705	-22.0%	-108	-4.1%
41	18,857	13,560	10,706	7,910	6,082	5,261	4,029	3,998	3,063	2,635	-428	-14.0%	138	5.5%
42	18,579	13,602	11,210	8,125	6,161	4,967	3,996	3,878	3,279	2,661	-618	-18.8%	26	1.0%
YTD REGULAR WEEKS PAID	1,284,896	982,241	768,702	610,147	475,552	381,702	308,414	280,280	272,899	223,497	-49,402	-18.1%		

This week, just 26 more people received regular UI benefits than last week, bringing the weekly total to 2,661. Compared to last year, 618 fewer people obtained regular UI compensation, which is 18.8 percent less than the forty-second week of 2017. The number of weeks compensated does not equate to the number of people receiving benefits. This is because it is possible for an individual to receive multiple weeks of compensation under certain circumstances. The total number of people who have received benefits this week for all regular programs, including UI, UCFE and UCX claimants is 2,496.

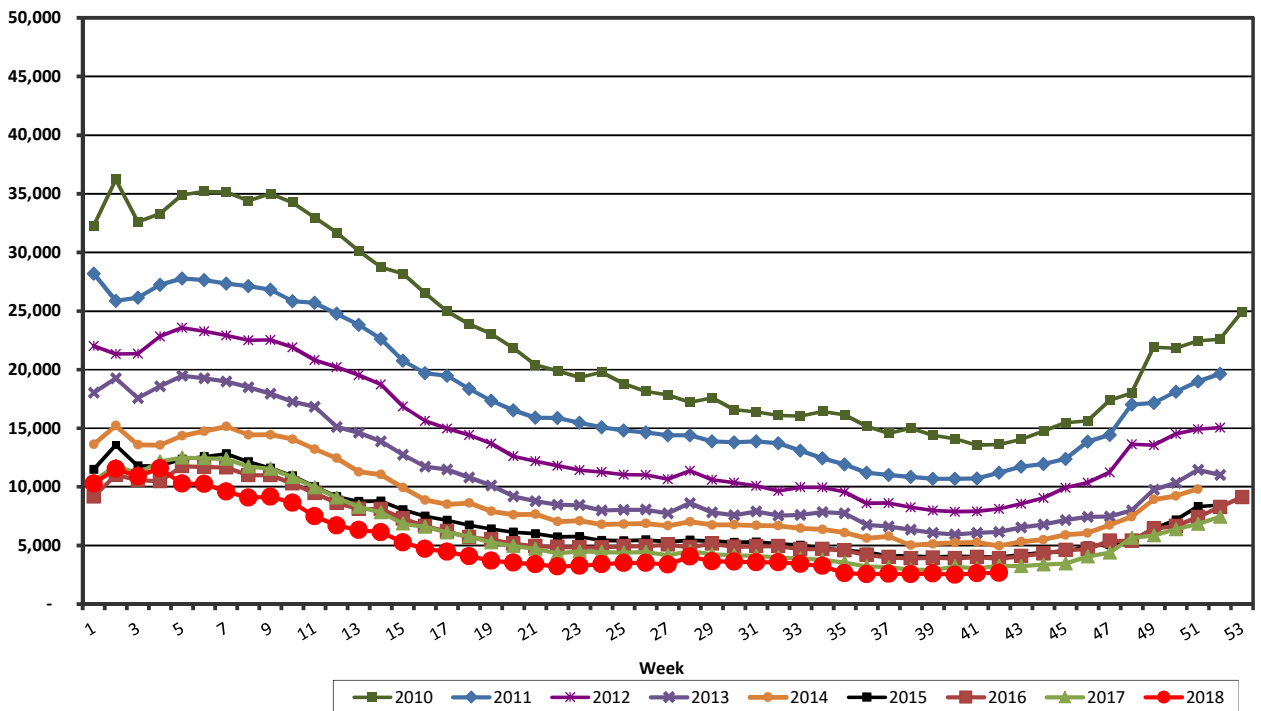
Source: Idaho Department of Labor
 Research and Communications Department

Benefits Paid for Week Ending 10/20/2018 Regular Only



Source: Idaho Department of Labor
Communications and Research Division

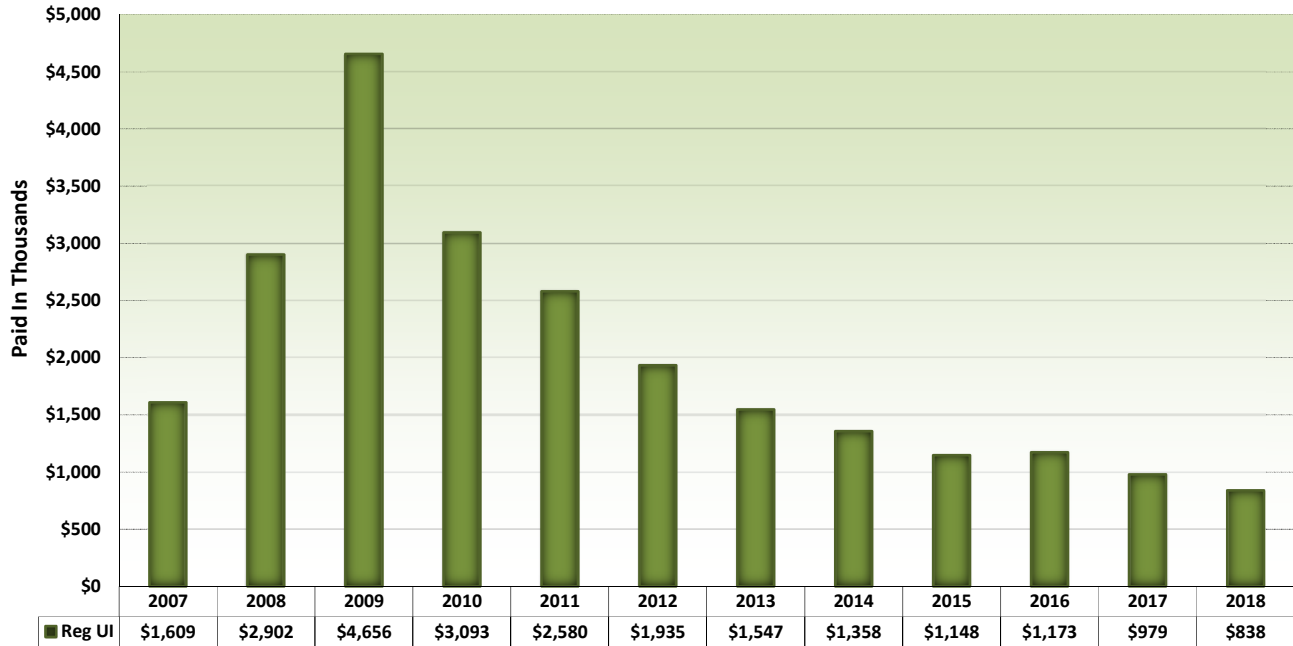
Weeks Compensated for Week Ending 10/20/2018 Regular Only



Source: Idaho Department of Labor
Communication and Research Division

Total Benefits Paid

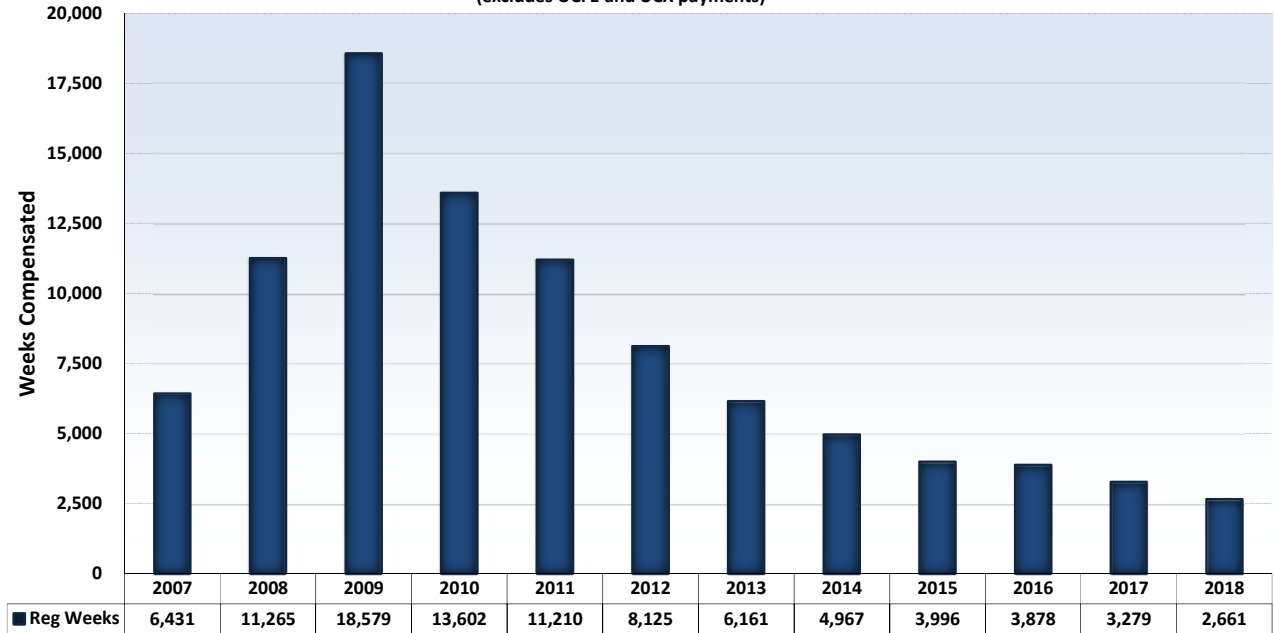
Forty-Second Week of Each Year 2007- 2018
(excludes UCFE and UCX payments)



Regular UI Benefits Excludes UCFE and UCX payments

Total Weeks Compensated

Forty-Second Week of Each Year 2007 - 2018
(excludes UCFE and UCX payments)



Regular UI Benefits Excludes UCFE and UCX weeks compensated