

Unemployment Insurance Claimant Characteristics

February 2018



Communications & Research Bureau

Industry	February 2018		January 2017		Monthly Difference	February 2017		Yearly Difference
23-Construction	2,457	23%	3,000	25%	-543	3,303	26%	-846
56-Admin. & Support & Waste Mgt	1,540	15%	1,792	15%	-252	1,768	14%	-228
31-33 Manufacturing	907	9%	1,057	9%	-150	1,310	10%	-403
11-Agriculture & Forestry	889	8%	885	7%	4	1,137	9%	-248
44-45-Retail Trade	884	8%	959	8%	-75	1,120	9%	-236
62-Health Care & Social Assistance	589	6%	674	6%	-85	651	5%	-62
72-Accommodation & Food Services	430	4%	512	4%	-82	547	4%	-117
54-Prof, Scientific, & Tech. Svcs	382	4%	428	4%	-46	505	4%	-123
48-49 Transp & Warehousing	366	3%	367	3%	-1	391	3%	-25
42-Wholesale Trade	364	3%	429	4%	-65	481	4%	-117
92-Public Administration	288	3%	345	3%	-57	345	3%	-57
71-Arts, Entertainment & Recreation	248	2%	317	3%	-69	296	2%	-48
81-Other Services (ex Public Admin)	193	2%	217	2%	-24	233	2%	-40
52-Finance & Insurance	140	1%	173	1%	-33	214	2%	-74
53-Real Estate & Rental & Leasing	116	1%	102	1%	14	107	1%	9
61-Educational Services	116	1%	99	1%	17	155	1%	-39
51-Information	102	1%	108	1%	-6	127	1%	-25
21-Mining	101	1%	150	1%	-49	116	1%	-15
22-Utilities	57	1%	60	0%	-3	70	1%	-13
55-Mgt of Companies & Enterprises	11	0%	14	0%	-3	15	0%	-4
INA*	341	3%	453	4%	-112	7	0%	334
Total	10,521		12,141		-1,620	12,898		-2,377

Occupations	February 2018		January 2017		Monthly Difference	February 2017		Yearly Difference
47-Construction & Extraction	2,386	23%	2,971	24%	-585	3,309	26%	-923
45-Farming, Fishing & Forestry	1,070	10%	1,116	9%	-46	1,492	12%	-422
37-Bld & Grd Cleaning & Maint	1,026	10%	1,224	10%	-198	1,038	8%	-12
53-Transp & Mat Moving	1,015	10%	1,255	10%	-240	1,110	9%	-95
43-Office & Admin Support	768	7%	792	7%	-24	652	5%	116
11-Management	645	6%	703	6%	-58	319	2%	326
41-Sales & related	603	6%	676	6%	-73	935	7%	-332
51-Production	600	6%	663	5%	-63	787	6%	-187
49-Install, Mainte & Repair	524	5%	592	5%	-68	612	5%	-88
35-Food Prep & Related	414	4%	456	4%	-42	577	4%	-163
31-Healthcare Support	189	2%	220	2%	-31	253	2%	-64
13-Business Financial	186	2%	219	2%	-33	242	2%	-56
17-Architect & Engineer	146	1%	153	1%	-7	172	1%	-26
29-Healthcare Pract & Tech	136	1%	139	1%	-3	111	1%	25
15-Computer Math	120	1%	155	1%	-35	197	2%	-77
33-Protective Svcs	100	1%	98	1%	2	85	1%	15
39-Personal Care & Svcs	94	1%	121	1%	-27	142	1%	-48
25-Ed Training & Library	93	1%	114	1%	-21	137	1%	-44
21-Community & Social Svcs	79	1%	102	1%	-23	88	1%	-9
27-Art Design, Entert Spt & Media	75	1%	93	1%	-18	103	1%	-28
19-Life Phys Social	74	1%	87	1%	-13	32	0%	42
23-Legal	23	0%	34	0%	-11	38	0%	-15
55-Military Specific	5	0%	9	0%	-4	7	0%	-2
INA*	150	1%	149	1%	1	460	4%	-310
Total	10,521		12,141		-1,620	12,898		-2,377

** This data reflects UI claims characteristics for the pay period including the 12th of the month.

Unemployment Insurance Claimant Characteristics

February 2018



Communications & Research Bureau

Demographics	February 2018		January 2017		Monthly Difference	February 2017		Yearly Difference
Gender:								
Male	7,675	72.9%	8,921	73.5%	(1,246)	9,512	73.7%	-1837
Female	2,841	27.0%	3,213	26.5%	(372)	3,386	26.3%	-545
INA	5	0.0%	7	0.1%	(2)	0	0.0%	5
Total	10,521		12,141		(1,620)	12,898		-2377
Race: NOTE: Claimants may choose more than one Race category								
Native American	708	N/A	803	N/A	(95)	772	N/A	-64
Asian	143	N/A	153	N/A	(10)	179	N/A	-36
African American	238	N/A	256	N/A	(18)	216	N/A	22
Pacific Islander	126	N/A	144	N/A	(18)	100	N/A	26
White	11,372	N/A	13,173	N/A	(1,801)	19,173	N/A	-7801
INA	4,804	N/A	5,785	N/A	(981)	5,278	N/A	-474
Ethnicity:								
Hispanic/Latino	1,667	15.8%	2,111	17.4%	(444)	2,211	17.1%	-544
Non-Hispanic/Latino	7,216	68.6%	8,176	67.3%	(960)	8,731	67.7%	-1515
INA	1,638	15.6%	1,854	15.3%	(216)	1,956	15.2%	-318
Age:								
<22	341	3.2%	403	3.3%	(62)	443	3.4%	-102
22-24	526	5.0%	618	5.1%	(92)	679	5.3%	-153
25-34	2,325	22.1%	2,615	21.5%	(290)	2,842	22.0%	-517
35-44	2,210	21.0%	2,585	21.3%	(375)	2,885	22.4%	-675
45-54	2,211	21.0%	2,550	21.0%	(339)	2,867	22.2%	-656
55-59	1,223	11.6%	1,394	11.5%	(171)	1,585	12.3%	-362
60-64	906	8.6%	985	8.1%	(79)	963	7.5%	-57
>=65	775	7.4%	989	8.1%	(214)	633	4.9%	142
Total	10,517		12,139		(1,622)	12,897		-2380

**Unemployment Insurance
Claimant Characteristics
February 2018**



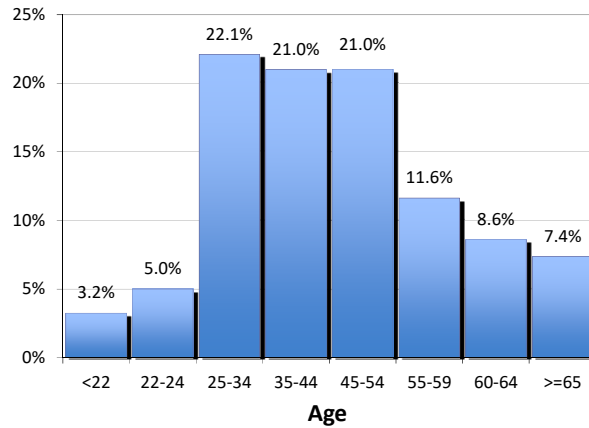
Communications & Research Bureau

Gender of the Insured Unemployed

Male	7,675	72.9%
Female	2,841	27.0%
N/A	5	0.0%
Total	10,521	100%

Age of the Insured Unemployed

<22	341	3.2%
22-24	526	5.0%
25-34	2,325	22.1%
35-44	2,210	21.0%
45-54	2,211	21.0%
55-59	1,223	11.6%
60-64	906	8.6%
>=65	775	7.4%
INA	4	INA
Total	10,521	100%



Race of the Insured Unemployed

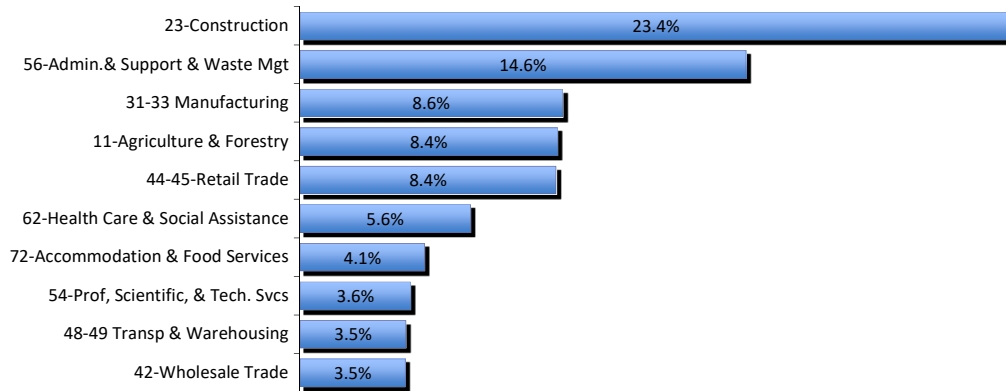
Native Am.	708	4.1%
Asian	143	0.8%
African Am.	238	1.4%
Pacific Islander	126	0.7%
White	11,372	65.4%
INA	4,804	27.6%
* Total	17,391	100%

Ethnicity of the Insured Unemployed

Hispanic/Latino	1,667	15.8%
Non-Hispanic/Latino	7,216	68.6%
INA	1,638	15.6%
Total	10,521	100.0%

* Some Claimants choose more than one race category

What industries did the claimants work in?



What occupations did the claimants hold?

