

# Unemployment Insurance Claimant Characteristics

March 2018



Communications & Research Bureau

Industry	March 2018	February 2018	Monthly Difference	March 2017	Yearly Difference
23-Construction	1,662 21%	2,457 23%	-795	1,987 19%	-325
56-Admin. & Support & Waste Mgt	979 12%	1,540 15%	-561	1,152 11%	-173
11-Agriculture & Forestry	811 10%	889 8%	-78	1,064 10%	-253
31-33 Manufacturing	719 9%	907 9%	-188	1,127 11%	-408
44-45-Retail Trade	658 8%	884 8%	-226	860 8%	-202
62-Health Care & Social Assistance	541 7%	589 6%	-48	601 6%	-60
48-49 Transp & Warehousing	341 4%	366 3%	-25	447 4%	-106
54-Prof, Scientific, & Tech. Svcs	335 4%	382 4%	-47	448 4%	-113
72-Accommodation & Food Services	312 4%	430 4%	-118	465 5%	-153
42-Wholesale Trade	265 3%	364 3%	-99	347 3%	-82
92-Public Administration	193 2%	288 3%	-95	235 2%	-42
81-Other Services (ex Public Admin)	152 2%	193 2%	-41	186 2%	-34
71-Arts, Entertainment & Recreation	141 2%	248 2%	-107	208 2%	-67
52-Finance & Insurance	138 2%	140 1%	-2	208 2%	-70
51-Information	108 1%	102 1%	6	118 1%	-10
61-Educational Services	90 1%	116 1%	-26	131 1%	-41
53-Real Estate & Rental & Leasing	88 1%	116 1%	-28	95 1%	-7
21-Mining	83 1%	101 1%	-18	115 1%	-32
22-Utilities	35 0%	57 1%	-22	56 1%	-21
55-Mgt of Companies & Enterprises	12 0%	11 0%	1	24 0%	-12
INA*	327 4%	341 3%	-14	361 4%	-34
<b>Total</b>	<b>7,990</b>	<b>10,521</b>	<b>-2,531</b>	<b>10,235</b>	<b>-2,245</b>

Occupations	March 2018	February 2018	Monthly Difference	March 2017	Yearly Difference
47-Construction & Extraction	1,627 20%	2,386 23%	-759	2,175 21%	-548
45-Farming, Fishing & Forestry	934 12%	1,070 10%	-136	1,355 13%	-421
53-Transp & Mat Moving	753 9%	1,015 10%	-262	828 8%	-75
43-Office & Admin Support	688 9%	768 7%	-80	644 6%	44
11-Management	526 7%	645 6%	-119	313 3%	213
37-Bld & Grd Cleaning & Maint	525 7%	1,026 10%	-501	597 6%	-72
51-Production	491 6%	600 6%	-109	782 8%	-291
41-Sales & related	490 6%	603 6%	-113	857 8%	-367
49-Install, Mainte & Repair	383 5%	524 5%	-141	452 4%	-69
35-Food Prep & Related	303 4%	414 4%	-111	508 5%	-205
13-Business Financial	164 2%	186 2%	-22	226 2%	-62
31-Healthcare Support	159 2%	189 2%	-30	251 2%	-92
29-Healthcare Pract & Tech	150 2%	136 1%	14	138 1%	12
17-Architect & Engineer	114 1%	146 1%	-32	146 1%	-32
15-Computer Math	102 1%	120 1%	-18	205 2%	-103
21-Community & Social Svcs	80 1%	79 1%	1	95 1%	-15
39-Personal Care & Svcs	74 1%	94 1%	-20	137 1%	-63
33-Protective Svcs	70 1%	100 1%	-30	76 1%	-6
25-Ed Training & Library	69 1%	93 1%	-24	102 1%	-33
27-Art Design, Entert Spt & Media	64 1%	75 1%	-11	96 1%	-32
19-Life Phys Social	49 1%	74 1%	-25	31 0%	18
23-Legal	24 0%	23 0%	1	40 0%	-16
55-Military Specific	4 0%	5 0%	-1	7 0%	-3
INA*	147 2%	150 1%	-3	174 2%	-27
<b>Total</b>	<b>7,990</b>	<b>10,521</b>	<b>-2,531</b>	<b>10,235</b>	<b>-2,245</b>

\*\* This data reflects UI claims characteristics for the pay period including the 12th of the month.

# Unemployment Insurance Claimant Characteristics

March 2018



Communications & Research Bureau

Demographics	March 2018		February 2018		Monthly Difference	March 2017		Yearly Difference
<b>Gender:</b>								
Male	5,558	69.6%	7,675	72.9%	(2,117)	7,152	69.9%	-1594
Female	2,428	30.4%	2,841	27.0%	(413)	3,082	30.1%	-654
INA	4	0.1%	5	0.0%	(1)	1	0.0%	3
<b>Total</b>	<b>7,990</b>		<b>10,521</b>		<b>(2,531)</b>	<b>10,235</b>		<b>-2245</b>
<b>Race:</b> NOTE: Claimants may choose more than one Race category								
Native American	503	N/A	708	N/A	(205)	574	N/A	-71
Asian	107	N/A	143	N/A	(36)	154	N/A	-47
African American	165	N/A	238	N/A	(73)	193	N/A	-28
Pacific Islander	85	N/A	126	N/A	(41)	103	N/A	-18
White	7,805	N/A	11,372	N/A	(3,567)	11,372	N/A	-3567
INA	3,067	N/A	4,804	N/A	(1,737)	5,278	N/A	-2211
<b>Ethnicity:</b>								
Hispanic/Latino	1,060	13.3%	1,667	15.8%	(607)	1,259	12.3%	-199
Non-Hispanic/Latino	5,697	71.3%	7,216	68.6%	(1,519)	7,228	70.6%	-1531
INA	1,233	15.4%	1,638	15.6%	(405)	1,748	17.1%	-515
<b>Age:</b>								
<22	214	2.7%	341	3.2%	(127)	274	2.7%	-60
22-24	341	4.3%	526	5.0%	(185)	468	4.6%	-127
25-34	1,568	19.6%	2,325	22.1%	(757)	2,069	20.2%	-501
35-44	1,728	21.6%	2,210	21.0%	(482)	2,120	20.7%	-392
45-54	1,759	22.0%	2,211	21.0%	(452)	2,340	22.9%	-581
55-59	985	12.3%	1,223	11.6%	(238)	1,339	13.1%	-354
60-64	740	9.3%	906	8.6%	(166)	872	8.5%	-132
>=65	654	8.2%	775	7.4%	(121)	750	7.3%	-96
<b>Total</b>	<b>7,989</b>		<b>10,517</b>		<b>(2,528)</b>	<b>10,232</b>		<b>-2243</b>

**Unemployment Insurance  
Claimant Characteristics  
March 2018**



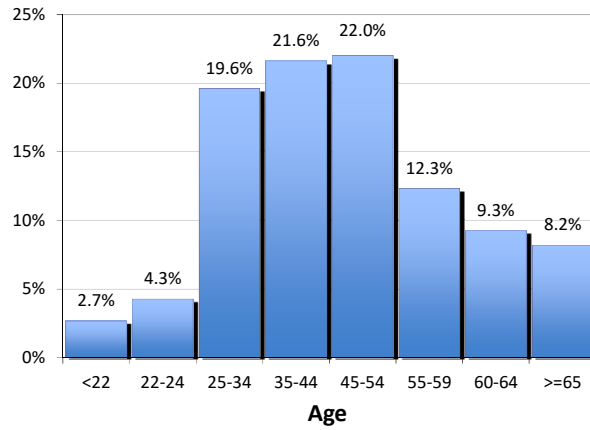
Communications & Research Bureau

**Gender of the Insured Unemployed**

Male	5,558	69.6%
Female	2,428	30.4%
N/A	4	0.05%
<b>Total</b>	<b>7,990</b>	<b>100%</b>

**Age of the Insured Unemployed**

<22	214	2.7%
22-24	341	4.3%
25-34	1,568	19.6%
35-44	1,728	21.6%
45-54	1,759	22.0%
55-59	985	12.3%
60-64	740	9.3%
>=65	654	8.2%
INA	1	INA
<b>Total</b>	<b>7,990</b>	<b>100%</b>



**Race of the Insured Unemployed**

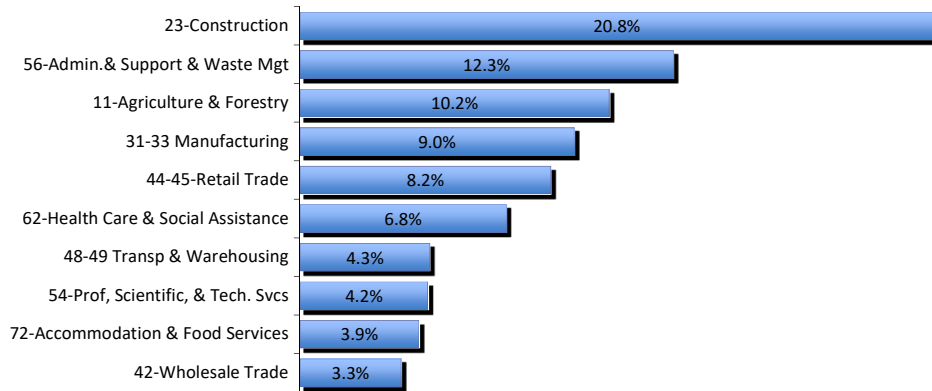
Native Am.	503	4.3%
Asian	107	0.9%
African Am.	165	1.4%
Pacific Islander	85	0.7%
White	7,805	66.5%
INA	3,067	26.1%
<b>* Total</b>	<b>11,732</b>	<b>100%</b>

**Ethnicity of the Insured Unemployed**

Hispanic/Latino	1,060	13.3%
Non-Hispanic/Latino	5,697	71.3%
INA	1,233	15.4%
<b>Total</b>	<b>7,990</b>	<b>100.0%</b>

\* Some Claimants choose more than one race category

**What industries did the claimants work in?**



**What occupations did the claimants hold?**

