

# Unemployment Insurance Claimant Characteristics

April 2018



Communications & Research Bureau

Industry	April 2018		March 2018		Monthly Difference	April 2017		Yearly Difference
23-Construction	859	15%	1,662	21%	-803	1,058	14%	-199
11-Agriculture & Forestry	622	11%	811	10%	-189	779	10%	-157
56-Admin. & Support & Waste Mgt	549	10%	979	12%	-430	716	9%	-167
31-33 Manufacturing	548	10%	719	9%	-171	948	13%	-400
44-45-Retail Trade	536	9%	658	8%	-122	710	9%	-174
62-Health Care & Social Assistance	466	8%	541	7%	-75	561	7%	-95
48-49 Transp & Warehousing	323	6%	341	4%	-18	386	5%	-63
72-Accommodation & Food Services	282	5%	312	4%	-30	385	5%	-103
54-Prof, Scientific, & Tech. Svcs	271	5%	335	4%	-64	357	5%	-86
42-Wholesale Trade	211	4%	265	3%	-54	298	4%	-87
81-Other Services (ex Public Admin)	130	2%	152	2%	-22	137	2%	-7
92-Public Administration	127	2%	193	2%	-66	164	2%	-37
52-Finance & Insurance	118	2%	138	2%	-20	209	3%	-91
51-Information	91	2%	108	1%	-17	134	2%	-43
71-Arts, Entertainment & Recreation	87	2%	141	2%	-54	110	1%	-23
53-Real Estate & Rental & Leasing	77	1%	88	1%	-11	75	1%	2
61-Educational Services	71	1%	90	1%	-19	123	2%	-52
21-Mining	60	1%	83	1%	-23	85	1%	-25
22-Utilities	15	0%	35	0%	-20	17	0%	-2
55-Mgt of Companies & Enterprises	11	0%	12	0%	-1	24	0%	-13
INA*	281	5%	327	4%	-46	305	4%	-24
<b>Total</b>	<b>5,735</b>		<b>7,990</b>		<b>-2,255</b>	<b>7,581</b>		<b>-1,846</b>

Occupations	April 2018		March 2018		Monthly Difference	April 2017		Yearly Difference
47-Construction & Extraction	831	14%	1,627	20%	-796	1,164	15%	-333
45-Farming, Fishing & Forestry	700	12%	934	12%	-234	970	13%	-270
43-Office & Admin Support	630	11%	688	9%	-58	591	8%	39
53-Transp & Mat Moving	507	9%	753	9%	-246	516	7%	-9
11-Management	473	8%	526	7%	-53	311	4%	162
41-Sales & related	433	8%	490	6%	-57	760	10%	-327
51-Production	416	7%	491	6%	-75	722	10%	-306
35-Food Prep & Related	262	5%	303	4%	-41	440	6%	-178
49-Install, Mainte & Repair	258	4%	383	5%	-125	292	4%	-34
37-Bld & Grd Cleaning & Maint	161	3%	525	7%	-364	267	4%	-106
13-Business Financial	150	3%	164	2%	-14	231	3%	-81
31-Healthcare Support	149	3%	159	2%	-10	246	3%	-97
29-Healthcare Pract & Tech	119	2%	150	2%	-31	139	2%	-20
15-Computer Math	97	2%	102	1%	-5	197	3%	-100
21-Community & Social Svcs	69	1%	80	1%	-11	75	1%	-6
39-Personal Care & Svcs	65	1%	74	1%	-9	113	1%	-48
17-Architect & Engineer	63	1%	114	1%	-51	104	1%	-41
25-Ed Training & Library	56	1%	69	1%	-13	94	1%	-38
27-Art Design, Entert Spt & Media	50	1%	64	1%	-14	78	1%	-28
33-Protective Svcs	44	1%	70	1%	-26	51	1%	-7
19-Life Phys Social	42	1%	49	1%	-7	26	0%	16
23-Legal	19	0%	24	0%	-5	39	1%	-20
55-Military Specific	1	0%	4	0%	-3	4	0%	-3
INA*	140	2%	147	2%	-7	151	2%	-11
<b>Total</b>	<b>5,735</b>		<b>7,990</b>		<b>-2,255</b>	<b>7,581</b>		<b>-1,846</b>

\*\* This data reflects UI claims characteristics for the pay period including the 12th of the month.

# Unemployment Insurance Claimant Characteristics

April 2018



Communications & Research Bureau

Demographics	April 2018		March 2018		Monthly Difference	April 2017		Yearly Difference
<b>Gender:</b>								
Male	3,674	64.1%	5,558	69.6%	(1,884)	4,757	62.7%	-1083
Female	2,061	35.9%	2,428	30.4%	(367)	2,823	37.2%	-762
INA	0	0.0%	4	0.1%	(4)	1	0.0%	-1
<b>Total</b>	<b>5,735</b>		<b>7,990</b>		<b>(2,255)</b>	<b>7,581</b>		<b>-1846</b>
<b>Race:</b> NOTE: Claimants may choose more than one Race category								
Native American	376	N/A	503	N/A	(127)	395	N/A	-19
Asian	105	N/A	107	N/A	(2)	147	N/A	-42
African American	133	N/A	165	N/A	(32)	149	N/A	-16
Pacific Islander	56	N/A	85	N/A	(29)	65	N/A	-9
White	6,569	N/A	7,805	N/A	(1,236)	7,805	N/A	-1236
INA	1,587	N/A	3,067	N/A	(1,480)	2,083	N/A	-496
<b>Ethnicity:</b>								
Hispanic/Latino	575	10.0%	1,060	13.3%	(485)	820	10.8%	-245
Non-Hispanic/Latino	4,272	74.5%	5,697	71.3%	(1,425)	5,465	72.1%	-1193
INA	888	15.5%	1,233	15.4%	(345)	1,296	17.1%	-408
<b>Age:</b>								
<22	115	2.0%	214	2.7%	(99)	183	2.4%	-68
22-24	217	3.8%	341	4.3%	(124)	308	4.1%	-91
25-34	1,040	18.1%	1,568	19.6%	(528)	1,481	19.5%	-441
35-44	1,252	21.8%	1,728	21.6%	(476)	1,566	20.7%	-314
45-54	1,306	22.8%	1,759	22.0%	(453)	1,792	23.6%	-486
55-59	768	13.4%	985	12.3%	(217)	1,008	13.3%	-240
60-64	577	10.1%	740	9.3%	(163)	695	9.2%	-118
>=65	457	8.0%	654	8.2%	(197)	544	7.2%	-87
<b>Total</b>	<b>5,732</b>		<b>7,989</b>		<b>(2,257)</b>	<b>7,577</b>		<b>-1845</b>

**Unemployment Insurance  
Claimant Characteristics  
April 2018**



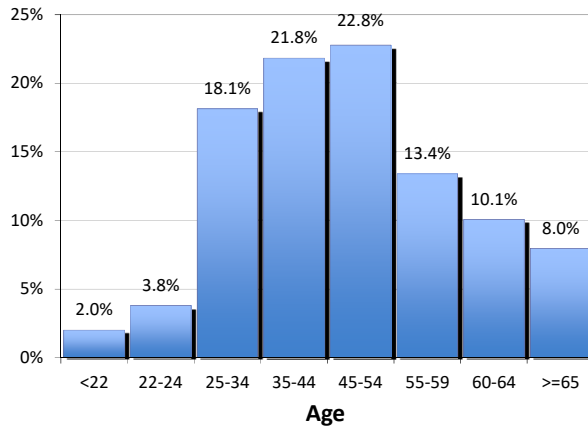
Communications & Research Bureau

**Gender of the Insured Unemployed**

Male	3,674	64.1%
Female	2,061	35.9%
N/A	0	0.00%
<b>Total</b>	<b>5,735</b>	<b>100%</b>

**Age of the Insured Unemployed**

<22	115	2.0%
22-24	217	3.8%
25-34	1,040	18.1%
35-44	1,252	21.8%
45-54	1,306	22.8%
55-59	768	13.4%
60-64	577	10.1%
>=65	457	8.0%
INA	3	INA
<b>Total</b>	<b>5,735</b>	<b>100%</b>



**Race of the Insured Unemployed**

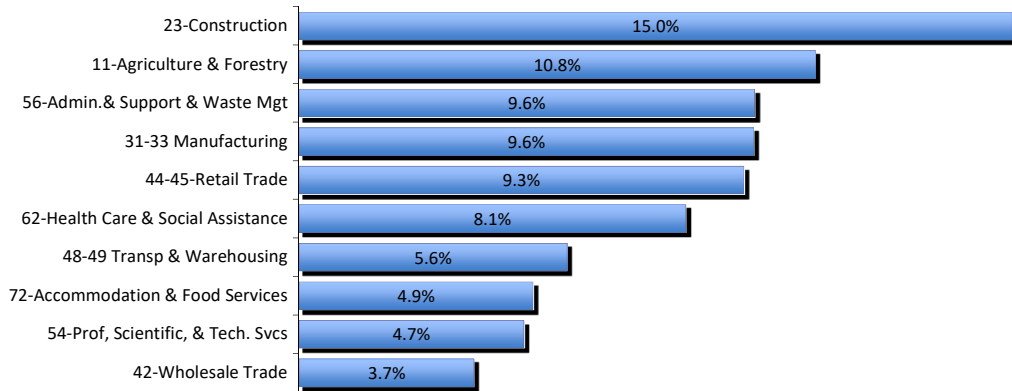
Native Am.	376	4.3%
Asian	105	1.2%
African Am.	133	1.5%
Pacific Islander	56	0.6%
White	6,569	74.4%
INA	1,587	18.0%
<b>* Total</b>	<b>8,826</b>	<b>100%</b>

**Ethnicity of the Insured Unemployed**

Hispanic/Latino	575	10.0%
Non-Hispanic/Latino	4,272	74.5%
INA	888	15.5%
<b>Total</b>	<b>5,735</b>	<b>100.0%</b>

\* Some Claimants choose more than one race category

**What industries did the claimants work in?**



**What occupations did the claimants hold?**

