

# Unemployment Insurance Claimant Characteristics

May 2018



Communications & Research Bureau

Industry	May 2018		April 2018		Monthly Difference	May 2017		Yearly Difference
31-33 Manufacturing	511	11%	548	10%	-37	655	11%	-144
62-Health Care & Social Assistance	485	11%	466	8%	19	606	10%	-121
44-45-Retail Trade	482	11%	536	9%	-54	644	11%	-162
23-Construction	463	10%	859	15%	-396	595	10%	-132
56-Admin. & Support & Waste Mgt	419	9%	549	10%	-130	573	10%	-154
54-Prof, Scientific, & Tech. Svcs	255	6%	271	5%	-16	310	5%	-55
72-Accommodation & Food Services	254	6%	282	5%	-28	350	6%	-96
11-Agriculture & Forestry	239	5%	622	11%	-383	365	6%	-126
48-49 Transp & Warehousing	219	5%	323	6%	-104	330	6%	-111
42-Wholesale Trade	200	4%	211	4%	-11	265	5%	-65
52-Finance & Insurance	134	3%	118	2%	16	198	3%	-64
81-Other Services (ex Public Admin)	102	2%	130	2%	-28	128	2%	-26
92-Public Administration	96	2%	127	2%	-31	136	2%	-40
71-Arts, Entertainment & Recreation	89	2%	87	2%	2	91	2%	-2
61-Educational Services	75	2%	71	1%	4	101	2%	-26
51-Information	74	2%	91	2%	-17	124	2%	-50
53-Real Estate & Rental & Leasing	67	1%	77	1%	-10	53	1%	14
21-Mining	24	1%	60	1%	-36	39	1%	-15
55-Mgt of Companies & Enterprises	12	0%	11	0%	1	15	0%	-3
22-Utilities	11	0%	15	0%	-4	9	0%	2
INA*	263	6%	281	5%	-18	266	5%	-3
<b>Total</b>	<b>4,474</b>		<b>5,735</b>		<b>-1,261</b>	<b>5,853</b>		<b>-1,379</b>

Occupations	May 2018		April 2018		Monthly Difference	May 2017		Yearly Difference
43-Office & Admin Support	587	13%	630	11%	-43	573	10%	14
11-Management	454	10%	473	8%	-19	276	5%	178
47-Construction & Extraction	438	10%	831	14%	-393	647	11%	-209
41-Sales & related	386	9%	433	8%	-47	691	12%	-305
51-Production	369	8%	416	7%	-47	498	9%	-129
53-Transp & Mat Moving	351	8%	507	9%	-156	396	7%	-45
45-Farming, Fishing & Forestry	286	6%	700	12%	-414	481	8%	-195
35-Food Prep & Related	253	6%	262	5%	-9	362	6%	-109
49-Install, Mainte & Repair	176	4%	258	4%	-82	210	4%	-34
13-Business Financial	169	4%	150	3%	19	237	4%	-68
31-Healthcare Support	150	3%	149	3%	1	268	5%	-118
29-Healthcare Pract & Tech	118	3%	119	2%	-1	130	2%	-12
15-Computer Math	97	2%	97	2%	0	221	4%	-124
37-Bld & Grd Cleaning & Maint	95	2%	161	3%	-66	152	3%	-57
21-Community & Social Svcs	72	2%	69	1%	3	64	1%	8
25-Ed Training & Library	70	2%	56	1%	14	117	2%	-47
17-Architect & Engineer	67	1%	63	1%	4	87	1%	-20
39-Personal Care & Svcs	55	1%	65	1%	-10	112	2%	-57
27-Art Design, Entert Spt & Media	53	1%	50	1%	3	81	1%	-28
19-Life Phys Social	41	1%	42	1%	-1	22	0%	19
33-Protective Svcs	38	1%	44	1%	-6	46	1%	-8
23-Legal	21	0%	19	0%	2	32	1%	-11
55-Military Specific	3	0%	1	0%	2	7	0%	-4
INA*	125	3%	140	2%	-15	143	2%	-18
<b>Total</b>	<b>4,474</b>		<b>5,735</b>		<b>-1,261</b>	<b>5,853</b>		<b>-1,379</b>

\*\* This data reflects UI claims characteristics for the pay period including the 12th of the month.

# Unemployment Insurance Claimant Characteristics

May 2018



Communications & Research Bureau

Demographics	May 2018		April 2018		Monthly Difference	May 2017		Yearly Difference
<b>Gender:</b>								
Male	2,435	54.4%	3,674	64.1%	-1,239	3,282	56.1%	-847
Female	2,038	45.6%	2,061	35.9%	-23	2,570	43.9%	-532
INA	1	0.0%	0	0.0%	1	1	0.0%	0
<b>Total</b>	<b>4,474</b>		<b>5,735</b>		<b>-1,261</b>	<b>5,853</b>		<b>-1379</b>
<b>Race:</b> NOTE: Claimants may choose more than one Race category								
Native American	265	N/A	376	N/A	-111	311	N/A	-46
Asian	92	N/A	105	N/A	-13	118	N/A	-26
African American	90	N/A	133	N/A	-43	121	N/A	-31
Pacific Islander	41	N/A	56	N/A	-15	52	N/A	-11
White	6,082	N/A	6,569	N/A	-487	7,291	N/A	-1209
INA	1,321	N/A	1,587	N/A	-266	1,620	N/A	-299
<b>Ethnicity:</b>								
Hispanic/Latino	484	10.8%	575	10.0%	-91	628	10.7%	-144
Non-Hispanic/Latino	3,343	74.7%	4,272	74.5%	-929	4,278	73.1%	-935
INA	647	14.5%	888	15.5%	-241	947	16.2%	-300
<b>Age:</b>								
<22	77	1.7%	115	2.0%	-38	105	1.8%	-28
22-24	126	2.8%	217	3.8%	-91	230	3.9%	-104
25-34	826	18.5%	1,040	18.1%	-214	1,103	18.8%	-277
35-44	966	21.6%	1,252	21.8%	-286	1,223	20.9%	-257
45-54	1,037	23.2%	1,306	22.8%	-269	1,420	24.3%	-383
55-59	577	12.9%	768	13.4%	-191	748	12.8%	-171
60-64	439	9.8%	577	10.1%	-138	552	9.4%	-113
>=65	424	9.5%	457	8.0%	-33	469	8.0%	-45
<b>Total</b>	<b>4,472</b>		<b>5,732</b>		<b>-1,260</b>	<b>5,850</b>		<b>-1378</b>

**Unemployment Insurance  
Claimant Characteristics  
May 2018**



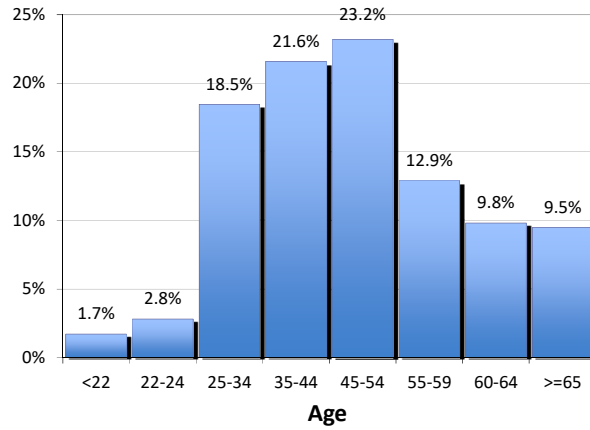
Communications & Research Bureau

**Gender of the Insured Unemployed**

Male	2,435	54.4%
Female	2,038	45.6%
N/A	1	0.02%
<b>Total</b>	<b>4,474</b>	<b>100%</b>

**Age of the Insured Unemployed**

<22	77	1.7%
22-24	126	2.8%
25-34	826	18.5%
35-44	966	21.6%
45-54	1,037	23.2%
55-59	577	12.9%
60-64	439	9.8%
>=65	424	9.5%
INA	2	INA
<b>Total</b>	<b>4,474</b>	<b>100%</b>



**Race of the Insured Unemployed**

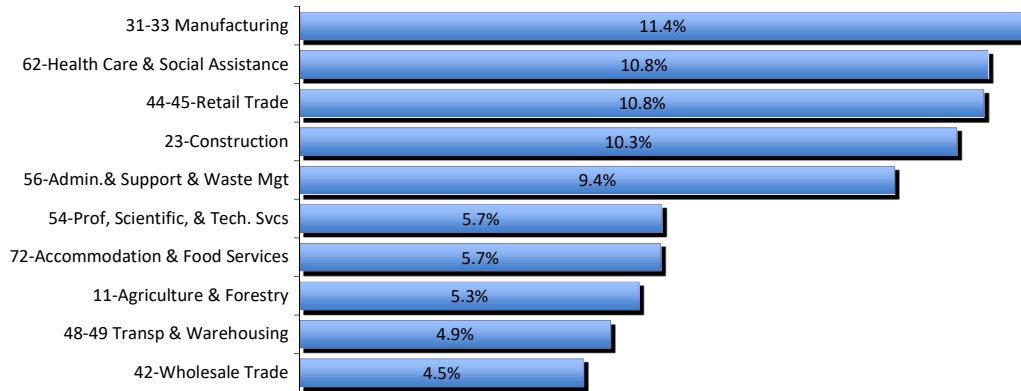
Native Am.	265	3.4%
Asian	92	1.2%
African Am.	90	1.1%
Pacific Islander	41	0.5%
White	6,082	77.1%
INA	1,321	16.7%
<b>* Total</b>	<b>7,891</b>	<b>100%</b>

**Ethnicity of the Insured Unemployed**

Hispanic/Latino	484	10.8%
Non-Hispanic/Latino	3,343	74.7%
INA	647	14.5%
<b>Total</b>	<b>4,474</b>	<b>100.0%</b>

\* Some Claimants choose more than one race category

**What industries did the claimants work in?**



**What occupations did the claimants hold?**

