

# Unemployment Insurance Claimant Characteristics

June 2018



Communications & Research Bureau

Industry	June 2018		May 2018		Monthly Difference	June 2017		Yearly Difference
48-49 Transp & Warehousing	593	13%	219	5%	374	628	12%	-35
62-Health Care & Social Assistance	543	12%	485	11%	58	657	12%	-114
31-33 Manufacturing	514	12%	511	11%	3	528	10%	-14
44-45-Retail Trade	421	10%	482	11%	-61	549	10%	-128
56-Admin. & Support & Waste Mgt	398	9%	419	9%	-21	502	9%	-104
23-Construction	301	7%	463	10%	-162	425	8%	-124
72-Accommodation & Food Services	251	6%	254	6%	-3	331	6%	-80
54-Prof, Scientific, & Tech. Svcs	236	5%	255	6%	-19	290	5%	-54
81-Other Services (ex Public Admin)	160	4%	102	2%	58	183	3%	-23
42-Wholesale Trade	159	4%	200	4%	-41	242	4%	-83
52-Finance & Insurance	134	3%	134	3%	0	172	3%	-38
92-Public Administration	113	3%	96	2%	17	123	2%	-10
11-Agriculture & Forestry	108	2%	239	5%	-131	151	3%	-43
61-Educational Services	90	2%	75	2%	15	130	2%	-40
51-Information	58	1%	74	2%	-16	90	2%	-32
53-Real Estate & Rental & Leasing	51	1%	67	1%	-16	48	1%	3
71-Arts, Entertainment & Recreation	49	1%	89	2%	-40	47	1%	2
21-Mining	20	0%	24	1%	-4	30	1%	-10
55-Mgt of Companies & Enterprises	14	0%	12	0%	2	17	0%	-3
22-Utilities	8	0%	11	0%	-3	8	0%	0
INA*	179	4%	263	6%	-84	229	4%	-50
<b>Total</b>	<b>4,400</b>		<b>4,474</b>		<b>-74</b>	<b>5,380</b>		<b>-980</b>

Occupations	June 2018		May 2018		Monthly Difference	June 2017		Yearly Difference
53-Transp & Mat Moving	687	16%	351	8%	336	679	13%	8
43-Office & Admin Support	513	12%	587	13%	-74	509	9%	4
11-Management	447	10%	454	10%	-7	267	5%	180
41-Sales & related	354	8%	386	9%	-32	593	11%	-239
51-Production	351	8%	369	8%	-18	402	7%	-51
47-Construction & Extraction	295	7%	438	10%	-143	474	9%	-179
35-Food Prep & Related	251	6%	253	6%	-2	379	7%	-128
13-Business Financial	191	4%	169	4%	22	246	5%	-55
25-Ed Training & Library	163	4%	70	2%	93	231	4%	-68
31-Healthcare Support	143	3%	150	3%	-7	261	5%	-118
49-Install, Mainte & Repair	143	3%	176	4%	-33	148	3%	-5
45-Farming, Fishing & Forestry	131	3%	286	6%	-155	183	3%	-52
29-Healthcare Pract & Tech	128	3%	118	3%	10	120	2%	8
21-Community & Social Svcs	112	3%	72	2%	40	106	2%	6
37-Bld & Grd Cleaning & Maint	82	2%	95	2%	-13	126	2%	-44
39-Personal Care & Svcs	73	2%	55	1%	18	110	2%	-37
15-Computer Math	70	2%	97	2%	-27	202	4%	-132
17-Architect & Engineer	50	1%	67	1%	-17	87	2%	-37
27-Art Design, Entert Spt & Media	50	1%	53	1%	-3	54	1%	-4
19-Life Phys Social	28	1%	41	1%	-13	21	0%	7
33-Protective Svcs	28	1%	38	1%	-10	37	1%	-9
23-Legal	20	0%	21	0%	-1	29	1%	-9
55-Military Specific	2	0%	3	0%	-1	7	0%	-5
INA*	88	2%	125	3%	-37	109	2%	-21
<b>Total</b>	<b>4,400</b>		<b>4,474</b>		<b>-74</b>	<b>5,380</b>		<b>-980</b>

\*\* This data reflects UI claims characteristics for the pay period including the 12th of the month.

# Unemployment Insurance Claimant Characteristics

June 2018



Communications & Research Bureau

Demographics	June 2018		May 2018		Monthly Difference	June 2017		Yearly Difference
<b>Gender:</b>								
Male	2,029	46.1%	2,435	54.4%	-406	2,586	48.1%	-557
Female	2,371	53.9%	2,038	45.6%	333	2,793	51.9%	-422
INA	0	0.0%	1	0.0%	-1	1	0.0%	-1
<b>Total</b>	<b>4,400</b>		<b>4,474</b>		<b>-74</b>	<b>5,380</b>		<b>-980</b>
<b>Race:</b> NOTE: Claimants may choose more than one Race category								
Native American	289	N/A	265	N/A	24	288	N/A	1
Asian	79	N/A	92	N/A	-13	130	N/A	-51
African American	84	N/A	90	N/A	-6	113	N/A	-29
Pacific Islander	49	N/A	41	N/A	8	66	N/A	-17
White	5,644	N/A	6,082	N/A	-438	6,569	N/A	-925
INA	1,337	N/A	1,321	N/A	16	1,478	N/A	-141
<b>Ethnicity:</b>								
Hispanic/Latino	486	11.0%	484	10.8%	2	562	10.4%	-76
Non-Hispanic/Latino	3,308	75.2%	3,343	74.7%	-35	4,009	74.5%	-701
INA	606	13.8%	647	14.5%	-41	809	15.0%	-203
<b>Age:</b>								
<22	59	1.3%	77	1.7%	-18	102	1.9%	-43
22-24	127	2.9%	126	2.8%	1	182	3.4%	-55
25-34	818	18.6%	826	18.5%	-8	952	17.7%	-134
35-44	866	19.7%	966	21.6%	-100	1,095	20.4%	-229
45-54	980	22.3%	1,037	23.2%	-57	1,243	23.1%	-263
55-59	631	14.3%	577	12.9%	54	718	13.3%	-87
60-64	451	10.3%	439	9.8%	12	542	10.1%	-91
>=65	468	10.6%	424	9.5%	44	544	10.1%	-76
<b>Total</b>	<b>4,400</b>		<b>4,472</b>		<b>-72</b>	<b>5,378</b>		<b>-978</b>

**Unemployment Insurance  
Claimant Characteristics  
June 2018**



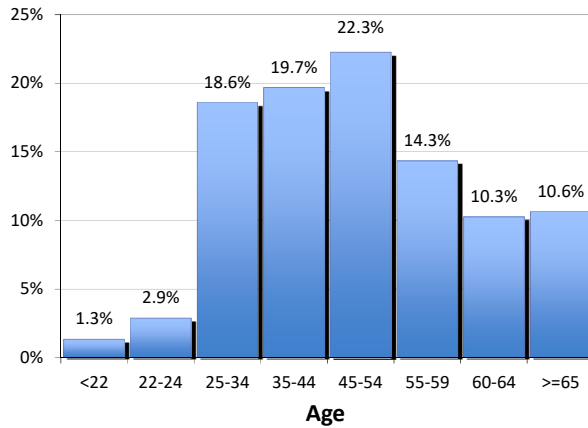
Communications & Research Bureau

**Gender of the Insured Unemployed**

Male	2,029	46.1%
Female	2,371	53.9%
N/A	0	0.00%
<b>Total</b>	<b>4,400</b>	<b>100%</b>

**Age of the Insured Unemployed**

<22	59	1.3%
22-24	127	2.9%
25-34	818	18.6%
35-44	866	19.7%
45-54	980	22.3%
55-59	631	14.3%
60-64	451	10.3%
>=65	468	10.6%
INA	0	INA
<b>Total</b>	<b>4,400</b>	<b>100%</b>



**Race of the Insured Unemployed**

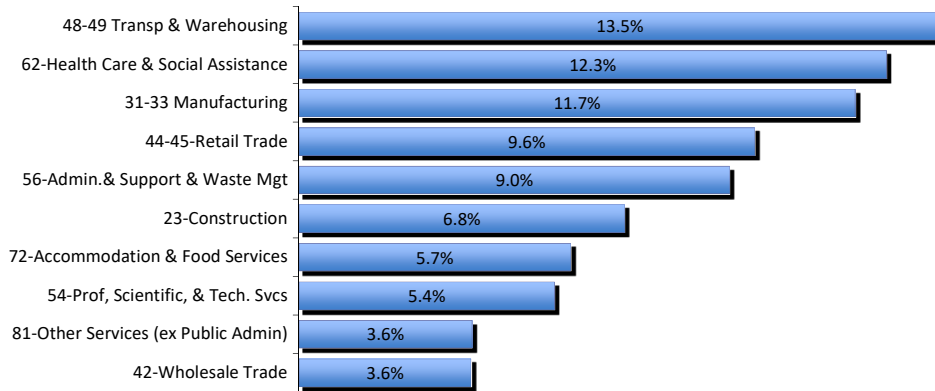
Native Am.	289	3.9%
Asian	79	1.1%
African Am.	84	1.1%
Pacific Islander	49	0.7%
White	5,644	75.4%
INA	1,337	17.9%
<b>* Total</b>	<b>7,482</b>	<b>100%</b>

**Ethnicity of the Insured Unemployed**

Hispanic/Latino	486	11.0%
Non-Hispanic/Latino	3,308	75.2%
INA	606	13.8%
<b>Total</b>	<b>4,400</b>	<b>100.0%</b>

\* Some Claimants choose more than one race category

**What industries did the claimants work in?**



**What occupations did the claimants hold?**

