

# Unemployment Insurance Claimant Characteristics

September 2018



Communications & Research Bureau

Industry	September 2018		August 2018		Monthly Difference	September 2017		Yearly Difference
31-33 Manufacturing	453	14%	518	13%	-65	443	12%	10
62-Health Care & Social Assistance	372	11%	450	11%	-78	489	13%	-117
44-45-Retail Trade	357	11%	379	9%	-22	444	12%	-87
56-Admin.& Support & Waste Mgt	352	11%	331	8%	21	359	9%	-7
23-Construction	259	8%	255	6%	4	315	8%	-56
54-Prof, Scientific, & Tech. Svcs	256	8%	250	6%	6	273	7%	-17
42-Wholesale Trade	190	6%	204	5%	-14	241	6%	-51
72-Accommodation & Food Services	175	5%	190	5%	-15	193	5%	-18
52-Finance & Insurance	122	4%	144	4%	-22	149	4%	-27
48-49 Transp & Warehousing	106	3%	540	13%	-434	109	3%	-3
61-Educational Services	86	3%	123	3%	-37	112	3%	-26
92-Public Administration	80	2%	99	2%	-19	115	3%	-35
81-Other Services (ex Public Admin)	64	2%	93	2%	-29	95	2%	-31
51-Information	57	2%	56	1%	1	80	2%	-23
11-Agriculture & Forestry	46	1%	75	2%	-29	60	2%	-14
71-Arts, Entertainment & Recreation	38	1%	40	1%	-2	47	1%	-9
53-Real Estate & Rental & Leasing	36	1%	45	1%	-9	39	1%	-3
55-Mgt of Companies & Enterprises	16	0%	19	0%	-3	15	0%	1
21-Mining	15	0%	15	0%	0	21	1%	-6
22-Utilities	11	0%	12	0%	-1	3	0%	8
INA*	191	6%	226	6%	-35	206	5%	-15
<b>Total</b>	<b>3,282</b>		<b>4,064</b>		<b>-782</b>	<b>3,808</b>		<b>-526</b>

Occupations	September 2018		August 2018		Monthly Difference	September 2017		Yearly Difference
43-Office & Admin Support	565	17%	527	13%	38	374	10%	191
11-Management	376	11%	446	11%	-70	243	6%	133
41-Sales & related	323	10%	341	8%	-18	517	14%	-194
51-Production	292	9%	377	9%	-85	348	9%	-56
47-Construction & Extraction	248	8%	248	6%	0	339	9%	-91
13-Business Financial	171	5%	180	4%	-9	205	5%	-34
53-Transp & Mat Moving	162	5%	587	14%	-425	173	5%	-11
35-Food Prep & Related	153	5%	192	5%	-39	227	6%	-74
49-Install, Mainte & Repair	121	4%	103	3%	18	141	4%	-20
31-Healthcare Support	116	4%	124	3%	-8	210	6%	-94
29-Healthcare Pract & Tech	97	3%	105	3%	-8	108	3%	-11
45-Farming, Fishing & Forestry	97	3%	125	3%	-28	103	3%	-6
21-Community & Social Svcs	69	2%	85	2%	-16	75	2%	-6
15-Computer Math	66	2%	77	2%	-11	185	5%	-119
17-Architect & Engineer	59	2%	54	1%	5	58	2%	1
25-Ed Training & Library	56	2%	110	3%	-54	82	2%	-26
37-Bld & Grd Cleaning & Maint	50	2%	64	2%	-14	66	2%	-16
27-Art Design, Entert Spt & Media	48	1%	59	1%	-11	60	2%	-12
39-Personal Care & Svcs	46	1%	65	2%	-19	81	2%	-35
19-Life Phys Social	23	1%	28	1%	-5	23	1%	0
23-Legal	19	1%	21	1%	-2	27	1%	-8
33-Protective Svcs	18	1%	15	0%	3	43	1%	-25
55-Military Specific	2	0%	5	0%	-3	1	0%	1
INA*	105	3%	126	3%	-21	119	3%	-14
<b>Total</b>	<b>3,282</b>		<b>4,064</b>		<b>-782</b>	<b>3,808</b>		<b>-526</b>

\*\* This data reflects UI claims characteristics for the pay period including the 12th of the month.

# Unemployment Insurance Claimant Characteristics September 2018

Demographics	September 2018		August 2018		Monthly Difference	September 2017		Yearly Difference
<b>Gender:</b>								
Male	1,605	48.9%	1,903	46.8%	-298	1,933	50.8%	-328
Female	1,676	51.1%	2,160	53.1%	-484	1,874	49.2%	-198
INA	1	0.0%	1	0.0%	0	1	0.0%	0
<b>Total</b>	<b>3,282</b>		<b>4,064</b>		<b>-782</b>	<b>3,808</b>		<b>-526</b>
<b>Race:</b> NOTE: Claimants may choose more than one Race category								
Native American	186	N/A	269	N/A	-83	213	N/A	-27
Asian	69	N/A	70	N/A	-1	108	N/A	-39
African American	63	N/A	69	N/A	-6	95	N/A	-32
Pacific Islander	46	N/A	84	N/A	-38	51	N/A	-5
White	3,823	N/A	4,922	N/A	-1,099	4,545	N/A	-722
INA	829	N/A	1,275	N/A	-446	1,029	N/A	-200
<b>Ethnicity:</b>								
Hispanic/Latino	339	10.3%	420	10.3%	-81	415	10.9%	-76
Non-Hispanic/Latino	2,466	75.1%	2,999	73.8%	-533	2,839	74.6%	-373
INA	477	14.5%	645	15.9%	-168	554	14.5%	-77
<b>Age:</b>								
<22	48	1.5%	43	1.1%	5	49	1.3%	-1
22-24	99	3.0%	110	2.7%	-11	130	3.4%	-31
25-34	573	17.5%	651	16.0%	-78	722	19.0%	-149
35-44	734	22.4%	821	20.2%	-87	876	23.0%	-142
45-54	824	25.1%	946	23.3%	-122	895	23.5%	-71
55-59	439	13.4%	588	14.5%	-149	491	12.9%	-52
60-64	288	8.8%	419	10.3%	-131	363	9.5%	-75
>=65	277	8.4%	486	12.0%	-209	280	7.4%	-3
<b>Total</b>	<b>3,282</b>		<b>4,064</b>		<b>-782</b>	<b>3,806</b>		<b>-524</b>

**Unemployment Insurance  
Claimant Characteristics  
September 2018**



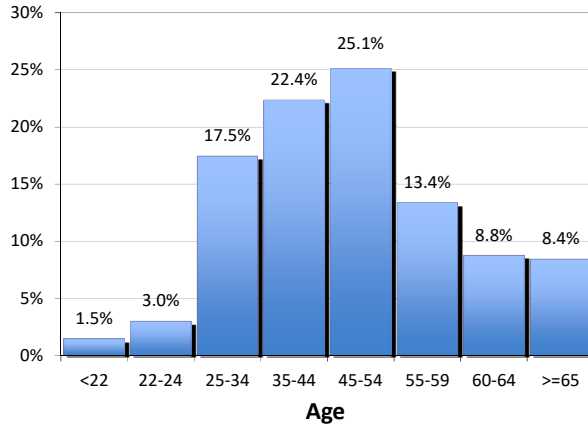
Communications & Research Bureau

**Gender of the Insured Unemployed**

Male	1,605	48.9%
Female	1,676	51.1%
N/A	1	0.03%
<b>Total</b>	<b>3,282</b>	<b>100%</b>

**Age of the Insured Unemployed**

<22	48	1.5%
22-24	99	3.0%
25-34	573	17.5%
35-44	734	22.4%
45-54	824	25.1%
55-59	439	13.4%
60-64	288	8.8%
>=65	277	8.4%
INA	0	INA
<b>Total</b>	<b>3,282</b>	<b>100%</b>



**Race of the Insured Unemployed**

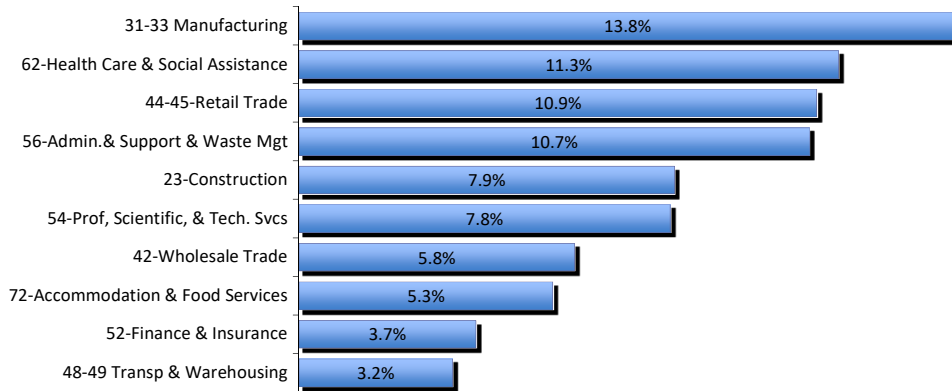
Native Am.	186	3.7%
Asian	69	1.4%
African Am.	63	1.3%
Pacific Islander	46	0.9%
White	3,823	76.2%
INA	829	16.5%
<b>* Total</b>	<b>5,016</b>	<b>100%</b>

**Ethnicity of the Insured Unemployed**

Hispanic/Latino	339	10.3%
Non-Hispanic/Latino	2,466	75.1%
INA	477	14.5%
<b>Total</b>	<b>3,282</b>	<b>100.0%</b>

\* Some Claimants choose more than one race category

**What industries did the claimants work in?**



**What occupations did the claimants hold?**

