

Unemployment Insurance Claimant Characteristics

November 2018



Communications & Research Bureau

Industry	November 2018		October 2018		Monthly Difference	November 2017		Yearly Difference
56-Admin. & Support & Waste Mgt	604	13%	403	11%	201	656	11%	-52
31-33 Manufacturing	543	11%	470	13%	73	636	11%	-93
23-Construction	526	11%	332	9%	194	753	13%	-227
44-45-Retail Trade	479	10%	424	11%	55	544	9%	-65
62-Health Care & Social Assistance	392	8%	378	10%	14	563	10%	-171
72-Accommodation & Food Services	299	6%	210	6%	89	393	7%	-94
54-Prof, Scientific, & Tech. Svcs	240	5%	246	7%	-6	249	4%	-9
11-Agriculture & Forestry	236	5%	85	2%	151	319	5%	-83
42-Wholesale Trade	206	4%	192	5%	14	245	4%	-39
92-Public Administration	184	4%	104	3%	80	198	3%	-14
48-49 Transp & Warehousing	140	3%	105	3%	35	189	3%	-49
71-Arts, Entertainment & Recreation	135	3%	69	2%	66	190	3%	-55
52-Finance & Insurance	128	3%	134	4%	-6	172	3%	-44
61-Educational Services	102	2%	101	3%	1	122	2%	-20
81-Other Services (ex Public Admin)	91	2%	76	2%	15	120	2%	-29
51-Information	72	2%	63	2%	9	94	2%	-22
53-Real Estate & Rental & Leasing	68	1%	46	1%	22	62	1%	6
21-Mining	40	1%	22	1%	18	52	1%	-12
22-Utilities	10	0%	6	0%	4	19	0%	-9
55-Mgt of Companies & Enterprises	8	0%	14	0%	-6	13	0%	-5
INA*	235	5%	240	6%	-5	256	4%	-21
Total	4,738		3,720		1,018	5,845		-1,107

Occupations	November 2018		October 2018		Monthly Difference	November 2017		Yearly Difference
43-Office & Admin Support	604	13%	598	16%	6	500	9%	104
47-Construction & Extraction	513	11%	318	9%	195	805	14%	-292
11-Management	457	10%	443	12%	14	402	7%	55
41-Sales & related	390	8%	358	10%	32	508	9%	-118
51-Production	369	8%	311	8%	58	439	8%	-70
53-Transp & Mat Moving	367	8%	219	6%	148	452	8%	-85
45-Farming, Fishing & Forestry	287	6%	113	3%	174	430	7%	-143
35-Food Prep & Related	247	5%	186	5%	61	348	6%	-101
37-Bld & Grd Cleaning & Maint	226	5%	68	2%	158	321	5%	-95
49-Install, Mainte & Repair	203	4%	147	4%	56	250	4%	-47
13-Business Financial	153	3%	170	5%	-17	207	4%	-54
31-Healthcare Support	125	3%	110	3%	15	202	3%	-77
29-Healthcare Pract & Tech	104	2%	102	3%	2	122	2%	-18
15-Computer Math	97	2%	99	3%	-2	148	3%	-51
33-Protective Svcs	77	2%	37	1%	40	66	1%	11
17-Architect & Engineer	76	2%	70	2%	6	91	2%	-15
27-Art Design, Entert Spt & Media	69	1%	47	1%	22	72	1%	-3
39-Personal Care & Svcs	69	1%	49	1%	20	98	2%	-29
25-Ed Training & Library	66	1%	61	2%	5	110	2%	-44
21-Community & Social Svcs	59	1%	61	2%	-2	89	2%	-30
19-Life Phys Social	38	1%	29	1%	9	36	1%	2
23-Legal	18	0%	16	0%	2	27	0%	-9
55-Military Specific	7	0%	4	0%	3	2	0%	5
INA*	117	2%	104	3%	13	120	2%	-3
Total	4,738		3,720		1,018	5,845		-1,107

** This data reflects UI claims characteristics for the pay period including the 12th of the month.

Unemployment Insurance Claimant Characteristics

November 2018



Communications & Research Bureau

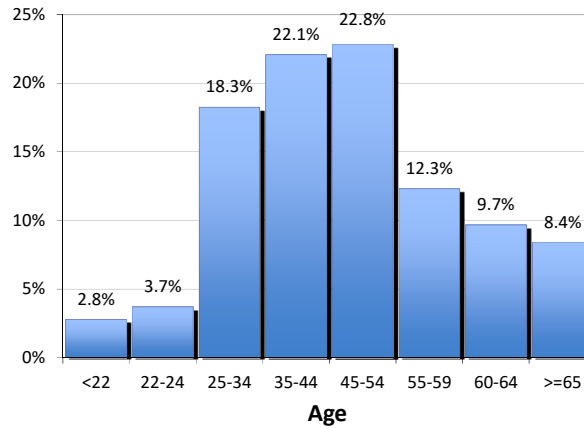
Demographics	November 2018		October 2018		Monthly Difference	November 2017		Yearly Difference
Gender:								
Male	2,740	57.8%	1,928	51.8%	812	3,479	59.5%	-739
Female	1,998	42.2%	1,791	48.1%	207	2,364	40.4%	-366
INA	0	0.0%	1	0.0%	-1	2	0.0%	-2
Total	4,738		3,720		1,018	5,845		-1107
Race: NOTE: Claimants may choose more than one Race category								
Native American	290	N/A	192	N/A	98	359	N/A	-69
Asian	69	N/A	61	N/A	8	109	N/A	-40
African American	101	N/A	91	N/A	10	132	N/A	-31
Pacific Islander	72	N/A	44	N/A	28	57	N/A	15
White	5,182	N/A	4,999	N/A	183	7,805	N/A	-2623
INA	1,676	N/A	936	N/A	740	1,955	N/A	-279
Ethnicity:								
Hispanic/Latino	627	13.2%	386	10.4%	241	735	12.6%	-108
Non-Hispanic/Latino	3,466	73.2%	2,808	75.5%	658	4,210	72.0%	-744
INA	645	13.6%	526	14.1%	119	900	15.4%	-255
Age:								
<22	132	2.8%	66	1.8%	66	141	2.4%	-9
22-24	175	3.7%	113	3.0%	62	228	3.9%	-53
25-34	865	18.3%	665	17.9%	200	1,185	20.3%	-320
35-44	1,046	22.1%	800	21.5%	246	1,259	21.5%	-213
45-54	1,081	22.8%	912	24.5%	169	1,301	22.3%	-220
55-59	583	12.3%	466	12.5%	117	694	11.9%	-111
60-64	458	9.7%	330	8.9%	128	563	9.6%	-105
>=65	398	8.4%	368	9.9%	30	469	8.0%	-71
Total	4,738		3,720		1,018	5,840		-1102

Gender of the Insured Unemployed

Male	2,740	57.8%
Female	1,998	42.2%
N/A	0	0.00%
Total	4,738	100%

Age of the Insured Unemployed

<22	132	2.8%
22-24	175	3.7%
25-34	865	18.3%
35-44	1,046	22.1%
45-54	1,081	22.8%
55-59	583	12.3%
60-64	458	9.7%
>=65	398	8.4%
INA	0	INA
Total	4,738	100%



Race of the Insured Unemployed

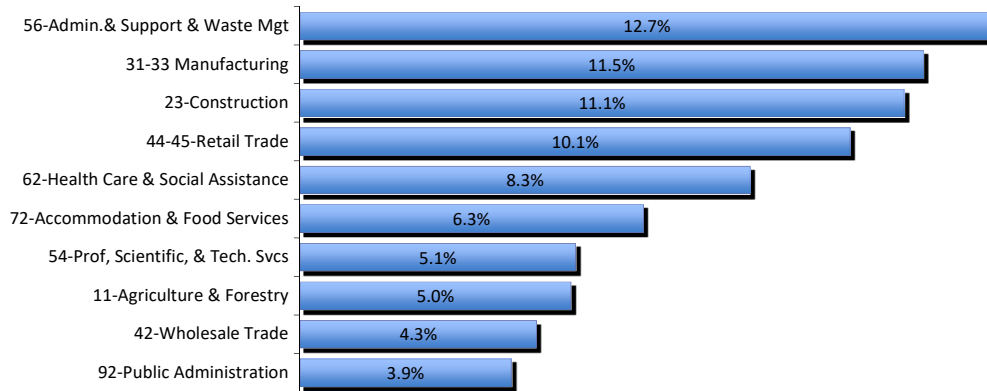
Native Am.	290	3.9%
Asian	69	0.9%
African Am.	101	1.4%
Pacific Islander	72	1.0%
White	5,182	70.1%
INA	1,676	22.7%
* Total	7,390	100%

Ethnicity of the Insured Unemployed

Hispanic/Latino	627	13.2%
Non-Hispanic/Latino	3,466	73.2%
INA	645	13.6%
Total	4,738	100.0%

* Some Claimants choose more than one race category

What industries did the claimants work in?



What occupations did the claimants hold?

