

Unemployment Insurance Claimant Characteristics

December 2018



Communications & Research Bureau

Industry	December 2018		November 2018		Monthly Difference	December 2017		Yearly Difference
23-Construction	1,575	22%	526	11%	1,049	1,710	19%	-135
56-Admin. & Support & Waste Mgt	1,238	18%	604	13%	634	1,317	15%	-79
31-33 Manufacturing	650	9%	543	11%	107	777	9%	-127
44-45-Retail Trade	527	7%	479	10%	48	777	9%	-250
11-Agriculture & Forestry	514	7%	236	5%	278	591	7%	-77
62-Health Care & Social Assistance	348	5%	392	8%	-44	665	8%	-317
72-Accommodation & Food Services	272	4%	299	6%	-27	448	5%	-176
42-Wholesale Trade	234	3%	206	4%	28	328	4%	-94
54-Prof, Scientific, & Tech. Svcs	234	3%	240	5%	-6	299	3%	-65
92-Public Administration	223	3%	184	4%	39	280	3%	-57
48-49 Transp & Warehousing	198	3%	140	3%	58	235	3%	-37
71-Arts, Entertainment & Recreation	183	3%	135	3%	48	271	3%	-88
52-Finance & Insurance	108	2%	128	3%	-20	165	2%	-57
21-Mining	100	1%	40	1%	60	133	2%	-33
81-Other Services (ex Public Admin)	93	1%	91	2%	2	161	2%	-68
53-Real Estate & Rental & Leasing	76	1%	68	1%	8	100	1%	-24
61-Educational Services	73	1%	102	2%	-29	117	1%	-44
51-Information	52	1%	72	2%	-20	96	1%	-44
22-Utilities	19	0%	10	0%	9	26	0%	-7
55-Mgt of Companies & Enterprises	5	0%	8	0%	-3	17	0%	-12
INA*	328	5%	235	5%	93	331	4%	-3
Total	7,050		4,738		2,312	8,844		-1,794

Occupations	December 2018		November 2018		Monthly Difference	December 2017		Yearly Difference
47-Construction & Extraction	1,491	21%	513	11%	978	1,730	20%	-239
37-Bld & Grd Cleaning & Maint	834	12%	226	5%	608	876	10%	-42
53-Transp & Mat Moving	752	11%	367	8%	385	793	9%	-41
45-Farming, Fishing & Forestry	645	9%	287	6%	358	778	9%	-133
43-Office & Admin Support	535	8%	604	13%	-69	602	7%	-67
11-Management	461	7%	457	10%	4	549	6%	-88
51-Production	410	6%	369	8%	41	555	6%	-145
41-Sales & related	378	5%	390	8%	-12	590	7%	-212
49-Install, Mainte & Repair	288	4%	203	4%	85	405	5%	-117
35-Food Prep & Related	226	3%	247	5%	-21	416	5%	-190
13-Business Financial	151	2%	153	3%	-2	204	2%	-53
17-Architect & Engineer	102	1%	76	2%	26	120	1%	-18
31-Healthcare Support	90	1%	125	3%	-35	211	2%	-121
29-Healthcare Pract & Tech	81	1%	104	2%	-23	133	2%	-52
15-Computer Math	75	1%	97	2%	-22	153	2%	-78
25-Ed Training & Library	66	1%	66	1%	0	127	1%	-61
33-Protective Svcs	61	1%	77	2%	-16	75	1%	-14
21-Community & Social Svcs	60	1%	59	1%	1	89	1%	-29
27-Art Design, Entert Spt & Media	60	1%	69	1%	-9	90	1%	-30
39-Personal Care & Svcs	57	1%	69	1%	-12	107	1%	-50
19-Life Phys Social	56	1%	38	1%	18	52	1%	4
23-Legal	23	0%	18	0%	5	29	0%	-6
55-Military Specific	5	0%	7	0%	-2	2	0%	3
INA*	143	2%	117	2%	26	158	2%	-15
Total	7,050		4,738		2,312	8,844		-1,794

** This data reflects UI claims characteristics for the pay period including the 12th of the month.

Unemployment Insurance Claimant Characteristics

December 2018



Communications & Research Bureau

Demographics	December 2018		November 2018		Monthly Difference	December 2017		Yearly Difference
Gender:								
Male	5,052	71.7%	2,740	57.8%	2,312	6,041	68.3%	-989
Female	1,997	28.3%	1,998	42.2%	-1	2,798	31.6%	-801
INA	1	0.0%	0	0.0%	1	5	0.1%	-4
Total	7,050		4,738		2,312	8,844		-1794
Race: NOTE: Claimants may choose more than one Race category								
Native American	585	N/A	290	N/A	295	584	N/A	1
Asian	85	N/A	69	N/A	16	137	N/A	-52
African American	135	N/A	101	N/A	34	170	N/A	-35
Pacific Islander	119	N/A	72	N/A	47	76	N/A	43
White	6,805	N/A	5,182	N/A	1,623	7,291	N/A	-486
INA	4,316	N/A	1,676	N/A	2,640	3,758	N/A	558
Ethnicity:								
Hispanic/Latino	1,338	19.0%	627	13.2%	711	1,466	16.6%	-128
Non-Hispanic/Latino	4,667	66.2%	3,466	73.2%	1,201	6,041	68.3%	-1374
INA	1,045	14.8%	645	13.6%	400	1,337	15.1%	-292
Age:								
<22	120	1.7%	132	2.8%	-12	284	3.2%	-164
22-24	253	3.6%	175	3.7%	78	454	5.1%	-201
25-34	1,479	21.0%	865	18.3%	614	1,931	21.8%	-452
35-44	1,546	21.9%	1,046	22.1%	500	1,862	21.1%	-316
45-54	1,567	22.2%	1,081	22.8%	486	1,887	21.3%	-320
55-59	835	11.8%	583	12.3%	252	1,002	11.3%	-167
60-64	634	9.0%	458	9.7%	176	745	8.4%	-111
>=65	613	8.7%	398	8.4%	215	675	7.6%	-62
Total	7,047		4,738		2,309	8,840		-1793

**Unemployment Insurance
Claimant Characteristics
December 2018**



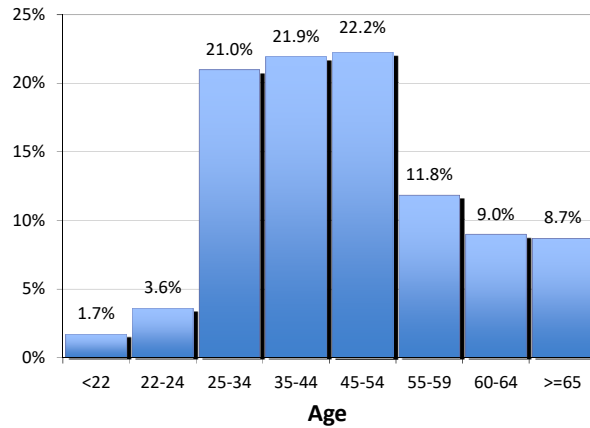
Communications & Research Bureau

Gender of the Insured Unemployed

Male	5,052	71.7%
Female	1,997	28.3%
N/A	1	0.01%
Total	7,050	100%

Age of the Insured Unemployed

<22	120	1.7%
22-24	253	3.6%
25-34	1,479	21.0%
35-44	1,546	21.9%
45-54	1,567	22.2%
55-59	835	11.8%
60-64	634	9.0%
>=65	613	8.7%
INA	3	INA
Total	7,050	100%



Race of the Insured Unemployed

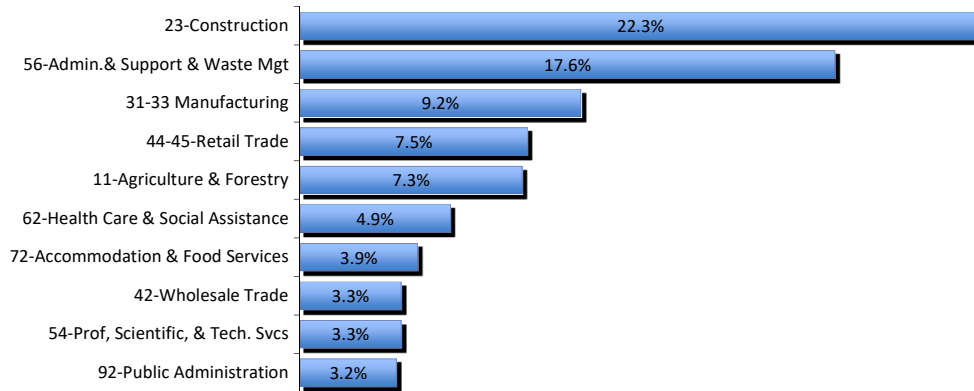
Native Am.	585	4.9%
Asian	85	0.7%
African Am.	135	1.1%
Pacific Islander	119	1.0%
White	6,805	56.5%
INA	4,316	35.8%
* Total	12,045	100%

Ethnicity of the Insured Unemployed

Hispanic/Latino	1,338	19.0%
Non-Hispanic/Latino	4,667	66.2%
INA	1,045	14.8%
Total	7,050	100.0%

* Some Claimants choose more than one race category

What industries did the claimants work in?



What occupations did the claimants hold?

