

Unemployment Insurance Claimant Characteristics

January 2019



Communications & Research Bureau

Industry	January 2019	December 2018	Monthly Difference	January 2018	Yearly Difference
23-Construction	2,620 25%	1,575 22%	1,045	3,000 25%	-380
56-Admin. & Support & Waste Mgt	1,768 17%	1,238 18%	530	1,792 15%	-24
31-33 Manufacturing	1,013 10%	650 9%	363	1,057 9%	-44
44-45-Retail Trade	906 9%	527 7%	379	959 8%	-53
11-Agriculture & Forestry	732 7%	514 7%	218	885 7%	-153
62-Health Care & Social Assistance	512 5%	348 5%	164	674 6%	-162
72-Accommodation & Food Services	443 4%	272 4%	171	512 4%	-69
54-Prof, Scientific, & Tech. Svcs	374 4%	234 3%	140	428 4%	-54
42-Wholesale Trade	344 3%	234 3%	110	429 4%	-85
92-Public Administration	322 3%	223 3%	99	345 3%	-23
48-49 Transp & Warehousing	309 3%	198 3%	111	367 3%	-58
71-Arts, Entertainment & Recreation	251 2%	183 3%	68	317 3%	-66
81-Other Services (ex Public Admin)	179 2%	93 1%	86	217 2%	-38
52-Finance & Insurance	163 2%	108 2%	55	173 1%	-10
21-Mining	112 1%	100 1%	12	150 1%	-38
53-Real Estate & Rental & Leasing	106 1%	76 1%	30	102 1%	4
61-Educational Services	99 1%	73 1%	26	99 1%	0
51-Information	76 1%	52 1%	24	108 1%	-32
22-Utilities	55 1%	19 0%	36	60 0%	-5
55-Mgt of Companies & Enterprises	7 0%	5 0%	2	14 0%	-7
INA*	3 0%	328 5%	-325	453 4%	-450
Total	10,394	7,050	3,344	12,141	-1,747

Occupations	January 2019	December 2018	Monthly Difference	January 2018	Yearly Difference
47-Construction & Extraction	2,381 23%	1,491 21%	890	2,971 24%	-590
37-Bld & Grd Cleaning & Maint	1,191 11%	834 12%	357	1,224 10%	-33
53-Transp & Mat Moving	1,137 11%	752 11%	385	1,255 10%	-118
45-Farming, Fishing & Forestry	909 9%	645 9%	264	1,116 9%	-207
43-Office & Admin Support	826 8%	535 8%	291	792 7%	34
11-Management	692 7%	461 7%	231	703 6%	-11
51-Production	591 6%	410 6%	181	663 5%	-72
41-Sales & related	552 5%	378 5%	174	676 6%	-124
49-Install, Mainte & Repair	497 5%	288 4%	209	592 5%	-95
35-Food Prep & Related	370 4%	226 3%	144	456 4%	-86
13-Business Financial	189 2%	151 2%	38	219 2%	-30
17-Architect & Engineer	185 2%	102 1%	83	153 1%	32
31-Healthcare Support	144 1%	90 1%	54	220 2%	-76
15-Computer Math	129 1%	75 1%	54	155 1%	-26
33-Protective Svcs	96 1%	61 1%	35	98 1%	-2
29-Healthcare Pract & Tech	95 1%	81 1%	14	139 1%	-44
25-Ed Training & Library	94 1%	66 1%	28	114 1%	-20
27-Art Design, Entert Spt & Media	78 1%	60 1%	18	93 1%	-15
19-Life Phys Social	76 1%	56 1%	20	87 1%	-11
39-Personal Care & Svcs	73 1%	57 1%	16	121 1%	-48
21-Community & Social Svcs	57 1%	60 1%	-3	102 1%	-45
23-Legal	19 0%	23 0%	-4	34 0%	-15
55-Military Specific	7 0%	5 0%	2	9 0%	-2
INA*	6 0%	143 2%	-137	149 1%	-143
Total	10,394	7,050	3,344	12,141	-1,747

** This data reflects UI claims characteristics for the pay period including the 12th of the month.

Unemployment Insurance Claimant Characteristics

January 2019



Communications & Research Bureau

Demographics	January 2019		December 2018		Monthly Difference	January 2018		Yearly Difference
Gender:								
Male	7,631	73.4%	5,052	71.7%	2,579	8,921	73.5%	-1290
Female	2,763	26.6%	1,997	28.3%	766	3,213	26.5%	-450
INA	0	0.0%	1	0.0%	-1	7	0.1%	-7
Total	10,394		7,050		3,344	12,141		-1747
Race: NOTE: Claimants may choose more than one Race category								
Native American	805	N/A	585	N/A	220	803	N/A	2
Asian	143	N/A	85	N/A	58	153	N/A	-10
African American	181	N/A	135	N/A	46	256	N/A	-75
Pacific Islander	106	N/A	119	N/A	-13	144	N/A	-38
White	11,087	N/A	6,805	N/A	4,282	13,173	N/A	-2086
INA	5,811	N/A	4,316	N/A	1,495	5,785	N/A	26
Ethnicity:								
Hispanic/Latino	1,903	18.3%	1,338	19.0%	565	2,111	17.4%	-208
Non-Hispanic/Latino	7,154	68.8%	4,667	66.2%	2,487	8,176	67.3%	-1022
INA	1,337	12.9%	1,045	14.8%	292	1,854	15.3%	-517
Age:								
<22	430	4.1%	120	1.7%	310	403	3.3%	27
22-24	570	5.5%	253	3.6%	317	618	5.1%	-48
25-34	2,337	22.5%	1,479	21.0%	858	2,615	21.5%	-278
35-44	2,276	21.9%	1,546	21.9%	730	2,585	21.3%	-309
45-54	2,172	20.9%	1,567	22.2%	605	2,550	21.0%	-378
55-59	1,142	11.0%	835	11.8%	307	1,394	11.5%	-252
60-64	878	8.4%	634	9.0%	244	985	8.1%	-107
>=65	588	5.7%	613	8.7%	-25	989	8.1%	-401
Total	10,393		7,047		3,346	12,139		-1746

**Unemployment Insurance
Claimant Characteristics
January 2019**



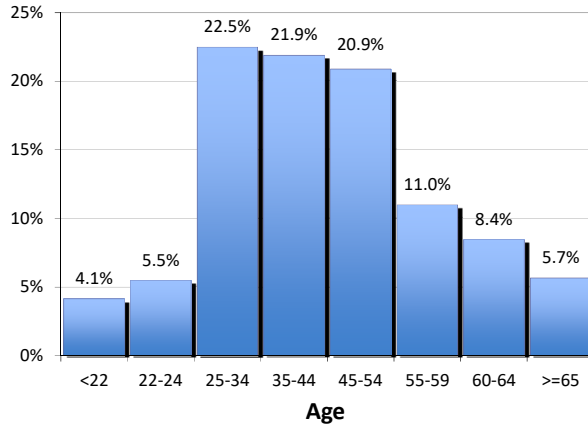
Communications & Research Bureau

Gender of the Insured Unemployed

Male	7,631	73.4%
Female	2,763	26.6%
N/A	0	0.00%
Total	10,394	100%

Age of the Insured Unemployed

<22	430	4.1%
22-24	570	5.5%
25-34	2,337	22.5%
35-44	2,276	21.9%
45-54	2,172	20.9%
55-59	1,142	11.0%
60-64	878	8.4%
>=65	588	5.7%
INA	1	INA
Total	10,394	100%



Race of the Insured Unemployed

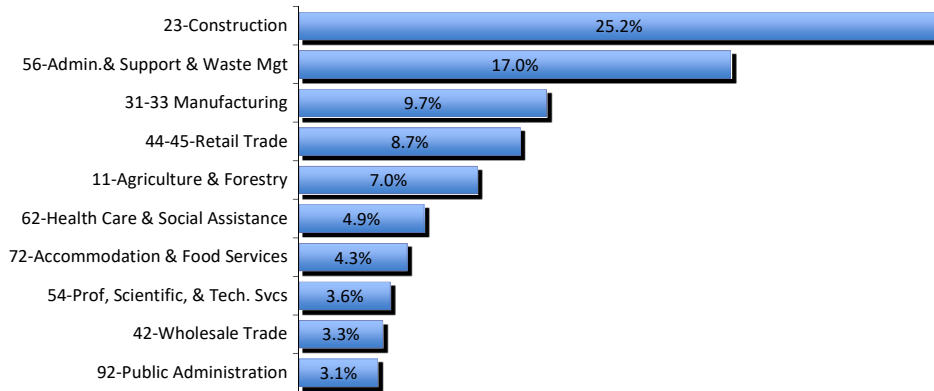
Native Am.	805	4.4%
Asian	143	0.8%
African Am.	181	1.0%
Pacific Islander	106	0.6%
White	11,087	61.1%
INA	5,811	32.0%
* Total	18,133	100%

Ethnicity of the Insured Unemployed

Hispanic/Latino	1,903	18.3%
Non-Hispanic/Latino	7,154	68.8%
INA	1,337	12.9%
Total	10,394	100.0%

* Some Claimants choose more than one race category

What industries did the claimants work in?



What occupations did the claimants hold?

