

**Unemployment Insurance  
Claimant Characteristics  
December 2019**



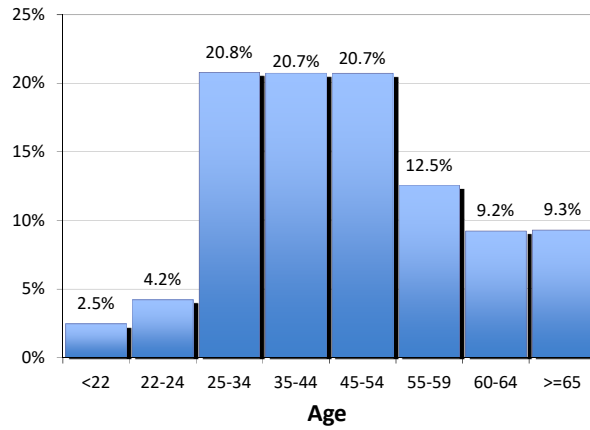
Communications & Research Bureau

**Gender of the Insured Unemployed**

Male	5,031	70.1%
Female	2,148	29.9%
N/A	2	0.03%
<b>Total</b>	<b>7,181</b>	<b>100%</b>

**Age of the Insured Unemployed**

<22	177	2.5%
22-24	302	4.2%
25-34	1,493	20.8%
35-44	1,489	20.7%
45-54	1,488	20.7%
55-59	901	12.5%
60-64	663	9.2%
>=65	668	9.3%
INA	0	INA
<b>Total</b>	<b>7,181</b>	<b>100%</b>



**Race of the Insured Unemployed**

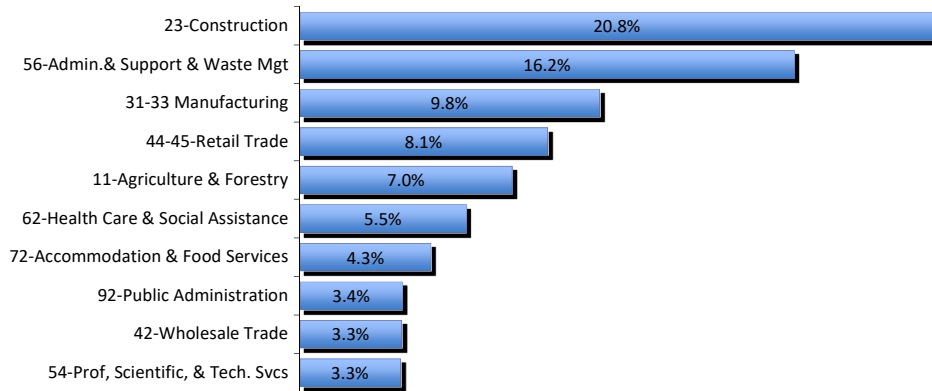
Native Am.	547	5.0%
Asian	113	1.0%
African Am.	181	1.7%
Pacific Islander	82	0.7%
White	5,656	51.7%
INA	4,367	39.9%
<b>* Total</b>	<b>10,946</b>	<b>100%</b>

**Ethnicity of the Insured Unemployed**

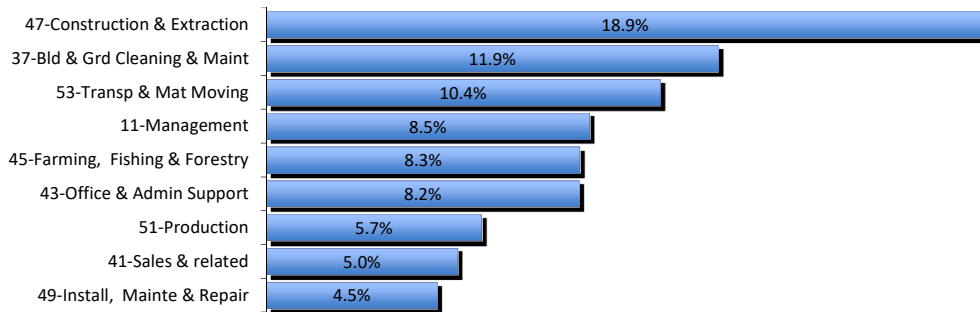
Hispanic/Latino	1,284	17.9%
Non-Hispanic/Latino	4,856	67.6%
INA	1,041	14.5%
<b>Total</b>	<b>7,181</b>	<b>100.0%</b>

\* Some Claimants choose more than one race category

**What industries did the claimants work in?**



**What occupations did the claimants hold?**



# Unemployment Insurance Claimant Characteristics

December 2019



Communications & Research Bureau

Demographics	December 2019		November 2019		Monthly Difference	December 2018		Yearly Difference
<b>Gender:</b>								
Male	5,031	70.1%	2,649	58.9%	2,382	5,052	71.7%	-21
Female	2,148	29.9%	1,849	41.1%	299	1,997	28.3%	151
INA	2	0.0%	2	0.0%	0	1	0.0%	1
<b>Total</b>	<b>7,181</b>		<b>4,500</b>		<b>2,681</b>	<b>7,050</b>		<b>131</b>
<b>Race:</b> NOTE: Claimants may choose more than one Race category								
Native American	547	N/A	270	N/A	277	585	N/A	-38
Asian	113	N/A	108	N/A	5	85	N/A	28
African American	181	N/A	116	N/A	65	135	N/A	46
Pacific Islander	82	N/A	45	N/A	37	119	N/A	-37
White	5,656	N/A	3,941	N/A	1,715	6,805	N/A	-1149
INA	4,367	N/A	1,664	N/A	2,703	4,316	N/A	51
<b>Ethnicity:</b>								
Hispanic/Latino	1,284	17.9%	590	13.1%	694	1,338	19.0%	-54
Non-Hispanic/Latino	4,856	67.6%	3,271	72.7%	1,585	4,667	66.2%	189
INA	1,041	14.5%	639	14.2%	402	1,045	14.8%	-4
<b>Age:</b>								
<22	177	2.5%	99	2.2%	78	120	1.7%	57
22-24	302	4.2%	161	3.6%	141	253	3.6%	49
25-34	1,493	20.8%	821	18.2%	672	1,479	21.0%	14
35-44	1,489	20.7%	945	21.0%	544	1,546	21.9%	-57
45-54	1,488	20.7%	1,019	22.6%	469	1,567	22.2%	-79
55-59	901	12.5%	584	13.0%	317	835	11.8%	66
60-64	663	9.2%	421	9.4%	242	634	9.0%	29
>=65	668	9.3%	449	10.0%	219	613	8.7%	55
<b>Total</b>	<b>7,181</b>		<b>4,499</b>		<b>2,682</b>	<b>7,047</b>		<b>134</b>

# Unemployment Insurance Claimant Characteristics

December 2019



Communications & Research Bureau

Industry	December 2019		November 2019		Monthly Difference	December 2018		Yearly Difference
23-Construction	1,495	21%	614	14%	881	1,575	22%	-80
56-Admin. & Support & Waste Mgt	1,165	16%	504	11%	661	1,238	18%	-73
31-33 Manufacturing	706	10%	487	11%	219	650	9%	56
44-45-Retail Trade	584	8%	463	10%	121	527	7%	57
11-Agriculture & Forestry	500	7%	163	4%	337	514	7%	-14
62-Health Care & Social Assistance	392	5%	407	9%	-15	348	5%	44
72-Accommodation & Food Services	309	4%	279	6%	30	272	4%	37
92-Public Administration	242	3%	153	3%	89	223	3%	19
42-Wholesale Trade	240	3%	174	4%	66	234	3%	6
54-Prof, Scientific, & Tech. Svcs	237	3%	242	5%	-5	234	3%	3
48-49 Transp & Warehousing	223	3%	113	3%	110	198	3%	25
71-Arts, Entertainment & Recreation	205	3%	115	3%	90	183	3%	22
81-Other Services (ex Public Admin)	141	2%	119	3%	22	93	1%	48
52-Finance & Insurance	107	1%	131	3%	-24	108	2%	-1
61-Educational Services	83	1%	81	2%	2	73	1%	10
21-Mining	76	1%	39	1%	37	100	1%	-24
51-Information	74	1%	76	2%	-2	52	1%	22
53-Real Estate & Rental & Leasing	72	1%	70	2%	2	76	1%	-4
22-Utilities	27	0%	13	0%	14	19	0%	8
55-Mgt of Companies & Enterprises	12	0%	13	0%	-1	5	0%	7
INA*	291	4%	244	5%	47	328	5%	-37
<b>Total</b>	<b>7,181</b>		<b>4,500</b>		<b>2,681</b>	<b>7,050</b>		<b>131</b>

Occupations	December 2019		November 2019		Monthly Difference	December 2018		Yearly Difference
47-Construction & Extraction	1,358	19%	559	12%	799	1,491	21%	-133
37-Bld & Grd Cleaning & Maint	855	12%	224	5%	631	834	12%	21
53-Transp & Mat Moving	745	10%	299	7%	446	752	11%	-7
11-Management	611	9%	503	11%	108	461	7%	150
45-Farming, Fishing & Forestry	593	8%	199	4%	394	645	9%	-52
43-Office & Admin Support	592	8%	551	12%	41	535	8%	57
51-Production	407	6%	345	8%	62	410	6%	-3
41-Sales & related	362	5%	330	7%	32	378	5%	-16
49-Install, Mainte & Repair	323	4%	233	5%	90	288	4%	35
35-Food Prep & Related	212	3%	201	4%	11	226	3%	-14
13-Business Financial	167	2%	163	4%	4	151	2%	16
31-Healthcare Support	118	2%	126	3%	-8	90	1%	28
17-Architect & Engineer	111	2%	77	2%	34	102	1%	9
15-Computer Math	88	1%	90	2%	-2	75	1%	13
29-Healthcare Pract & Tech	87	1%	101	2%	-14	81	1%	6
25-Ed Training & Library	77	1%	72	2%	5	66	1%	11
19-Life Phys Social	74	1%	50	1%	24	56	1%	18
27-Art Design, Entert Spt & Media	68	1%	69	2%	-1	60	1%	8
39-Personal Care & Svcs	62	1%	58	1%	4	57	1%	5
33-Protective Svcs	57	1%	49	1%	8	61	1%	-4
21-Community & Social Svcs	55	1%	63	1%	-8	60	1%	-5
23-Legal	12	0%	13	0%	-1	23	0%	-11
55-Military Specific	1	0%	1	0%	0	5	0%	-4
INA*	146	2%	124	3%	22	143	2%	3
<b>Total</b>	<b>7,181</b>		<b>4,500</b>		<b>2,681</b>	<b>7,050</b>		<b>131</b>

\*\* This data reflects UI claims characteristics for the pay period including the 12th of the month.