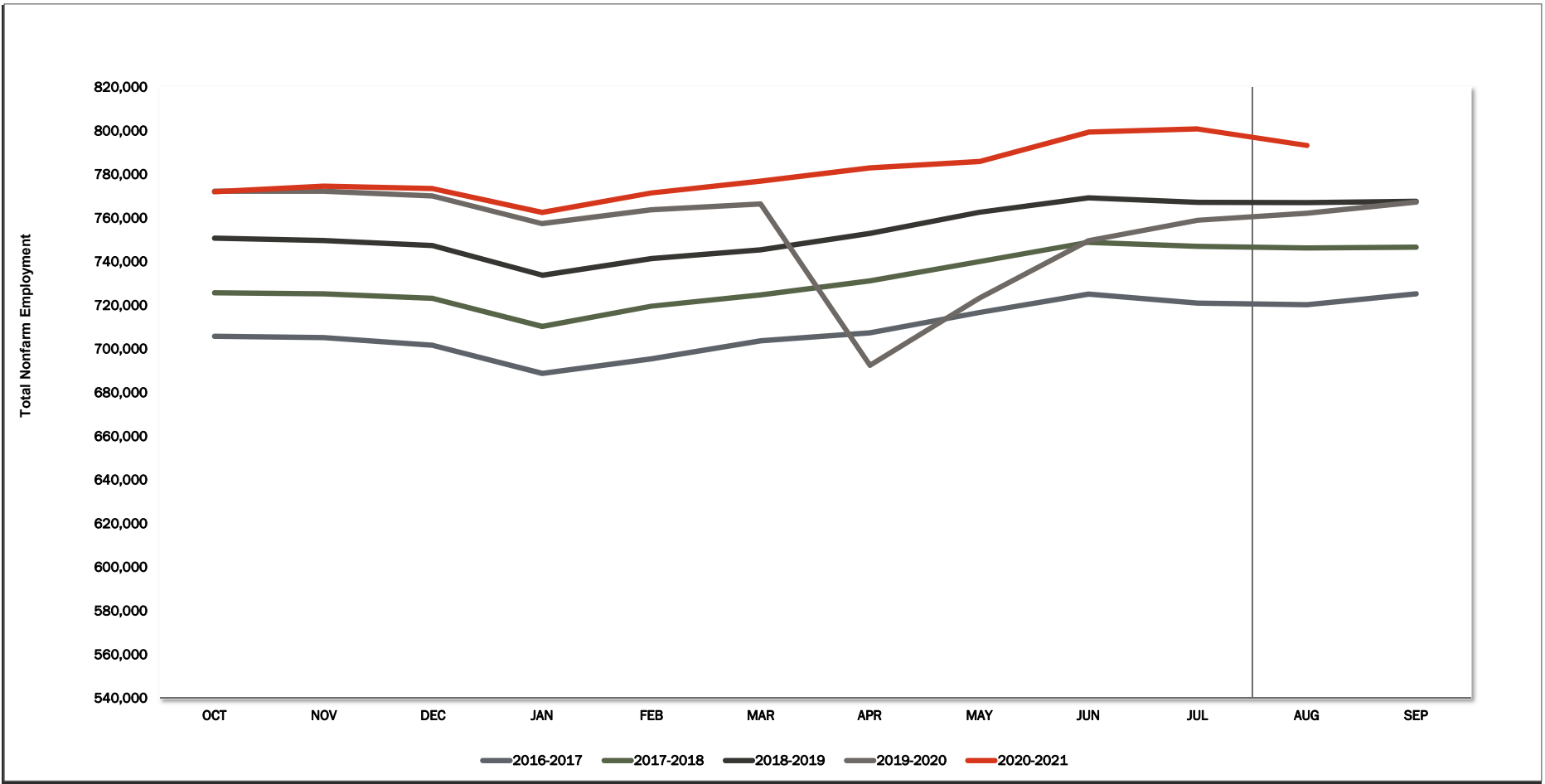
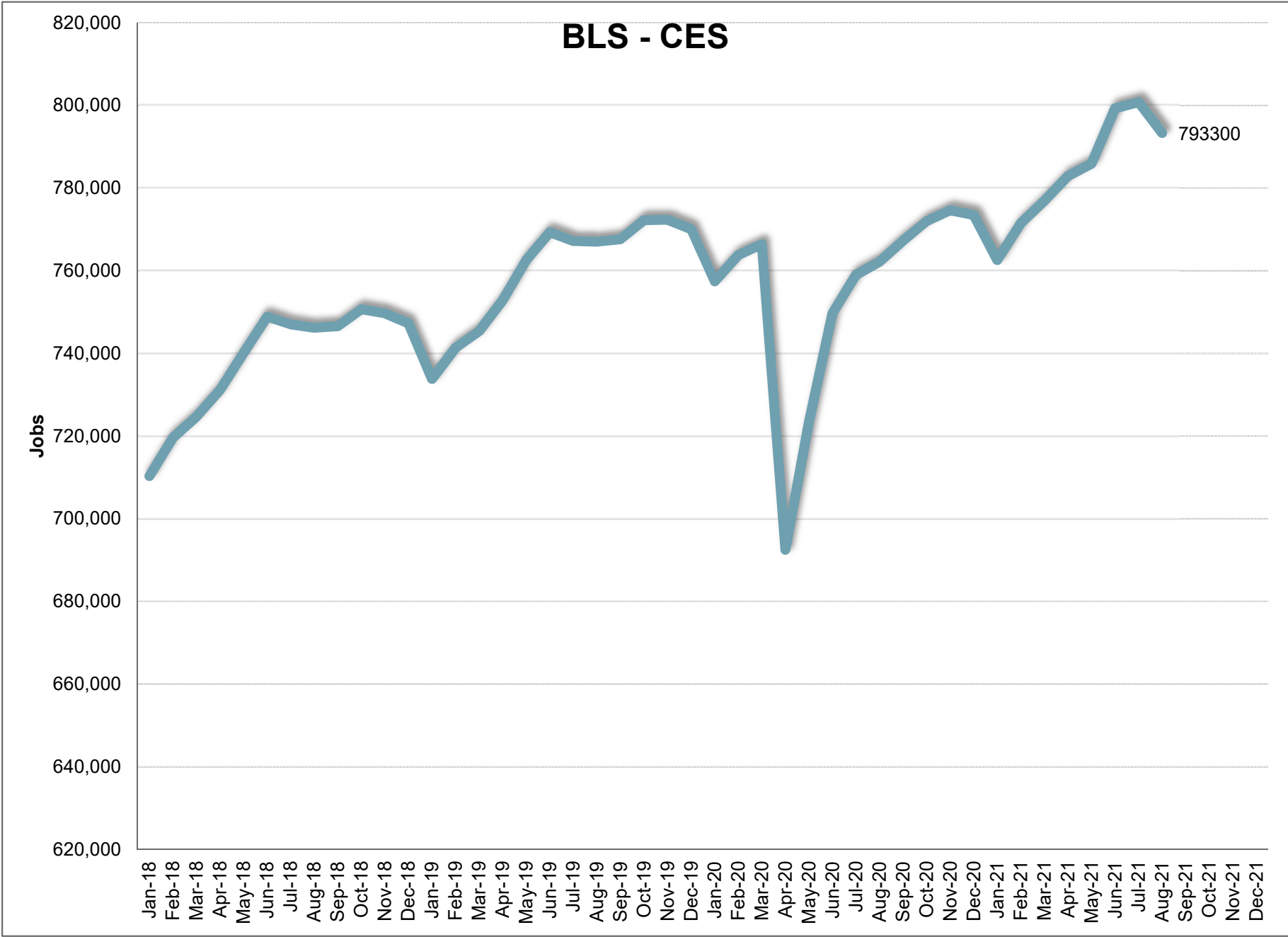


# BLS CES



	JAN	FEB	MAR	APR	MAY	JUN	JUL	AUG	SEP	OCT	NOV	DEC	12 Mth Avg
2015	646,100	652,100	659,200	664,300	673,800	678,600	679,000	676,200	682,600	683,900	682,500	681,200	671,600
2016	666,700	675,300	682,400	687,800	694,500	700,800	702,800	701,100	706,700	705,800	705,200	701,600	694,200
2017	688,800	695,500	703,700	707,300	716,700	725,100	721,000	720,200	725,300	725,700	725,200	723,200	714,800
2018	710,300	719,600	724,700	731,200	740,100	748,900	747,000	746,200	746,600	750,700	749,700	747,300	738,500
2019	733,800	741,400	745,400	752,900	762,600	769,300	767,200	767,000	767,600	772,200	772,300	770,100	760,200
2020	757,400	763,800	766,400	692,500	723,300	749,700	759,000	762,200	767,300	772,000	774,600	773,500	755,100
2021	762,600	771,500	776,900	782,900	785,900	799,300	800,800	793,300					
Mnth-Mnth % Change													
2020	-1.6%	0.8%	0.3%	-9.6%	4.4%	3.6%	1.2%	0.4%	0.7%	0.6%	0.3%	-0.1%	
2021	-1.4%	1.2%	0.7%	0.8%	0.4%	1.7%	0.2%	-0.9%					
5-MTM Avg	-1.8%	1.1%	0.8%	-1.3%	1.9%	1.6%	0.1%	0.0%					
Year-Year % Change													
2020	3.2%	3.0%	2.8%	-8.0%	-5.2%	-2.5%	-1.1%	-0.6%	0.0%	0.0%	0.3%	0.4%	-0.7%
2021	0.7%	1.0%	1.4%	13.1%	8.7%	6.6%	5.5%	4.1%					
5-YTY Avg	3.2%	3.2%	3.1%	0.9%	1.5%	2.0%	2.3%	2.4%					



**August 2021**

**Current Employment Statistics**

**Confidence Interval Bounds of Selected Month's Estimate**

Industry Title	Current Month	Estimated Change			Confidence Interval Bounds of Selected Month's Estimate					
		1 Month	3 Month	12 Month	1 Month		3 Month		12 Month	
					+	-	+	-	+	-
Total Nonfarm	793,300	-7,500	7,400	31,100	-3,628	-11,372	13,774	1,026	42,531	19,669
Total Private	671,300	-6,500	14,800	27,900	-2,669	-10,331	21,104	8,496	39,201	16,599
Goods Producing	133,700	-1,200	2,400	3,100	833	-3,233	5,779	-979	9,455	-3,255
Private Service Providing	537,600	-5,300	12,400	24,800	-2,053	-8,547	17,723	7,077	34,145	15,455
Mining and Logging	4,400	0	600	400	133	-133	850	350	915	-115
Mining, Logging, and Construction	65,700	-1,000	2,700	3,300	683	-2,683	5,455	-55	8,339	-1,739
Construction	61,300	-1,000	2,100	2,900	678	-2,678	4,844	-644	7,912	-2,112
Manufacturing	68,000	-200	-300	-200	942	-1,342	1,654	-2,254	3,672	-4,072
Durable Goods	38,200	100	500	-800	1,067	-867	2,153	-1,153	2,521	-4,121
Non-Durable Goods	29,800	-300	-800	600	307	-907	243	-1,843	2,592	-1,392
Trade, Transportation, and Utilities	154,700	-1,500	1,500	6,200	-43	-2,957	3,954	-954	10,745	1,655
Wholesale Trade	32,300	0	600	800	781	-781	1,870	-670	3,174	-1,574
Retail Trade	93,500	-1,200	700	3,200	-178	-2,222	2,409	-1,009	6,288	112
Transportation and Utilities	28,900	-300	200	2,200	384	-984	1,422	-1,022	4,542	-142
Information	7,600	100	400	200	302	-102	757	43	902	-502
Financial Activities	42,100	-400	1,000	4,000	191	-991	1,987	13	5,921	2,079
Professional and Business Services	101,400	-400	2,500	500	1,141	-1,941	5,050	-50	4,930	-3,930
Professional, Scientific, and Technical Services	44,900	-100	500	1,700	729	-929	1,855	-855	4,107	-707
Management of Companies and Enterprises	7,600	0	100	400	117	-117	317	-117	867	-67
Administrative and Support and Waste Managem	48,900	-300	1,900	-1,600	995	-1,595	4,048	-248	2,090	-5,290
Education and health services	111,700	-2,400	-4,000	1,700	-1,104	-3,696	-1,952	-6,048	5,199	-1,799
Educational Services	11,000	-1,900	-2,700	900	-1,319	-2,481	-1,721	-3,679	2,168	-368
Health Care and Social Assistance	100,700	-500	-1,300	800	658	-1,658	500	-3,100	4,060	-2,460
Leisure and Hospitality	93,400	-600	9,100	11,600	1,172	-2,372	12,018	6,182	16,571	6,629
Arts, Entertainment, and Recreation	16,600	600	3,300	2,800	1,615	-415	5,090	1,510	5,703	-103
Accommodation and Food Services	76,800	-1,200	5,800	8,800	253	-2,653	8,105	3,495	12,835	4,765
Other Services	26,700	-100	1,900	600	813	-1,013	3,311	489	3,030	-1,830

For information on Bureau of Labor Statistic confidence interval calculations, please visit:

[www.bls.gov/sae/790stderr.htm](http://www.bls.gov/sae/790stderr.htm)

# BLS CES

		2021									
		August									
NAICS	Category	AUG	JUL	AUG-2020	Change	%	Avg*	Change	%	Avg*	
00-000000	Total Nonfarm	793,300	800,800	762,200	-7,500	-0.9%	0.0%	31,100	4.1%	2.4%	
05-000000	Total Private	671,300	677,800	643,400	-6,500	-1.0%	0.0%	27,900	4.3%	2.7%	
06-000000	Goods Producing	133,700	134,900	130,600	-1,200	-0.9%	0.3%	3,100	2.4%	3.9%	
07-000000	Service Providing, (Inc. Gov)	659,600	665,900	631,600	-6,300	-0.9%	-0.1%	28,000	4.4%	2.1%	
08-000000	Private Service Providing	537,600	542,900	512,800	-5,300	-1.0%	0.0%	24,800	4.8%	2.4%	
10-000000	Natural Resources	4,400	4,400	4,000	0	0.0%	0.0%	400	10.0%	-0.4%	
20-000000	Construction	61,300	62,300	58,400	-1,000	-1.6%	0.5%	2,900	5.0%	7.5%	
20-236000	Construction of Buildings	14,500	14,300	13,900	200	1.4%	0.7%	600	4.3%	8.2%	
20-236100	Residential Building Const.	8,900	8,600	8,200	300	3.5%	0.4%	700	8.5%	9.1%	
20-237000	Heavy And Civil Const.	7,200	7,300	7,000	-100	-1.4%	1.0%	200	2.9%	6.2%	
20-238000	Specialty Trade Contractors	39,600	40,700	37,500	-1,100	-2.7%	0.4%	2,100	5.6%	7.5%	
20-238100	Foundtn, Strctre, Bldng Contract	10,400	10,600	9,700	-200	-1.9%	0.0%	700	7.2%	8.4%	
20-238200	Building Equipment Contractors	14,200	14,600	13,500	-400	-2.7%	0.7%	700	5.2%	7.1%	
20-238300	Building Finishing Contractors	8,000	8,500	7,600	-500	-5.9%	0.6%	400	5.3%	8.4%	
20-238900	Other Specialty Trade Contractors	7,000	7,000	6,700	0	0.0%	0.3%	300	4.5%	6.5%	
30-000000	Manufacturing	68,000	68,200	68,200	-200	-0.3%	0.1%	-200	-0.3%	1.6%	
31-000000	Durable Goods	38,200	38,100	39,000	100	0.3%	0.0%	-800	-2.1%	1.2%	
31-334000	Computer And Elect. Manufact.	11,300	11,300	11,400	0	0.0%	-0.7%	-100	-0.9%	-1.3%	
31-334100	Computer And Periph. Manufact.	1,600	1,600	1,800	0	0.0%	0.0%	-200	-11.1%	-4.5%	
31-334400	Semiconductor & Othr Elect. Manuf.	8,400	8,400	8,700	0	0.0%	-0.4%	-300	-3.4%	-0.6%	
32-000000	Nondurable Goods	29,800	30,100	29,200	-300	-1.0%	0.3%	600	2.1%	2.1%	
32-311000	Food Manufacturing	18,800	18,900	18,900	-100	-0.5%	0.1%	-100	-0.5%	2.3%	
32-311400	Fruit & Vegetable Manufacturing	6,800	6,900	6,900	-100	-1.4%	-0.3%	-100	-1.4%	-1.6%	
40-000000	Trade, Transportation, & Utilities	154,700	156,200	148,500	-1,500	-1.0%	0.7%	6,200	4.2%	1.8%	
41-000000	Wholesale Trade	32,300	32,300	31,500	0	0.0%	0.4%	800	2.5%	2.6%	
41-423000	Merchant Whsalers Dur. Gds	17,300	17,300	16,800	0	0.0%	0.3%	500	3.0%	3.3%	
41-424000	Merchant Whsalers Nondur. Gds	13,400	13,300	13,100	100	0.8%	0.6%	300	2.3%	1.5%	
42-000000	Retail Trade	93,500	94,700	90,300	-1,200	-1.3%	0.3%	3,200	3.5%	1.2%	
42-441000	Motor Vehicle And Parts Dealers	14,000	14,100	13,600	-100	-0.7%	0.4%	400	2.9%	1.3%	
42-444000	Bldng Materials & Garden Supplies	10,200	10,800	10,100	-600	-5.6%	-2.4%	100	1.0%	5.1%	
42-445000	Food And Beverage Stores	16,900	16,700	16,200	200	1.2%	0.1%	700	4.3%	3.3%	
42-445100	Grocery Stores	14,800	14,700	14,400	100	0.7%	0.1%	400	2.8%	3.6%	
42-452000	General Merchandise Stores	17,900	17,800	17,400	100	0.6%	0.3%	500	2.9%	0.0%	
42-452200	Department Stores	3,700	3,600	3,300	100	2.8%	0.5%	400	12.1%	-7.5%	
42-452300	Other General Merchandise Stores	14,200	14,200	14,100	0	0.0%	0.3%	100	0.7%	2.4%	
43-000000	Transport., Wrhse, And Utilities	28,900	29,200	26,700	-300	-1.0%	2.6%	2,200	8.2%	2.8%	
43-220000	Utilities	3,000	3,000	3,000	0	0.0%	0.0%	0	0.0%	-0.6%	
43-400089	Transportation And Warehousing	25,900	26,200	23,700	-300	-1.1%	3.0%	2,200	9.3%	3.3%	
43-484000	Truck Transportation	10,500	10,800	10,700	-300	-2.8%	0.8%	-200	-1.9%	0.8%	
43-484100	General Freight Trucking	7,200	7,400	7,200	-200	-2.7%	0.6%	0	0.0%	1.2%	
50-000000	Information	7,600	7,500	7,400	100	1.3%	-0.2%	200	2.7%	-4.0%	
50-517000	Telecommunications	2,100	2,100	2,100	0	0.0%	-1.9%	0	0.0%	-5.2%	
55-000000	Financial Activities	42,100	42,500	38,100	-400	-0.9%	-0.3%	4,000	10.5%	2.9%	
55-520000	Finance And Insurance	30,900	31,100	28,200	-200	-0.6%	0.2%	2,700	9.6%	2.4%	
55-522000	Credit Intermediation Activities	13,200	13,300	12,500	-100	-0.8%	0.2%	700	5.6%	1.9%	
55-524000	Insurance Carriers Activities	13,700	13,700	12,700	0	0.0%	0.0%	1,000	7.9%	1.7%	
55-530000	Real Estate And Rental And Leasing	11,200	11,400	9,900	-200	-1.8%	-1.8%	1,300	13.1%	4.4%	
60-000000	Professional And Business Services	101,400	101,800	100,900	-400	-0.4%	0.3%	500	0.5%	3.2%	
60-540000	Prof., Scientific, Technical Services	44,900	45,000	43,200	-100	-0.2%	0.1%	1,700	3.9%	5.2%	
60-541300	Architectural, Engineering, Services	7,900	7,900	7,700	0	0.0%	0.0%	200	2.6%	5.8%	
60-541700	Scientific Research & Development	7,800	7,800	7,400	0	0.0%	0.6%	400	5.4%	4.7%	
60-550000	Mgmt. Of Companies & Enterprises	7,600	7,600	7,200	0	0.0%	0.6%	400	5.6%	2.7%	
60-560000	Admin., Support, Waste Mgmt Serv.	48,900	49,200	50,500	-300	-0.6%	0.4%	-1,600	-3.2%	1.8%	
60-561000	Administrative, Support Services	44,600	44,900	46,400	-300	-0.7%	0.4%	-1,800	-3.9%	1.7%	
60-561300	Employment Services	14,300	14,200	14,100	100	0.7%	1.9%	200	1.4%	-1.4%	
60-561400	Business Support Services	10,200	10,500	12,000	-300	-2.9%	-0.6%	-1,800	-15.0%	0.8%	
60-561420	Telephone Call Centers	7,700	7,900	9,300	-200	-2.5%	-0.4%	-1,600	-17.2%	0.1%	
60-561700	Services To Buildings And Dwellings	13,900	14,000	13,800	-100	-0.7%	-0.6%	100	0.7%	4.6%	
65-000000	Education And Health Services	111,700	114,100	110,000	-2,400	-2.1%	-1.5%	1,700	1.5%	3.2%	
65-610000	Educational Services	11,000	12,900	10,100	-1,900	-14.7%	-17.4%	900	8.9%	3.8%	
65-620000	Health Care And Social Services	100,700	101,200	99,900	-500	-0.5%	0.4%	800	0.8%	3.1%	
65-621000	Ambulatory Health Care	45,700	45,800	44,500	-100	-0.2%	0.5%	1,200	2.7%	5.2%	
65-622000	Hospitals	24,200	24,200	24,000	0	0.0%	0.3%	200	0.8%	1.9%	
65-622100	General Medical And Surgical	21,800	21,800	21,600	0	0.0%	-0.1%	200	0.9%	0.4%	
65-623000	Nursing & Residential Care Facilities	14,800	14,900	15,400	-100	-0.7%	0.1%	-600	-3.9%	1.5%	
65-624000	Social Assistance	16,000	16,300	16,000	-300	-1.8%	0.4%	0	0.0%	2.3%	
70-000000	Leisure And Hospitality	93,400	94,000	81,800	-600	-0.6%	0.4%	11,600	14.2%	2.1%	
70-710000	Arts, Entertainment, Recreation	16,600	16,000	13,800	600	3.8%	-1.0%	2,800	20.3%	3.1%	
70-713000	Amusement Gambling, Recreation	14,300	13,900	12,200	400	2.9%	-0.8%	2,100	17.2%	4.4%	
70-713900	Other Amusement & Recreation Ind.	12,800	12,400	10,300	400	3.2%	-0.4%	2,500	24.3%	4.8%	
70-720000	Accommodation And Food Services	76,800	78,000	68,000	-1,200	-1.5%	0.7%	8,800	12.9%	1.9%	
70-721000	Accommodations	12,200	12,300	10,000	-100	-0.8%	0.7%	2,200	22.0%	0.0%	
70-722000	Food Service And Drinking Places	64,600	65,700	58,000	-1,100	-1.7%	0.7%	6,600	11.4%	2.3%	
70-722511	Full Service Restaurants	26,400	26,900	23,700	-500	-1.9%	0.5%	2,700	11.4%	-0.6%	
70-722590	Limited Service Restaurants	34,500	34,800	30,400	-300	-0.9%	0.2%	4,100	13.5%	5.2%	
80-000000	Other Services	26,700	26,800	26,100	-100	-0.4%	-0.2%	600	2.3%	1.8%	
80-811000	Repair And Maintenance	9,000	9,000	8,300	0	0.0%	0.0%	700	8.4%	3.8%	
80-811100	Automotive Repair & Maintenance	6,500	6,500	6,000	0	0.0%	0.3%	500	8.3%	3.8%	
90-000000	Total Government	122,000	123,000	118,800	-1,000	-0.8%	-0.3%	3,200	2.7%	1.3%	
90-910000	Federal Government	14,300	14,500	15,400	-200	-1.4%	-0.9%	-1,100	-7.1%	2.7%	
90-940000	State And Local Government	107,700	108,500	103,400	-800	-0.7%	-0.2%	4,300	4.2%	1.1%	
90-920000	State Government	30,900	30,400	27,500	500	1.6%	-0.1%	3,400	12.4%	0.2%	
90-921611	State Education	15,100	14,600	11,500	500	3.4%	-0.4%	3,600	31.3%	-0.2%	
90-929999	State Administration	15,800	15,800	16,000	0	0.0%	0.1%	-200	-1.3%	0.6%	
90-930000	Local Government	76,800	78,100	75,900	-1,300	-1.7%	-0.2%	900	1.2%	1.4%	
90-931611	Local Education	37,600	38,400	36,800	-800	-2.1%	-0.2%	800	2.2%	1.6%	
90-939999	Local Administration	39,200	39,700	39,100	-500	-1.3%	-0.3%	100	0.3%	1.2%	

\* = Average is based on the previous five years of experience.

# BLS CES

## PRELIMINARY AND FINAL ESTIMATE COMPARISON

July - 2021

NAICS	Category	Final	Preliminary	Change	%
00-00000	TOTAL NONFARM	800,800	801,400	(600)	-0.1%
05-00000	TOTAL PRIVATE	677,800	678,400	(600)	-0.1%
06-00000	GOODS PRODUCING	134,900	135,000	(100)	-0.1%
07-00000	SERVICE PROVIDING. (INC. GOV)	665,900	666,400	(500)	-0.1%
08-00000	PRIVATE SERVICE PROVIDING	542,900	543,400	(500)	-0.1%
10-00000	NATURAL RESOURCES	4,400	4,500	(100)	-2.2%
20-00000	CONSTRUCTION	62,300	62,300	-	0.0%
20-236000	CONSTRUCTION OF BUILDING	14,300	14,200	100	0.7%
20-236100	RESIDENTIAL BUILDING CONST.	8,600	8,600	0	0.0%
20-237000	HEAVY AND CIVIL CONST.	7,300	7,300	0	0.0%
20-238000	SPECIALTY TRADE CONTRACTORS	40,700	40,800	(100)	-0.2%
20-238100	FOUNDTN, STRCTRE, BLDING CONTRACT	10,600	10,600	0	0.0%
20-238200	BUILDING EQUIPMENT CONTRACTORS	14,600	14,500	100	0.7%
20-238300	BUILDING FINISHING CONTRACTORS	8,500	8,600	(100)	-1.2%
20-238900	OTHER SPECIALTY TRADE CONTRACTORS	7,000	7,100	(100)	-1.4%
30-00000	MANUFACTURING	68,200	68,200	-	0.0%
31-00000	DURABLE GOODS	38,100	38,100	0	0.0%
31-334000	COMPUTER AND ELECT. MANUFACT.	11,300	11,300	0	0.0%
31-334100	COMPUTER AND PERIPH. MANUFACT.	1,600	1,600	0	0.0%
31-334400	SEMICONDUCTER & OTHR ELECT. MANUF.	8,400	8,400	0	0.0%
32-00000	NONDURABLE GOODS	30,100	30,100	0	0.0%
32-311000	FOOD MANUFACTURING	18,900	18,900	0	0.0%
32-311400	FRUIT & VEGETABLE MANUFACTURING	6,900	6,900	0	0.0%
40-00000	TRADE, TRANSPORTATION, & UTILITIES	156,200	156,600	(400)	-0.3%
41-00000	WHOLESALE TRADE	32,300	32,300	0	0.0%
41-423000	MERCHANT WHLSALERS DUR. GDS	17,300	17,300	0	0.0%
41-424000	MERCHANT WHLSALERS NONDUR. GDS	13,300	13,300	0	0.0%
42-00000	RETAIL TRADE	94,700	95,100	(400)	-0.4%
42-441000	MOTOR VEHICLE AND PARTS DEALERS	14,100	14,100	0	0.0%
42-444000	BLDING MATERIALS & GARDEN SUPPLIES	10,800	10,800	0	0.0%
42-445000	FOOD AND BEVERAGE STORES	16,700	16,800	(100)	-0.6%
42-445100	GROCERY STORES	14,700	14,700	0	0.0%
42-452000	GENERAL MERCHANDISE STORES	17,800	17,800	0	0.0%
42-452200	DEPARTMENT STORES	3,600	3,600	0	0.0%
42-452300	OTHER GENERAL MERCHANDISE STORES	14,200	14,200	0	0.0%
43-00000	TRANSPORT, WRHOUSE, AND UTILITIES	29,200	29,200	0	0.0%
43-220000	UTILITIES	3,000	3,000	0	0.0%
43-400089	TRANSPORTATION AND WAREHOUSING	26,200	26,200	0	0.0%
43-484000	TRUCK TRANSPORTATION	10,800	11,000	(200)	-1.8%
43-484100	GENERAL FREIGHT TRUCKING	7,400	7,500	(100)	-1.3%
50-00000	INFORMATION	7,500	7,500	0	0.0%
50-517000	TELECOMMUNICATIONS	2,100	2,100	0	0.0%
55-00000	FINANCIAL ACTIVITIES	42,500	42,300	200	0.5%
55-520000	FINANCE AND INSURANCE	31,100	30,900	200	0.6%
55-522000	CREDIT INTERMEDIATION ACTIVITIES	13,300	13,300	0	0.0%
55-524000	INSURANCE CARRIERS ACTIVITIES	13,700	13,700	0	0.0%
55-530000	REAL ESTATE AND RENTAL AND LEASING	11,400	11,400	0	0.0%
60-00000	PROFESSIONAL AND BUSINESS SERVICES	101,800	101,900	(100)	-0.1%
60-540000	PROF., SCIENTIFIC, TECHNICAL SERVICES	45,000	45,100	(100)	-0.2%
60-541300	ARCHITECTURAL, ENGINEERING, SERVICES	7,900	7,900	0	0.0%
60-541700	SCIENTIFIC RESEARCH & DEVELOPMENT	7,800	7,800	0	0.0%
60-550000	MGMNT. OF COMPANIES & ENTERPRISES	7,600	7,600	0	0.0%
60-560000	ADMIN., SUPPORT, WASTE MGMNT SERV.	49,200	49,200	0	0.0%
60-561000	ADMINISTRATIVE, SUPPORT SERVICES	44,900	44,900	0	0.0%
60-561300	EMPLOYMENT SERVICES	14,200	14,200	0	0.0%
60-561400	BUSINESS SUPPORT SERVICES	10,500	10,500	0	0.0%
60-561420	TELEPHONE CALL CENTERS	7,900	7,900	0	0.0%
60-561700	SERVICES TO BUILDINGS AND DWELLINGS	14,000	14,000	0	0.0%
65-00000	EDUCATION AND HEALTH SERVICES	114,100	114,400	(300)	-0.3%
65-610000	EDUCATIONAL SERVICES	12,900	12,900	0	0.0%
65-620000	HEALTH CARE AND SOCIAL SERVICES	101,200	101,500	(300)	-0.3%
65-621000	AMBULATORY HEALTH CARE	45,800	46,100	(300)	-0.7%
65-622000	HOSPITALS	24,200	24,200	0	0.0%
65-622100	GENERAL MEDICAL AND SURGICAL	21,800	21,900	(100)	-0.5%
65-623000	NURSING & RESIDENTIAL CARE FACILITIES	14,900	14,900	0	0.0%
65-624000	SOCIAL ASSISTANCE	16,300	16,300	0	0.0%
70-00000	LEISURE AND HOSPITALITY	94,000	93,700	300	0.3%
70-710000	ARTS, ENTERTAINMENT, RECREATION	16,000	16,000	0	0.0%
70-713000	AMUSEMENT GAMBLING, RECREATION	13,900	13,800	100	0.7%
70-713900	OTHER AMUSEMENT & RECREATION IND.	12,400	12,400	0	0.0%
70-720000	ACCOMMODATION AND FOOD SERVICES	78,000	77,700	300	0.4%
70-721000	ACCOMMODATIONS	12,300	12,300	0	0.0%
70-722000	FOOD SERVICE AND DRINKING PLACES	65,700	65,400	300	0.5%
70-722511	FULL SERVICE RESTAURANTS	26,900	26,600	300	1.1%
70-722590	LIMITED SERVICE RESTAURANTS	34,800	34,800	0	0.0%
80-00000	OTHER SERVICES	26,800	27,000	(200)	-0.7%
80-811000	REPAIR AND MAINTENANCE	9,000	9,200	(200)	-2.2%
80-811100	AUTOMOTIVE REPAIR & MAINTENANCE	6,500	6,600	(100)	-1.5%
90-00000	TOTAL GOVERNMENT	123,000	123,000	0	0.0%
90-910000	FEDERAL GOVERNMENT	14,500	14,500	0	0.0%
90-940000	STATE AND LOCAL GOVERNMENT	108,500	108,500	0	0.0%
90-920000	STATE GOVERNMENT	30,400	30,400	0	0.0%
90-921611	STATE EDUCATION	14,600	14,600	0	0.0%
90-929999	STATE ADMINISTRATION	15,800	15,800	0	0.0%
90-930000	LOCAL GOVERNMENT	78,100	78,100	0	0.0%
90-931611	LOCAL EDUCATION	38,400	38,400	0	0.0%
90-939999	LOCAL ADMINISTRATION	39,700	39,700	0	0.0%