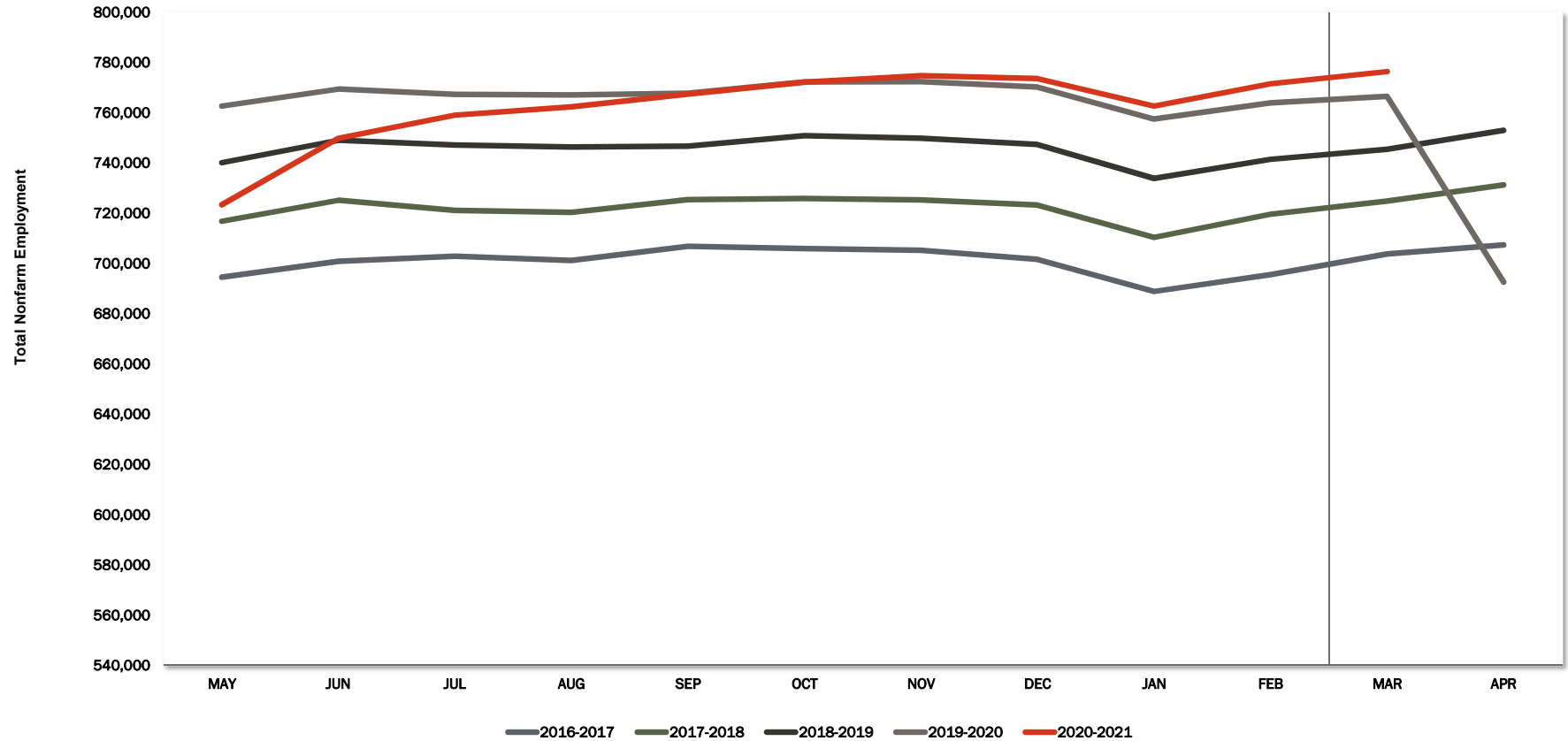
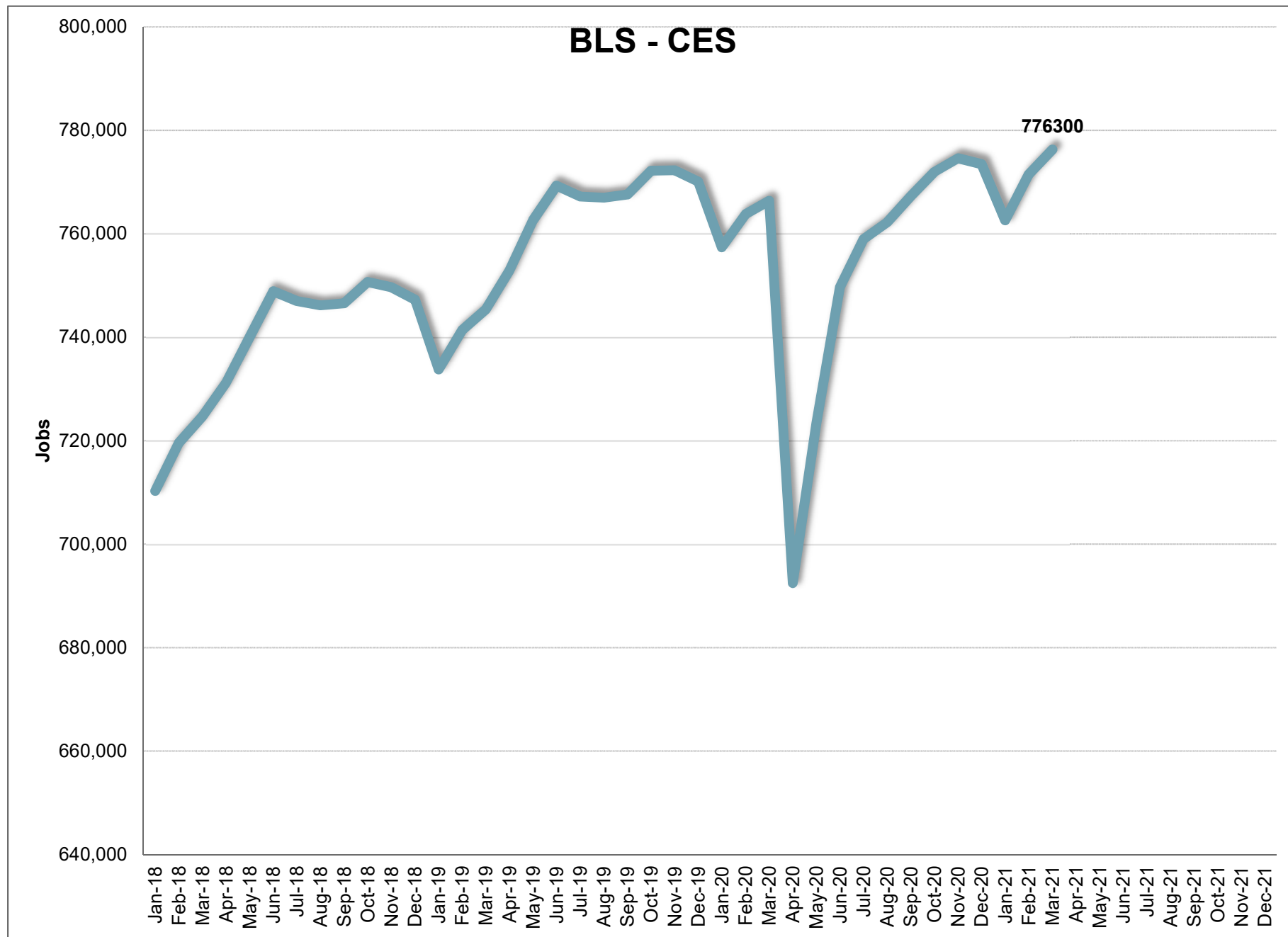


BLS CES



	JAN	FEB	MAR	APR	MAY	JUN	JUL	AUG	SEP	OCT	NOV	DEC	12 Mth Avg
2015	646,100	652,100	659,200	664,300	673,800	678,600	679,000	676,200	682,600	683,900	682,500	681,200	671,600
2016	666,700	675,300	682,400	687,800	694,500	700,800	702,800	701,100	706,700	705,800	705,200	701,600	694,200
2017	688,800	695,500	703,700	707,300	716,700	725,100	721,000	720,200	725,300	725,700	725,200	723,200	714,800
2018	710,300	719,600	724,700	731,200	740,100	748,900	747,000	746,200	746,600	750,700	749,700	747,300	738,500
2019	733,800	741,400	745,400	752,900	762,600	769,300	767,200	767,000	767,600	772,200	772,300	770,100	760,200
2020	757,400	763,800	766,400	692,500	723,300	749,700	759,000	762,200	767,300	772,000	774,600	773,500	755,100
2021	762,600	771,500	776,300										
Mnth-Mnth % Change													
2020	-1.6%	0.8%	0.3%	-9.6%	4.4%	3.6%	1.2%	0.4%	0.7%	0.6%	0.3%	-0.1%	
2021	-1.4%	1.2%	0.6%										
5-MTM Avg	-1.8%	1.1%	0.8%										
Year-Year % Change													
2020	3.2%	3.0%	2.8%	-8.0%	-5.2%	-2.5%	-1.1%	-0.6%	0.0%	0.0%	0.3%	0.4%	-0.7%
2021	0.7%	1.0%	1.3%										
5-YTY Avg	3.2%	3.2%	3.1%										



March 2021**Current Employment Statistics****Confidence Interval Bounds of Selected Month's Estimate**

Industry Title	Current Month	Estimated Change			Confidence Interval Bounds of Selected Month's Estimate					
		1 Month	3 Month	12 Month	1 Month		3 Month		12 Month	
		+	-		+	-	+	-	+	-
Total Nonfarm	776,300	4,800	2,800	9,900	8,672	928	9,174	-3,574	21,331	-1,531
Total Private	648,100	3,800	-300	11,300	7,631	-31	6,004	-6,604	22,601	-1
Goods Producing	128,700	1,000	-800	3,200	3,033	-1,033	2,579	-4,179	9,555	-3,155
Private Service Providing	519,400	2,800	500	8,100	6,047	-447	5,823	-4,823	17,445	-1,245
Mining and Logging	3,400	-100	-200	100	33	-233	50	-450	615	-415
Mining, Logging, and Construction	60,100	700	200	3,400	2,383	-983	2,955	-2,555	8,439	-1,639
Construction	56,700	800	400	3,300	2,478	-878	3,144	-2,344	8,312	-1,712
Manufacturing	68,600	300	-1,000	-200	1,442	-842	954	-2,954	3,672	-4,072
Durable Goods	38,000	-200	-1,500	-1,500	767	-1,167	153	-3,153	1,821	-4,821
Non-Durable Goods	30,600	500	500	1,300	1,107	-107	1,543	-543	3,292	-692
Trade, Transportation, and Utilities	152,600	1,100	-3,400	7,300	2,557	-357	-946	-5,854	11,845	2,755
Wholesale Trade	32,000	500	100	600	1,281	-281	1,370	-1,170	2,974	-1,774
Retail Trade	92,100	700	-2,800	5,000	1,722	-322	-1,091	-4,509	8,088	1,912
Transportation and Utilities	28,500	-100	-700	1,700	584	-784	522	-1,922	4,042	-642
Information	6,900	0	-100	-1,000	202	-202	257	-457	-298	-1,702
Financial Activities	40,400	700	1,400	3,500	1,291	109	2,387	413	5,421	1,579
Professional and Business Services	98,300	-1,200	-1,500	-100	341	-2,741	1,050	-4,050	4,330	-4,530
Professional, Scientific, and Technical Services	44,400	-500	-300	1,400	329	-1,329	1,055	-1,655	3,807	-1,007
Management of Companies and Enterprises	7,500	0	0	300	117	-117	217	-217	767	-167
Administrative and Support and Waste Managen	46,400	-700	-1,200	-1,800	595	-1,995	948	-3,348	1,890	-5,490
Education and health services	115,400	700	2,900	100	1,996	-596	4,948	852	3,599	-3,399
Educational Services	14,000	200	900	300	781	-381	1,879	-79	1,568	-968
Health Care and Social Assistance	101,400	500	2,000	-200	1,658	-658	3,800	200	3,060	-3,460
Leisure and Hospitality	81,100	1,700	1,800	100	3,472	-72	4,718	-1,118	5,071	-4,871
Arts, Entertainment, and Recreation	13,800	600	500	2,000	1,615	-415	2,290	-1,290	4,903	-903
Accommodation and Food Services	67,300	1,100	1,300	-1,900	2,553	-353	3,605	-1,005	2,135	-5,935
Other Services	24,700	-200	-600	-1,800	713	-1,113	811	-2,011	630	-4,230

For information on Bureau of Labor Statistic confidence interval calculations, please visit:

www.bls.gov/sae/790stderr.htm

BLS CES

March		2021									
NAICS	Category	MAR	FEB	MAR-2020	Change	%	Avg*	Yr-to-Yr		%	Avg*
								Change			
00-000000	Total Nonfarm	776,300	771,500	766,400	4,800	0.6%	0.8%	9,900	1.3%	3.1%	
05-000000	Total Private	648,100	644,300	636,800	3,800	0.6%	0.8%	11,300	1.8%	3.4%	
06-000000	Goods Producing	128,700	127,700	125,500	1,000	0.8%	1.4%	3,200	2.5%	4.6%	
07-000000	Service Providing, (Inc. Gov)	647,600	643,800	640,900	3,800	0.6%	0.6%	6,700	1.0%	2.8%	
08-000000	Private Service Providing	519,400	516,600	511,300	2,800	0.5%	0.7%	8,100	1.6%	3.1%	
10-000000	Natural Resources	3,400	3,500	3,300	-100	-2.9%	-8.1%	100	3.0%	-0.5%	
20-000000	Construction	56,700	55,900	53,400	800	1.4%	3.5%	3,300	6.2%	8.2%	
20-236000	Construction of Buildings	14,000	14,000	13,000	0	0.0%	1.6%	1,000	7.7%	8.9%	
20-236100	Residential Building Const.	8,400	8,400	7,500	0	0.0%	1.4%	900	12.0%	9.4%	
20-237000	Heavy And Civil Const.	5,900	5,600	5,800	300	5.4%	6.2%	100	1.7%	6.2%	
20-238000	Specialty Trade Contractors	36,800	36,300	34,600	500	1.4%	3.7%	2,200	6.4%	8.3%	
20-238100	Foundtn, Strctre, Blding Contract	9,800	9,600	9,200	200	2.1%	4.9%	600	6.5%	9.7%	
20-238200	Building Equipment Contractors	13,200	13,200	12,800	0	0.0%	2.1%	400	3.1%	7.3%	
20-238300	Building Finishing Contractors	7,500	7,500	7,000	0	0.0%	2.5%	500	7.1%	9.8%	
20-238900	Other Specialty Trade Contractors	6,300	6,000	5,600	300	5.0%	7.6%	700	12.5%	7.0%	
30-000000	Manufacturing	68,600	68,300	68,800	300	0.4%	0.5%	-200	-0.3%	2.5%	
31-000000	Durable Goods	38,000	38,200	39,500	-200	-0.5%	0.6%	-1,500	-3.8%	2.2%	
31-334000	Computer And Elect. Manufact.	11,300	11,300	11,500	0	0.0%	0.0%	-200	-1.7%	-0.6%	
31-334100	Computer And Periph. Manufact.	1,700	1,700	2,000	0	0.0%	0.0%	-300	-15.0%	-2.6%	
31-334400	Semiconductor & Othr Elect. Manuf.	8,300	8,300	8,600	0	0.0%	-0.2%	-300	-3.5%	0.1%	
32-000000	Nondurable Goods	30,600	30,100	29,300	500	1.7%	0.4%	1,300	4.4%	2.9%	
32-311000	Food Manufacturing	19,500	19,300	19,200	200	1.0%	0.1%	300	1.6%	3.2%	
32-311400	Fruit & Vegetable Manufacturing	7,100	7,100	7,100	0	0.0%	0.0%	0	0.0%	0.3%	
40-000000	Trade, Transportation, & Utilities	152,600	151,500	145,300	1,100	0.7%	0.4%	7,300	5.0%	2.0%	
41-000000	Wholesale Trade	32,000	31,500	31,400	500	1.6%	0.6%	600	1.9%	2.9%	
41-423000	Merchant Whlsalers Dur. Gds	17,100	17,000	16,800	100	0.6%	0.4%	300	1.8%	3.9%	
41-424000	Merchant Whlsalers Nondur. Gds	13,100	12,900	13,000	200	1.6%	1.1%	100	0.8%	1.6%	
42-000000	Retail Trade	92,100	91,400	87,100	700	0.8%	0.4%	5,000	5.7%	1.4%	
42-441000	Motor Vehicle And Parts Dealers	13,500	13,500	13,600	0	0.0%	0.2%	-100	-0.7%	2.4%	
42-444000	Blding Materials & Garden Supplies	9,900	9,400	9,500	500	5.3%	6.1%	400	4.2%	4.6%	
42-445000	Food And Beverage Stores	16,400	16,400	15,200	0	0.0%	0.1%	1,200	7.9%	3.5%	
42-445100	Grocery Stores	14,500	14,600	13,400	-100	-0.7%	0.0%	1,100	8.2%	3.9%	
42-452000	General Merchandise Stores	17,500	17,400	16,300	100	0.6%	-0.4%	1,200	7.4%	-0.7%	
42-452200	Department Stores	3,500	3,500	3,700	0	0.0%	-1.7%	-200	-5.4%	-5.0%	
42-452300	Other General Merchandise Stores	14,000	13,900	12,600	100	0.7%	0.2%	1,400	11.1%	0.8%	
43-000000	Transport., Wrhouse, And Utilities	28,500	28,600	26,800	-100	-0.3%	0.0%	1,700	6.3%	2.9%	
43-220000	Utilities	3,000	2,900	3,000	100	3.4%	1.4%	0	0.0%	0.0%	
43-400089	Transportation And Warehousing	25,500	25,700	23,800	-200	-0.8%	-0.2%	1,700	7.1%	3.3%	
43-484000	Truck Transportation	10,700	10,900	10,400	-200	-1.8%	0.2%	300	2.9%	0.4%	
43-484100	General Freight Trucking	7,200	7,200	7,100	0	0.0%	1.8%	100	1.4%	1.5%	
50-000000	Information	6,900	6,900	7,900	0	0.0%	-1.0%	-1,000	-12.7%	-3.0%	
50-517000	Telecommunications	2,000	2,000	1,900	0	0.0%	-0.7%	100	5.3%	-8.1%	
55-000000	Financial Activities	40,400	39,700	36,900	700	1.8%	0.4%	3,500	9.5%	2.7%	
55-520000	Finance And Insurance	30,100	30,000	27,700	100	0.3%	0.2%	2,400	8.7%	2.2%	
55-522000	Credit Intermediation Activities	13,100	13,100	12,400	0	0.0%	0.0%	700	5.6%	1.9%	
55-524000	Insurance Carriers Activities	13,300	13,300	12,500	0	0.0%	0.3%	800	6.4%	1.4%	
55-530000	Real Estate And Rental And Leasing	10,300	9,700	9,200	600	6.2%	0.8%	1,100	12.0%	4.5%	
60-000000	Professional And Business Services	98,300	99,500	98,400	-1,200	-1.2%	1.4%	-100	-0.1%	3.9%	
60-540000	Prof., Scientific, Technical Services	44,400	44,900	43,000	-500	-1.1%	0.1%	1,400	3.3%	5.0%	
60-541300	Architectural, Engineering, Services	7,500	7,500	7,400	0	0.0%	0.6%	100	1.4%	6.1%	
60-541700	Scientific Research & Development	7,400	7,500	7,000	-100	-1.3%	0.0%	400	5.7%	5.0%	
60-550000	Mgmnt. Of Companies & Enterprises	7,500	7,500	7,200	0	0.0%	0.3%	300	4.2%	3.1%	
60-560000	Admin., Support, Waste Mgmnt Serv.	46,400	47,100	48,200	-700	-1.5%	2.7%	-1,800	-3.7%	3.2%	
60-561000	Administrative, Support Services	41,900	42,500	44,300	-600	-1.4%	2.8%	-2,400	-5.4%	3.2%	
60-561300	Employment Services	13,000	13,300	13,700	-300	-2.3%	1.4%	-700	-5.1%	2.3%	
60-561400	Business Support Services	11,700	11,900	12,700	-200	-1.7%	0.9%	-1,000	-7.9%	1.4%	
60-561420	Telephone Call Centers	9,000	9,200	10,000	-200	-2.2%	0.8%	-1,000	-10.0%	0.6%	
60-561700	Services To Buildings And Dwellings	11,400	10,700	11,300	700	6.5%	8.5%	100	0.9%	4.5%	
65-000000	Education And Health Services	115,400	114,700	115,300	700	0.6%	0.4%	100	0.1%	3.8%	
65-610000	Educational Services	14,000	13,800	13,700	200	1.4%	1.8%	300	2.2%	3.5%	
65-620000	Health Care And Social Services	101,400	100,900	101,600	500	0.5%	0.2%	-200	-0.2%	3.9%	
65-621000	Ambulatory Health Care	45,700	45,400	44,500	300	0.7%	0.3%	1,200	2.7%	5.4%	
65-622000	Hospitals	24,400	24,300	24,600	100	0.4%	0.2%	-200	-0.8%	2.7%	
65-622100	General Medical And Surgical	22,000	21,800	22,200	200	0.9%	0.2%	-200	-0.9%	1.0%	
65-623000	Nursing & Residential Care Facilities	15,200	15,100	16,000	100	0.7%	0.3%	-800	-5.0%	2.4%	
65-624000	Social Assistance	16,100	16,100	16,500	0	0.0%	-0.1%	-400	-2.4%	3.7%	
70-000000	Leisure And Hospitality	81,100	79,400	81,000	1,700	2.1%	1.0%	100	0.1%	4.5%	
70-710000	Arts, Entertainment, Recreation	13,800	13,200	11,800	600	4.5%	1.3%	2,000	16.9%	6.3%	
70-713000	Amusement Gambling, Recreation	11,700	11,200	10,100	500	4.5%	0.9%	1,600	15.8%	6.8%	
70-713900	Other Amusement & Recreation Ind.	11,000	10,600	9,400	400	3.8%	0.0%	1,600	17.0%	6.7%	
70-720000	Accommodation And Food Services	67,300	66,200	69,200	1,100	1.7%	0.9%	-1,900	-2.7%	4.2%	
70-721000	Accommodations	8,900	8,700	10,300	200	2.3%	1.1%	-1,400	-13.6%	4.4%	
70-722000	Food Service And Drinking Places	58,400	57,500	58,900	900	1.6%	0.9%	-500	-0.8%	4.1%	
70-722511	Full Service Restaurants	22,800	22,700	24,800	100	0.4%	0.4%	-2,000	-8.1%	2.1%	
70-722590	Limited Service Restaurants	31,100	30,800	29,400	300	1.0%	1.1%	1,700	5.8%	5.9%	
80-000000	Other Services	24,700	24,900	26,500	-200	-0.8%	0.5%	-1,800	-6.8%	2.9%	
80-811000	Repair And Maintenance	8,200	8,000	8,100	200	2.5%	1.4%	100	1.2%	4.2%	
80-811100	Automotive Repair & Maintenance	6,100	6,100	6,000	0	0.0%	1.1%	100	1.7%	4.6%	
90-000000	Total Government	128,200	127,200	129,600	1,000	0.8%	0.6%	-1,400	-1.1%	1.4%	
90-910000	Federal Government	12,500	12,400	12,700	100	0.8%	1.5%	-200	-1.6%	1.7%	
90-940000	State And Local Government	115,700	114,800	116,900	900	0.8%	0.6%	-1,200	-1.0%	1.4%	
90-920000	State Government	33,200	33,100	31,900	100	0.3%	0.5%	1,300	4.1%	0.9%	
90-921611	State Education	17,700	17,500	16,400	200	1.1%	1.0%	1,300	7.9%	1.2%	
90-929999	State Administration	15,500	15,600	15,500	-100	-0.6%	0.0%	0	0.0%	0.7%	
90-930000	Local Government	82,500	81,700	85,000	800	1.0%	0.6%	-2,500	-2.9%	1.6%	
90-931611	Local Education	44,900	44,200	46,700	700	1.6%	0.4%	-1,800	-3.9%	1.4%	
90-939999	Local Administration	37,600	37,500	38,300	100	0.3%	0.7%	-700	-1.8%	1.8%	

* = Average is based on the previous five years of experience.

BLS CES

PRELIMINARY AND FINAL ESTIMATE COMPARISON

February - 2021

NAICS	Category	Final	Preliminary	Change	%
00-000000	TOTAL NONFARM	771,500	770,800	700	0.1%
05-000000	TOTAL PRIVATE	644,300	643,600	700	0.1%
06-000000	GOODS PRODUCING	127,700	127,800	(100)	-0.1%
07-000000	SERVICE PROVIDING, (INC. GOV)	643,800	643,000	800	0.1%
08-000000	PRIVATE SERVICE PROVIDING	516,600	515,800	800	0.2%
10-000000	NATURAL RESOURCES	3,500	3,500	0	0.0%
20-000000	CONSTRUCTION	55,900	55,900	-	0.0%
20-236000	CONSTRUCTION OF BUILDING	14,000	13,900	100	0.7%
20-236100	RESIDENTIAL BUILDING CONST.	8,400	8,400	0	0.0%
20-237000	HEAVY AND CIVIL CONST.	5,600	5,700	(100)	-1.8%
20-238000	SPECIALTY TRADE CONTRACTORS	36,300	36,300	0	0.0%
20-238100	FOUNDTN, STRCTRE, BLDING CONTRACT	9,600	9,600	0	0.0%
20-238200	BUILDING EQUIPMENT CONTRACTORS	13,200	13,200	0	0.0%
20-238300	BUILDING FINISHING CONTRACTORS	7,500	7,500	0	0.0%
20-238900	OTHER SPECIALTY TRADE CONTRACTORS	6,000	6,000	0	0.0%
30-000000	MANUFACTURING	68,300	68,400	(100)	-0.1%
31-000000	DURABLE GOODS	38,200	38,300	(100)	-0.3%
31-334000	COMPUTER AND ELECT. MANUFACT.	11,300	11,300	0	0.0%
31-334100	COMPUTER AND PERIPH. MANUFACT.	1,700	1,700	0	0.0%
31-334400	SEMICONDUCTOR & OTHR ELECT. MANUF.	8,300	8,300	0	0.0%
32-000000	NONDURABLE GOODS	30,100	30,100	0	0.0%
32-311000	FOOD MANUFACTURING	19,300	19,300	0	0.0%
32-311400	FRUIT & VEGETABLE MANUFACTURING	7,100	7,100	0	0.0%
40-000000	TRADE, TRANSPORTATION, & UTILITIES	151,500	152,200	(700)	-0.5%
41-000000	WHOLESALE TRADE	31,500	31,700	(200)	-0.6%
41-423000	MERCHANT WHLSALERS DUR. GDS	17,000	17,100	(100)	-0.6%
41-424000	MERCHANT WHLSALERS NONDUR. GDS	12,900	13,000	(100)	-0.8%
42-000000	RETAIL TRADE	91,400	91,900	(500)	-0.5%
42-441000	MOTOR VEHICLE AND PARTS DEALERS	13,500	13,500	0	0.0%
42-444000	BLDING MATERIALS & GARDEN SUPPLIES	9,400	9,400	0	0.0%
42-445000	FOOD AND BEVERAGE STORES	16,400	16,400	0	0.0%
42-445100	GROCERY STORES	14,600	14,600	0	0.0%
42-452000	GENERAL MERCHANDISE STORES	17,400	17,400	0	0.0%
42-452200	DEPARTMENT STORES	3,500	3,500	0	0.0%
42-452300	OTHER GENERAL MERCHANDISE STORES	13,900	13,900	0	0.0%
43-000000	TRANSPORT, WRHOUSE, AND UTILITIES	28,600	28,600	0	0.0%
43-220000	UTILITIES	2,900	2,900	0	0.0%
43-400089	TRANSPORTATION AND WAREHOUSING	25,700	25,700	0	0.0%
43-484000	TRUCK TRANSPORTATION	10,900	10,900	0	0.0%
43-484100	GENERAL FREIGHT TRUCKING	7,200	7,200	0	0.0%
50-000000	INFORMATION	6,900	6,900	0	0.0%
50-517000	TELECOMMUNICATIONS	2,000	2,000	0	0.0%
55-000000	FINANCIAL ACTIVITIES	39,700	39,400	300	0.8%
55-520000	FINANCE AND INSURANCE	30,000	30,100	(100)	-0.3%
55-522000	CREDIT INTERMEDIATION ACTIVITIES	13,100	13,100	0	0.0%
55-524000	INSURANCE CARRIERS ACTIVITIES	13,300	13,300	0	0.0%
55-530000	REAL ESTATE AND RENTAL AND LEASING	9,700	9,300	400	4.3%
60-000000	PROFESSIONAL AND BUSINESS SERVICES	99,500	98,700	800	0.8%
60-540000	PROF., SCIENTIFIC, TECHNICAL SERVICES	44,900	44,600	300	0.7%
60-541300	ARCHITECTURAL, ENGINEERING, SERVICES	7,500	7,500	0	0.0%
60-541700	SCIENTIFIC RESEARCH & DEVELOPMENT	7,500	7,500	0	0.0%
60-550000	MGMT. OF COMPANIES & ENTERPRISES	7,500	7,500	0	0.0%
60-560000	ADMIN., SUPPORT, WASTE MGMT SERV.	47,100	46,600	500	1.1%
60-561000	ADMINISTRATIVE, SUPPORT SERVICES	42,500	41,800	700	1.7%
60-561300	EMPLOYMENT SERVICES	13,300	13,200	100	0.8%
60-561400	BUSINESS SUPPORT SERVICES	11,900	11,800	100	0.8%
60-561420	TELEPHONE CALL CENTERS	9,200	9,100	100	1.1%
60-561700	SERVICES TO BUILDINGS AND DWELLINGS	10,700	10,700	0	0.0%
65-000000	EDUCATION AND HEALTH SERVICES	114,700	114,500	200	0.2%
65-610000	EDUCATIONAL SERVICES	13,800	13,800	0	0.0%
65-620000	HEALTH CARE AND SOCIAL SERVICES	100,900	100,700	200	0.2%
65-621000	AMBULATORY HEALTH CARE	45,400	45,200	200	0.4%
65-622000	HOSPITALS	24,300	24,300	0	0.0%
65-622100	GENERAL MEDICAL AND SURGICAL	21,800	21,900	(100)	-0.5%
65-623000	NURSING & RESIDENTIAL CARE FACILITIES	15,100	15,100	0	0.0%
65-624000	SOCIAL ASSISTANCE	16,100	16,100	0	0.0%
70-000000	LEISURE AND HOSPITALITY	79,400	79,100	300	0.4%
70-710000	ARTS, ENTERTAINMENT, RECREATION	13,200	13,000	200	1.5%
70-713000	AMUSEMENT GAMBLING, RECREATION	11,200	11,100	100	0.9%
70-713900	OTHER AMUSEMENT & RECREATION IND.	10,600	10,600	0	0.0%
70-720000	ACCOMMODATION AND FOOD SERVICES	66,200	66,100	100	0.2%
70-721000	ACCOMMODATIONS	8,700	8,700	0	0.0%
70-722000	FOOD SERVICE AND DRINKING PLACES	57,500	57,400	100	0.2%
70-722511	FULL SERVICE RESTAURANTS	22,700	22,800	(100)	-0.4%
70-722590	LIMITED SERVICE RESTAURANTS	30,800	30,700	100	0.3%
80-000000	OTHER SERVICES	24,900	25,000	(100)	-0.4%
80-811000	REPAIR AND MAINTENANCE	8,000	8,000	0	0.0%
80-811100	AUTOMOTIVE REPAIR & MAINTENANCE	6,100	6,100	0	0.0%
90-000000	TOTAL GOVERNMENT	127,200	127,200	0	0.0%
90-910000	FEDERAL GOVERNMENT	12,400	12,400	0	0.0%
90-940000	STATE AND LOCAL GOVERNMENT	114,800	114,800	0	0.0%
90-920000	STATE GOVERNMENT	33,100	33,100	0	0.0%
90-921611	STATE EDUCATION	17,500	17,500	0	0.0%
90-929999	STATE ADMINISTRATION	15,600	15,600	0	0.0%
90-930000	LOCAL GOVERNMENT	81,700	81,700	0	0.0%
90-931611	LOCAL EDUCATION	44,200	44,200	0	0.0%
90-939999	LOCAL ADMINISTRATION	37,500	37,500	0	0.0%