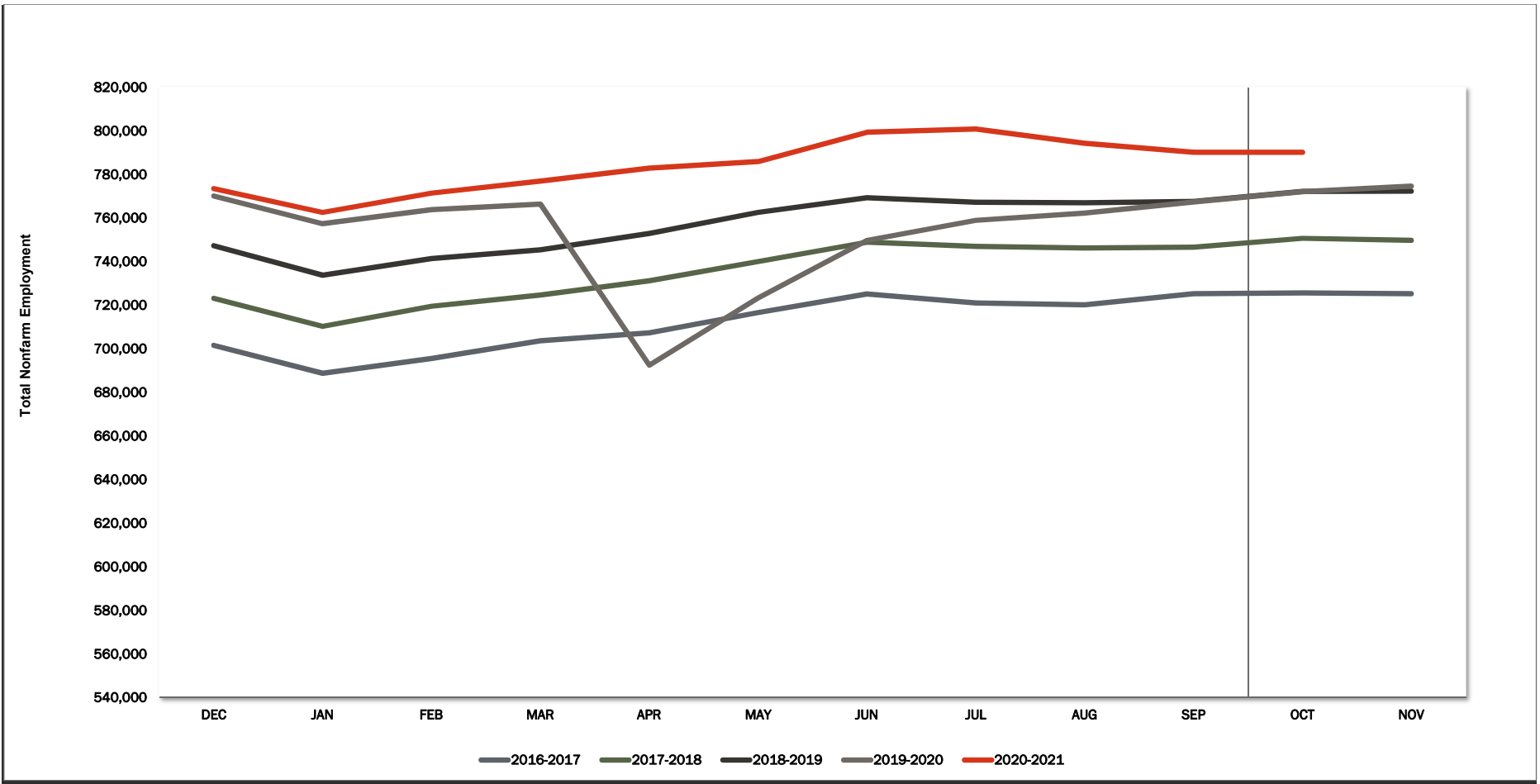
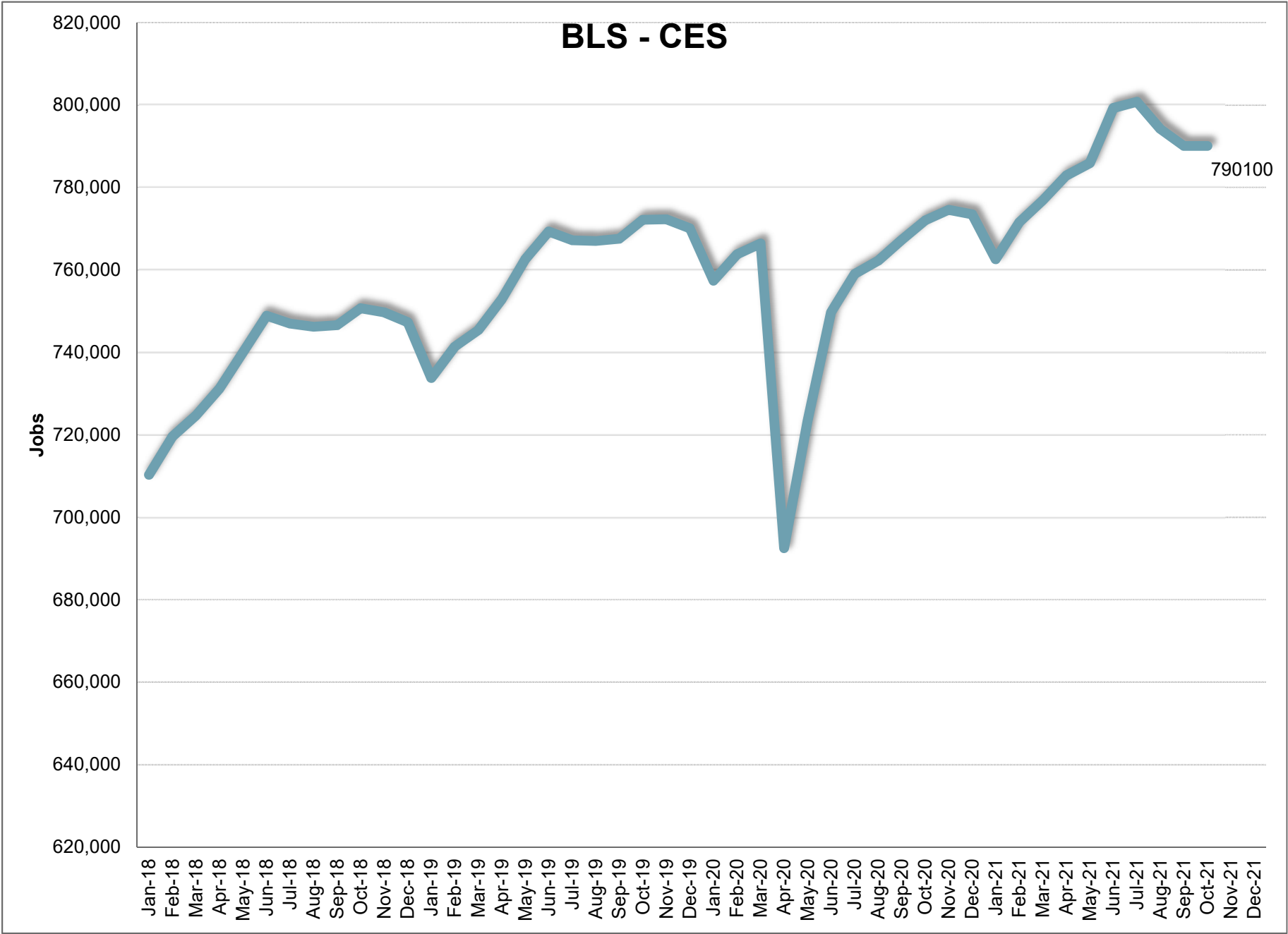


# BLS CES



	JAN	FEB	MAR	APR	MAY	JUN	JUL	AUG	SEP	OCT	NOV	DEC	12 Mth Avg
2015	646,100	652,100	659,200	664,300	673,800	678,600	679,000	676,200	682,600	683,900	682,500	681,200	671,600
2016	666,700	675,300	682,400	687,800	694,500	700,800	702,800	701,100	706,700	705,800	705,200	701,600	694,200
2017	688,800	695,500	703,700	707,300	716,700	725,100	721,000	720,200	725,300	725,700	725,200	723,200	714,800
2018	710,300	719,600	724,700	731,200	740,100	748,900	747,000	746,200	746,600	750,700	749,700	747,300	738,500
2019	733,800	741,400	745,400	752,900	762,600	769,300	767,200	767,000	767,600	772,200	772,300	770,100	760,200
2020	757,400	763,800	766,400	692,500	723,300	749,700	759,000	762,200	767,300	772,000	774,600	773,500	755,100
2021	762,600	771,500	776,900	782,900	785,900	799,300	800,800	794,200	790,100	790,100			
<b>Mnth-Mnth % Change</b>													
2020	-1.6%	0.8%	0.3%	-9.6%	4.4%	3.6%	1.2%	0.4%	0.7%	0.6%	0.3%	-0.1%	
2021	-1.4%	1.2%	0.7%	0.8%	0.4%	1.7%	0.2%	-0.8%	-0.5%	0.0%			
5-MTM Avg	-1.8%	1.1%	0.8%	-1.3%	1.9%	1.6%	0.1%	0.0%	0.5%	0.3%			
<b>Year-Year % Change</b>													
2020	3.2%	3.0%	2.8%	-8.0%	-5.2%	-2.5%	-1.1%	-0.6%	0.0%	0.0%	0.3%	0.4%	-0.7%
2021	0.7%	1.0%	1.4%	13.1%	8.7%	6.6%	5.5%	4.2%	3.0%	2.3%			
5-YTY Avg	3.2%	3.2%	3.1%	0.9%	1.5%	2.0%	2.3%	2.4%	2.4%	2.5%			



**October 2021**

**Current Employment Statistics**

**Confidence Interval Bounds of Selected Month's Estimate**

Industry Title	Current Month	Estimated Change			Confidence Interval Bounds of Selected Month's Estimate					
		1 Month	3 Month	12 Month	1 Month		3 Month		12 Month	
					+	-	+	-	+	-
Total Nonfarm	790,100	0	-10,700	18,100	3,872	-3,872	-4,326	-17,074	29,531	6,669
Total Private	659,500	-2,600	-18,300	15,500	1,231	-6,431	-11,996	-24,604	26,801	4,199
Goods Producing	133,700	700	-1,200	3,200	2,733	-1,333	2,179	-4,579	9,555	-3,155
Private Service Providing	525,800	-3,300	-17,100	12,300	-53	-6,547	-11,777	-22,423	21,645	2,955
Mining and Logging	4,400	0	0	400	133	-133	250	-250	915	-115
Mining, Logging, and Construction	65,300	-100	-1,400	3,600	1,583	-1,783	1,355	-4,155	8,639	-1,439
Construction	60,900	-100	-1,400	3,200	1,578	-1,778	1,344	-4,144	8,212	-1,812
Manufacturing	68,400	800	200	-400	1,942	-342	2,154	-1,754	3,472	-4,272
Durable Goods	37,700	100	-400	-1,300	1,067	-867	1,253	-2,053	2,021	-4,621
Non-Durable Goods	30,700	700	600	900	1,307	93	1,643	-443	2,892	-1,092
Trade, Transportation, and Utilities	152,700	200	-3,500	2,900	1,657	-1,257	-1,046	-5,954	7,445	-1,645
Wholesale Trade	32,400	400	100	1,200	1,181	-381	1,370	-1,170	3,574	-1,174
Retail Trade	92,100	0	-2,600	1,100	1,022	-1,022	-891	-4,309	4,188	-1,988
Transportation and Utilities	28,200	-200	-1,000	600	484	-884	222	-2,222	2,942	-1,742
Information	7,500	-300	0	400	-98	-502	357	-357	1,102	-302
Financial Activities	41,100	-100	-1,400	2,600	491	-691	-413	-2,387	4,521	679
Professional and Business Services	100,300	-200	-1,500	-800	1,341	-1,741	1,050	-4,050	3,630	-5,230
Professional, Scientific, and Technical Services	45,100	700	100	1,200	1,529	-129	1,455	-1,255	3,607	-1,207
Management of Companies and Enterprises	7,700	100	100	400	217	-17	317	-117	867	-67
Administrative and Support and Waste Managen	47,500	-1,000	-1,700	-2,400	295	-2,295	448	-3,848	1,290	-6,090
Education and health services	113,800	2,000	-300	1,500	3,296	704	1,748	-2,348	4,999	-1,999
Educational Services	14,300	1,800	1,400	500	2,381	1,219	2,379	421	1,768	-768
Health Care and Social Assistance	99,500	200	-1,700	1,000	1,358	-958	100	-3,500	4,260	-2,260
Leisure and Hospitality	84,900	-5,000	-9,100	5,800	-3,228	-6,772	-6,182	-12,018	10,771	829
Arts, Entertainment, and Recreation	12,900	-1,300	-3,100	1,100	-285	-2,315	-1,310	-4,890	4,003	-1,803
Accommodation and Food Services	72,000	-3,700	-6,000	4,700	-2,247	-5,153	-3,695	-8,305	8,735	665
Other Services	25,500	100	-1,300	-100	1,013	-813	111	-2,711	2,330	-2,530

For information on Bureau of Labor Statistic confidence interval calculations, please visit:

[www.bls.gov/sae/790stderr.htm](http://www.bls.gov/sae/790stderr.htm)

# BLS CES

		2021									
		October									
NAICS	Category	OCT	SEP	OCT-2020	Change	%	Avg*	Yr-to-Yr Change	%	Avg*	
00-000000	Total Nonfarm	790,100	790,100	772,000	0	0.0%	0.3%	18,100	2.3%	2.5%	
05-000000	Total Private	659,500	662,100	644,000	-2,600	-0.4%	0.0%	15,500	2.4%	2.8%	
06-000000	Goods Producing	133,700	133,000	130,500	700	0.5%	-0.3%	3,200	2.5%	3.9%	
07-000000	Service Providing. (Inc. Gov)	656,400	657,100	641,500	-700	-0.1%	0.5%	14,900	2.3%	2.2%	
08-000000	Private Service Providing	525,800	529,100	513,500	-3,300	-0.6%	0.1%	12,300	2.4%	2.5%	
10-000000	Natural Resources	4,400	4,400	4,000	0	0.0%	-0.5%	400	10.0%	0.6%	
20-000000	Construction	60,900	61,000	57,700	-100	-0.2%	-0.8%	3,200	5.5%	7.6%	
20-236000	Construction of Buildings	14,600	14,600	13,900	0	0.0%	-0.3%	700	5.0%	8.4%	
20-236100	Residential Building Const.	8,700	8,700	8,500	0	0.0%	1.9%	200	2.4%	9.9%	
20-237000	Heavy And Civil Const.	6,900	7,200	6,700	-300	-4.2%	-2.9%	200	3.0%	6.5%	
20-238000	Specialty Trade Contractors	39,400	39,200	37,100	200	0.5%	-0.6%	2,300	6.2%	7.5%	
20-238100	Foundtn, Strctre, Bldng Contract	10,400	10,300	9,800	100	1.0%	0.4%	600	6.1%	8.9%	
20-238200	Building Equipment Contractors	14,400	14,300	13,400	100	0.7%	-0.8%	1,000	7.5%	7.2%	
20-238300	Building Finishing Contractors	7,900	7,900	7,400	0	0.0%	-0.9%	500	6.8%	7.8%	
20-238900	Other Specialty Trade Contractors	6,700	6,700	6,500	0	0.0%	-1.4%	200	3.1%	6.3%	
30-000000	Manufacturing	68,400	67,600	68,800	800	1.2%	0.1%	-400	-0.6%	1.5%	
31-000000	Durable Goods	37,700	37,600	39,000	100	0.3%	-0.4%	-1,300	-3.3%	1.2%	
31-334000	Computer And Elect. Manufact.	11,300	11,200	11,300	100	0.9%	-0.5%	0	0.0%	-1.4%	
31-334100	Computer And Periph. Manufact.	1,600	1,600	1,800	0	0.0%	-0.9%	-200	-11.1%	-4.6%	
31-334400	Semiconductor & Othr Elect. Manuf.	8,300	8,300	8,500	0	0.0%	-0.3%	-200	-2.4%	-1.0%	
32-000000	Nondurable Goods	30,700	30,000	29,800	700	2.3%	0.9%	900	3.0%	1.9%	
32-311000	Food Manufacturing	19,500	19,100	19,400	400	2.1%	1.0%	100	0.5%	2.0%	
32-311400	Fruit & Vegetable Manufacturing	7,000	6,900	7,000	100	1.4%	-0.3%	0	0.0%	-0.5%	
40-000000	Trade, Transportation, & Utilities	152,700	152,500	149,800	200	0.1%	0.4%	2,900	1.9%	1.8%	
41-000000	Wholesale Trade	32,400	32,000	31,200	400	1.3%	0.1%	1,200	3.8%	2.5%	
41-423000	Merchant Whlsalers Dur. Gds	17,300	17,100	16,600	200	1.2%	0.3%	700	4.2%	2.9%	
41-424000	Merchant Whlsalers Nondur. Gds	13,400	13,200	13,000	200	1.5%	0.3%	400	3.1%	1.8%	
42-000000	Retail Trade	92,100	92,100	91,000	0	0.0%	0.5%	1,100	1.2%	1.4%	
42-441000	Motor Vehicle And Parts Dealers	13,900	13,900	13,600	0	0.0%	0.1%	300	2.2%	1.3%	
42-444000	Bldng Materials & Garden Supplies	9,700	9,900	9,700	-200	-2.0%	-1.3%	0	0.0%	4.5%	
42-445000	Food And Beverage Stores	16,500	16,400	16,300	100	0.6%	-0.4%	200	1.2%	3.9%	
42-445100	Grocery Stores	14,400	14,300	14,400	100	0.7%	-0.6%	0	0.0%	4.1%	
42-452000	General Merchandise Stores	18,100	17,900	17,900	200	1.1%	1.8%	200	1.1%	0.3%	
42-452200	Department Stores	3,800	3,700	3,500	100	2.7%	4.4%	300	8.6%	-6.8%	
42-452300	Other General Merchandise Stores	14,300	14,200	14,400	100	0.7%	0.9%	-100	-0.7%	2.7%	
43-000000	Transport., Wrhouse, And Utilities	28,200	28,400	27,600	-200	-0.7%	0.5%	600	2.2%	2.8%	
43-220000	Utilities	3,000	3,000	3,000	0	0.0%	-0.6%	0	0.0%	-0.6%	
43-400089	Transportation And Warehousing	25,200	25,400	24,600	-200	-0.8%	0.6%	600	2.4%	3.3%	
43-484000	Truck Transportation	10,100	10,300	10,700	-200	-1.9%	-0.6%	-600	-5.6%	0.2%	
43-484100	General Freight Trucking	6,900	7,100	7,300	-200	-2.8%	0.3%	-400	-5.5%	1.5%	
50-000000	Information	7,500	7,800	7,100	-300	-3.8%	-0.6%	400	5.6%	-5.0%	
50-517000	Telecommunications	2,100	2,200	2,000	-100	-4.5%	1.5%	100	5.0%	-6.9%	
55-000000	Financial Activities	41,100	41,200	38,500	-100	-0.2%	0.7%	2,600	6.8%	3.1%	
55-520000	Finance And Insurance	30,400	30,400	28,800	0	0.0%	1.1%	1,600	5.6%	2.7%	
55-522000	Credit Intermediation Activities	13,200	13,200	12,700	0	0.0%	0.8%	500	3.9%	2.0%	
55-524000	Insurance Carriers Activities	13,500	13,500	12,900	0	0.0%	0.8%	600	4.7%	1.8%	
55-530000	Real Estate And Rental And Leasing	10,700	10,800	9,700	-100	-0.9%	-0.5%	1,000	10.3%	4.5%	
60-000000	Professional And Business Services	100,300	100,500	101,100	-200	-0.2%	0.1%	-800	-0.8%	3.7%	
60-540000	Prof., Scientific, Technical Services	45,100	44,400	43,900	700	1.6%	1.4%	1,200	2.7%	5.5%	
60-541300	Architectural, Engineering, Services	7,800	7,800	7,700	0	0.0%	1.2%	100	1.3%	5.9%	
60-541700	Scientific Research & Development	7,900	7,700	7,400	200	2.6%	0.6%	500	6.8%	5.0%	
60-550000	Mgmt. Of Companies & Enterprises	7,700	7,600	7,300	100	1.3%	0.6%	400	5.5%	3.7%	
60-560000	Admin., Support, Waste Mgmt Serv.	47,500	48,500	49,900	-1,000	-2.1%	-0.9%	-2,400	-4.8%	2.3%	
60-561000	Administrative, Support Services	43,200	44,200	45,600	-1,000	-2.3%	-1.0%	-2,400	-5.3%	2.2%	
60-561300	Employment Services	13,800	14,300	14,100	-500	-3.5%	-1.9%	-300	-2.1%	1.3%	
60-561400	Business Support Services	10,400	10,300	12,000	100	1.0%	0.4%	-1,600	-13.3%	-0.3%	
60-561420	Telephone Call Centers	7,700	7,700	9,300	0	0.0%	0.2%	-1,600	-17.2%	-0.9%	
60-561700	Services To Buildings And Dwellings	13,200	13,500	13,000	-300	-2.2%	-2.2%	200	1.5%	4.6%	
65-000000	Education And Health Services	113,800	111,800	112,300	2,000	1.8%	1.9%	1,500	1.3%	2.8%	
65-610000	Educational Services	14,300	12,500	13,800	1,800	14.4%	16.8%	500	3.6%	2.9%	
65-620000	Health Care And Social Services	99,500	99,300	98,500	200	0.2%	0.2%	1,000	1.0%	2.8%	
65-621000	Ambulatory Health Care	44,700	44,500	43,200	200	0.4%	-0.1%	1,500	3.5%	4.6%	
65-622000	Hospitals	24,200	24,200	24,100	0	0.0%	0.2%	100	0.4%	1.8%	
65-622100	General Medical And Surgical	21,900	21,900	21,700	0	0.0%	0.2%	200	0.9%	0.1%	
65-623000	Nursing & Residential Care Facilities	14,700	14,800	15,100	-100	-0.7%	0.5%	-400	-2.6%	1.2%	
65-624000	Social Assistance	15,900	15,800	16,100	100	0.6%	0.5%	-200	-1.2%	2.3%	
70-000000	Leisure And Hospitality	84,900	89,900	79,100	-5,000	-5.6%	-3.0%	5,800	7.3%	2.9%	
70-710000	Arts, Entertainment, Recreation	12,900	14,200	11,800	-1,300	-9.2%	-7.2%	1,100	9.3%	4.4%	
70-713000	Amusement Gambling, Recreation	11,000	12,200	10,000	-1,200	-9.8%	-8.6%	1,000	10.0%	5.2%	
70-713900	Other Amusement & Recreation Ind.	10,300	11,300	9,000	-1,000	-8.8%	-6.2%	1,300	14.4%	5.5%	
70-720000	Accommodation And Food Services	72,000	75,700	67,300	-3,700	-4.9%	-2.3%	4,700	7.0%	2.7%	
70-721000	Accommodations	10,100	11,000	8,700	-900	-8.2%	-8.7%	1,400	16.1%	0.6%	
70-722000	Food Service And Drinking Places	61,900	64,700	58,600	-2,800	-4.3%	-1.1%	3,300	5.6%	3.1%	
70-722511	Full Service Restaurants	25,100	26,200	23,800	-1,100	-4.2%	-1.3%	1,300	5.5%	0.5%	
70-722590	Limited Service Restaurants	33,000	34,600	29,900	-1,600	-4.6%	-0.9%	3,100	10.4%	5.0%	
80-000000	Other Services	25,500	25,400	25,600	100	0.4%	-0.3%	-100	-0.4%	1.7%	
80-811000	Repair And Maintenance	9,200	9,100	8,600	100	1.1%	0.2%	600	7.0%	4.5%	
80-811100	Automotive Repair & Maintenance	6,600	6,600	6,100	0	0.0%	-0.4%	500	8.2%	4.1%	
90-000000	Total Government	130,600	128,000	128,000	2,600	2.0%	2.0%	2,600	2.0%	0.9%	
90-910000	Federal Government	13,400	14,000	13,900	-600	-4.3%	-3.6%	-500	-3.6%	1.5%	
90-940000	State And Local Government	117,200	114,000	114,100	3,200	2.8%	2.7%	3,100	2.7%	0.8%	
90-920000	State Government	34,000	33,000	32,000	1,000	3.0%	3.5%	2,000	6.3%	0.7%	
90-921611	State Education	18,700	17,400	16,200	1,300	7.5%	7.3%	2,500	15.4%	0.5%	
90-929999	State Administration	15,300	15,600	15,800	-300	-1.9%	-0.3%	-500	-3.2%	0.9%	
90-930000	Local Government	83,200	81,000	82,100	2,200	2.7%	2.4%	1,100	1.3%	0.8%	
90-931611	Local Education	45,100	42,800	43,500	2,300	5.4%	6.0%	1,600	3.7%	0.2%	
90-939999	Local Administration	38,100	38,200	38,600	-100	-0.3%	-1.7%	-500	-1.3%	1.6%	

\* = Average is based on the previous five years of experience.

BLS CES

PRELIMINARY AND FINAL ESTIMATE COMPARISON

September - 2021

NAICS	Category	Final	Preliminary	Change	%
00-000000	TOTAL NONFARM	790,100	788,400	1,700	0.2%
05-000000	TOTAL PRIVATE	662,100	661,700	400	0.1%
06-000000	GOODS PRODUCING	133,000	133,600	(600)	-0.4%
07-000000	SERVICE PROVIDING. (INC. GOV)	657,100	654,800	2,300	0.4%
08-000000	PRIVATE SERVICE PROVIDING	529,100	528,100	1,000	0.2%
10-000000	NATURAL RESOURCES	4,400	4,400	0	0.0%
20-000000	CONSTRUCTION	61,000	61,600	(600)	-1.0%
20-236000	CONSTRUCTION OF BUILDING	14,600	14,800	(200)	-1.4%
20-236100	RESIDENTIAL BUILDING CONST.	8,700	8,800	(100)	-1.1%
20-237000	HEAVY AND CIVIL CONST.	7,200	7,200	0	0.0%
20-238000	SPECIALTY TRADE CONTRACTORS	39,200	39,600	(400)	-1.0%
20-238100	FOUNDN, STRCTRE, BLDING CONTRACT	10,300	10,400	(100)	-1.0%
20-238200	BUILDING EQUIPMENT CONTRACTORS	14,300	14,400	(100)	-0.7%
20-238300	BUILDING FINISHING CONTRACTORS	7,900	8,000	(100)	-1.3%
20-238900	OTHER SPECIALTY TRADE CONTRACTORS	6,700	6,800	(100)	-1.5%
30-000000	MANUFACTURING	67,600	67,600	-	0.0%
31-000000	DURABLE GOODS	37,600	37,500	100	0.3%
31-334000	COMPUTER AND ELECT. MANUFACT.	11,200	11,200	0	0.0%
31-334100	COMPUTER AND PERIPH. MANUFACT.	1,600	1,600	0	0.0%
31-334400	SEMICONDUCTOR & OTHR ELECT. MANUF.	8,300	8,300	0	0.0%
32-000000	NONDURABLE GOODS	30,000	30,100	(100)	-0.3%
32-311000	FOOD MANUFACTURING	19,100	19,100	0	0.0%
32-311400	FRUIT & VEGETABLE MANUFACTURING	6,900	6,900	0	0.0%
40-000000	TRADE, TRANSPORTATION, & UTILITIES	152,500	152,300	200	0.1%
41-000000	WHOLESALE TRADE	32,000	32,000	0	0.0%
41-423000	MERCHANT WHLSALERS DUR. GDS	17,100	17,100	0	0.0%
41-424000	MERCHANT WHLSALERS NONDUR. GDS	13,200	13,200	0	0.0%
42-000000	RETAIL TRADE	92,100	92,000	100	0.1%
42-441000	MOTOR VEHICLE AND PARTS DEALERS	13,900	13,900	0	0.0%
42-444000	BLDING MATERIALS & GARDEN SUPPLIES	9,900	9,900	0	0.0%
42-445000	FOOD AND BEVERAGE STORES	16,400	16,400	0	0.0%
42-445100	GROCERY STORES	14,300	14,200	100	0.7%
42-452000	GENERAL MERCHANDISE STORES	17,900	17,900	0	0.0%
42-452200	DEPARTMENT STORES	3,700	3,700	0	0.0%
42-452300	OTHER GENERAL MERCHANDISE STORES	14,200	14,200	0	0.0%
43-000000	TRANSPORT., WRHOUSE, AND UTILITIES	28,400	28,300	100	0.4%
43-220000	UTILITIES	3,000	3,000	0	0.0%
43-400089	TRANSPORTATION AND WAREHOUSING	25,400	25,300	100	0.4%
43-484000	TRUCK TRANSPORTATION	10,300	10,300	0	0.0%
43-484100	GENERAL FREIGHT TRUCKING	7,100	7,000	100	1.4%
50-000000	INFORMATION	7,800	7,800	0	0.0%
50-517000	TELECOMMUNICATIONS	2,200	2,200	0	0.0%
55-000000	FINANCIAL ACTIVITIES	41,200	41,000	200	0.5%
55-520000	FINANCE AND INSURANCE	30,400	30,300	100	0.3%
55-522000	CREDIT INTERMEDIATION ACTIVITIES	13,200	13,200	0	0.0%
55-524000	INSURANCE CARRIERS ACTIVITIES	13,500	13,400	100	0.7%
55-530000	REAL ESTATE AND RENTAL AND LEASING	10,800	10,700	100	0.9%
60-000000	PROFESSIONAL AND BUSINESS SERVICES	100,500	100,500	0	0.0%
60-540000	PROF., SCIENTIFIC, TECHNICAL SERVICES	44,400	44,500	(100)	-0.2%
60-541300	ARCHITECTURAL, ENGINEERING, SERVICES	7,800	7,800	0	0.0%
60-541700	SCIENTIFIC RESEARCH & DEVELOPMENT	7,700	7,700	0	0.0%
60-550000	MGMNT. OF COMPANIES & ENTERPRISES	7,600	7,600	0	0.0%
60-560000	ADMIN., SUPPORT, WASTE MGMNT SERV.	48,500	48,400	100	0.2%
60-561000	ADMINISTRATIVE, SUPPORT SERVICES	44,200	44,200	0	0.0%
60-561300	EMPLOYMENT SERVICES	14,300	14,300	0	0.0%
60-561400	BUSINESS SUPPORT SERVICES	10,300	10,300	0	0.0%
60-561420	TELEPHONE CALL CENTERS	7,700	7,700	0	0.0%
60-561700	SERVICES TO BUILDINGS AND DWELLINGS	13,500	13,500	0	0.0%
65-000000	EDUCATION AND HEALTH SERVICES	111,800	111,300	500	0.4%
65-610000	EDUCATIONAL SERVICES	12,500	12,400	100	0.8%
65-620000	HEALTH CARE AND SOCIAL SERVICES	99,300	98,900	400	0.4%
65-621000	AMBULATORY HEALTH CARE	44,500	44,400	100	0.2%
65-622000	HOSPITALS	24,200	24,100	100	0.4%
65-622100	GENERAL MEDICAL AND SURGICAL	21,900	21,800	100	0.5%
65-623000	NURSING & RESIDENTIAL CARE FACILITIES	14,800	14,700	100	0.7%
65-624000	SOCIAL ASSISTANCE	15,800	15,700	100	0.6%
70-000000	LEISURE AND HOSPITALITY	89,900	89,800	100	0.1%
70-710000	ARTS, ENTERTAINMENT, RECREATION	14,200	14,600	(400)	-2.7%
70-713000	AMUSEMENT GAMBLING, RECREATION	12,200	12,300	(100)	-0.8%
70-713900	OTHER AMUSEMENT & RECREATION IND.	11,300	11,300	0	0.0%
70-720000	ACCOMMODATION AND FOOD SERVICES	75,700	75,200	500	0.7%
70-721000	ACCOMMODATIONS	11,000	11,000	0	0.0%
70-722000	FOOD SERVICE AND DRINKING PLACES	64,700	64,200	500	0.8%
70-722511	FULL SERVICE RESTAURANTS	26,200	26,200	0	0.0%
70-722590	LIMITED SERVICE RESTAURANTS	34,600	34,300	300	0.9%
80-000000	OTHER SERVICES	25,400	25,400	0	0.0%
80-811000	REPAIR AND MAINTENANCE	9,100	9,100	0	0.0%
80-811100	AUTOMOTIVE REPAIR & MAINTENANCE	6,600	6,600	0	0.0%
90-000000	TOTAL GOVERNMENT	128,000	126,700	1,300	1.0%
90-910000	FEDERAL GOVERNMENT	14,000	14,000	0	0.0%
90-940000	STATE AND LOCAL GOVERNMENT	114,000	112,700	1,300	1.2%
90-920000	STATE GOVERNMENT	33,000	31,700	1,300	4.1%
90-921611	STATE EDUCATION	17,400	16,100	1,300	8.1%
90-929999	STATE ADMINISTRATION	15,600	15,600	0	0.0%
90-930000	LOCAL GOVERNMENT	81,000	81,000	0	0.0%
90-931611	LOCAL EDUCATION	42,800	42,800	0	0.0%
90-939999	LOCAL ADMINISTRATION	38,200	38,200	0	0.0%