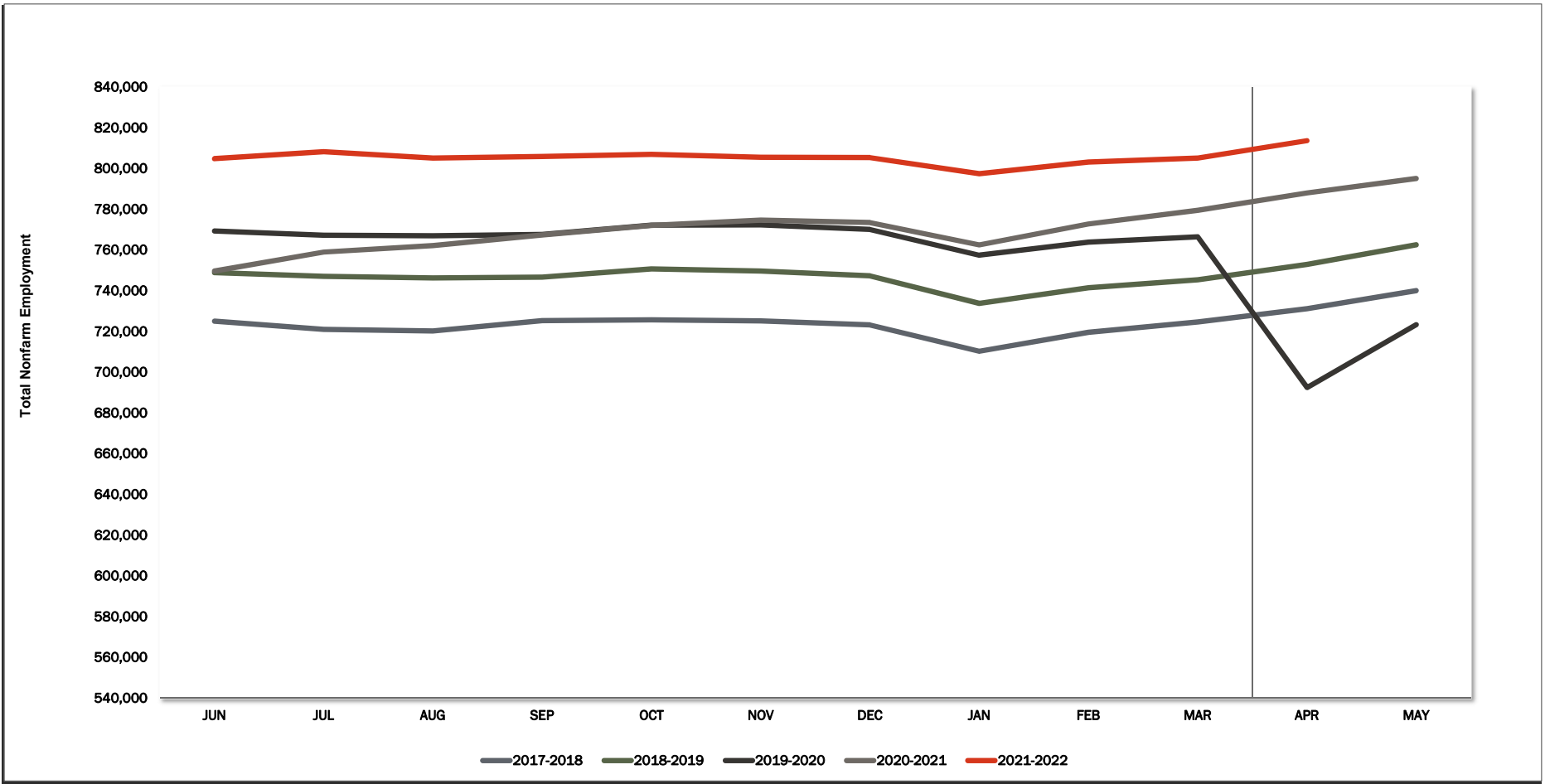
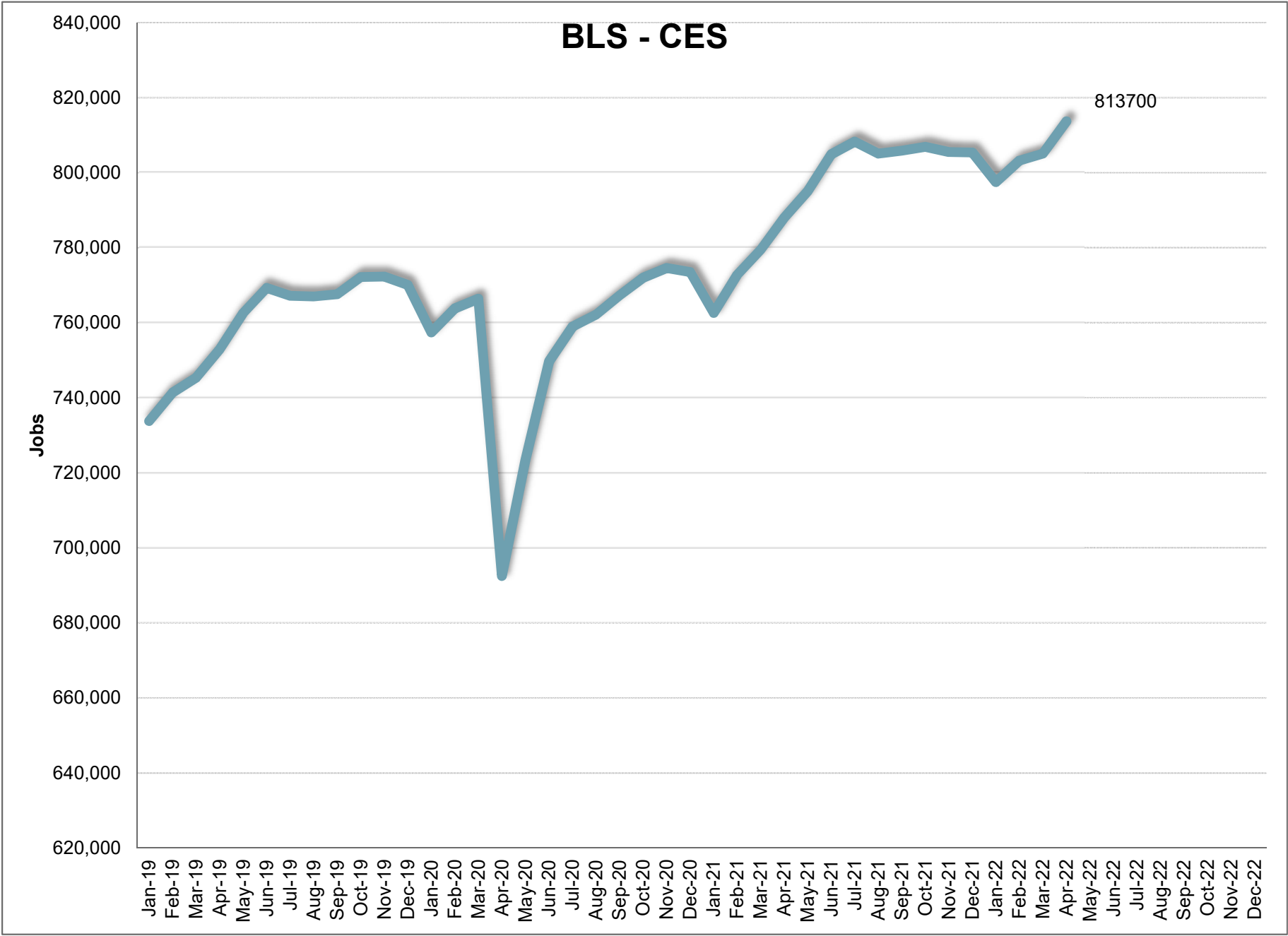


BLS CES



	JAN	FEB	MAR	APR	MAY	JUN	JUL	AUG	SEP	OCT	NOV	DEC	12 Mth Avg
2016	666,700	675,300	682,400	687,800	694,500	700,800	702,800	701,100	706,700	705,800	705,200	701,600	694,200
2017	688,800	695,500	703,700	707,300	716,700	725,100	721,000	720,200	725,300	725,700	725,200	723,200	714,800
2018	710,300	719,600	724,700	731,200	740,100	748,900	747,000	746,200	746,600	750,700	749,700	747,300	738,500
2019	733,800	741,400	745,400	752,900	762,600	769,300	767,200	767,000	767,600	772,200	772,300	770,100	760,200
2020	757,400	763,800	766,400	692,500	723,300	749,700	759,000	762,200	767,300	772,000	774,600	773,500	755,100
2021	762,600	772,800	779,500	788,000	795,100	804,900	808,300	805,100	805,900	806,900	805,500	805,400	795,000
2022	797,500	803,200	805,100	813,700									
	Mnth-Mnth % Change												
2021	-1.4%	1.3%	0.9%	1.1%	0.9%	1.2%	0.4%	-0.4%	0.1%	0.1%	-0.2%	0.0%	
2022	-1.0%	0.7%	0.2%	1.1%									
5-MTM Avg	-1.7%	1.1%	0.7%	-1.2%									
	Year-Year % Change												
2021	0.7%	1.2%	1.7%	13.8%	9.9%	7.4%	6.5%	5.6%	5.0%	4.5%	4.0%	4.1%	Avg
2022	4.6%	3.9%	3.3%	3.3%									5.3%
5-YTY Avg	2.7%	2.7%	2.7%	3.0%									



April 2022

Current Employment Statistics

Confidence Interval Bounds of Selected Month's Estimate

Industry Title	Current Month	Estimated Change			Confidence Interval Bounds of Selected Month's Estimate					
		1 Month	3 Month	12 Month	1 Month		3 Month		12 Month	
					+	-	+	-	+	-
Total Nonfarm	813,700	8,600	16,200	30,800	13,005	4,195	23,548	8,852	44,634	16,966
Total Private	683,900	7,100	12,700	30,000	11,449	2,751	19,951	5,449	43,639	16,361
Goods Producing	136,300	2,200	3,500	6,000	4,177	223	6,787	213	12,215	-215
Private Service Providing	547,600	4,900	9,200	24,000	8,772	1,028	15,663	2,737	36,142	11,858
Mining and Logging	4,300	200	200	900	379	21	532	-132	1,616	184
Mining, Logging, and Construction	64,600	1,800	3,500	2,400	3,351	249	6,025	975	6,991	-2,191
Construction	60,300	1,600	3,300	1,500	3,141	59	5,804	796	6,035	-3,035
Manufacturing	71,700	400	0	3,600	1,626	-826	2,104	-2,104	7,788	-588
Durable Goods	40,600	-200	-800	3,100	803	-1,203	904	-2,504	6,418	-218
Non-Durable Goods	31,100	600	800	500	1,304	-104	2,034	-434	3,056	-2,056
Trade, Transportation, and Utilities	163,100	1,500	600	10,300	3,150	-150	3,408	-2,208	15,518	5,082
Wholesale Trade	35,100	800	800	3,000	1,504	96	1,965	-365	5,328	672
Retail Trade	95,400	1,000	1,000	3,200	2,145	-145	2,888	-888	6,608	-208
Transportation and Utilities	32,600	-300	-1,200	4,100	657	-1,257	521	-2,921	7,291	909
Information	7,900	-100	0	700	166	-366	474	-474	1,746	-346
Financial Activities	39,400	-500	400	-1,400	166	-1,166	1,548	-748	1,056	-3,856
Professional and Business Services	106,700	3,000	5,900	8,300	4,816	1,184	8,924	2,876	14,171	2,429
Professional, Scientific, and Technical Services	49,200	0	1,800	4,800	725	-725	3,030	570	7,363	2,237
Management of Companies and Enterprises	8,000	100	100	600	245	-45	365	-165	1,177	23
Administrative and Support and Waste Managem	49,500	2,900	4,000	2,900	4,558	1,242	6,749	1,251	8,151	-2,351
Education and health services	118,900	500	500	3,400	2,152	-1,152	3,170	-2,170	8,379	-1,579
Educational Services	14,100	-200	500	700	440	-840	1,652	-652	2,424	-1,024
Health Care and Social Assistance	104,800	700	0	2,700	2,223	-823	2,408	-2,408	7,372	-1,972
Leisure and Hospitality	84,800	600	1,500	1,000	2,775	-1,575	5,193	-2,193	7,774	-5,774
Arts, Entertainment, and Recreation	14,600	0	0	0	1,137	-1,137	2,058	-2,058	3,418	-3,418
Accommodation and Food Services	70,200	600	1,500	1,000	2,454	-1,254	4,566	-1,566	6,848	-4,848
Other Services	26,800	-100	300	1,700	903	-1,103	1,864	-1,264	4,511	-1,111

For information on Bureau of Labor Statistic confidence interval calculations, please visit:

www.bls.gov/sae/790stderr.htm

BLS CES

		2022									
		April									
NAICS	Category	APR	MAR	APR-2021	Change	%	Avg*	Change	%	Avg*	
00-000000	Total Nonfarm	813,700	805,100	788,000	8,600	1.1%	-1.2%	25,700	3.3%	3.0%	
05-000000	Total Private	683,900	676,800	662,000	7,100	1.0%	-1.4%	21,900	3.3%	3.5%	
06-000000	Goods Producing	136,300	134,100	134,000	2,200	1.6%	0.5%	2,300	1.7%	4.5%	
07-000000	Service Providing, (Inc. Gov)	677,400	671,000	654,000	6,400	1.0%	-1.6%	23,400	3.6%	2.7%	
08-000000	Private Service Providing	547,600	542,700	528,000	4,900	0.9%	-1.8%	19,600	3.7%	3.3%	
10-000000	Natural Resources	4,300	4,100	3,700	200	4.9%	-6.4%	600	16.2%	2.6%	
20-000000	Construction	60,300	58,700	60,100	1,600	2.7%	3.1%	200	0.3%	8.2%	
20-236000	Construction of Buildings	14,100	13,900	14,400	200	1.4%	1.8%	-300	-2.1%	9.2%	
20-236100	Residential Building Const.	8,700	8,600	8,800	100	1.2%	2.0%	-100	-1.1%	11.2%	
20-237000	Heavy And Civil Const.	7,000	6,600	6,800	400	6.1%	8.4%	200	2.9%	7.7%	
20-238000	Specialty Trade Contractors	39,200	38,200	38,900	1,000	2.6%	2.7%	300	0.8%	8.0%	
20-238100	Foundtn, Strctre, Bldng Contract	10,100	9,900	10,200	200	2.0%	3.8%	-100	-1.0%	9.1%	
20-238200	Building Equipment Contractors	14,500	14,200	14,100	300	2.1%	0.5%	400	2.8%	7.0%	
20-238300	Building Finishing Contractors	7,800	7,700	7,900	100	1.3%	1.6%	-100	-1.3%	8.5%	
20-238900	Other Specialty Trade Contractors	6,800	6,400	6,700	400	6.3%	7.3%	100	1.5%	8.0%	
30-000000	Manufacturing	71,700	71,300	70,200	400	0.6%	-1.0%	1,500	2.1%	1.9%	
31-000000	Durable Goods	40,600	40,800	40,400	-200	-0.5%	-0.9%	200	0.5%	1.8%	
31-334000	Computer And Elect. Manufact.	10,300	10,300	10,900	0	0.0%	-0.5%	-600	-5.5%	-2.3%	
31-334100	Computer And Periph. Manufact.	1,600	1,600	1,700	0	0.0%	-1.0%	-100	-5.9%	-4.7%	
31-334400	Semiconductor & Othr Elect. Manuf.	7,600	7,700	8,200	-100	-1.3%	0.0%	-600	-7.3%	-2.0%	
32-000000	Nondurable Goods	31,100	30,500	29,800	600	2.0%	-1.2%	1,300	4.4%	2.2%	
32-311000	Food Manufacturing	19,500	19,700	19,100	-200	-1.0%	-1.3%	400	2.1%	2.1%	
32-311400	Fruit & Vegetable Manufacturing	7,000	7,100	7,100	-100	-1.4%	-1.4%	-100	-1.4%	0.0%	
40-000000	Trade, Transportation, & Utilities	163,100	161,600	155,500	1,500	0.9%	-1.1%	7,600	4.9%	3.0%	
41-000000	Wholesale Trade	35,100	34,300	32,500	800	2.3%	0.0%	2,600	8.0%	3.1%	
41-423000	Merchant Whlsalers Dur. Gds	19,100	18,800	17,700	300	1.6%	-0.2%	1,400	7.9%	4.0%	
41-424000	Merchant Whlsalers Nondur. Gds	13,900	13,700	13,100	200	1.5%	0.2%	800	6.1%	2.0%	
42-000000	Retail Trade	95,400	94,400	91,700	1,000	1.1%	-1.5%	3,700	4.0%	2.0%	
42-441000	Motor Vehicle And Parts Dealers	14,600	14,400	13,900	200	1.4%	-0.9%	700	5.0%	1.6%	
42-444000	Bldng Materials & Garden Supplies	10,300	10,300	10,700	0	0.0%	4.2%	-400	-3.7%	4.8%	
42-445000	Food And Beverage Stores	16,600	16,600	16,000	0	0.0%	0.3%	600	3.8%	3.8%	
42-445100	Grocery Stores	14,800	14,900	14,000	-100	-0.7%	0.8%	800	5.7%	3.5%	
42-452000	General Merchandise Stores	18,500	18,600	17,500	-100	-0.5%	-1.2%	1,000	5.7%	0.6%	
42-452200	Department Stores	3,900	4,000	3,700	-100	-2.5%	-9.0%	200	5.4%	0.4%	
42-452300	Other General Merchandise Stores	14,600	14,600	13,800	0	0.0%	1.2%	800	5.8%	2.2%	
43-000000	Transport., Wrhse, And Utilities	32,600	32,900	31,300	-300	-0.9%	-1.4%	1,300	4.2%	6.4%	
43-220000	Utilities	3,000	3,000	3,100	0	0.0%	1.4%	-100	-3.2%	0.0%	
43-400089	Transportation And Warehousing	29,600	29,900	28,200	-300	-1.0%	-1.7%	1,400	5.0%	7.3%	
43-484000	Truck Transportation	10,800	10,700	10,600	100	0.9%	-1.0%	200	1.9%	1.4%	
43-484100	General Freight Trucking	7,200	7,200	7,200	0	0.0%	-0.3%	0	0.0%	1.5%	
50-000000	Information	7,900	8,000	7,800	-100	-1.3%	-2.2%	100	1.3%	-1.9%	
50-517000	Telecommunications	2,100	2,100	2,100	0	0.0%	-0.8%	0	0.0%	-5.3%	
55-000000	Financial Activities	39,400	39,900	38,600	-500	-1.3%	0.1%	800	2.1%	3.3%	
55-520000	Finance And Insurance	29,000	29,500	28,400	-500	-1.7%	-0.1%	600	2.1%	2.3%	
55-522000	Credit Intermediation Activities	13,100	13,200	12,700	-100	-0.8%	-0.5%	400	3.1%	1.8%	
55-524000	Insurance Carriers Activities	12,900	13,100	12,600	-200	-1.5%	-0.3%	300	2.4%	1.9%	
55-530000	Real Estate And Rental And Leasing	10,400	10,400	10,200	0	0.0%	0.5%	200	2.0%	6.3%	
60-000000	Professional And Business Services	106,700	103,700	102,500	3,000	2.9%	0.5%	4,200	4.1%	3.2%	
60-540000	Prof., Scientific, Technical Services	49,200	49,200	45,900	0	0.0%	0.1%	3,300	7.2%	5.2%	
60-541300	Architectural, Engineering, Services	8,700	8,600	7,800	100	1.2%	1.8%	900	11.5%	5.4%	
60-541700	Scientific Research & Development	7,900	7,800	7,300	100	1.3%	0.0%	600	8.2%	4.4%	
60-550000	Mgmt. Of Companies & Enterprises	8,000	7,900	7,700	100	1.3%	-0.3%	300	3.9%	4.8%	
60-560000	Admin., Support, Waste Mgmt Serv.	49,500	46,600	48,900	2,900	6.2%	0.9%	600	1.2%	1.3%	
60-561000	Administrative, Support Services	45,100	42,200	44,600	2,900	6.9%	1.0%	500	1.1%	1.0%	
60-561300	Employment Services	15,300	14,500	13,700	800	5.5%	-2.7%	1,600	11.7%	-1.0%	
60-561400	Business Support Services	9,400	8,900	10,700	500	5.6%	-2.8%	-1,300	-12.1%	-3.0%	
60-561420	Telephone Call Centers	7,300	6,900	8,400	400	5.8%	-3.3%	-1,100	-13.1%	-3.2%	
60-561700	Services To Buildings And Dwellings	12,800	11,500	13,000	1,300	11.3%	9.7%	-200	-1.5%	4.2%	
65-000000	Education And Health Services	118,900	118,400	116,800	500	0.4%	-2.0%	2,100	1.8%	3.6%	
65-610000	Educational Services	14,100	14,300	13,900	-200	-1.4%	-6.7%	200	1.4%	4.4%	
65-620000	Health Care And Social Services	104,800	104,100	102,900	700	0.7%	-1.3%	1,900	1.8%	3.5%	
65-621000	Ambulatory Health Care	47,900	47,400	46,600	500	1.1%	-2.0%	1,300	2.8%	5.8%	
65-622000	Hospitals	25,400	25,400	25,200	0	0.0%	-0.5%	200	0.8%	2.3%	
65-622100	General Medical And Surgical	23,000	22,900	22,700	100	0.4%	-0.2%	300	1.3%	0.9%	
65-623000	Nursing & Residential Care Facilities	14,900	14,900	15,100	0	0.0%	-1.0%	-200	-1.3%	1.0%	
65-624000	Social Assistance	16,600	16,400	16,000	200	1.2%	-2.1%	600	3.8%	2.1%	
70-000000	Leisure And Hospitality	84,800	84,200	81,000	600	0.7%	-6.0%	3,800	4.7%	8.2%	
70-710000	Arts, Entertainment, Recreation	14,600	14,600	12,800	0	0.0%	-2.1%	1,800	14.1%	14.4%	
70-713000	Amusement Gambling, Recreation	12,100	12,300	11,000	-200	-1.6%	-4.6%	1,100	10.0%	15.9%	
70-713900	Other Amusement & Recreation Ind.	10,700	11,200	9,600	-500	-4.5%	-9.0%	1,100	11.5%	13.5%	
70-720000	Accommodation And Food Services	70,200	69,600	68,200	600	0.9%	-6.6%	2,000	2.9%	7.2%	
70-721000	Accommodations	9,900	9,900	9,000	0	0.0%	-10.5%	900	10.0%	9.1%	
70-722000	Food Service And Drinking Places	60,300	59,700	59,200	600	1.0%	-6.0%	1,100	1.9%	7.0%	
70-722511	Full Service Restaurants	24,500	24,000	23,900	500	2.1%	-10.0%	600	2.5%	13.9%	
70-722590	Limited Service Restaurants	31,400	31,600	30,900	-200	-0.6%	-2.0%	500	1.6%	5.7%	
80-000000	Other Services	26,800	26,900	25,800	-100	-0.4%	-2.5%	1,000	3.9%	2.0%	
80-811000	Repair And Maintenance	8,800	8,700	8,400	100	1.1%	-0.4%	400	4.8%	3.6%	
80-811100	Automotive Repair & Maintenance	6,300	6,300	6,100	0	0.0%	-0.6%	200	3.3%	3.8%	
90-000000	Total Government	129,800	128,300	126,000	1,500	1.2%	-0.6%	3,800	3.0%	0.6%	
90-910000	Federal Government	12,700	12,100	13,100	600	5.0%	2.2%	-400	-3.1%	1.4%	
90-940000	State And Local Government	117,100	116,200	112,900	900	0.8%	-0.9%	4,200	3.7%	0.5%	
90-920000	State Government	32,300	32,100	30,100	200	0.6%	-1.6%	2,200	7.3%	-0.4%	
90-921611	State Education	17,500	17,300	14,600	200	1.2%	-3.5%	2,900	19.9%	-1.3%	
90-929999	State Administration	14,800	14,800	15,500	0	0.0%	0.4%	-700	-4.5%	0.5%	
90-930000	Local Government	84,800	84,100	82,800	700	0.8%	-0.7%	2,000	2.4%	0.9%	
90-931611	Local Education	46,200	46,100	44,700	100	0.2%	-1.6%	1,500	3.4%	0.5%	
90-939999	Local Administration	38,600	38,000	38,100	600	1.6%	0.4%	500	1.3%	1.3%	

* = Average is based on the previous five years of experience.

BLS CES

PRELIMINARY AND FINAL ESTIMATE COMPARISON

March - 2022

NAICS	Category	Final	Preliminary	Change	%
00-000000	TOTAL NONFARM	805,100	805,200	(100)	0.0%
05-000000	TOTAL PRIVATE	676,800	676,600	200	0.0%
06-000000	GOODS PRODUCING	134,100	134,700	(600)	-0.4%
07-000000	SERVICE PROVIDING. (INC. GOV)	671,000	670,500	500	0.1%
08-000000	PRIVATE SERVICE PROVIDING	542,700	541,900	800	0.1%
10-000000	NATURAL RESOURCES	4,100	4,100	0	0.0%
20-000000	CONSTRUCTION	58,700	59,500	(800)	-1.3%
20-236000	CONSTRUCTION OF BUILDING	13,900	14,100	(200)	-1.4%
20-236100	RESIDENTIAL BUILDING CONST.	8,600	8,700	(100)	-1.1%
20-237000	HEAVY AND CIVIL CONST.	6,600	6,700	(100)	-1.5%
20-238000	SPECIALTY TRADE CONTRACTORS	38,200	38,700	(500)	-1.3%
20-238100	FOUNDTN, STRCTRE, BLDING CONTRACT	9,900	10,100	(200)	-2.0%
20-238200	BUILDING EQUIPMENT CONTRACTORS	14,200	14,300	(100)	-0.7%
20-238300	BUILDING FINISHING CONTRACTORS	7,700	7,800	(100)	-1.3%
20-238900	OTHER SPECIALTY TRADE CONTRACTORS	6,400	6,500	(100)	-1.5%
30-000000	MANUFACTURING	71,300	71,100	200	0.3%
31-000000	DURABLE GOODS	40,800	40,700	100	0.2%
31-334000	COMPUTER AND ELECT. MANUFACT.	10,300	10,300	0	0.0%
31-334100	COMPUTER AND PERIPH. MANUFACT.	1,600	1,600	0	0.0%
31-334400	SEMICONDUCTOR & OTHR ELECT. MANUF.	7,700	7,700	0	0.0%
32-000000	NONDURABLE GOODS	30,500	30,400	100	0.3%
32-311000	FOOD MANUFACTURING	19,700	19,600	100	0.5%
32-311400	FRUIT & VEGETABLE MANUFACTURING	7,100	7,000	100	1.4%
40-000000	TRADE, TRANSPORTATION, & UTILITIES	161,600	161,800	(200)	-0.1%
41-000000	WHOLESALE TRADE	34,300	34,300	0	0.0%
41-423000	MERCHANT WHLSALERS DUR. GDS	18,800	18,900	(100)	-0.5%
41-424000	MERCHANT WHLSALERS NONDUR. GDS	13,700	13,700	0	0.0%
42-000000	RETAIL TRADE	94,400	94,300	100	0.1%
42-441000	MOTOR VEHICLE AND PARTS DEALERS	14,400	14,400	0	0.0%
42-444000	BLDING MATERIALS & GARDEN SUPPLIES	10,300	10,300	0	0.0%
42-445000	FOOD AND BEVERAGE STORES	16,600	16,600	0	0.0%
42-445100	GROCERY STORES	14,900	14,700	200	1.4%
42-452000	GENERAL MERCHANDISE STORES	18,600	18,600	0	0.0%
42-452200	DEPARTMENT STORES	4,000	4,000	0	0.0%
42-452300	OTHER GENERAL MERCHANDISE STORES	14,600	14,600	0	0.0%
43-000000	TRANSPORT., WRHOUSE, AND UTILITIES	32,900	33,200	(300)	-0.9%
43-220000	UTILITIES	3,000	3,000	0	0.0%
43-400089	TRANSPORTATION AND WAREHOUSING	29,900	30,200	(300)	-1.0%
43-484000	TRUCK TRANSPORTATION	10,700	10,700	0	0.0%
43-484100	GENERAL FREIGHT TRUCKING	7,200	7,100	100	1.4%
50-000000	INFORMATION	8,000	8,000	0	0.0%
50-517000	TELECOMMUNICATIONS	2,100	2,100	0	0.0%
55-000000	FINANCIAL ACTIVITIES	39,900	40,000	(100)	-0.2%
55-520000	FINANCE AND INSURANCE	29,500	29,600	(100)	-0.3%
55-522000	CREDIT INTERMEDIATION ACTIVITIES	13,200	13,200	0	0.0%
55-524000	INSURANCE CARRIERS ACTIVITIES	13,100	13,200	(100)	-0.8%
55-530000	REAL ESTATE AND RENTAL AND LEASING	10,400	10,400	0	0.0%
60-000000	PROFESSIONAL AND BUSINESS SERVICES	103,700	103,300	400	0.4%
60-540000	PROF., SCIENTIFIC, TECHNICAL SERVICES	49,200	48,800	400	0.8%
60-541300	ARCHITECTURAL, ENGINEERING, SERVICES	8,600	8,500	100	1.2%
60-541700	SCIENTIFIC RESEARCH & DEVELOPMENT	7,800	7,700	100	1.3%
60-550000	MGMNT. OF COMPANIES & ENTERPRISES	7,900	7,900	0	0.0%
60-560000	ADMIN., SUPPORT, WASTE MGMNT SERV.	46,600	46,600	0	0.0%
60-561000	ADMINISTRATIVE, SUPPORT SERVICES	42,200	42,100	100	0.2%
60-561300	EMPLOYMENT SERVICES	14,500	14,500	0	0.0%
60-561400	BUSINESS SUPPORT SERVICES	8,900	9,000	(100)	-1.1%
60-561420	TELEPHONE CALL CENTERS	6,900	7,000	(100)	-1.4%
60-561700	SERVICES TO BUILDINGS AND DWELLINGS	11,500	11,500	0	0.0%
65-000000	EDUCATION AND HEALTH SERVICES	118,400	117,800	600	0.5%
65-610000	EDUCATIONAL SERVICES	14,300	14,300	0	0.0%
65-620000	HEALTH CARE AND SOCIAL SERVICES	104,100	103,500	600	0.6%
65-621000	AMBULATORY HEALTH CARE	47,400	47,100	300	0.6%
65-622000	HOSPITALS	25,400	25,400	0	0.0%
65-622100	GENERAL MEDICAL AND SURGICAL	22,900	22,900	0	0.0%
65-623000	NURSING & RESIDENTIAL CARE FACILITIES	14,900	14,800	100	0.7%
65-624000	SOCIAL ASSISTANCE	16,400	16,200	200	1.2%
70-000000	LEISURE AND HOSPITALITY	84,200	84,200	0	0.0%
70-710000	ARTS, ENTERTAINMENT, RECREATION	14,600	14,700	(100)	-0.7%
70-713000	AMUSEMENT GAMBLING, RECREATION	12,300	12,300	0	0.0%
70-713900	OTHER AMUSEMENT & RECREATION IND.	11,200	11,300	(100)	-0.9%
70-720000	ACCOMMODATION AND FOOD SERVICES	69,600	69,500	100	0.1%
70-721000	ACCOMMODATIONS	9,900	9,900	0	0.0%
70-722000	FOOD SERVICE AND DRINKING PLACES	59,700	59,600	100	0.2%
70-722511	FULL SERVICE RESTAURANTS	24,000	23,600	400	1.7%
70-722590	LIMITED SERVICE RESTAURANTS	31,600	31,300	300	1.0%
80-000000	OTHER SERVICES	26,900	26,800	100	0.4%
80-811000	REPAIR AND MAINTENANCE	8,700	8,700	0	0.0%
80-811100	AUTOMOTIVE REPAIR & MAINTENANCE	6,300	6,300	0	0.0%
90-000000	TOTAL GOVERNMENT	128,300	128,600	(300)	-0.2%
90-910000	FEDERAL GOVERNMENT	12,100	12,100	0	0.0%
90-940000	STATE AND LOCAL GOVERNMENT	116,200	116,500	(300)	-0.3%
90-920000	STATE GOVERNMENT	32,100	32,100	0	0.0%
90-921611	STATE EDUCATION	17,300	17,300	0	0.0%
90-929999	STATE ADMINISTRATION	14,800	14,800	0	0.0%
90-930000	LOCAL GOVERNMENT	84,100	84,400	(300)	-0.4%
90-931611	LOCAL EDUCATION	46,100	46,000	100	0.2%
90-939999	LOCAL ADMINISTRATION	38,000	38,400	(400)	-1.0%