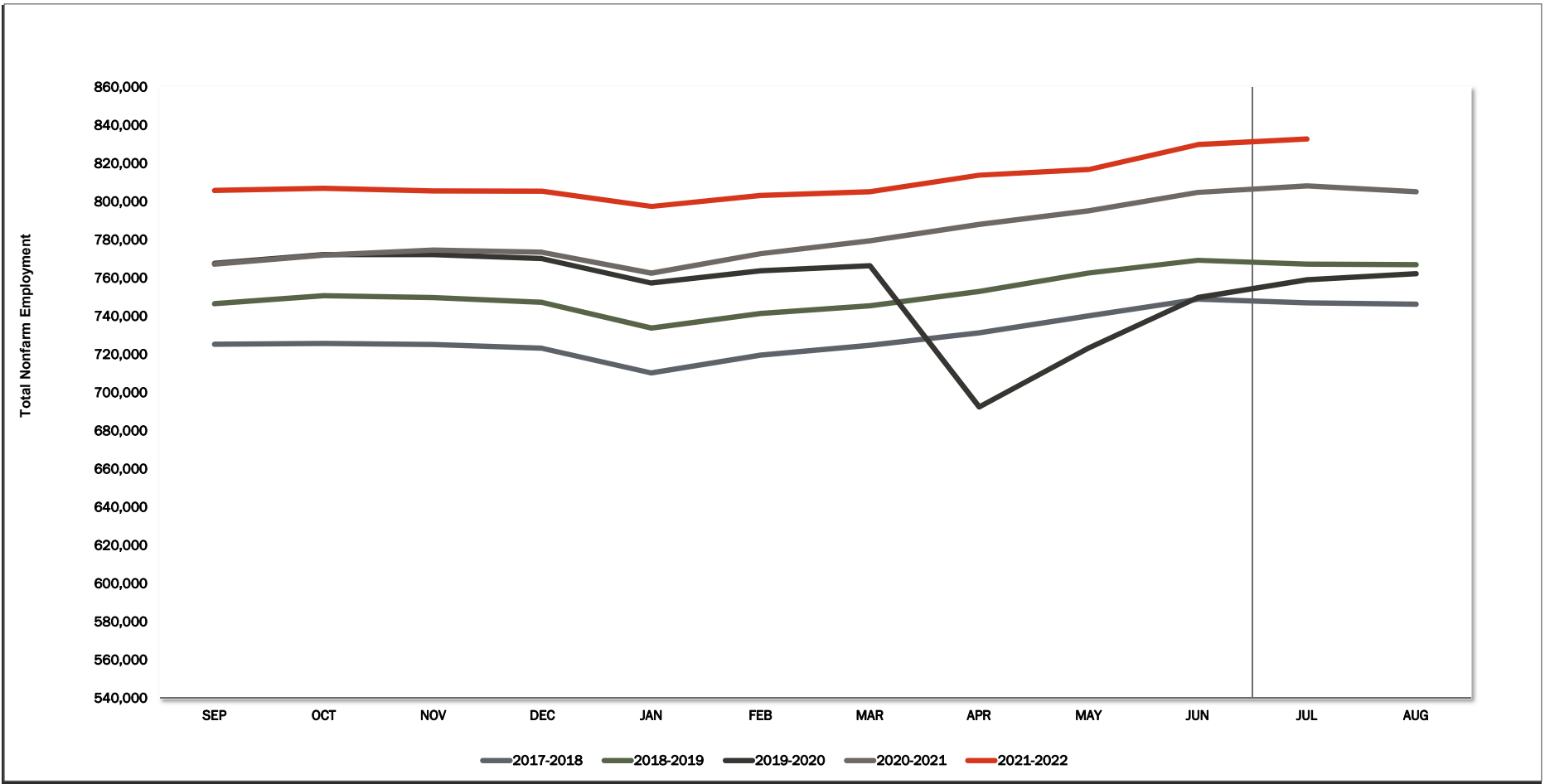
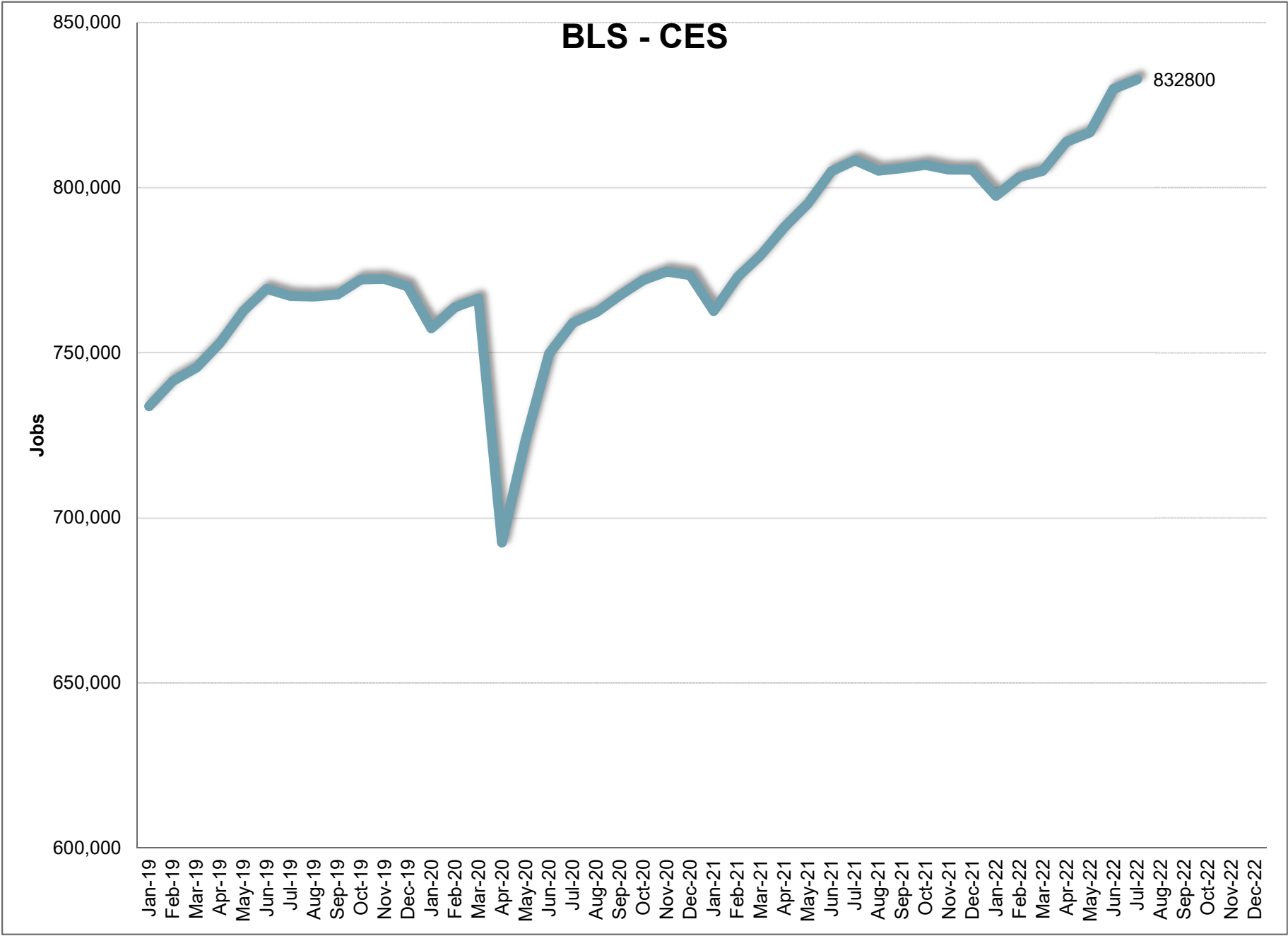


# BLS CES



	JAN	FEB	MAR	APR	MAY	JUN	JUL	AUG	SEP	OCT	NOV	DEC	12 Mth Avg
<b>2016</b>	666,700	675,300	682,400	687,800	694,500	700,800	702,800	701,100	706,700	705,800	705,200	701,600	694,200
<b>2017</b>	688,800	695,500	703,700	707,300	716,700	725,100	721,000	720,200	725,300	725,700	725,200	723,200	714,800
<b>2018</b>	710,300	719,600	724,700	731,200	740,100	748,900	747,000	746,200	746,600	750,700	749,700	747,300	738,500
<b>2019</b>	733,800	741,400	745,400	752,900	762,600	769,300	767,200	767,000	767,600	772,200	772,300	770,100	760,200
<b>2020</b>	757,400	763,800	766,400	692,500	723,300	749,700	759,000	762,200	767,300	772,000	774,600	773,500	755,100
<b>2021</b>	762,600	772,800	779,500	788,000	795,100	804,900	808,300	805,100	805,900	806,900	805,500	805,400	795,000
<b>2022</b>	<b>797,500</b>	<b>803,200</b>	<b>805,100</b>	<b>813,900</b>	<b>816,800</b>	<b>829,900</b>	<b>832,800</b>						
<b>Mnth-Mnth % Change</b>													
<b>2021</b>	<b>-1.4%</b>	<b>1.3%</b>	<b>0.9%</b>	<b>1.1%</b>	<b>0.9%</b>	<b>1.2%</b>	<b>0.4%</b>	<b>-0.4%</b>	<b>0.1%</b>	<b>0.1%</b>	<b>-0.2%</b>	<b>0.0%</b>	
<b>2022</b>	<b>-1.0%</b>	<b>0.7%</b>	<b>0.2%</b>	<b>1.1%</b>	<b>0.4%</b>	<b>1.6%</b>	<b>0.3%</b>						
<b>5-MTM Avg</b>	<b>-1.7%</b>	<b>1.1%</b>	<b>0.7%</b>	<b>-1.2%</b>	<b>1.8%</b>	<b>1.6%</b>	<b>0.1%</b>						
<b>Year-Year % Change</b>													
<b>2021</b>	<b>0.7%</b>	<b>1.2%</b>	<b>1.7%</b>	<b>13.8%</b>	<b>9.9%</b>	<b>7.4%</b>	<b>6.5%</b>	<b>5.6%</b>	<b>5.0%</b>	<b>4.5%</b>	<b>4.0%</b>	<b>4.1%</b>	<b>Avg</b>
<b>2022</b>	<b>4.6%</b>	<b>3.9%</b>	<b>3.3%</b>	<b>3.3%</b>	<b>2.7%</b>	<b>3.1%</b>	<b>3.0%</b>						<b>5.3%</b>
<b>5-YTY Avg</b>	<b>2.7%</b>	<b>2.7%</b>	<b>2.7%</b>	<b>3.0%</b>	<b>2.9%</b>	<b>2.9%</b>	<b>2.9%</b>						



**July 2022**

**Current Employment Statistics**

**Confidence Interval Bounds of Selected Month's Estimate**

Industry Title	Current Month	Estimated Change			Confidence Interval Bounds of Selected Month's Estimate					
		1 Month	3 Month	12 Month	1 Month		3 Month		12 Month	
					+	-	+	-	+	-
Total Nonfarm	832,800	2,900	18,900	32,000	7,305	-1,505	26,248	11,552	45,834	18,166
Total Private	709,100	8,500	25,400	31,300	12,849	4,151	32,651	18,149	44,939	17,661
Goods Producing	143,400	1,100	6,900	8,500	3,077	-877	10,187	3,613	14,715	2,285
Private Service Providing	565,700	7,400	18,500	22,800	11,272	3,528	24,963	12,037	34,942	10,658
Mining and Logging	4,600	100	400	200	279	-79	732	68	916	-516
Mining, Logging, and Construction	69,200	0	4,300	2,500	1,551	-1,551	6,825	1,775	7,091	-2,091
Construction	64,600	-100	3,900	2,300	1,441	-1,641	6,404	1,396	6,835	-2,235
Manufacturing	74,200	1,100	2,600	6,000	2,326	-126	4,704	496	10,188	1,812
Durable Goods	43,000	1,000	2,400	4,900	2,003	-3	4,104	696	8,218	1,582
Non-Durable Goods	31,200	100	200	1,100	804	-604	1,434	-1,034	3,656	-1,456
Trade, Transportation, and Utilities	166,600	1,200	3,800	10,400	2,850	-450	6,608	992	15,618	5,182
Wholesale Trade	35,600	-100	600	3,300	604	-804	1,765	-565	5,628	972
Retail Trade	96,900	1,000	2,000	2,200	2,145	-145	3,888	112	5,608	-1,208
Transportation and Utilities	34,100	300	1,200	4,900	1,257	-657	2,921	-521	8,091	1,709
Information	8,400	200	500	900	466	-66	974	26	1,946	-146
Financial Activities	39,600	100	200	-2,900	766	-566	1,348	-948	-444	-5,356
Professional and Business Services	109,800	1,500	4,300	8,000	3,316	-316	7,324	1,276	13,871	2,129
Professional, Scientific, and Technical Services	50,300	800	1,600	5,300	1,525	75	2,830	370	7,863	2,737
Management of Companies and Enterprises	8,200	100	200	600	245	-45	465	-65	1,177	23
Administrative and Support and Waste Managem	51,300	600	2,500	2,100	2,258	-1,058	5,249	-249	7,351	-3,151
Education and health services	120,400	2,400	1,200	6,300	4,052	748	3,870	-1,470	11,279	1,321
Educational Services	13,200	-300	-1,100	300	340	-940	52	-2,252	2,024	-1,424
Health Care and Social Assistance	107,200	2,700	2,300	6,000	4,223	1,177	4,708	-108	10,672	1,328
Leisure and Hospitality	95,300	2,300	10,000	1,300	4,475	125	13,693	6,307	8,074	-5,474
Arts, Entertainment, and Recreation	18,200	1,300	3,100	2,200	2,437	163	5,158	1,042	5,618	-1,218
Accommodation and Food Services	77,100	1,000	6,900	-900	2,854	-854	9,966	3,834	4,948	-6,748
Other Services	25,600	-300	-1,500	-1,200	703	-1,303	64	-3,064	1,611	-4,011

For information on Bureau of Labor Statistic confidence interval calculations, please visit:

[www.bls.gov/sae/790stderr.htm](http://www.bls.gov/sae/790stderr.htm)



# BLS CES

## PRELIMINARY AND FINAL ESTIMATE COMPARISON

June - 2022

NAICS	Category	Final	Preliminary	Change	%
00-000000	TOTAL NONFARM	829,900	829,900	-	0.0%
05-000000	TOTAL PRIVATE	700,600	700,700	(100)	0.0%
06-000000	GOODS PRODUCING	142,300	142,000	300	0.2%
07-000000	SERVICE PROVIDING, (INC. GOV)	687,600	687,900	(300)	0.0%
08-000000	PRIVATE SERVICE PROVIDING	558,300	558,700	(400)	-0.1%
10-000000	NATURAL RESOURCES	4,500	4,500	0	0.0%
20-000000	CONSTRUCTION	64,700	64,500	200	0.3%
20-236000	CONSTRUCTION OF BUILDING	15,100	15,100	0	0.0%
20-236100	RESIDENTIAL BUILDING CONST.	9,400	9,300	100	1.1%
20-237000	HEAVY AND CIVIL CONST.	7,700	7,600	100	1.3%
20-238000	SPECIALTY TRADE CONTRACTORS	41,900	41,800	100	0.2%
20-238100	FOUNDTN, STRCTRE, BLDING CONTRACT	10,800	10,700	100	0.9%
20-238200	BUILDING EQUIPMENT CONTRACTORS	15,400	15,400	0	0.0%
20-238300	BUILDING FINISHING CONTRACTORS	8,300	8,300	0	0.0%
20-238900	OTHER SPECIALTY TRADE CONTRACTORS	7,400	7,400	0	0.0%
30-000000	MANUFACTURING	73,100	73,000	100	0.1%
31-000000	DURABLE GOODS	42,000	41,900	100	0.2%
31-334000	COMPUTER AND ELECT. MANUFACT.	10,300	10,300	0	0.0%
31-334100	COMPUTER AND PERIPH. MANUFACT.	1,600	1,600	0	0.0%
31-334400	SEMICONDUCTOR & OTHR ELECT. MANUF.	7,700	7,700	0	0.0%
32-000000	NONDURABLE GOODS	31,100	31,100	0	0.0%
32-311000	FOOD MANUFACTURING	20,200	20,300	(100)	-0.5%
32-311400	FRUIT & VEGETABLE MANUFACTURING	7,200	7,200	0	0.0%
40-000000	TRADE, TRANSPORTATION, & UTILITIES	165,400	165,300	100	0.1%
41-000000	WHOLESALE TRADE	35,700	35,600	100	0.3%
41-423000	MERCHANT WHLSALERS DUR. GDS	19,300	19,100	200	1.0%
41-424000	MERCHANT WHLSALERS NONDUR. GDS	13,900	13,900	0	0.0%
42-000000	RETAIL TRADE	95,900	96,000	(100)	-0.1%
42-441000	MOTOR VEHICLE AND PARTS DEALERS	14,700	14,700	0	0.0%
42-444000	BLDING MATERIALS & GARDEN SUPPLIES	10,600	10,700	(100)	-0.9%
42-445000	FOOD AND BEVERAGE STORES	16,700	16,700	0	0.0%
42-445100	GROCERY STORES	14,900	14,900	0	0.0%
42-452000	GENERAL MERCHANDISE STORES	18,200	18,200	0	0.0%
42-452200	DEPARTMENT STORES	3,900	3,900	0	0.0%
42-452300	OTHER GENERAL MERCHANDISE STORES	14,300	14,300	0	0.0%
43-000000	TRANSPORT., WRHOUSE, AND UTILITIES	33,800	33,700	100	0.3%
43-220000	UTILITIES	3,100	3,100	0	0.0%
43-400089	TRANSPORTATION AND WAREHOUSING	30,700	30,600	100	0.3%
43-484000	TRUCK TRANSPORTATION	11,000	11,000	0	0.0%
43-484100	GENERAL FREIGHT TRUCKING	7,400	7,400	0	0.0%
50-000000	INFORMATION	8,200	8,200	0	0.0%
50-517000	TELECOMMUNICATIONS	2,100	2,100	0	0.0%
55-000000	FINANCIAL ACTIVITIES	39,500	39,900	(400)	-1.0%
55-520000	FINANCE AND INSURANCE	29,000	29,300	(300)	-1.0%
55-522000	CREDIT INTERMEDIATION ACTIVITIES	12,900	13,000	(100)	-0.8%
55-524000	INSURANCE CARRIERS ACTIVITIES	12,900	13,000	(100)	-0.8%
55-530000	REAL ESTATE AND RENTAL AND LEASING	10,500	10,600	(100)	-0.9%
60-000000	PROFESSIONAL AND BUSINESS SERVICES	108,300	108,400	(100)	-0.1%
60-540000	PROF., SCIENTIFIC, TECHNICAL SERVICES	49,500	49,700	(200)	-0.4%
60-541300	ARCHITECTURAL, ENGINEERING, SERVICES	9,000	9,000	0	0.0%
60-541700	SCIENTIFIC RESEARCH & DEVELOPMENT	8,100	8,100	0	0.0%
60-550000	MGMNT. OF COMPANIES & ENTERPRISES	8,100	8,000	100	1.3%
60-560000	ADMIN., SUPPORT, WASTE MGMNT SERV.	50,700	50,700	0	0.0%
60-561000	ADMINISTRATIVE, SUPPORT SERVICES	46,000	46,000	0	0.0%
60-561300	EMPLOYMENT SERVICES	15,100	15,200	(100)	-0.7%
60-561400	BUSINESS SUPPORT SERVICES	9,200	9,200	0	0.0%
60-561420	TELEPHONE CALL CENTERS	7,100	7,100	0	0.0%
60-561700	SERVICES TO BUILDINGS AND DWELLINGS	13,400	13,300	100	0.8%
65-000000	EDUCATION AND HEALTH SERVICES	118,000	118,100	(100)	-0.1%
65-610000	EDUCATIONAL SERVICES	13,500	13,600	(100)	-0.7%
65-620000	HEALTH CARE AND SOCIAL SERVICES	104,500	104,500	0	0.0%
65-621000	AMBULATORY HEALTH CARE	47,200	47,200	0	0.0%
65-622000	HOSPITALS	25,600	25,600	0	0.0%
65-622100	GENERAL MEDICAL AND SURGICAL	23,100	23,000	100	0.4%
65-623000	NURSING & RESIDENTIAL CARE FACILITIES	15,000	15,000	0	0.0%
65-624000	SOCIAL ASSISTANCE	16,700	16,700	0	0.0%
70-000000	LEISURE AND HOSPITALITY	93,000	92,700	300	0.3%
70-710000	ARTS, ENTERTAINMENT, RECREATION	16,900	16,500	400	2.4%
70-713000	AMUSEMENT GAMBLING, RECREATION	14,700	14,200	500	3.5%
70-713900	OTHER AMUSEMENT & RECREATION IND.	12,800	12,400	400	3.2%
70-720000	ACCOMMODATION AND FOOD SERVICES	76,100	76,200	(100)	-0.1%
70-721000	ACCOMMODATIONS	11,700	11,700	0	0.0%
70-722000	FOOD SERVICE AND DRINKING PLACES	64,400	64,500	(100)	-0.2%
70-722511	FULL SERVICE RESTAURANTS	27,200	27,100	100	0.4%
70-722590	LIMITED SERVICE RESTAURANTS	31,800	31,700	100	0.3%
80-000000	OTHER SERVICES	25,900	26,100	(200)	-0.8%
80-811000	REPAIR AND MAINTENANCE	8,700	8,700	0	0.0%
80-811100	AUTOMOTIVE REPAIR & MAINTENANCE	6,300	6,300	0	0.0%
90-000000	TOTAL GOVERNMENT	129,300	129,200	100	0.1%
90-910000	FEDERAL GOVERNMENT	13,900	13,900	0	0.0%
90-940000	STATE AND LOCAL GOVERNMENT	115,400	115,300	100	0.1%
90-920000	STATE GOVERNMENT	30,200	30,200	0	0.0%
90-921611	STATE EDUCATION	14,900	14,900	0	0.0%
90-929999	STATE ADMINISTRATION	15,300	15,300	0	0.0%
90-930000	LOCAL GOVERNMENT	85,200	85,100	100	0.1%
90-931611	LOCAL EDUCATION	45,300	45,300	0	0.0%
90-939999	LOCAL ADMINISTRATION	39,900	39,800	100	0.3%