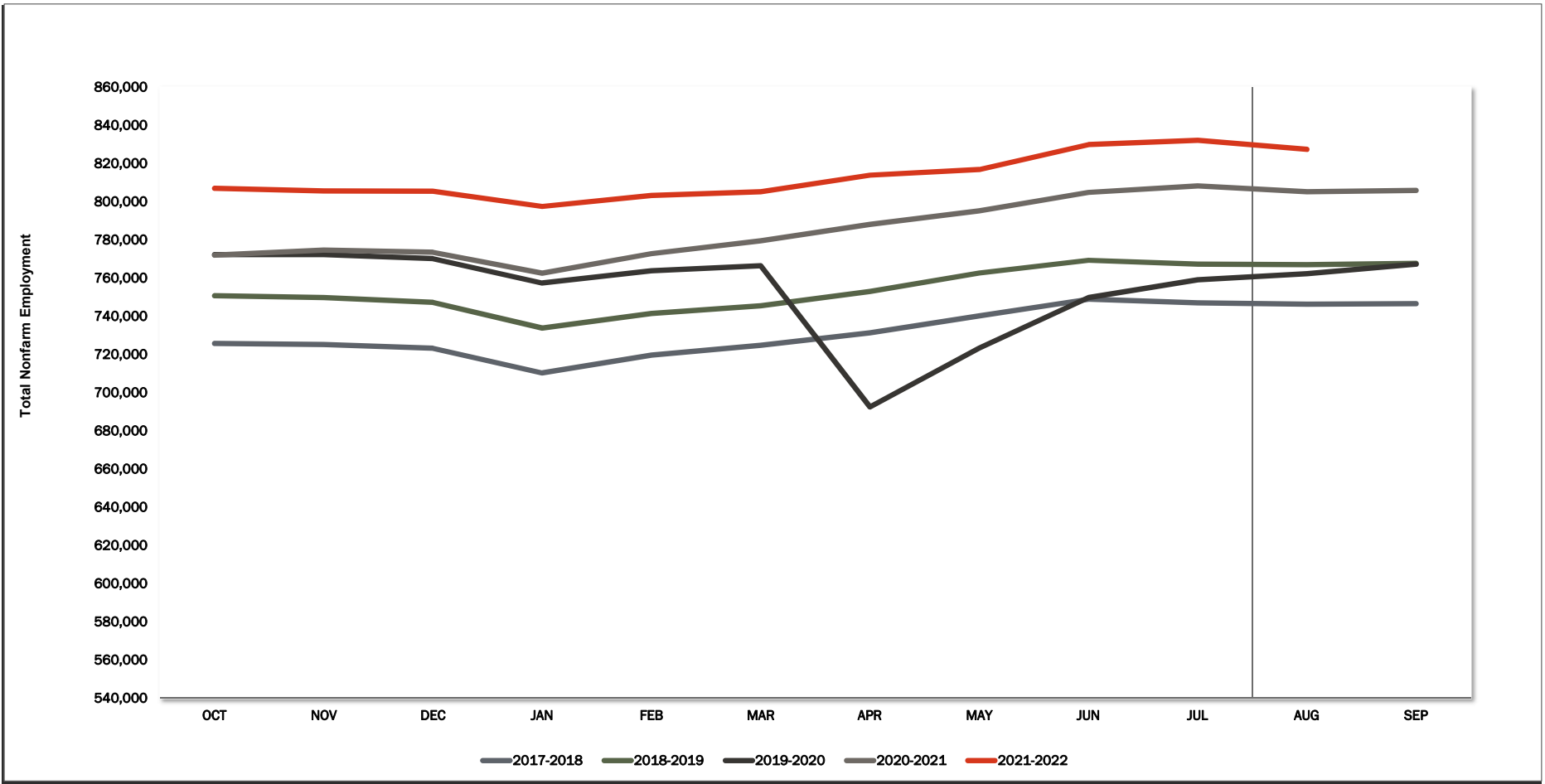
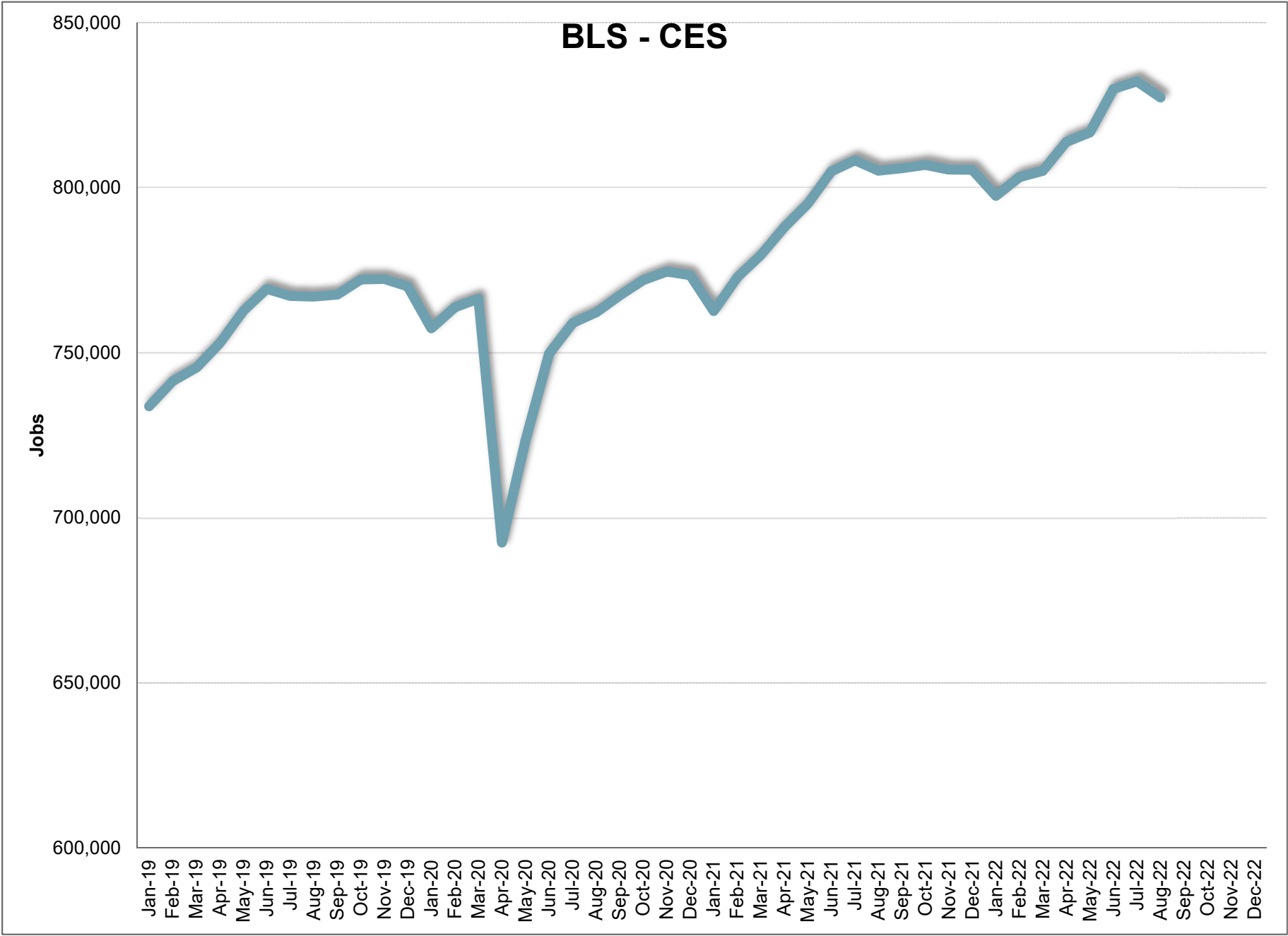


BLS CES



	JAN	FEB	MAR	APR	MAY	JUN	JUL	AUG	SEP	OCT	NOV	DEC	12 Mth Avg
2016	666,700	675,300	682,400	687,800	694,500	700,800	702,800	701,100	706,700	705,800	705,200	701,600	694,200
2017	688,800	695,500	703,700	707,300	716,700	725,100	721,000	720,200	725,300	725,700	725,200	723,200	714,800
2018	710,300	719,600	724,700	731,200	740,100	748,900	747,000	746,200	746,600	750,700	749,700	747,300	738,500
2019	733,800	741,400	745,400	752,900	762,600	769,300	767,200	767,000	767,600	772,200	772,300	770,100	760,200
2020	757,400	763,800	766,400	692,500	723,300	749,700	759,000	762,200	767,300	772,000	774,600	773,500	755,100
2021	762,600	772,800	779,500	788,000	795,100	804,900	808,300	805,100	805,900	806,900	805,500	805,400	795,000
2022	797,500	803,200	805,100	813,900	816,800	829,900	832,200	827,300					
Mnth-Mnth % Change													
2021	-1.4%	1.3%	0.9%	1.1%	0.9%	1.2%	0.4%	-0.4%	0.1%	0.1%	-0.2%	0.0%	
2022	-1.0%	0.7%	0.2%	1.1%	0.4%	1.6%	0.3%	-0.6%					
5-MTM Avg	-1.7%	1.1%	0.7%	-1.2%	1.8%	1.6%	0.1%	0.0%					
Year-Year % Change													
2021	0.7%	1.2%	1.7%	13.8%	9.9%	7.4%	6.5%	5.6%	5.0%	4.5%	4.0%	4.1%	Avg
2022	4.6%	3.9%	3.3%	3.3%	2.7%	3.1%	3.0%	2.8%					5.3%
5-YTY Avg	2.7%	2.7%	2.7%	3.0%	2.9%	2.9%	2.9%	2.8%					



August 2022

Current Employment Statistics

Confidence Interval Bounds of Selected Month's Estimate

Industry Title	Current Month	Estimated Change			Confidence Interval Bounds of Selected Month's Estimate					
		1 Month	3 Month	12 Month	1 Month		3 Month		12 Month	
					+	-	+	-	+	-
Total Nonfarm	827,300	-4,900	10,500	33,100	-495	-9,305	17,848	3,152	46,934	19,266
Total Private	704,300	-3,900	17,100	32,400	449	-8,249	24,351	9,849	46,039	18,761
Goods Producing	143,400	100	5,700	9,300	2,077	-1,877	8,987	2,413	15,515	3,085
Private Service Providing	560,900	-4,000	11,400	23,100	-128	-7,872	17,863	4,937	35,242	10,958
Mining and Logging	4,700	0	200	300	179	-179	532	-132	1,016	-416
Mining, Logging, and Construction	69,400	400	3,600	3,400	1,951	-1,151	6,125	1,075	7,991	-1,191
Construction	64,700	400	3,400	3,100	1,941	-1,141	5,904	896	7,635	-1,435
Manufacturing	74,000	-300	2,100	5,900	926	-1,526	4,204	-4	10,088	1,712
Durable Goods	42,900	0	1,400	4,600	1,003	-1,003	3,104	-304	7,918	1,282
Non-Durable Goods	31,100	-300	700	1,300	404	-1,004	1,934	-534	3,856	-1,256
Trade, Transportation, and Utilities	167,600	1,100	4,200	12,400	2,750	-550	7,008	1,392	17,618	7,182
Wholesale Trade	35,700	200	500	3,500	904	-504	1,665	-665	5,828	1,172
Retail Trade	96,400	-500	1,400	2,300	645	-1,645	3,288	-488	5,708	-1,108
Transportation and Utilities	35,500	1,400	2,300	6,600	2,357	443	4,021	579	9,791	3,409
Information	8,300	-100	100	700	166	-366	574	-374	1,746	-346
Financial Activities	39,800	200	700	-2,300	866	-466	1,848	-448	156	-4,756
Professional and Business Services	109,700	200	2,900	8,100	2,016	-1,616	5,924	-124	13,971	2,229
Professional, Scientific, and Technical Services	49,800	-500	800	4,900	225	-1,225	2,030	-430	7,463	2,337
Management of Companies and Enterprises	8,200	0	100	600	145	-145	365	-165	1,177	23
Administrative and Support and Waste Managem	51,700	700	2,000	2,600	2,358	-958	4,749	-749	7,851	-2,651
Education and health services	116,900	-3,200	-1,500	5,300	-1,548	-4,852	1,170	-4,170	10,279	321
Educational Services	11,400	-1,900	-2,700	400	-1,260	-2,540	-1,549	-3,852	2,124	-1,324
Health Care and Social Assistance	105,500	-1,300	1,200	4,900	223	-2,823	3,608	-1,208	9,572	228
Leisure and Hospitality	93,100	-2,100	6,100	100	75	-4,275	9,793	2,407	6,874	-6,674
Arts, Entertainment, and Recreation	17,600	-700	3,000	1,500	437	-1,837	5,058	942	4,918	-1,918
Accommodation and Food Services	75,500	-1,400	3,100	-1,400	454	-3,254	6,166	34	4,448	-7,248
Other Services	25,500	-100	-1,100	-1,200	903	-1,103	464	-2,664	1,611	-4,011

For information on Bureau of Labor Statistic confidence interval calculations, please visit:

www.bls.gov/sae/790stderr.htm

BLS CES

August		2022									
NAICS	Category	AUG	JUL	AUG-2021	Change	%	Avg*	Yr-to-Yr Change	%	Avg*	
00-000000	Total Nonfarm	827,300	832,200	805,100	-4,900	-0.6%	0.0%	22,200	2.8%	2.8%	
05-000000	Total Private	704,300	708,200	686,600	-3,900	-0.6%	0.0%	17,700	2.6%	3.2%	
06-000000	Goods Producing	143,400	143,300	138,200	100	0.1%	0.2%	5,200	3.8%	3.9%	
07-000000	Service Providing, (Inc. Gov)	683,900	688,900	666,900	-5,000	-0.7%	-0.1%	17,000	2.5%	2.6%	
08-000000	Private Service Providing	560,900	564,900	548,400	-4,000	-0.7%	-0.1%	12,500	2.3%	3.1%	
10-000000	Natural Resources	4,700	4,700	4,400	0	0.0%	-0.5%	300	6.8%	1.2%	
20-000000	Construction	64,700	64,300	63,300	400	0.6%	0.5%	1,400	2.2%	7.2%	
20-236000	Construction of Buildings	14,900	14,900	15,000	0	0.0%	0.5%	-100	-0.7%	8.1%	
20-236100	Residential Building Const.	9,300	9,300	9,300	0	0.0%	0.0%	0	0.0%	9.9%	
20-237000	Heavy And Civil Const.	7,600	7,600	7,400	0	0.0%	1.0%	200	2.7%	6.6%	
20-238000	Specialty Trade Contractors	42,200	41,800	40,900	400	1.0%	0.3%	1,300	3.2%	7.1%	
20-238100	Foundtn, Strctre, Bldng Contract	10,800	10,800	10,500	0	0.0%	0.0%	300	2.9%	8.2%	
20-238200	Building Equipment Contractors	15,700	15,300	14,700	400	2.6%	0.6%	1,000	6.8%	6.4%	
20-238300	Building Finishing Contractors	8,300	8,300	8,200	0	0.0%	0.3%	100	1.2%	6.8%	
20-238900	Other Specialty Trade Contractors	7,400	7,400	7,500	0	0.0%	0.3%	-100	-1.3%	7.2%	
30-000000	Manufacturing	74,000	74,300	70,500	-300	-0.4%	0.0%	3,500	5.0%	1.6%	
31-000000	Durable Goods	42,900	42,900	40,700	0	0.0%	-0.1%	2,200	5.4%	1.3%	
31-334000	Computer And Elect. Manufact.	10,400	10,400	10,800	0	0.0%	-0.8%	-400	-3.7%	-2.8%	
31-334100	Computer And Periph. Manufact.	1,600	1,700	1,700	-100	-5.9%	0.0%	-100	-5.9%	-4.7%	
31-334400	Semiconductor & Othr Elect. Manuf.	7,700	7,700	8,100	0	0.0%	-0.7%	-400	-4.9%	-2.7%	
32-000000	Nondurable Goods	31,100	31,400	29,800	-300	-1.0%	0.1%	1,300	4.4%	1.9%	
32-311000	Food Manufacturing	20,500	20,300	19,000	200	1.0%	-0.1%	1,500	7.9%	1.8%	
32-311400	Fruit & Vegetable Manufacturing	7,300	7,300	6,800	0	0.0%	-1.1%	500	7.4%	-0.8%	
40-000000	Trade, Transportation, & Utilities	167,600	166,500	160,200	1,100	0.7%	0.7%	7,400	4.6%	3.0%	
41-000000	Wholesale Trade	35,700	35,500	33,600	200	0.6%	0.4%	2,100	6.3%	3.4%	
41-423000	Merchant Whlsalers Dur. Gds	19,400	19,300	18,300	100	0.5%	0.3%	1,100	6.0%	4.4%	
41-424000	Merchant Whlsalers Nondur. Gds	13,800	13,800	13,500	0	0.0%	0.8%	300	2.2%	2.2%	
42-000000	Retail Trade	96,400	96,900	94,100	-500	-0.5%	0.3%	2,300	2.4%	1.7%	
42-441000	Motor Vehicle And Parts Dealers	14,700	14,800	14,300	-100	-0.7%	0.3%	400	2.8%	1.2%	
42-444000	Bldng Materials & Garden Supplies	10,300	10,400	10,400	-100	-1.0%	-2.4%	-100	-1.0%	4.4%	
42-445000	Food And Beverage Stores	16,700	16,800	16,200	-100	-0.6%	0.1%	500	3.1%	3.4%	
42-445100	Grocery Stores	14,900	14,800	14,300	100	0.7%	0.3%	600	4.2%	3.3%	
42-452000	General Merchandise Stores	18,000	18,100	17,800	-100	-0.6%	0.3%	200	1.1%	0.0%	
42-452200	Department Stores	3,800	3,900	3,900	-100	-2.6%	1.0%	-100	-2.6%	-3.0%	
42-452300	Other General Merchandise Stores	14,200	14,200	13,900	0	0.0%	0.2%	300	2.2%	1.2%	
43-000000	Transport., Wrhse, And Utilities	35,500	34,100	32,500	1,400	4.1%	2.4%	3,000	9.2%	6.9%	
43-220000	Utilities	3,100	3,100	3,100	0	0.0%	0.0%	0	0.0%	0.7%	
43-400089	Transportation And Warehousing	32,400	31,000	29,400	1,400	4.5%	2.8%	3,000	10.2%	7.7%	
43-484000	Truck Transportation	11,100	11,000	10,800	100	0.9%	0.6%	300	2.8%	1.4%	
43-484100	General Freight Trucking	7,400	7,400	7,300	0	0.0%	0.3%	100	1.4%	1.7%	
50-000000	Information	8,300	8,400	8,400	-100	-1.2%	-0.5%	-100	-1.2%	-0.9%	
50-517000	Telecommunications	2,100	2,200	2,200	-100	-4.5%	-2.6%	-100	-4.5%	-5.0%	
55-000000	Financial Activities	39,800	39,600	40,100	200	0.5%	-0.2%	-300	-0.7%	3.4%	
55-520000	Finance And Insurance	29,100	28,900	29,000	200	0.7%	0.2%	100	0.3%	2.4%	
55-522000	Credit Intermediation Activities	12,900	12,900	13,100	0	0.0%	0.0%	-200	-1.5%	2.0%	
55-524000	Insurance Carriers Activities	12,900	12,900	12,800	0	0.0%	0.0%	100	0.8%	1.8%	
55-530000	Real Estate And Rental And Leasing	10,700	10,700	11,100	0	0.0%	-1.3%	-400	-3.6%	6.3%	
60-000000	Professional And Business Services	109,700	109,500	106,700	200	0.2%	0.2%	3,000	2.8%	3.3%	
60-540000	Prof., Scientific, Technical Services	49,800	50,300	47,100	-500	-1.0%	0.2%	2,700	5.7%	5.6%	
60-541300	Architectural, Engineering, Services	9,200	9,200	8,200	0	0.0%	0.0%	1,000	12.2%	5.8%	
60-541700	Scientific Research & Development	8,300	8,300	7,600	0	0.0%	0.3%	700	9.2%	4.2%	
60-550000	Mgmt. Of Companies & Enterprises	8,200	8,200	7,700	0	0.0%	-0.4%	500	6.5%	4.4%	
60-560000	Admin., Support, Waste Mgmt Serv.	51,700	51,000	51,900	700	1.4%	0.3%	-200	-0.4%	1.3%	
60-561000	Administrative, Support Services	47,200	46,300	47,400	900	1.9%	0.3%	-200	-0.4%	1.0%	
60-561300	Employment Services	15,200	15,100	15,500	100	0.7%	1.9%	-300	-1.9%	-0.8%	
60-561400	Business Support Services	9,100	9,100	10,000	0	0.0%	-0.5%	-900	-9.0%	-3.6%	
60-561420	Telephone Call Centers	7,000	7,000	7,800	0	0.0%	-0.2%	-800	-10.3%	-4.0%	
60-561700	Services To Buildings And Dwellings	13,500	13,300	14,600	200	1.5%	-0.9%	-1,100	-7.5%	4.9%	
65-000000	Education And Health Services	116,900	120,100	114,500	-3,200	-2.7%	-1.5%	2,400	2.1%	3.4%	
65-610000	Educational Services	11,400	13,300	11,400	-1,900	-14.3%	-15.7%	0	0.0%	6.4%	
65-620000	Health Care And Social Services	105,500	106,800	103,100	-1,300	-1.2%	0.2%	2,400	2.3%	3.1%	
65-621000	Ambulatory Health Care	47,600	48,500	46,800	-900	-1.9%	-0.1%	800	1.7%	4.4%	
65-622000	Hospitals	25,800	26,000	25,400	-200	-0.8%	0.1%	400	1.6%	2.2%	
65-622100	General Medical And Surgical	23,200	23,400	22,900	-200	-0.9%	-0.4%	300	1.3%	1.0%	
65-623000	Nursing & Residential Care Facilities	15,200	15,300	14,700	-100	-0.7%	-0.4%	500	3.4%	0.2%	
65-624000	Social Assistance	16,900	17,000	16,200	-100	-0.6%	0.0%	700	4.3%	1.7%	
70-000000	Leisure And Hospitality	93,100	95,200	91,600	-2,100	-2.2%	0.3%	1,500	1.6%	3.4%	
70-710000	Arts, Entertainment, Recreation	17,600	18,300	15,700	-700	-3.8%	-1.2%	1,900	12.1%	5.0%	
70-713000	Amusement Gambling, Recreation	15,000	15,500	13,500	-500	-3.2%	-1.4%	1,500	11.1%	5.1%	
70-713900	Other Amusement & Recreation Ind.	13,000	13,500	11,400	-500	-3.7%	-0.9%	1,600	14.0%	5.2%	
70-720000	Accommodation And Food Services	75,500	76,900	75,900	-1,400	-1.8%	0.6%	-400	-0.5%	3.1%	
70-721000	Accommodations	12,100	12,300	11,500	-200	-1.6%	0.5%	600	5.2%	2.0%	
70-722000	Food Service And Drinking Places	63,400	64,600	64,400	-1,200	-1.9%	0.6%	-1,000	-1.6%	3.3%	
70-722511	Full Service Restaurants	27,100	27,200	26,200	-100	-0.4%	0.5%	900	3.4%	0.8%	
70-722590	Limited Service Restaurants	30,600	31,400	33,100	-800	-2.5%	0.2%	-2,500	-7.6%	5.4%	
80-000000	Other Services	25,500	25,600	26,900	-100	-0.4%	0.0%	-1,400	-5.2%	1.5%	
80-811000	Repair And Maintenance	8,600	8,700	8,800	-100	-1.1%	0.3%	-200	-2.3%	3.5%	
80-811100	Automotive Repair & Maintenance	6,300	6,300	6,400	0	0.0%	0.3%	-100	-1.6%	3.9%	
90-000000	Total Government	123,000	124,000	118,500	-1,000	-0.8%	-0.2%	4,500	3.8%	0.7%	
90-910000	Federal Government	14,100	14,200	14,100	-100	-0.7%	-1.1%	0	0.0%	0.4%	
90-940000	State And Local Government	108,900	109,800	104,400	-900	-0.8%	-0.1%	4,500	4.3%	0.8%	
90-920000	State Government	30,200	30,100	27,600	100	0.3%	0.4%	2,600	9.4%	0.2%	
90-921611	State Education	14,800	14,800	11,900	0	0.0%	0.6%	2,900	24.4%	0.3%	
90-929999	State Administration	15,400	15,300	15,700	100	0.7%	0.1%	-300	-1.9%	0.1%	
90-930000	Local Government	78,700	79,700	76,800	-1,000	-1.3%	-0.3%	1,900	2.5%	1.0%	
90-931611	Local Education	38,800	39,600	37,500	-800	-2.0%	-0.1%	1,300	3.5%	1.3%	
90-939999	Local Administration	39,900	40,100	39,300	-200	-0.5%	-0.5%	600	1.5%	0.6%	

* = Average is based on the previous five years of experience.

BLS CES

PRELIMINARY AND FINAL ESTIMATE COMPARISON

July - 2022

NAICS	Category	Final	Preliminary	Change	%
00-000000	TOTAL NONFARM	832,200	832,800	(600)	-0.1%
05-000000	TOTAL PRIVATE	708,200	709,100	(900)	-0.1%
06-000000	GOODS PRODUCING	143,300	143,400	(100)	-0.1%
07-000000	SERVICE PROVIDING, (INC. GOV)	688,900	689,400	(500)	-0.1%
08-000000	PRIVATE SERVICE PROVIDING	564,900	565,700	(800)	-0.1%
10-000000	NATURAL RESOURCES	4,700	4,600	100	2.2%
20-000000	CONSTRUCTION	64,300	64,600	(300)	-0.5%
20-236000	CONSTRUCTION OF BUILDING	14,900	15,100	(200)	-1.3%
20-236100	RESIDENTIAL BUILDING CONST.	9,300	9,300	0	0.0%
20-237000	HEAVY AND CIVIL CONST.	7,600	7,700	(100)	-1.3%
20-238000	SPECIALTY TRADE CONTRACTORS	41,800	41,800	0	0.0%
20-238100	FOUNDTN, STRCTRE, BLDING CONTRACT	10,800	10,800	0	0.0%
20-238200	BUILDING EQUIPMENT CONTRACTORS	15,300	15,300	0	0.0%
20-238300	BUILDING FINISHING CONTRACTORS	8,300	8,300	0	0.0%
20-238900	OTHER SPECIALTY TRADE CONTRACTORS	7,400	7,400	0	0.0%
30-000000	MANUFACTURING	74,300	74,200	100	0.1%
31-000000	DURABLE GOODS	42,900	43,000	(100)	-0.2%
31-334000	COMPUTER AND ELECT. MANUFACT.	10,400	10,400	0	0.0%
31-334100	COMPUTER AND PERIPH. MANUFACT.	1,700	1,700	0	0.0%
31-334400	SEMICONDUCTOR & OTHR ELECT. MANUF.	7,700	7,700	0	0.0%
32-000000	NONDURABLE GOODS	31,400	31,200	200	0.6%
32-311000	FOOD MANUFACTURING	20,300	20,300	0	0.0%
32-311400	FRUIT & VEGETABLE MANUFACTURING	7,300	7,200	100	1.4%
40-000000	TRADE, TRANSPORTATION, & UTILITIES	166,500	166,600	(100)	-0.1%
41-000000	WHOLESALE TRADE	35,500	35,600	(100)	-0.3%
41-423000	MERCHANT WHLSALERS DUR. GDS	19,300	19,500	(200)	-1.0%
41-424000	MERCHANT WHLSALERS NONDUR. GDS	13,800	13,800	0	0.0%
42-000000	RETAIL TRADE	96,900	96,900	0	0.0%
42-441000	MOTOR VEHICLE AND PARTS DEALERS	14,800	14,800	0	0.0%
42-444000	BLDING MATERIALS & GARDEN SUPPLIES	10,400	10,500	(100)	-1.0%
42-445000	FOOD AND BEVERAGE STORES	16,800	16,800	0	0.0%
42-445100	GROCERY STORES	14,800	14,800	0	0.0%
42-452000	GENERAL MERCHANDISE STORES	18,100	18,200	(100)	-0.5%
42-452200	DEPARTMENT STORES	3,900	3,900	0	0.0%
42-452300	OTHER GENERAL MERCHANDISE STORES	14,200	14,300	(100)	-0.7%
43-000000	TRANSPORT., WRHOUSE, AND UTILITIES	34,100	34,100	0	0.0%
43-220000	UTILITIES	3,100	3,100	0	0.0%
43-400089	TRANSPORTATION AND WAREHOUSING	31,000	31,000	0	0.0%
43-484000	TRUCK TRANSPORTATION	11,000	10,900	100	0.9%
43-484100	GENERAL FREIGHT TRUCKING	7,400	7,300	100	1.4%
50-000000	INFORMATION	8,400	8,400	0	0.0%
50-517000	TELECOMMUNICATIONS	2,200	2,200	0	0.0%
55-000000	FINANCIAL ACTIVITIES	39,600	39,600	0	0.0%
55-520000	FINANCE AND INSURANCE	28,900	28,900	0	0.0%
55-522000	CREDIT INTERMEDIATION ACTIVITIES	12,900	12,900	0	0.0%
55-524000	INSURANCE CARRIERS ACTIVITIES	12,900	12,900	0	0.0%
55-530000	REAL ESTATE AND RENTAL AND LEASING	10,700	10,700	0	0.0%
60-000000	PROFESSIONAL AND BUSINESS SERVICES	109,500	109,800	(300)	-0.3%
60-540000	PROF., SCIENTIFIC, TECHNICAL SERVICES	50,300	50,300	0	0.0%
60-541300	ARCHITECTURAL, ENGINEERING, SERVICES	9,200	9,200	0	0.0%
60-541700	SCIENTIFIC RESEARCH & DEVELOPMENT	8,300	8,300	0	0.0%
60-550000	MGMNT. OF COMPANIES & ENTERPRISES	8,200	8,200	0	0.0%
60-560000	ADMIN., SUPPORT, WASTE MGMNT SERV.	51,000	51,300	(300)	-0.6%
60-561000	ADMINISTRATIVE, SUPPORT SERVICES	46,300	46,600	(300)	-0.6%
60-561300	EMPLOYMENT SERVICES	15,100	15,100	0	0.0%
60-561400	BUSINESS SUPPORT SERVICES	9,100	9,100	0	0.0%
60-561420	TELEPHONE CALL CENTERS	7,000	7,000	0	0.0%
60-561700	SERVICES TO BUILDINGS AND DWELLINGS	13,300	13,400	(100)	-0.7%
65-000000	EDUCATION AND HEALTH SERVICES	120,100	120,400	(300)	-0.2%
65-610000	EDUCATIONAL SERVICES	13,300	13,200	100	0.8%
65-620000	HEALTH CARE AND SOCIAL SERVICES	106,800	107,200	(400)	-0.4%
65-621000	AMBULATORY HEALTH CARE	48,500	48,800	(300)	-0.6%
65-622000	HOSPITALS	26,000	26,100	(100)	-0.4%
65-622100	GENERAL MEDICAL AND SURGICAL	23,400	23,500	(100)	-0.4%
65-623000	NURSING & RESIDENTIAL CARE FACILITIES	15,300	15,300	0	0.0%
65-624000	SOCIAL ASSISTANCE	17,000	17,000	0	0.0%
70-000000	LEISURE AND HOSPITALITY	95,200	95,300	(100)	-0.1%
70-710000	ARTS, ENTERTAINMENT, RECREATION	18,300	18,200	100	0.5%
70-713000	AMUSEMENT GAMBLING, RECREATION	15,500	15,600	(100)	-0.6%
70-713900	OTHER AMUSEMENT & RECREATION IND.	13,500	13,500	0	0.0%
70-720000	ACCOMMODATION AND FOOD SERVICES	76,900	77,100	(200)	-0.3%
70-721000	ACCOMMODATIONS	12,300	12,400	(100)	-0.8%
70-722000	FOOD SERVICE AND DRINKING PLACES	64,600	64,700	(100)	-0.2%
70-722511	FULL SERVICE RESTAURANTS	27,200	27,200	0	0.0%
70-722590	LIMITED SERVICE RESTAURANTS	31,400	31,400	0	0.0%
80-000000	OTHER SERVICES	25,600	25,600	0	0.0%
80-811000	REPAIR AND MAINTENANCE	8,700	8,700	0	0.0%
80-811100	AUTOMOTIVE REPAIR & MAINTENANCE	6,300	6,300	0	0.0%
90-000000	TOTAL GOVERNMENT	124,000	123,700	300	0.2%
90-910000	FEDERAL GOVERNMENT	14,200	14,200	0	0.0%
90-940000	STATE AND LOCAL GOVERNMENT	109,800	109,500	300	0.3%
90-920000	STATE GOVERNMENT	30,100	30,100	0	0.0%
90-921611	STATE EDUCATION	14,800	14,800	0	0.0%
90-929999	STATE ADMINISTRATION	15,300	15,300	0	0.0%
90-930000	LOCAL GOVERNMENT	79,700	79,400	300	0.4%
90-931611	LOCAL EDUCATION	39,600	39,300	300	0.8%
90-939999	LOCAL ADMINISTRATION	40,100	40,100	0	0.0%