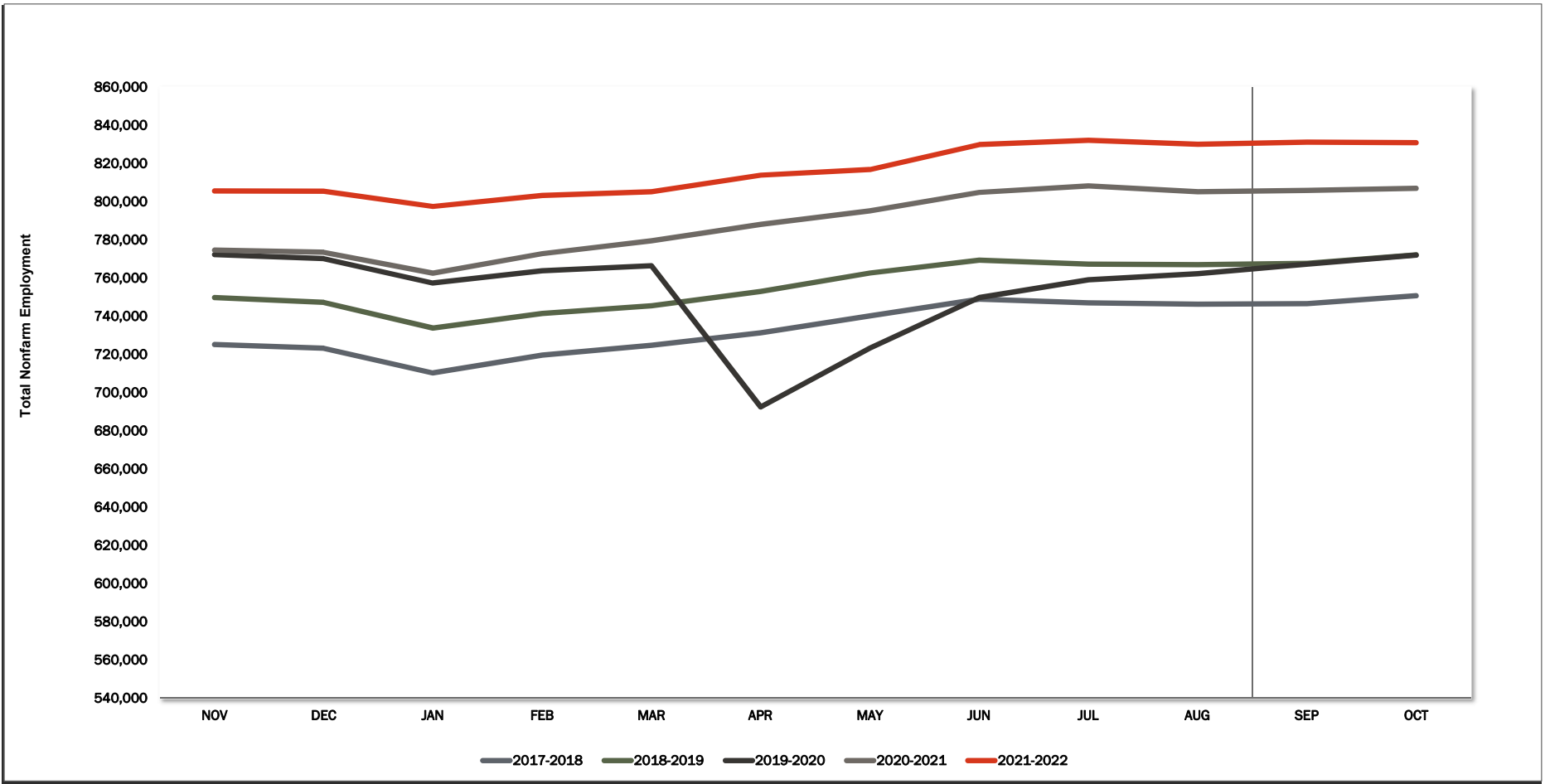
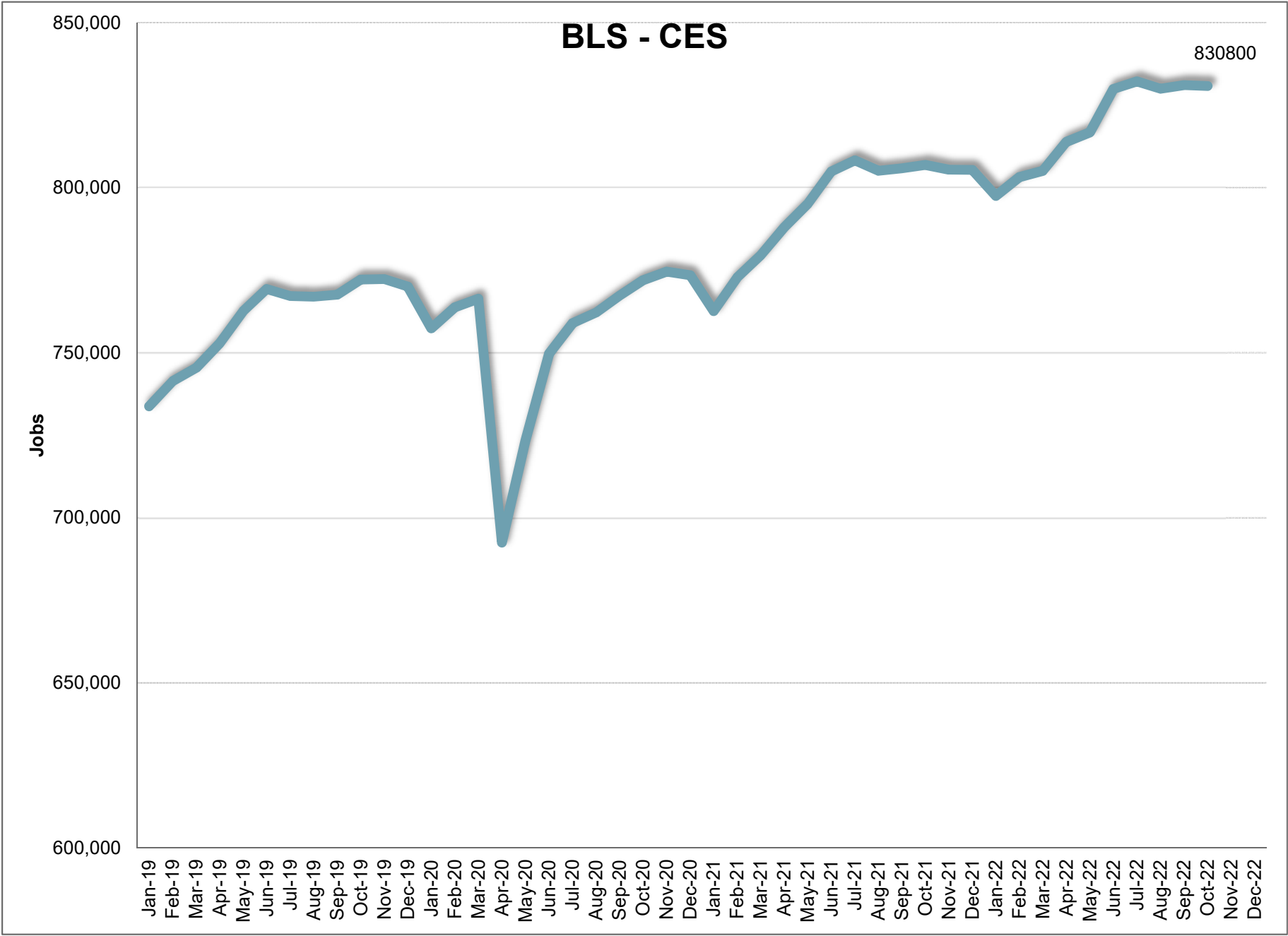


BLS CES



	JAN	FEB	MAR	APR	MAY	JUN	JUL	AUG	SEP	OCT	NOV	DEC	12 Mth Avg
2016	666,700	675,300	682,400	687,800	694,500	700,800	702,800	701,100	706,700	705,800	705,200	701,600	694,200
2017	688,800	695,500	703,700	707,300	716,700	725,100	721,000	720,200	725,300	725,700	725,200	723,200	714,800
2018	710,300	719,600	724,700	731,200	740,100	748,900	747,000	746,200	746,600	750,700	749,700	747,300	738,500
2019	733,800	741,400	745,400	752,900	762,600	769,300	767,200	767,000	767,600	772,200	772,300	770,100	760,200
2020	757,400	763,800	766,400	692,500	723,300	749,700	759,000	762,200	767,300	772,000	774,600	773,500	755,100
2021	762,600	772,800	779,500	788,000	795,100	804,900	808,300	805,100	805,900	806,900	805,500	805,400	795,000
2022	797,500	803,200	805,100	813,900	816,800	829,900	832,200	830,000	831,100	830,800			
Mnth-Mnth % Change													
2021	-1.4%	1.3%	0.9%	1.1%	0.9%	1.2%	0.4%	-0.4%	0.1%	0.1%	-0.2%	0.0%	
2022	-1.0%	0.7%	0.2%	1.1%	0.4%	1.6%	0.3%	-0.3%	0.1%	0.0%			
5-MTM Avg	-1.7%	1.1%	0.7%	-1.2%	1.8%	1.6%	0.1%	0.0%	0.3%	0.4%			
Year-Year % Change													
2021	0.7%	1.2%	1.7%	13.8%	9.9%	7.4%	6.5%	5.6%	5.0%	4.5%	4.0%	4.1%	Avg
2022	4.6%	3.9%	3.3%	3.3%	2.7%	3.1%	3.0%	3.1%	3.1%	3.0%			5.3%
5-YTY Avg	2.7%	2.7%	2.7%	3.0%	2.9%	2.9%	2.9%	2.8%	2.7%	2.7%			



October 2022

Current Employment Statistics

Confidence Interval Bounds of Selected Month's Estimate

Industry Title	Current Month	Estimated Change			Confidence Interval Bounds of Selected Month's Estimate					
		1 Month	3 Month	12 Month	1 Month		3 Month		12 Month	
					+	-	+	-	+	-
Total Nonfarm	830,800	-300	-1,400	39,100	4,105	-4,705	5,948	-8,748	52,934	25,266
Total Private	697,100	-2,300	-11,100	36,100	2,049	-6,649	-3,849	-18,351	49,739	22,461
Goods Producing	141,600	-1,400	-1,700	7,600	577	-3,377	1,587	-4,987	13,815	1,385
Private Service Providing	555,500	-900	-9,400	28,500	2,972	-4,772	-2,937	-15,863	40,642	16,358
Mining and Logging	4,600	0	-100	200	179	-179	232	-432	916	-516
Mining, Logging, and Construction	67,900	-700	-1,100	2,400	851	-2,251	1,425	-3,625	6,991	-2,191
Construction	63,300	-700	-1,000	2,200	841	-2,241	1,504	-3,504	6,735	-2,335
Manufacturing	73,700	-700	-600	5,200	526	-1,926	1,504	-2,704	9,388	1,012
Durable Goods	42,100	-600	-800	4,300	403	-1,603	904	-2,504	7,618	982
Non-Durable Goods	31,600	-100	200	900	604	-804	1,434	-1,034	3,456	-1,656
Trade, Transportation, and Utilities	165,800	-300	-700	12,300	1,350	-1,950	2,108	-3,508	17,518	7,082
Wholesale Trade	34,900	-100	-600	2,500	604	-804	565	-1,765	4,828	172
Retail Trade	95,800	500	-1,100	3,000	1,645	-645	788	-2,988	6,408	-408
Transportation and Utilities	35,100	-700	1,000	6,800	257	-1,657	2,721	-721	9,991	3,609
Information	8,900	-100	500	1,300	166	-366	974	26	2,346	254
Financial Activities	38,900	200	-700	-2,300	866	-466	448	-1,848	156	-4,756
Professional and Business Services	106,600	0	-2,900	6,600	1,816	-1,816	124	-5,924	12,471	729
Professional, Scientific, and Technical Services	49,900	200	-400	4,900	925	-525	830	-1,630	7,463	2,337
Management of Companies and Enterprises	8,300	100	100	700	245	-45	365	-165	1,277	123
Administrative and Support and Waste Managem	48,400	-300	-2,600	1,000	1,358	-1,958	149	-5,349	6,251	-4,251
Education and health services	121,600	600	1,500	7,700	2,252	-1,052	4,170	-1,170	12,679	2,721
Educational Services	14,700	700	1,400	400	1,340	60	2,552	249	2,124	-1,324
Health Care and Social Assistance	106,900	-100	100	7,300	1,423	-1,623	2,508	-2,308	11,972	2,628
Leisure and Hospitality	88,700	-1,200	-6,500	3,500	975	-3,375	-2,807	-10,193	10,274	-3,274
Arts, Entertainment, and Recreation	15,000	-1,500	-3,300	1,900	-363	-2,637	-1,242	-5,358	5,318	-1,518
Accommodation and Food Services	73,700	300	-3,200	1,600	2,154	-1,554	-134	-6,266	7,448	-4,248
Other Services	25,000	-100	-600	-600	903	-1,103	964	-2,164	2,211	-3,411

For information on Bureau of Labor Statistic confidence interval calculations, please visit:

www.bls.gov/sae/790stderr.htm

BLS CES

		2022									
		September									
NAICS	Category	SEP	AUG	SEP-2021	Change	%	Avg*	Change	%	Avg*	
00-000000	Total Nonfarm	831,100	830,000	805,900	1,100	0.1%	0.3%	25,200	3.1%	2.7%	
05-000000	Total Private	699,400	705,500	679,100	-6,100	-0.9%	-0.8%	20,300	3.0%	3.1%	
06-000000	Goods Producing	143,000	143,500	136,600	-500	-0.3%	-0.8%	6,400	4.7%	3.8%	
07-000000	Service Providing, (Inc. Gov)	688,100	686,500	669,300	1,600	0.2%	0.6%	18,800	2.8%	2.5%	
08-000000	Private Service Providing	556,400	562,000	542,500	-5,600	-1.0%	-0.8%	13,900	2.6%	2.9%	
10-000000	Natural Resources	4,600	4,700	4,300	-100	-2.1%	-1.5%	300	7.0%	1.1%	
20-000000	Construction	64,000	64,800	61,900	-800	-1.2%	-1.6%	2,100	3.4%	6.9%	
20-236000	Construction of Buildings	14,700	14,900	14,600	-200	-1.3%	-1.9%	100	0.7%	7.3%	
20-236100	Residential Building Const.	9,200	9,400	9,000	-200	-2.1%	-2.3%	200	2.2%	9.6%	
20-237000	Heavy And Civil Const.	7,600	7,700	7,400	-100	-1.3%	-1.0%	200	2.7%	6.5%	
20-238000	Specialty Trade Contractors	41,700	42,200	39,900	-500	-1.2%	-1.6%	1,800	4.5%	6.8%	
20-238100	Foundtn, Strctre, Bldng Contract	10,700	10,800	10,200	-100	-0.9%	-2.2%	500	4.9%	7.8%	
20-238200	Building Equipment Contractors	15,400	15,700	14,600	-300	-1.9%	-0.6%	800	5.5%	6.2%	
20-238300	Building Finishing Contractors	8,300	8,300	7,900	0	0.0%	-1.9%	400	5.1%	6.8%	
20-238900	Other Specialty Trade Contractors	7,300	7,400	7,200	-100	-1.4%	-2.4%	100	1.4%	6.7%	
30-000000	Manufacturing	74,400	74,000	70,400	400	0.5%	-0.2%	4,000	5.7%	1.7%	
31-000000	Durable Goods	42,700	43,000	40,400	-300	-0.7%	-0.9%	2,300	5.7%	1.5%	
31-334000	Computer And Elect. Manufact.	10,200	10,400	10,700	-200	-1.9%	-1.2%	-500	-4.7%	-2.2%	
31-334100	Computer And Periph. Manufact.	1,600	1,600	1,700	0	0.0%	0.0%	-100	-5.9%	-4.7%	
31-334400	Semiconductor & Othr Elect. Manuf.	7,500	7,700	8,000	-200	-2.6%	-1.8%	-500	-6.3%	-1.8%	
32-000000	Nondurable Goods	31,700	31,000	30,000	700	2.3%	0.8%	1,700	5.7%	2.0%	
32-311000	Food Manufacturing	20,500	20,300	19,300	200	1.0%	1.5%	1,200	6.2%	2.0%	
32-311400	Fruit & Vegetable Manufacturing	7,200	7,200	7,000	0	0.0%	0.6%	200	2.9%	-0.3%	
40-000000	Trade, Transportation, & Utilities	166,100	167,100	159,700	-1,000	-0.6%	-0.3%	6,400	4.0%	2.9%	
41-000000	Wholesale Trade	35,000	35,500	33,500	-500	-1.4%	-0.6%	1,500	4.5%	3.5%	
41-423000	Merchant Whsalers Dur. Gds	19,100	19,300	18,200	-200	-1.0%	-0.4%	900	4.9%	4.4%	
41-424000	Merchant Whsalers Nondur. Gds	13,500	13,800	13,500	-300	-2.2%	-0.9%	0	0.0%	2.4%	
42-000000	Retail Trade	95,300	96,100	93,200	-800	-0.8%	-0.7%	2,100	2.3%	1.5%	
42-441000	Motor Vehicle And Parts Dealers	14,600	14,700	14,200	-100	-0.7%	-0.8%	400	2.8%	1.2%	
42-444000	Bldng Materials & Garden Supplies	10,000	10,200	10,100	-200	-2.0%	-2.5%	-100	-1.0%	4.3%	
42-445000	Food And Beverage Stores	16,700	16,700	15,900	0	0.0%	-0.6%	800	5.0%	3.1%	
42-445100	Grocery Stores	15,000	14,800	14,000	200	1.4%	-1.2%	1,000	7.1%	3.0%	
42-452000	General Merchandise Stores	18,000	17,900	18,000	100	0.6%	0.2%	0	0.0%	0.4%	
42-452200	Department Stores	3,900	3,800	4,000	100	2.6%	0.7%	-100	-2.5%	-2.6%	
42-452300	Other General Merchandise Stores	14,100	14,100	14,000	0	0.0%	0.1%	100	0.7%	1.5%	
43-000000	Transport., Wrhse, And Utilities	35,800	35,500	33,000	300	0.8%	1.5%	2,800	8.5%	6.7%	
43-220000	Utilities	3,100	3,100	3,100	0	0.0%	0.0%	0	0.0%	0.7%	
43-400089	Transportation And Warehousing	32,700	32,400	29,900	300	0.9%	1.6%	2,800	9.4%	7.5%	
43-484000	Truck Transportation	11,200	11,100	11,000	100	0.9%	1.9%	200	1.8%	1.1%	
43-484100	General Freight Trucking	7,400	7,400	7,300	0	0.0%	0.3%	100	1.4%	1.5%	
50-000000	Information	9,000	8,300	8,300	700	8.4%	-1.2%	700	8.4%	-0.7%	
50-517000	Telecommunications	2,100	2,100	2,200	0	0.0%	-1.0%	-100	-4.5%	-3.7%	
55-000000	Financial Activities	38,700	39,700	39,700	-1,000	-2.5%	-0.7%	-1,000	-2.5%	3.3%	
55-520000	Finance And Insurance	28,300	29,000	28,900	-700	-2.4%	-0.3%	-600	-2.1%	2.4%	
55-522000	Credit Intermediation Activities	12,700	12,900	13,000	-200	-1.6%	-0.3%	-300	-2.3%	1.8%	
55-524000	Insurance Carriers Activities	12,600	12,900	12,800	-300	-2.3%	0.0%	-200	-1.6%	1.8%	
55-530000	Real Estate And Rental And Leasing	10,400	10,700	10,800	-300	-2.8%	-2.1%	-400	-3.7%	5.9%	
60-000000	Professional And Business Services	106,600	110,100	105,200	-3,500	-3.2%	-1.1%	1,400	1.3%	3.2%	
60-540000	Prof., Scientific, Technical Services	49,700	50,100	46,700	-400	-0.8%	-0.8%	3,000	6.4%	5.5%	
60-541300	Architectural, Engineering, Services	9,100	9,200	8,100	-100	-1.1%	-1.4%	1,000	12.3%	5.8%	
60-541700	Scientific Research & Development	8,200	8,300	7,500	-100	-1.2%	-1.4%	700	9.3%	4.6%	
60-550000	Mgmt. Of Companies & Enterprises	8,200	8,200	7,700	0	0.0%	0.0%	500	6.5%	4.4%	
60-560000	Admin., Support, Waste Mgmt Serv.	48,700	51,800	50,800	-3,100	-6.0%	-1.6%	-2,100	-4.1%	1.2%	
60-561000	Administrative, Support Services	44,900	47,300	46,400	-2,400	-5.1%	-1.7%	-1,500	-3.2%	0.9%	
60-561300	Employment Services	14,800	15,300	15,700	-500	-3.3%	0.0%	-900	-5.7%	-0.5%	
60-561400	Business Support Services	8,900	9,200	9,900	-300	-3.3%	-0.7%	-1,000	-10.1%	-4.0%	
60-561420	Telephone Call Centers	6,800	7,000	7,700	-200	-2.9%	-0.2%	-900	-11.7%	-4.0%	
60-561700	Services To Buildings And Dwellings	12,800	13,500	13,700	-700	-5.2%	-4.5%	-900	-6.6%	4.5%	
65-000000	Education And Health Services	121,000	117,700	115,400	3,300	2.8%	1.2%	5,600	4.9%	3.0%	
65-610000	Educational Services	14,000	11,600	12,600	2,400	20.7%	15.6%	1,400	11.1%	2.3%	
65-620000	Health Care And Social Services	107,000	106,100	102,800	900	0.8%	-0.3%	4,200	4.1%	3.1%	
65-621000	Ambulatory Health Care	48,300	47,900	46,800	400	0.8%	0.0%	1,500	3.2%	4.8%	
65-622000	Hospitals	26,200	25,900	25,300	300	1.2%	0.0%	900	3.6%	2.0%	
65-622100	General Medical And Surgical	23,500	23,300	22,900	200	0.9%	0.4%	600	2.6%	1.5%	
65-623000	Nursing & Residential Care Facilities	15,400	15,300	14,600	100	0.7%	-0.5%	800	5.5%	0.2%	
65-624000	Social Assistance	17,100	17,000	16,100	100	0.6%	-0.8%	1,000	6.2%	1.6%	
70-000000	Leisure And Hospitality	89,900	93,500	87,800	-3,600	-3.9%	-3.5%	2,100	2.4%	3.3%	
70-710000	Arts, Entertainment, Recreation	16,500	17,600	14,100	-1,100	-6.3%	-10.3%	2,400	17.0%	5.5%	
70-713000	Amusement Gambling, Recreation	13,800	15,000	11,900	-1,200	-8.0%	-12.1%	1,900	16.0%	5.4%	
70-713900	Other Amusement & Recreation Ind.	12,300	13,100	10,300	-800	-6.1%	-9.7%	2,000	19.4%	5.5%	
70-720000	Accommodation And Food Services	73,400	75,900	73,700	-2,500	-3.3%	-2.2%	-300	-0.4%	2.9%	
70-721000	Accommodations	11,300	12,100	10,600	-800	-6.6%	-6.7%	700	6.6%	2.2%	
70-722000	Food Service And Drinking Places	62,100	63,800	63,100	-1,700	-2.7%	-1.3%	-1,000	-1.6%	3.1%	
70-722511	Full Service Restaurants	25,600	26,800	25,600	-1,200	-4.5%	-2.0%	0	0.0%	0.9%	
70-722590	Limited Service Restaurants	30,400	31,000	32,400	-600	-1.9%	-1.5%	-2,000	-6.2%	5.0%	
80-000000	Other Services	25,100	25,600	26,400	-500	-2.0%	-2.0%	-1,300	-4.9%	1.5%	
80-811000	Repair And Maintenance	8,400	8,700	8,700	-300	-3.4%	-1.0%	-300	-3.4%	3.3%	
80-811100	Automotive Repair & Maintenance	6,200	6,300	6,300	-100	-1.6%	-1.3%	-100	-1.6%	3.5%	
90-000000	Total Government	131,700	124,500	126,800	7,200	5.8%	6.6%	4,900	3.9%	0.6%	
90-910000	Federal Government	13,900	14,100	13,800	-200	-1.4%	-2.5%	100	0.7%	0.4%	
90-940000	State And Local Government	117,800	110,400	113,000	7,400	6.7%	7.8%	4,800	4.2%	0.7%	
90-920000	State Government	33,400	31,600	31,200	1,800	5.7%	10.3%	2,200	7.1%	0.7%	
90-921611	State Education	18,100	16,200	15,900	1,900	11.7%	26.6%	2,200	13.8%	1.3%	
90-929999	State Administration	15,300	15,400	15,300	-100	-0.6%	-2.2%	0	0.0%	0.1%	
90-930000	Local Government	84,400	78,800	81,800	5,600	7.1%	6.9%	2,600	3.2%	0.7%	
90-931611	Local Education	44,700	38,900	43,100	5,800	14.9%	16.0%	1,600	3.7%	0.7%	
90-939999	Local Administration	39,700	39,900	38,700	-200	-0.5%	-1.6%	1,000	2.6%	0.7%	

* = Average is based on the previous five years of experience.

BLS CES

PRELIMINARY AND FINAL ESTIMATE COMPARISON

August - 2022

NAICS	Category	Final	Preliminary	Change	%
00-000000	TOTAL NONFARM	830,000	827,300	2,700	0.3%
05-000000	TOTAL PRIVATE	705,500	704,300	1,200	0.2%
06-000000	GOODS PRODUCING	143,500	143,400	100	0.1%
07-000000	SERVICE PROVIDING. (INC. GOV)	686,500	683,900	2,600	0.4%
08-000000	PRIVATE SERVICE PROVIDING	562,000	560,900	1,100	0.2%
10-000000	NATURAL RESOURCES	4,700	4,700	0	0.0%
20-000000	CONSTRUCTION	64,800	64,700	100	0.2%
20-236000	CONSTRUCTION OF BUILDING	14,900	14,900	0	0.0%
20-236100	RESIDENTIAL BUILDING CONST.	9,400	9,300	100	1.1%
20-237000	HEAVY AND CIVIL CONST.	7,700	7,600	100	1.3%
20-238000	SPECIALTY TRADE CONTRACTORS	42,200	42,200	0	0.0%
20-238100	FOUNDTN, STRCTRE, BLDING CONTRACT	10,800	10,800	0	0.0%
20-238200	BUILDING EQUIPMENT CONTRACTORS	15,700	15,700	0	0.0%
20-238300	BUILDING FINISHING CONTRACTORS	8,300	8,300	0	0.0%
20-238900	OTHER SPECIALTY TRADE CONTRACTORS	7,400	7,400	0	0.0%
30-000000	MANUFACTURING	74,000	74,000	-	0.0%
31-000000	DURABLE GOODS	43,000	42,900	100	0.2%
31-334000	COMPUTER AND ELECT. MANUFACT.	10,400	10,400	0	0.0%
31-334100	COMPUTER AND PERIPH. MANUFACT.	1,600	1,600	0	0.0%
31-334400	SEMICONDUCTOR & OTHR ELECT. MANUF.	7,700	7,700	0	0.0%
32-000000	NONDURABLE GOODS	31,000	31,100	(100)	-0.3%
32-311000	FOOD MANUFACTURING	20,300	20,500	(200)	-1.0%
32-311400	FRUIT & VEGETABLE MANUFACTURING	7,200	7,300	(100)	-1.4%
40-000000	TRADE, TRANSPORTATION, & UTILITIES	167,100	167,600	(500)	-0.3%
41-000000	WHOLESALE TRADE	35,500	35,700	(200)	-0.6%
41-423000	MERCHANT WHLSALERS DUR. GDS	19,300	19,400	(100)	-0.5%
41-424000	MERCHANT WHLSALERS NONDUR. GDS	13,800	13,800	0	0.0%
42-000000	RETAIL TRADE	96,100	96,400	(300)	-0.3%
42-441000	MOTOR VEHICLE AND PARTS DEALERS	14,700	14,700	0	0.0%
42-444000	BLDING MATERIALS & GARDEN SUPPLIES	10,200	10,300	(100)	-1.0%
42-445000	FOOD AND BEVERAGE STORES	16,700	16,700	0	0.0%
42-445100	GROCERY STORES	14,800	14,900	(100)	-0.7%
42-452000	GENERAL MERCHANDISE STORES	17,900	18,000	(100)	-0.6%
42-452200	DEPARTMENT STORES	3,800	3,800	0	0.0%
42-452300	OTHER GENERAL MERCHANDISE STORES	14,100	14,200	(100)	-0.7%
43-000000	TRANSPORT., WRHOUSE, AND UTILITIES	35,500	35,500	0	0.0%
43-220000	UTILITIES	3,100	3,100	0	0.0%
43-400089	TRANSPORTATION AND WAREHOUSING	32,400	32,400	0	0.0%
43-484000	TRUCK TRANSPORTATION	11,100	11,100	0	0.0%
43-484100	GENERAL FREIGHT TRUCKING	7,400	7,400	0	0.0%
50-000000	INFORMATION	8,300	8,300	0	0.0%
50-517000	TELECOMMUNICATIONS	2,100	2,100	0	0.0%
55-000000	FINANCIAL ACTIVITIES	39,700	39,800	(100)	-0.3%
55-520000	FINANCE AND INSURANCE	29,000	29,100	(100)	-0.3%
55-522000	CREDIT INTERMEDIATION ACTIVITIES	12,900	12,900	0	0.0%
55-524000	INSURANCE CARRIERS ACTIVITIES	12,900	12,900	0	0.0%
55-530000	REAL ESTATE AND RENTAL AND LEASING	10,700	10,700	0	0.0%
60-000000	PROFESSIONAL AND BUSINESS SERVICES	110,100	109,700	400	0.4%
60-540000	PROF., SCIENTIFIC, TECHNICAL SERVICES	50,100	49,800	300	0.6%
60-541300	ARCHITECTURAL, ENGINEERING, SERVICES	9,200	9,200	0	0.0%
60-541700	SCIENTIFIC RESEARCH & DEVELOPMENT	8,300	8,300	0	0.0%
60-550000	MGMNT. OF COMPANIES & ENTERPRISES	8,200	8,200	0	0.0%
60-560000	ADMIN., SUPPORT, WASTE MGMNT SERV.	51,800	51,700	100	0.2%
60-561000	ADMINISTRATIVE, SUPPORT SERVICES	47,300	47,200	100	0.2%
60-561300	EMPLOYMENT SERVICES	15,300	15,200	100	0.7%
60-561400	BUSINESS SUPPORT SERVICES	9,200	9,100	100	1.1%
60-561420	TELEPHONE CALL CENTERS	7,000	7,000	0	0.0%
60-561700	SERVICES TO BUILDINGS AND DWELLINGS	13,500	13,500	0	0.0%
65-000000	EDUCATION AND HEALTH SERVICES	117,700	116,900	800	0.7%
65-610000	EDUCATIONAL SERVICES	11,600	11,400	200	1.8%
65-620000	HEALTH CARE AND SOCIAL SERVICES	106,100	105,500	600	0.6%
65-621000	AMBULATORY HEALTH CARE	47,900	47,600	300	0.6%
65-622000	HOSPITALS	25,900	25,800	100	0.4%
65-622100	GENERAL MEDICAL AND SURGICAL	23,300	23,200	100	0.4%
65-623000	NURSING & RESIDENTIAL CARE FACILITIES	15,300	15,200	100	0.7%
65-624000	SOCIAL ASSISTANCE	17,000	16,900	100	0.6%
70-000000	LEISURE AND HOSPITALITY	93,500	93,100	400	0.4%
70-710000	ARTS, ENTERTAINMENT, RECREATION	17,600	17,600	0	0.0%
70-713000	AMUSEMENT GAMBLING, RECREATION	15,000	15,000	0	0.0%
70-713900	OTHER AMUSEMENT & RECREATION IND.	13,100	13,000	100	0.8%
70-720000	ACCOMMODATION AND FOOD SERVICES	75,900	75,500	400	0.5%
70-721000	ACCOMMODATIONS	12,100	12,100	0	0.0%
70-722000	FOOD SERVICE AND DRINKING PLACES	63,800	63,400	400	0.6%
70-722511	FULL SERVICE RESTAURANTS	26,800	27,100	(300)	-1.1%
70-722590	LIMITED SERVICE RESTAURANTS	31,000	30,600	400	1.3%
80-000000	OTHER SERVICES	25,600	25,500	100	0.4%
80-811000	REPAIR AND MAINTENANCE	8,700	8,600	100	1.2%
80-811100	AUTOMOTIVE REPAIR & MAINTENANCE	6,300	6,300	0	0.0%
90-000000	TOTAL GOVERNMENT	124,500	123,000	1,500	1.2%
90-910000	FEDERAL GOVERNMENT	14,100	14,100	0	0.0%
90-940000	STATE AND LOCAL GOVERNMENT	110,400	108,900	1,500	1.4%
90-920000	STATE GOVERNMENT	31,600	30,200	1,400	4.6%
90-921611	STATE EDUCATION	16,200	14,800	1,400	9.5%
90-929999	STATE ADMINISTRATION	15,400	15,400	0	0.0%
90-930000	LOCAL GOVERNMENT	78,800	78,700	100	0.1%
90-931611	LOCAL EDUCATION	38,900	38,800	100	0.3%
90-939999	LOCAL ADMINISTRATION	39,900	39,900	0	0.0%