

Unemployment Insurance Claimant Characteristics January 2023



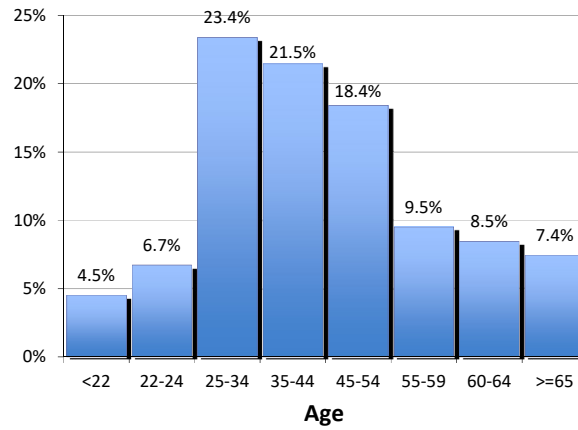
Communications & Research Bureau

Gender of the Insured Unemployed

Male	7,521	74.4%
Female	2,589	25.6%
N/A	1	0.01%
Total	10,111	100%

Age of the Insured Unemployed

<22	456	4.5%
22-24	680	6.7%
25-34	2,365	23.4%
35-44	2,169	21.5%
45-54	1,862	18.4%
55-59	961	9.5%
60-64	856	8.5%
>=65	752	7.4%
INA	10	INA
Total	10,111	100%



Race of the Insured Unemployed

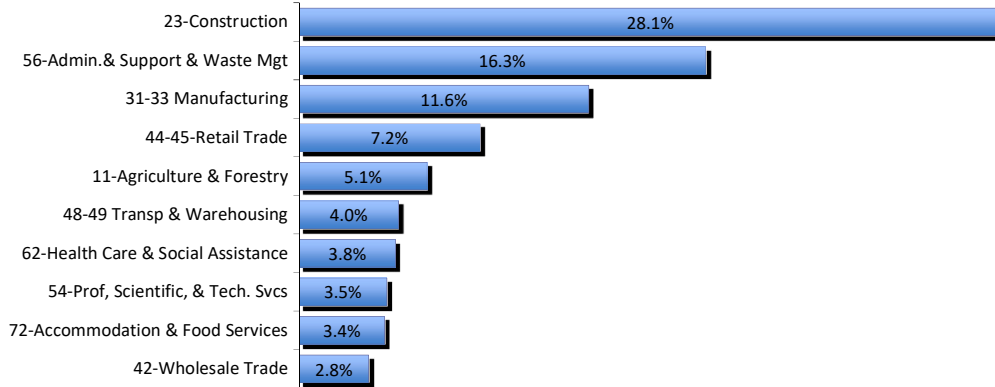
Native Am.	977	6.8%
Asian	170	1.2%
African Am.	273	1.9%
Pacific Islander	168	1.2%
White	9,961	69.1%
INA	2,862	19.9%
* Total	14,411	100%

Ethnicity of the Insured Unemployed

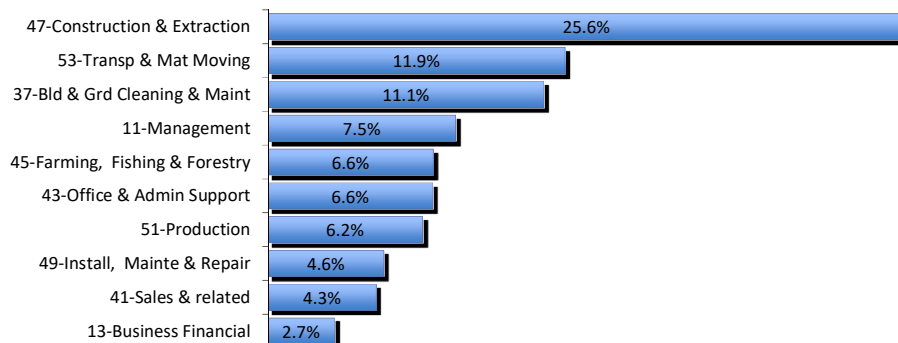
Hispanic/Latino	1,862	18.4%
Non-Hispanic/Latino	7,026	69.5%
INA	1,223	12.1%
Total	10,111	100.0%

* Some Claimants choose more than one race category

What industries did the claimants work in?



What occupations did the claimants hold?



Unemployment Insurance Claimant Characteristics

January 2023



Communications & Research Bureau

Demographics	January 2023		December 2022		Monthly Difference	January 2022		Yearly Difference
Gender:								
Male	7,521	74.4%	5,860	71.4%	1,661	6,309	76.1%	1212
Female	2,589	25.6%	2,346	28.6%	243	1,975	23.8%	614
INA	1	0.0%	0	0.0%	1	2	0.0%	-1
Total	10,111		8,206		1,905	8,286		1825
Race: NOTE: Claimants may choose more than one Race category								
Native American	977	N/A	771	N/A	206	897	N/A	80
Asian	170	N/A	133	N/A	37	148	N/A	22
African American	273	N/A	222	N/A	51	219	N/A	54
Pacific Islander	168	N/A	142	N/A	26	124	N/A	44
White	9,961	N/A	7,001	N/A	2,960	7,001	N/A	2960
INA	2,862	N/A	2,174	N/A	688	2,174	N/A	688
Ethnicity:								
Hispanic/Latino	1,862	18.4%	1,559	19.0%	303	1,536	18.5%	326
Non-Hispanic/Latino	7,026	69.5%	5,679	69.2%	1,347	5,703	68.8%	1323
INA	1,223	12.1%	968	11.8%	255	1,047	12.6%	176
Age:								
<22	456	4.5%	353	4.3%	103	353	4.3%	103
22-24	680	6.7%	555	6.8%	125	473	5.7%	207
25-34	2,365	23.4%	1,844	22.5%	521	1,748	21.1%	617
35-44	2,169	21.5%	1,745	21.3%	424	1,726	20.8%	443
45-54	1,862	18.4%	1,503	18.3%	359	1,564	18.9%	298
55-59	961	9.5%	803	9.8%	158	895	10.8%	66
60-64	856	8.5%	727	8.9%	129	784	9.5%	72
>=65	752	7.4%	672	8.2%	80	737	8.9%	15
Total	10,101		8,202		1,899	8,280		1821

Unemployment Insurance Claimant Characteristics *

January 2023



Communications & Research Bureau

Industry	January 2023	December 2022	Monthly Difference	January 2022	Yearly Difference
23-Construction	2,845 28%	2,179 27%	666	2,372 29%	473
56-Admin.& Support & Waste Mgt	1,645 16%	1,354 17%	291	1,502 18%	143
31-33 Manufacturing	1,172 12%	829 10%	343	703 8%	469
44-45-Retail Trade	732 7%	562 7%	170	547 7%	185
11-Agriculture & Forestry	517 5%	412 5%	105	565 7%	-48
48-49 Transp & Warehousing	401 4%	335 4%	66	271 3%	130
62-Health Care & Social Assistance	389 4%	378 5%	11	318 4%	71
54-Prof, Scientific, & Tech. Svcs	354 4%	294 4%	60	214 3%	140
72-Accommodation & Food Services	345 3%	343 4%	2	313 4%	32
42-Wholesale Trade	280 3%	247 3%	33	224 3%	56
52-Finance & Insurance	241 2%	233 3%	8	100 1%	141
92-Public Administration	211 2%	185 2%	26	233 3%	-22
71-Arts, Entertainment & Recreation	182 2%	154 2%	28	201 2%	-19
81-Other Services (ex Public Admin)	137 1%	123 1%	14	136 2%	1
53-Real Estate & Rental & Leasing	115 1%	106 1%	9	67 1%	48
21-Mining	108 1%	83 1%	25	94 1%	14
51-Information	89 1%	79 1%	10	32 0%	57
61-Educational Services	65 1%	53 1%	12	71 1%	-6
22-Utilities	36 0%	27 0%	9	44 1%	-8
55-Mgt of Companies & Enterprises	6 0%	11 0%	-5	8 0%	-2
INA*	241 2%	219 3%	22	271 3%	-30
Total	10,111	8,206	1,905	8,286	1,825

Occupations	January 2023	December 2022	Monthly Difference	January 2022	Yearly Difference
47-Construction & Extraction	2,592 26%	1,843 22%	749	2,091 25%	501
53-Transp & Mat Moving	1,207 12%	991 12%	216	1,037 13%	170
37-Bld & Grd Cleaning & Maint	1,121 11%	917 11%	204	1,085 13%	36
11-Management	762 8%	662 8%	100	572 7%	190
45-Farming, Fishing & Forestry	671 7%	506 6%	165	698 8%	-27
43-Office & Admin Support	669 7%	587 7%	82	464 6%	205
51-Production	628 6%	448 5%	180	317 4%	311
49-Install, Mainte & Repair	470 5%	340 4%	130	339 4%	131
41-Sales & related	439 4%	379 5%	60	289 3%	150
13-Business Financial	269 3%	244 3%	25	133 2%	136
35-Food Prep & Related	235 2%	220 3%	15	242 3%	-7
17-Architect & Engineer	143 1%	101 1%	42	97 1%	46
31-Healthcare Support	111 1%	95 1%	16	115 1%	-4
27-Art Design, Entert Spt & Media	89 1%	73 1%	16	52 1%	37
15-Computer Math	82 1%	80 1%	2	47 1%	35
29-Healthcare Pract & Tech	82 1%	71 1%	11	84 1%	-2
33-Protective Svcs	79 1%	71 1%	8	65 1%	14
39-Personal Care & Svcs	69 1%	54 1%	15	64 1%	5
19-Life Phys Social	57 1%	43 1%	14	56 1%	1
21-Community & Social Svcs	45 0%	48 1%	-3	47 1%	-2
25-Ed Training & Library	41 0%	45 1%	-4	44 1%	-3
23-Legal	30 0%	24 0%	6	13 0%	17
55-Military Specific	4 0%	1 0%	3	2 0%	2
INA*	216 2%	363 4%	-147	333 4%	-117
Total	10,111	8,206	1,905	8,286	1,825

* This data reflects UI claims characteristics for the pay period including the 12th of the month.