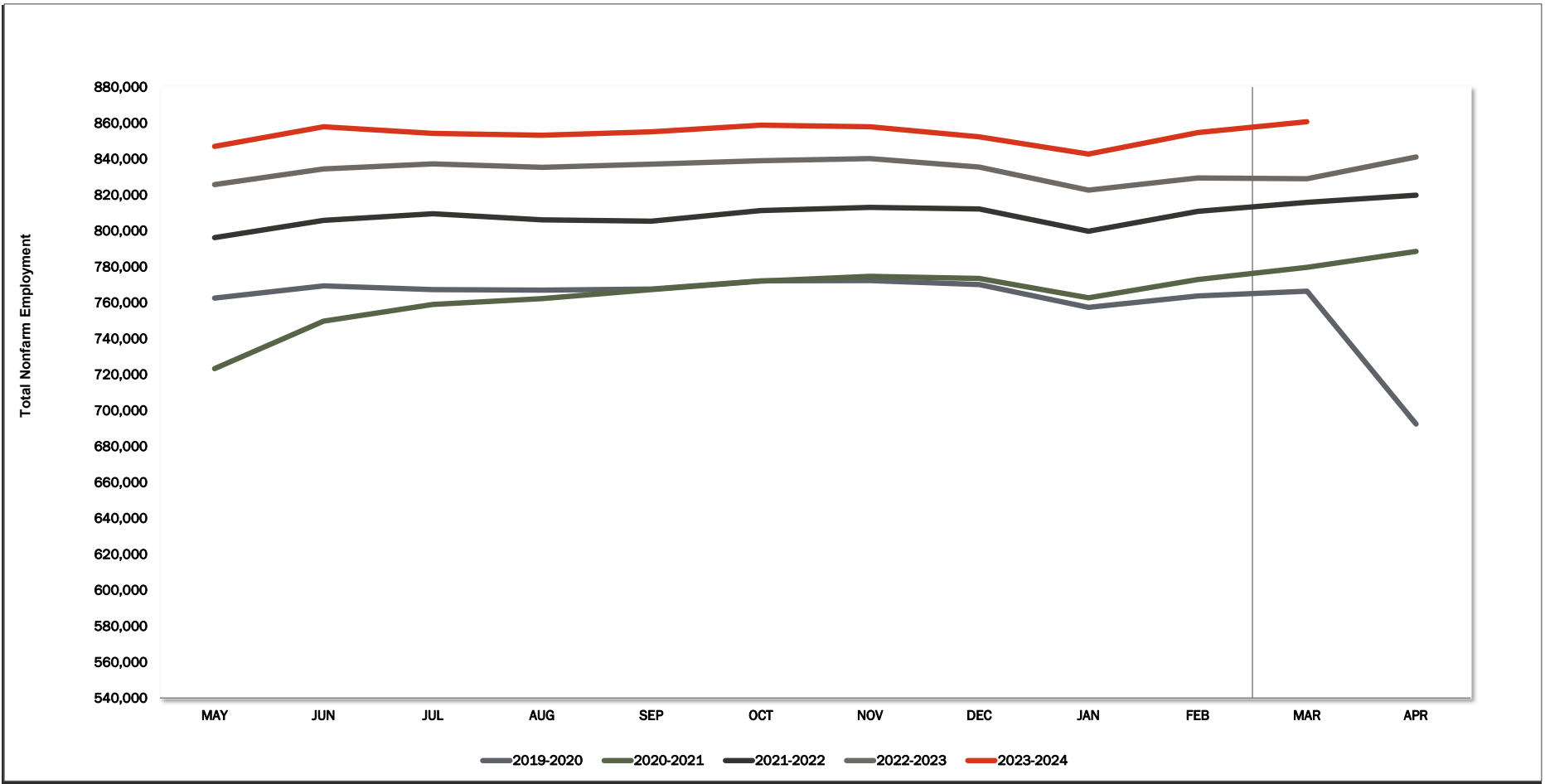
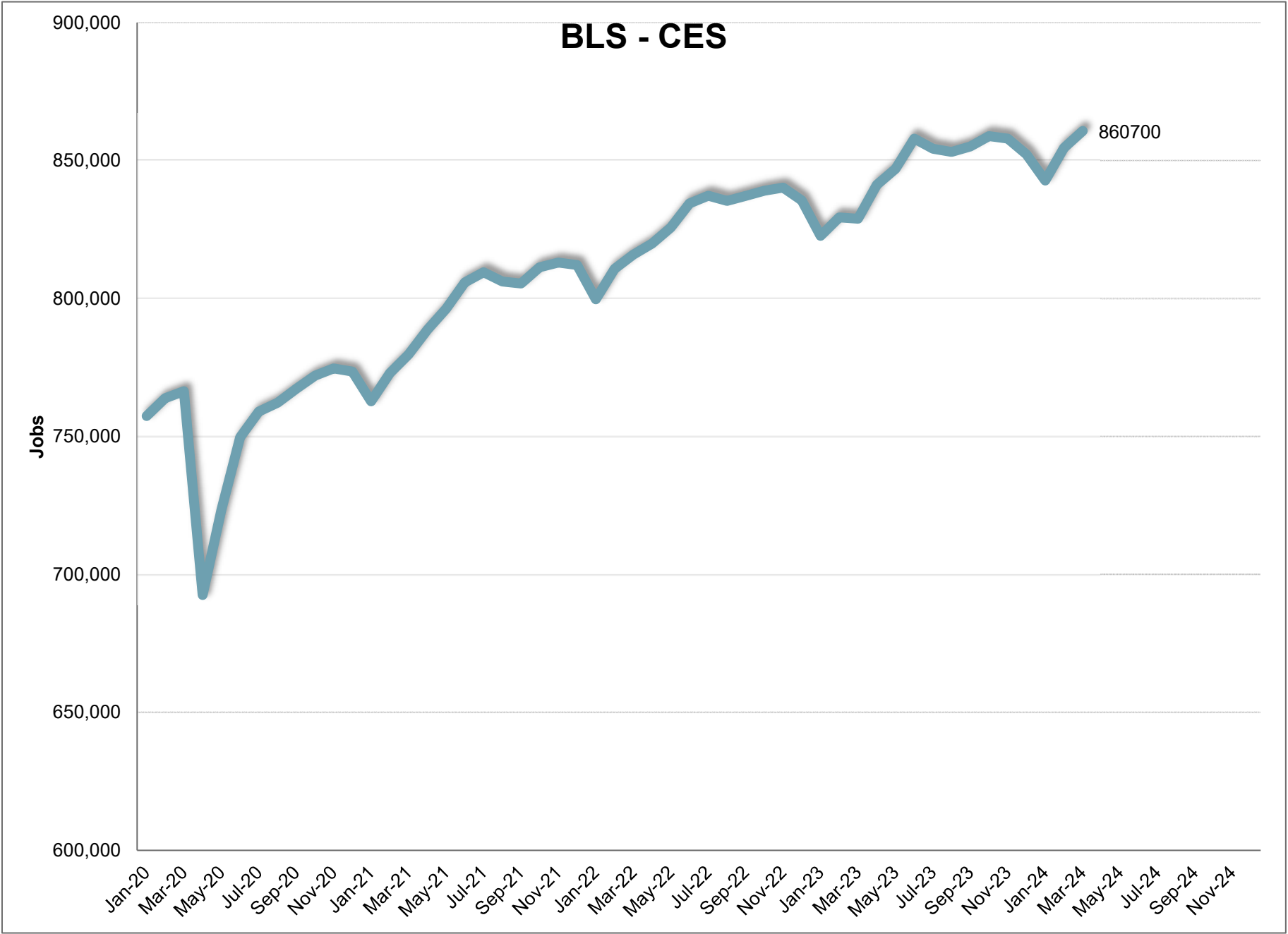


# BLS CES



	JAN	FEB	MAR	APR	MAY	JUN	JUL	AUG	SEP	OCT	NOV	DEC	12 Mth Avg
2018	710,300	719,600	724,700	731,200	740,100	748,900	747,000	746,200	746,600	750,700	749,700	747,300	738,500
2019	733,800	741,400	745,400	752,900	762,600	769,300	767,200	767,000	767,600	772,200	772,300	770,100	760,200
2020	757,400	763,800	766,400	692,500	723,300	749,700	759,000	762,200	767,300	772,000	774,600	773,500	755,100
2021	762,700	772,900	779,700	788,600	796,200	805,800	809,500	806,100	805,400	811,300	813,000	812,100	796,900
2022	799,681	810,736	815,872	819,862	825,720	834,435	837,238	835,354	837,133	839,045	840,166	835,460	827,600
2023	822,700	829,300	828,900	841,100	846,900	857,900	854,300	853,100	855,100	858,800	857,900	852,200	846,500
2024	842,711	854,600	860,700										
<b>Mnth-Mnth % Change</b>													
2023	-1.5%	0.8%	-0.1%	1.5%	0.7%	1.3%	-0.4%	-0.1%	0.2%	0.4%	-0.1%	-0.7%	
2024	-1.1%	1.4%	0.7%										
5-MTM Avg	-1.6%	1.1%	0.5%										
<b>Year-Year % Change</b>													
2023	2.9%	2.3%	1.6%	2.6%	2.6%	2.8%	2.0%	2.1%	2.1%	2.4%	2.1%	2.0%	Avg
2024	2.4%	3.0%	3.8%										2.3%
5-YTY Avg	3.0%	2.9%	2.7%										



**March 2024**

**Current Employment Statistics**

**Confidence Interval Bounds of Selected Month's Estimate**

Industry Title	Current Month	Estimated Change			Confidence Interval Bounds of Selected Month's Estimate					
		1 Month	3 Month	12 Month	1 Month		3 Month		12 Month	
					+	-	+	-	+	-
Total Nonfarm	860,700	6,100	8,487	31,800	10,505	1,695	15,835	1,139	45,634	17,966
Total Private	724,200	5,000	4,553	25,494	9,349	651	11,804	-2,698	39,133	11,855
Goods Producing	152,700	1,600	3,972	9,599	3,577	-377	7,259	685	15,814	3,384
Private Service Providing	571,500	3,400	581	15,895	7,272	-472	7,044	-5,882	28,037	3,753
Mining and Logging	4,200	0	-38	365	179	-179	294	-370	1,081	-351
Mining, Logging, and Construction	73,600	700	348	5,269	2,251	-851	2,873	-2,177	9,860	678
Construction	69,400	700	386	4,904	2,241	-841	2,890	-2,118	9,439	369
Manufacturing	79,100	900	3,624	4,330	2,126	-326	5,728	1,520	8,518	142
Durable Goods	44,300	100	1,416	1,451	1,103	-903	3,120	-288	4,769	-1,867
Non-Durable Goods	34,800	800	2,208	2,879	1,504	96	3,442	974	5,435	323
Trade, Transportation, and Utilities	161,300	1,000	-3,503	2,239	2,650	-650	-695	-6,311	7,457	-2,979
Wholesale Trade	35,900	300	491	1,151	1,004	-404	1,656	-674	3,479	-1,177
Retail Trade	92,800	900	-1,346	492	2,045	-245	542	-3,234	3,900	-2,916
Transportation and Utilities	32,600	-200	-2,648	596	757	-1,157	-927	-4,369	3,787	-2,595
Information	9,300	-100	-239	-194	166	-366	235	-713	852	-1,240
Financial Activities	41,400	600	-680	687	1,266	-66	468	-1,828	3,143	-1,769
Professional and Business Services	108,600	-200	54	1,334	1,616	-2,016	3,078	-2,970	7,205	-4,537
Professional, Scientific, and Technical Services	52,200	-700	-270	607	25	-1,425	960	-1,500	3,170	-1,956
Management of Companies and Enterprises	8,600	0	97	359	145	-145	362	-168	936	-218
Administrative and Support and Waste Managem	47,800	500	227	368	2,158	-1,158	2,976	-2,522	5,619	-4,883
Education and health services	131,900	200	3,603	9,338	1,852	-1,452	6,273	933	14,317	4,359
Educational Services	17,300	-400	626	1,000	240	-1,040	1,778	-526	2,724	-724
Health Care and Social Assistance	114,600	600	2,977	8,338	2,123	-923	5,385	569	13,010	3,666
Leisure and Hospitality	92,200	1,400	1,149	3,112	3,575	-775	4,842	-2,544	9,886	-3,662
Arts, Entertainment, and Recreation	15,900	400	964	2,517	1,537	-737	3,022	-1,094	5,935	-901
Accommodation and Food Services	76,300	1,000	185	595	2,854	-854	3,251	-2,881	6,443	-5,253
Other Services	26,800	500	197	-621	1,503	-503	1,761	-1,367	2,190	-3,432

For information on Bureau of Labor Statistic confidence interval calculations, please visit:

[www.bls.gov/sae/790stderr.htm](http://www.bls.gov/sae/790stderr.htm)



# BLS CES

## PRELIMINARY AND FINAL ESTIMATE COMPARISON

February - 2024

NAICS	Category	Final	Preliminary	Change	%
00-000000	TOTAL NONFARM	854,600	853,684	916	0.1%
05-000000	TOTAL PRIVATE	719,200	718,360	840	0.1%
06-000000	GOODS PRODUCING	151,100	150,912	188	0.1%
07-000000	SERVICE PROVIDING, (INC. GOV)	703,500	702,772	728	0.1%
08-000000	PRIVATE SERVICE PROVIDING	568,100	567,448	652	0.1%
10-000000	NATURAL RESOURCES	4,200	4,151	49	1.2%
20-000000	CONSTRUCTION	68,700	68,725	(25)	0.0%
20-236000	CONSTRUCTION OF BUILDING	16,700	16,678	22	0.1%
20-236100	RESIDENTIAL BUILDING CONST.	9,600	9,604	(4)	0.0%
20-237000	HEAVY AND CIVIL CONST.	7,100	7,155	(55)	-0.8%
20-238000	SPECIALTY TRADE CONTRACTORS	44,900	44,892	8	0.0%
20-238100	FOUNDTN, STRCTRE, BLDING CONTRACT	11,200	11,236	(36)	-0.3%
20-238200	BUILDING EQUIPMENT CONTRACTORS	17,900	17,889	11	0.1%
20-238300	BUILDING FINISHING CONTRACTORS	8,400	8,370	30	0.4%
20-238900	OTHER SPECIALTY TRADE CONTRACTORS	7,400	7,397	3	0.0%
30-000000	MANUFACTURING	78,200	78,036	164	0.2%
31-000000	DURABLE GOODS	44,200	44,056	144	0.3%
31-334000	COMPUTER AND ELECT. MANUFACT.	10,700	10,660	40	0.4%
31-334100	COMPUTER AND PERIPH. MANUFACT.	1,700	1,657	43	2.6%
31-334400	SEMICONDUCTOR & OTHR ELECT. MANUF.	7,500	7,462	38	0.5%
32-000000	NONDURABLE GOODS	34,000	33,980	20	0.1%
32-311000	FOOD MANUFACTURING	22,600	22,603	(3)	0.0%
32-311400	FRUIT & VEGETABLE MANUFACTURING	7,900	7,928	(28)	-0.4%
40-000000	TRADE, TRANSPORTATION, & UTILITIES	160,300	160,241	59	0.0%
41-000000	WHOLESALE TRADE	35,600	35,553	47	0.1%
41-423000	MERCHANT WHLSALERS DUR. GDS	19,000	18,963	37	0.2%
41-424000	MERCHANT WHLSALERS NONDUR. GDS	14,800	14,828	(28)	-0.2%
42-000000	RETAIL TRADE	91,900	91,885	15	0.0%
42-441000	MOTOR VEHICLE AND PARTS DEALERS	14,800	14,748	52	0.4%
42-444000	BLDING MATERIALS & GARDEN SUPPLIES	9,700	9,754	(54)	-0.6%
42-445000	FOOD AND BEVERAGE STORES	17,200	17,161	39	0.2%
42-445100	GROCERY STORES	15,300	15,276	24	0.2%
42-452000	GENERAL MERCHANDISE STORES	18,600	18,559	41	0.2%
42-452200	DEPARTMENT STORES	4,000	3,996	4	0.1%
42-452300	OTHER GENERAL MERCHANDISE STORES	14,600	14,563	37	0.3%
43-000000	TRANSPORT., WRHOUSE, AND UTILITIES	32,800	32,803	(3)	0.0%
43-220000	UTILITIES	3,400	3,377	23	0.7%
43-400089	TRANSPORTATION AND WAREHOUSING	29,400	29,426	(26)	-0.1%
43-484000	TRUCK TRANSPORTATION	10,500	10,470	30	0.3%
43-484100	GENERAL FREIGHT TRUCKING	6,900	6,888	12	0.2%
50-000000	INFORMATION	9,400	9,396	4	0.0%
50-517000	TELECOMMUNICATIONS	2,200	2,230	(30)	-1.3%
55-000000	FINANCIAL ACTIVITIES	40,800	40,796	4	0.0%
55-520000	FINANCE AND INSURANCE	29,300	29,333	(33)	-0.1%
55-522000	CREDIT INTERMEDIATION ACTIVITIES	12,400	12,393	7	0.1%
55-524000	INSURANCE CARRIERS ACTIVITIES	13,700	13,660	40	0.3%
55-530000	REAL ESTATE AND RENTAL AND LEASING	11,500	11,463	37	0.3%
60-000000	PROFESSIONAL AND BUSINESS SERVICES	108,800	108,586	214	0.2%
60-540000	PROF., SCIENTIFIC, TECHNICAL SERVICES	52,900	52,991	(91)	-0.2%
60-541300	ARCHITECTURAL, ENGINEERING, SERVICES	9,400	9,305	95	1.0%
60-541700	SCIENTIFIC RESEARCH & DEVELOPMENT	8,800	8,757	43	0.5%
60-550000	MGMNT. OF COMPANIES & ENTERPRISES	8,600	8,563	37	0.4%
60-560000	ADMIN., SUPPORT, WASTE MGMNT SERV.	47,300	47,032	268	0.6%
60-561000	ADMINISTRATIVE, SUPPORT SERVICES	42,500	42,094	406	1.0%
60-561300	EMPLOYMENT SERVICES	13,500	13,422	78	0.6%
60-561400	BUSINESS SUPPORT SERVICES	7,800	7,703	97	1.3%
60-561420	TELEPHONE CALL CENTERS	5,700	5,701	(1)	0.0%
60-561700	SERVICES TO BUILDINGS AND DWELLINGS	13,300	13,133	167	1.3%
65-000000	EDUCATION AND HEALTH SERVICES	131,700	131,698	2	0.0%
65-610000	EDUCATIONAL SERVICES	17,700	17,467	233	1.3%
65-620000	HEALTH CARE AND SOCIAL SERVICES	114,000	114,231	(231)	-0.2%
65-621000	AMBULATORY HEALTH CARE	51,900	52,020	(120)	-0.2%
65-622000	HOSPITALS	27,900	27,939	(39)	-0.1%
65-622100	GENERAL MEDICAL AND SURGICAL	25,300	25,243	57	0.2%
65-623000	NURSING & RESIDENTIAL CARE FACILITIES	16,400	16,408	(8)	0.0%
65-624000	SOCIAL ASSISTANCE	17,800	17,864	(64)	-0.4%
70-000000	LEISURE AND HOSPITALITY	90,800	90,456	344	0.4%
70-710000	ARTS, ENTERTAINMENT, RECREATION	15,500	15,490	10	0.1%
70-713000	AMUSEMENT GAMBLING, RECREATION	13,100	13,052	48	0.4%
70-713900	OTHER AMUSEMENT & RECREATION IND.	11,400	11,341	59	0.5%
70-720000	ACCOMMODATION AND FOOD SERVICES	75,300	74,966	334	0.4%
70-721000	ACCOMMODATIONS	10,900	10,809	91	0.8%
70-722000	FOOD SERVICE AND DRINKING PLACES	64,400	64,157	243	0.4%
70-722511	FULL SERVICE RESTAURANTS	24,700	24,408	292	1.2%
70-722590	LIMITED SERVICE RESTAURANTS	34,300	34,333	(33)	-0.1%
80-000000	OTHER SERVICES	26,300	26,275	25	0.1%
80-811000	REPAIR AND MAINTENANCE	8,600	8,594	6	0.1%
80-811100	AUTOMOTIVE REPAIR & MAINTENANCE	6,300	6,310	(10)	-0.2%
90-000000	TOTAL GOVERNMENT	135,400	135,324	76	0.1%
90-910000	FEDERAL GOVERNMENT	13,600	13,601	(1)	0.0%
90-940000	STATE AND LOCAL GOVERNMENT	121,800	#N/A	#N/A	#N/A
90-920000	STATE GOVERNMENT	34,300	34,296	4	0.0%
90-921611	STATE EDUCATION	19,000	18,969	31	0.2%
90-929999	STATE ADMINISTRATION	15,300	15,327	(27)	-0.2%
90-930000	LOCAL GOVERNMENT	87,500	87,427	73	0.1%
90-931611	LOCAL EDUCATION	47,600	47,526	74	0.2%
90-939999	LOCAL ADMINISTRATION	39,900	39,901	(1)	0.0%