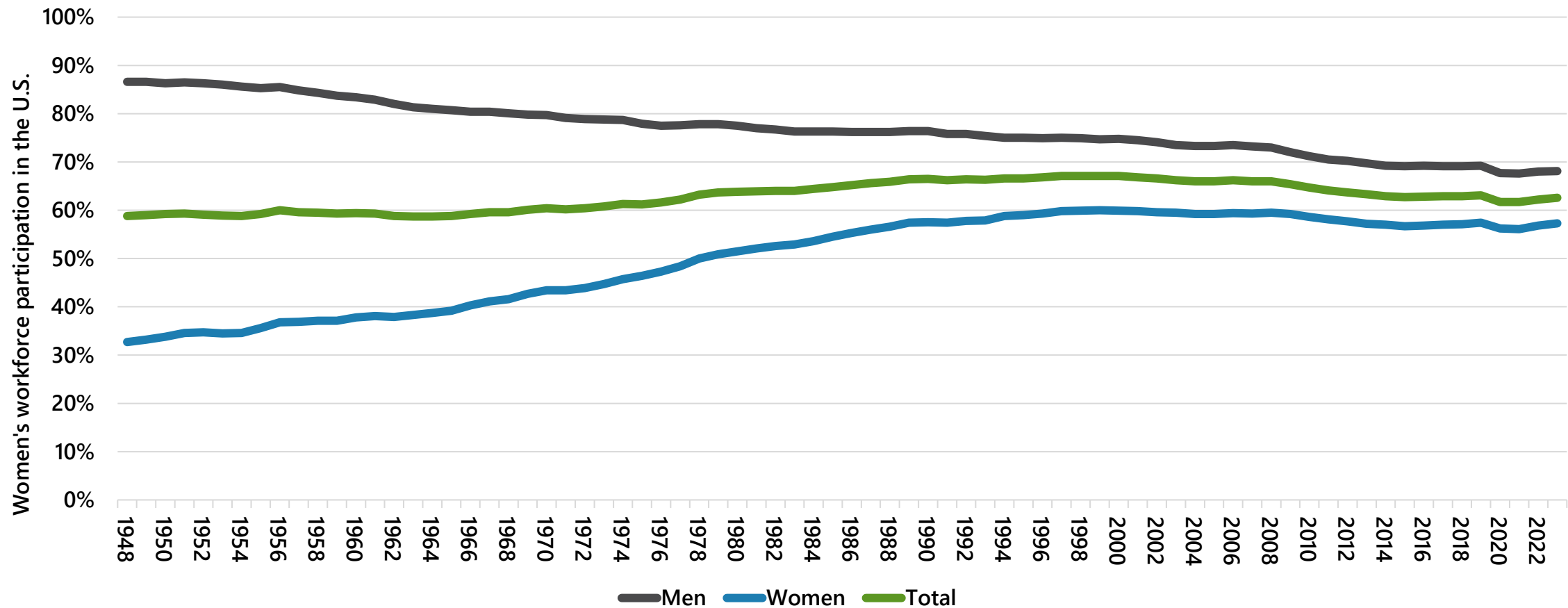


Child care and workforce participation



Brandon Duong, labor economist
April 8, 2025

Workforce participation

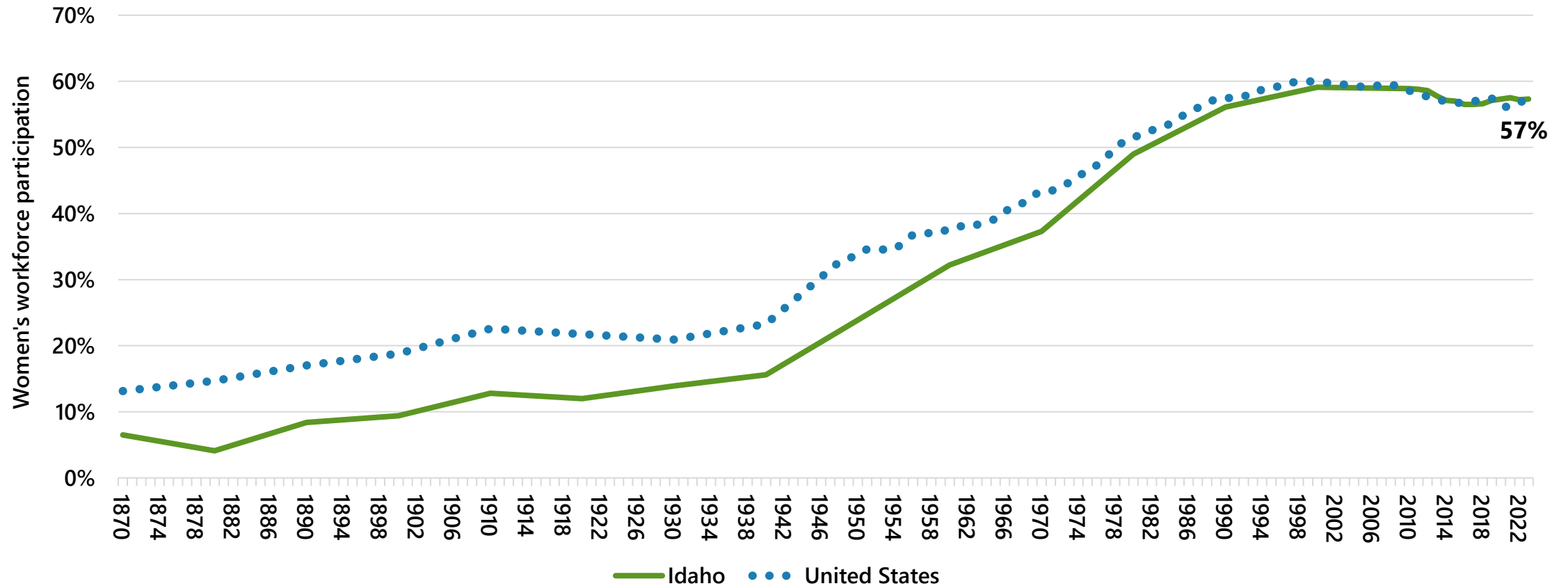


Source: American Community Survey, Current Population Survey, Decennial Census, IPUMS sample

imi.idaho.gov

IDAHO
DEPARTMENT OF LABOR

Women's workforce participation



Source: American Community Survey, Current Population Survey, Decennial Census, IPUMS sample

imi.idaho.gov

IDAHO
DEPARTMENT OF LABOR

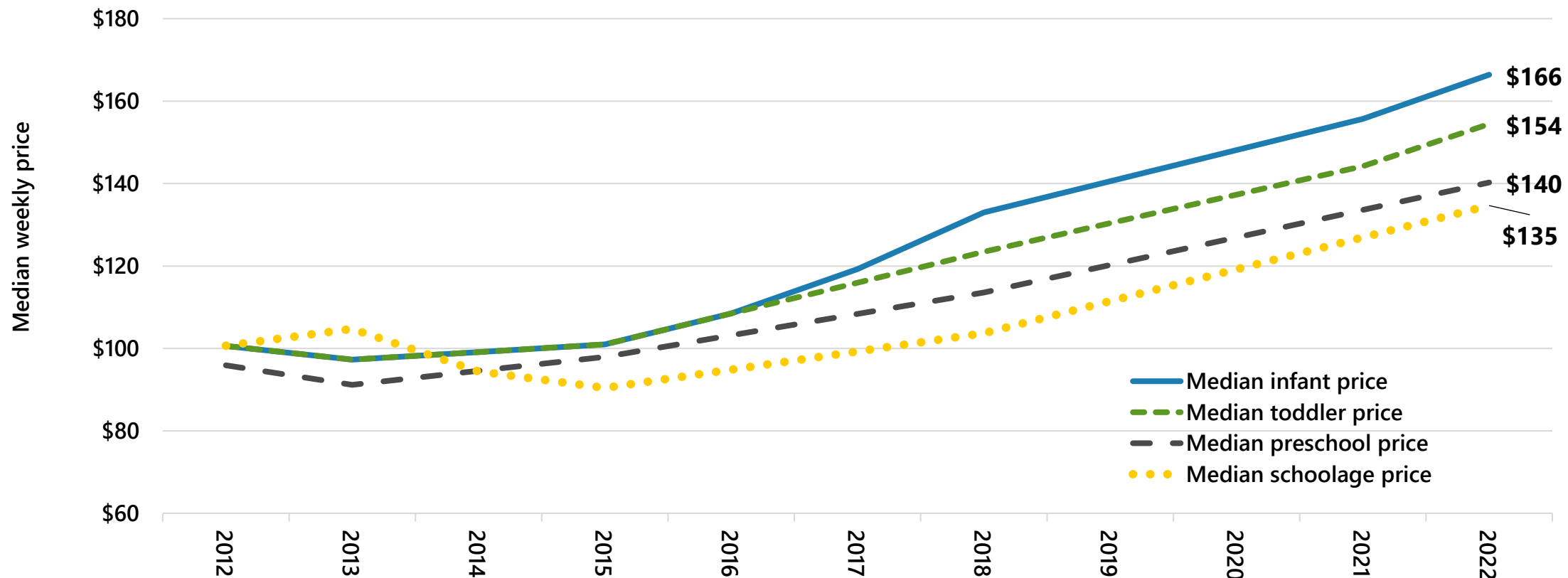
Trivia

- What percent of couples with children in the U.S. both work?
 - A. 40%
 - B. 50%
 - C. 60%
 - D. 70%

Most parents work

- 63% of married couples with children are both employed in the U.S.
- Where do children of working parents go?
 1. Stay at home with a parent (55% in Idaho).
 2. Care from relatives (26% in Idaho).
 3. Daycare center (12% in Idaho).
- How are most parents employed and staying at home?
- Why are daycare centers so unpopular?

Idaho cost of child care

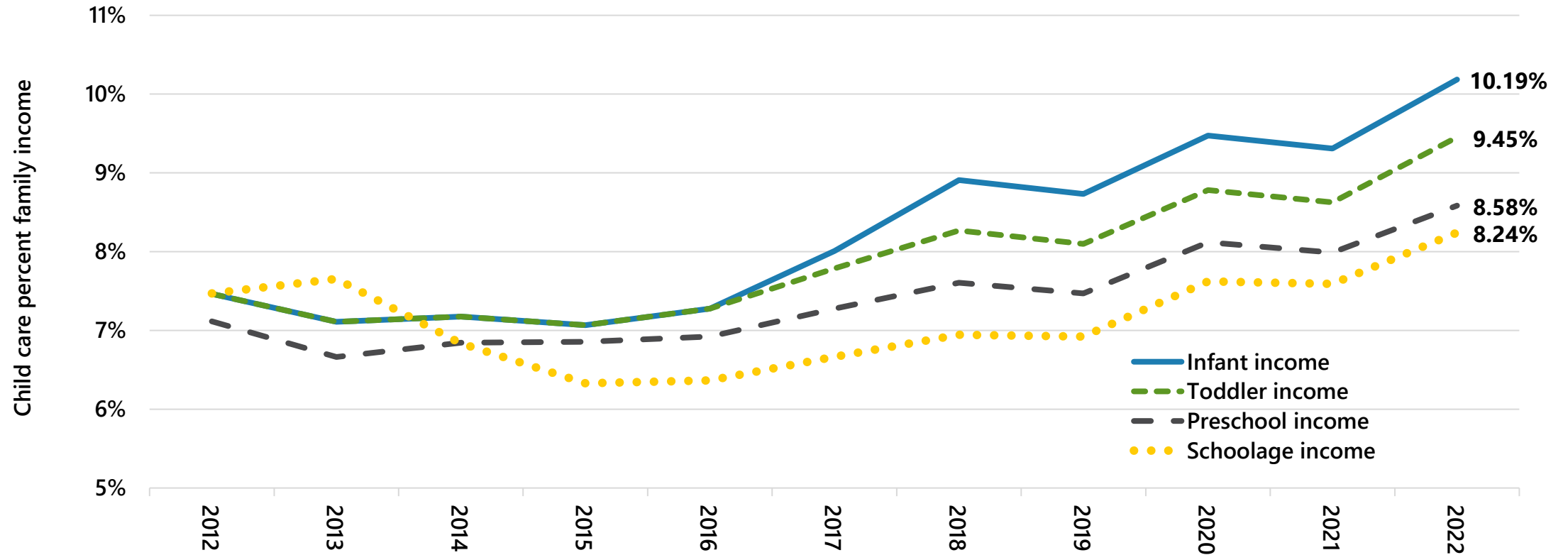


Source: U.S. Department of Labor National Database of Childcare Prices

imi.idaho.gov

IDAHO
DEPARTMENT OF LABOR

Idaho cost of child care



Source: U.S. Department of Labor National Database of Childcare Prices

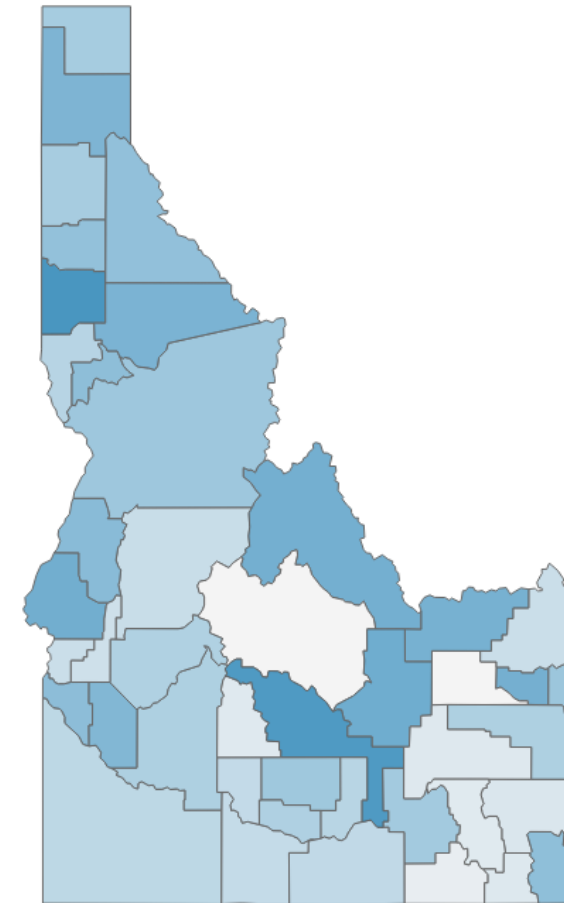
imi.idaho.gov

IDAHO
DEPARTMENT OF LABOR

Cost of child care

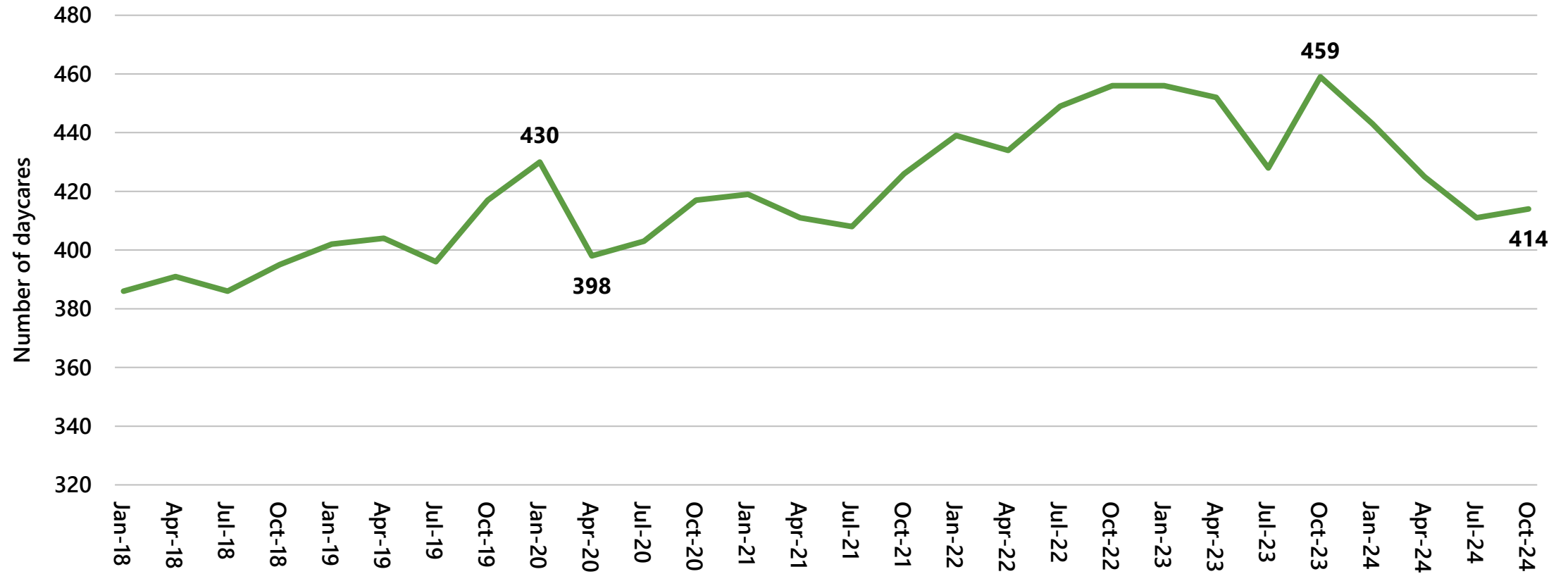
Percent of income (2022)

- Highs
 - Latah County – **10.9%**
 - Blaine County – **10.7%**
 - Washington County – **9.7%**
- Lows
 - Custer County – **6.7%**
 - Jefferson County – **6.7%**
 - Oneida County – **6.9%**
- Latah County is urban, and the highest, but other urban counties are low like Bannock County.



Percent of household income to child care
6.7% 10.9%

Daycares in Idaho

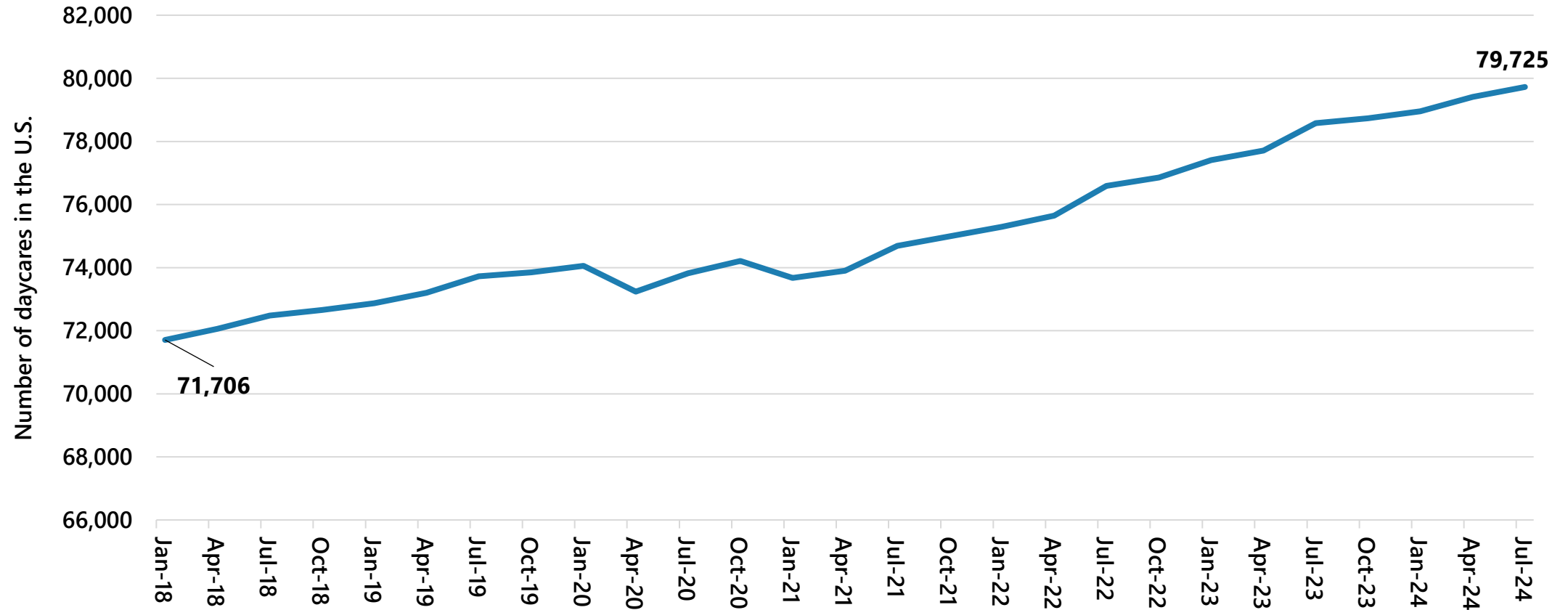


Source: Idaho Department of Labor

imi.idaho.gov



Daycares in the United States

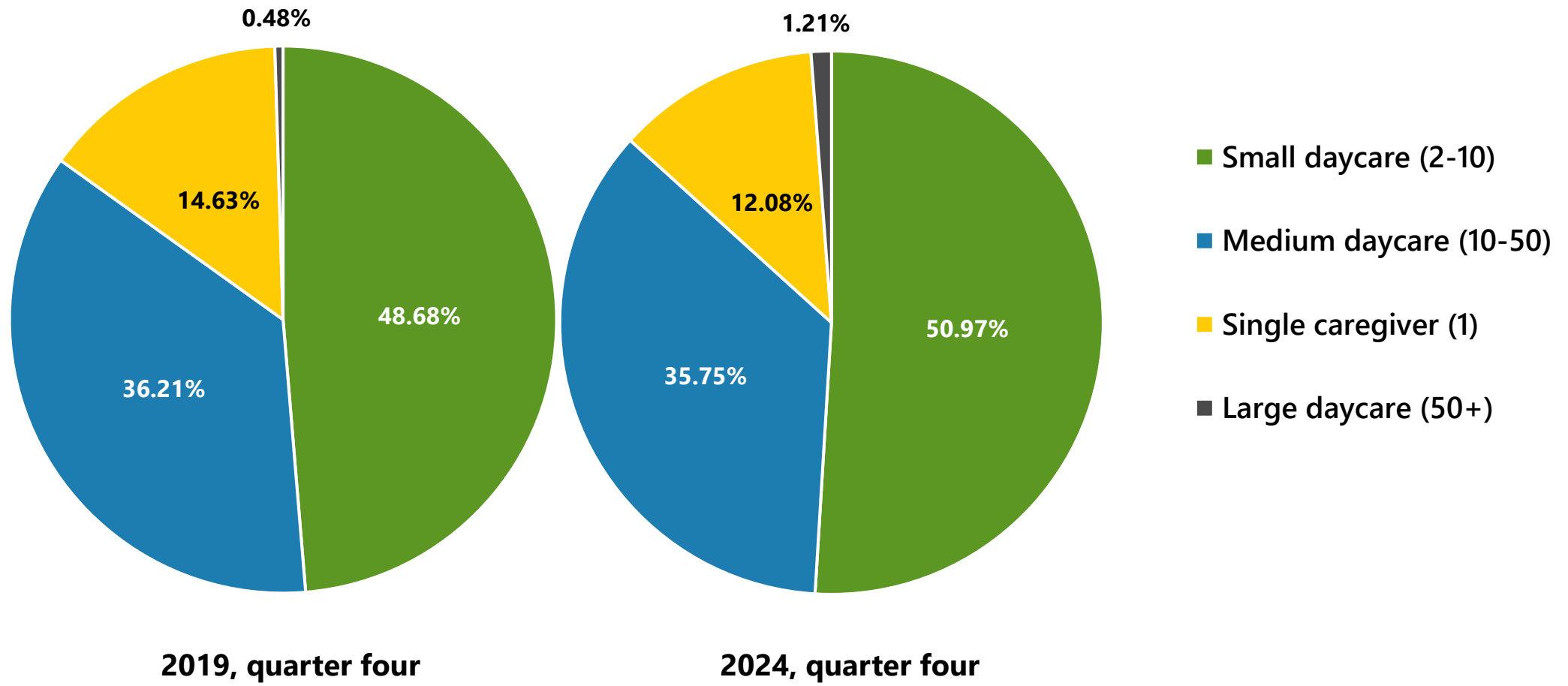


Source: U.S. Bureau of Labor Statistics

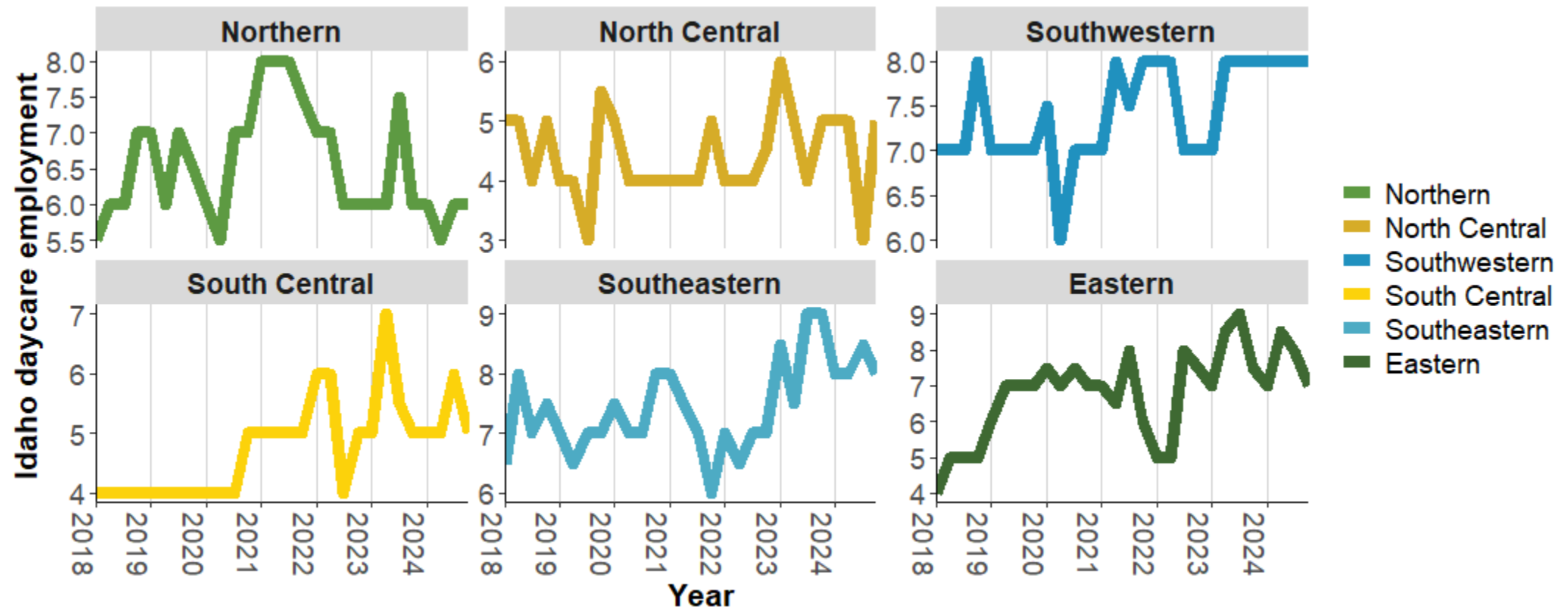
lmi.idaho.gov



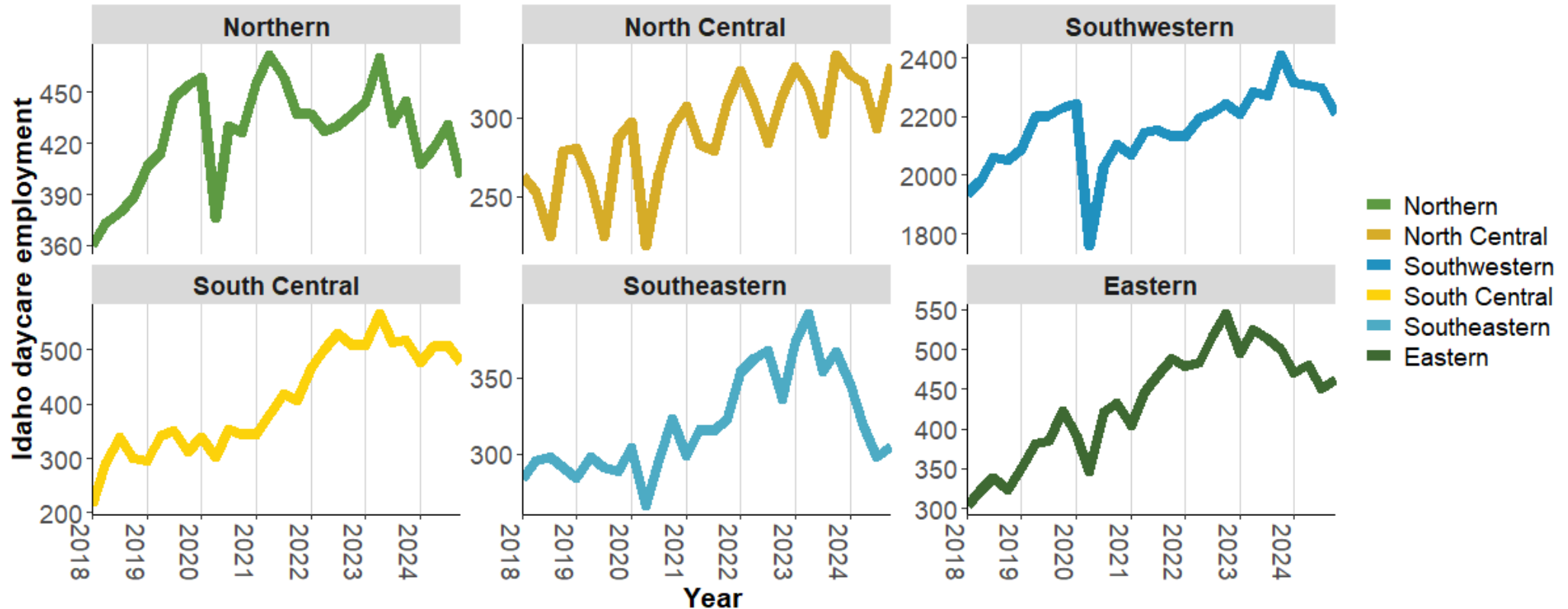
Daycare employment



Daycare median employment by region



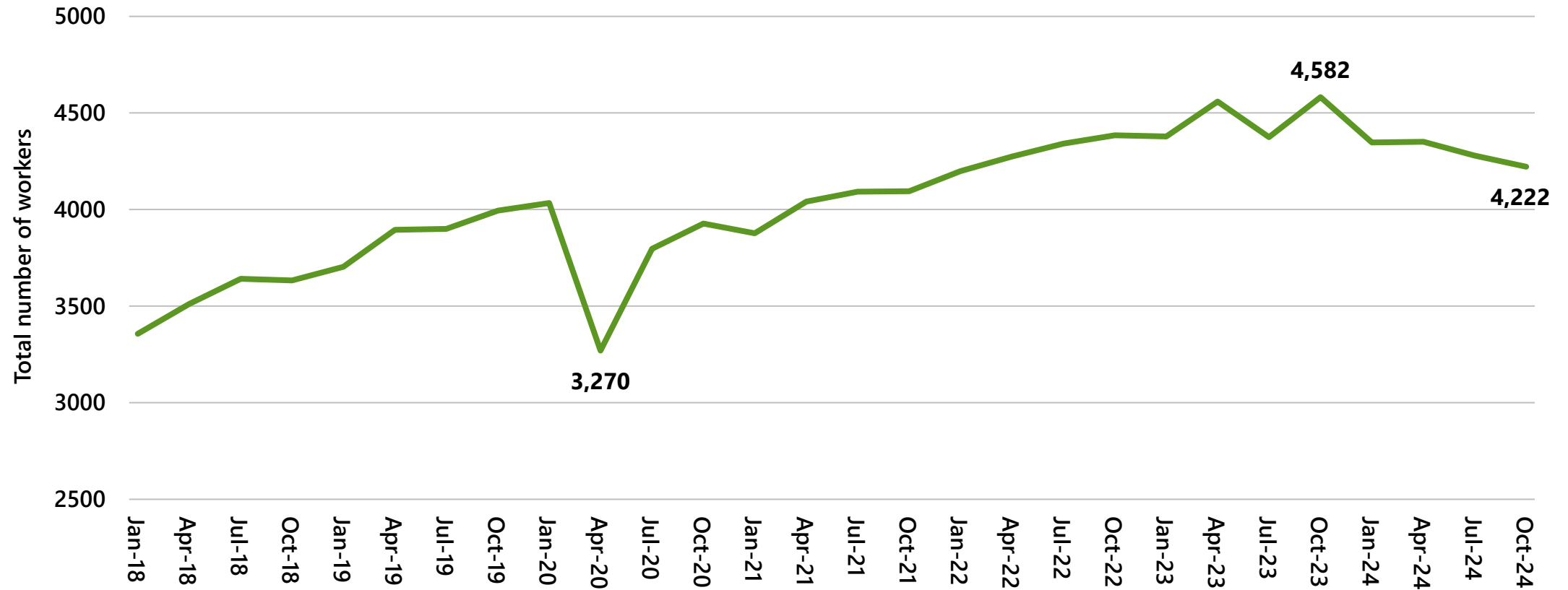
Daycare total employment by region



Source: Idaho Department of Labor

imi.idaho.gov

Total number of child care workers in Idaho



Source: Idaho Department of Labor

imi.idaho.gov



Trivia

- How many people in Idaho had to alter work arrangements due to lack of childcare last year?
 - A. 22,000
 - B. 56,000
 - C. 71,000
 - D. 94,000

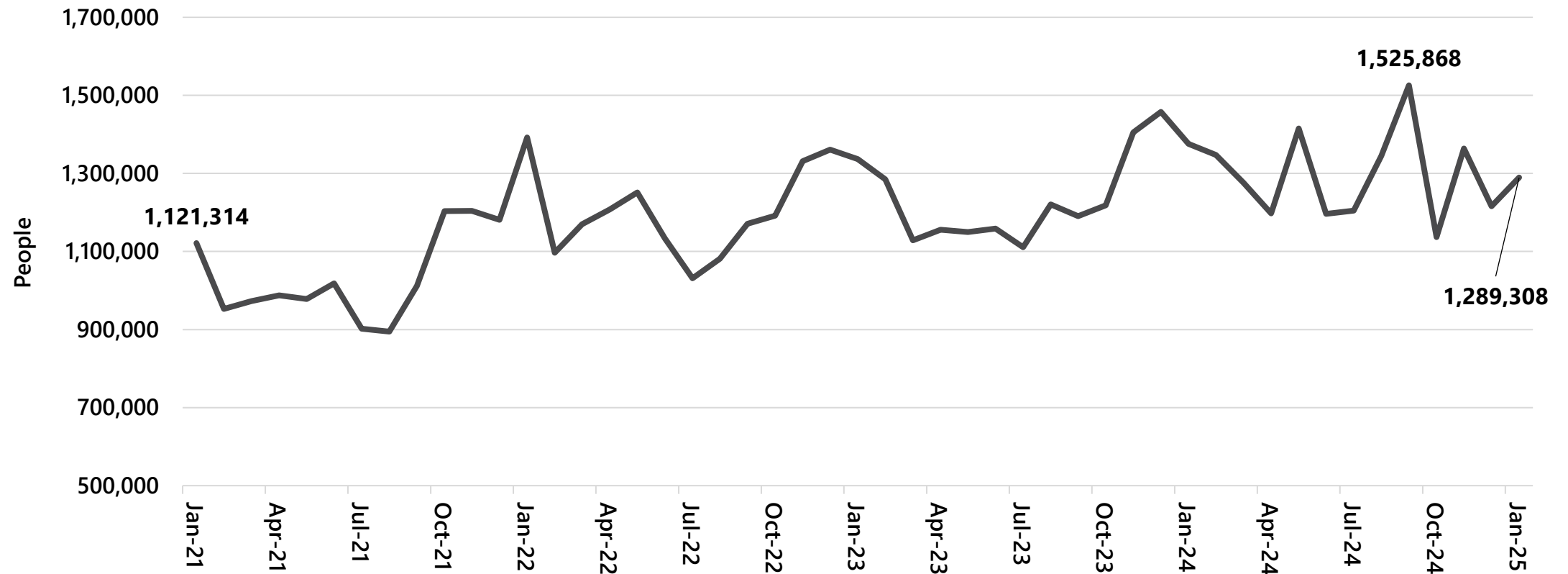
Impact of childcare decline in 2024

How are parents both employed and taking care of their children without child care?

- 22,000 parents in Idaho cut work hours.
- 19,000 parents took unpaid leave.
- 14,000 parents used vacation or sick leave.
- 25,000 parents left or lost a job (compared to 5,000 in 2023).

36,000 women and 20,000 men altered work arrangements in some way.

Number of people with part time work due to child care issues in the U.S.

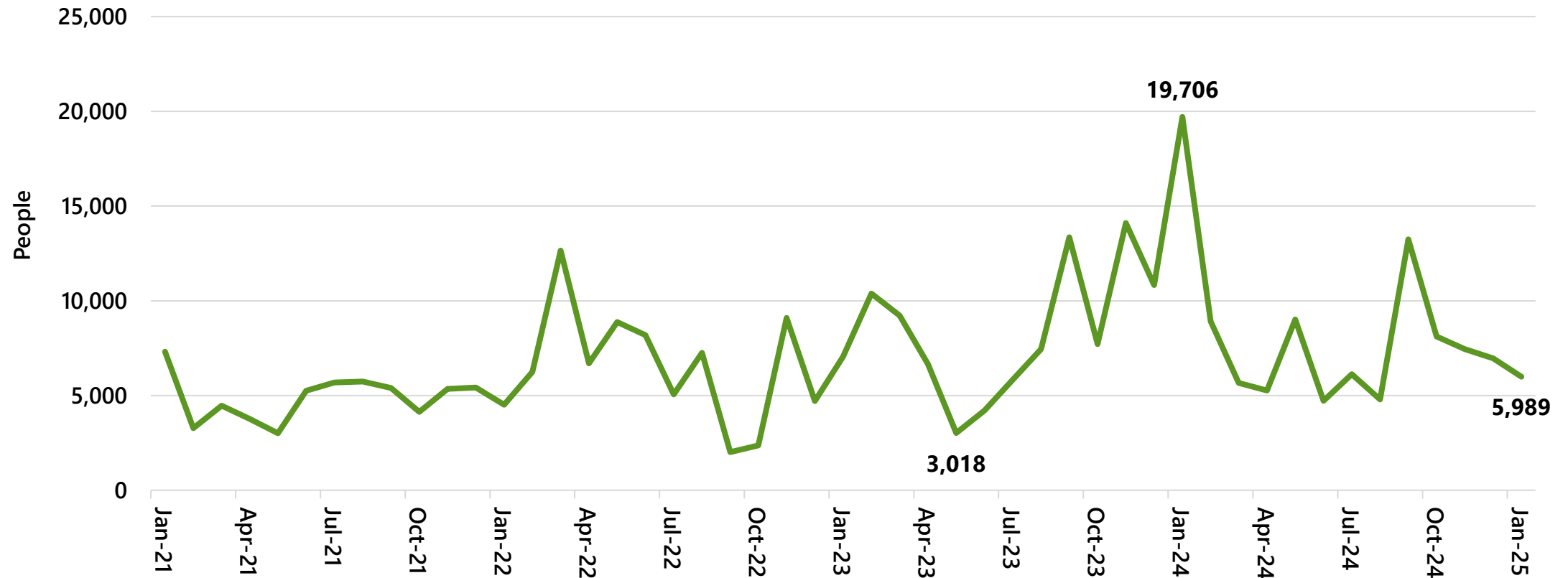


Source: Integrated public use microdata set for Current Population Survey

imi.idaho.gov

IDAHO
DEPARTMENT OF LABOR

Number of Idahoans with part time work due to child care issues

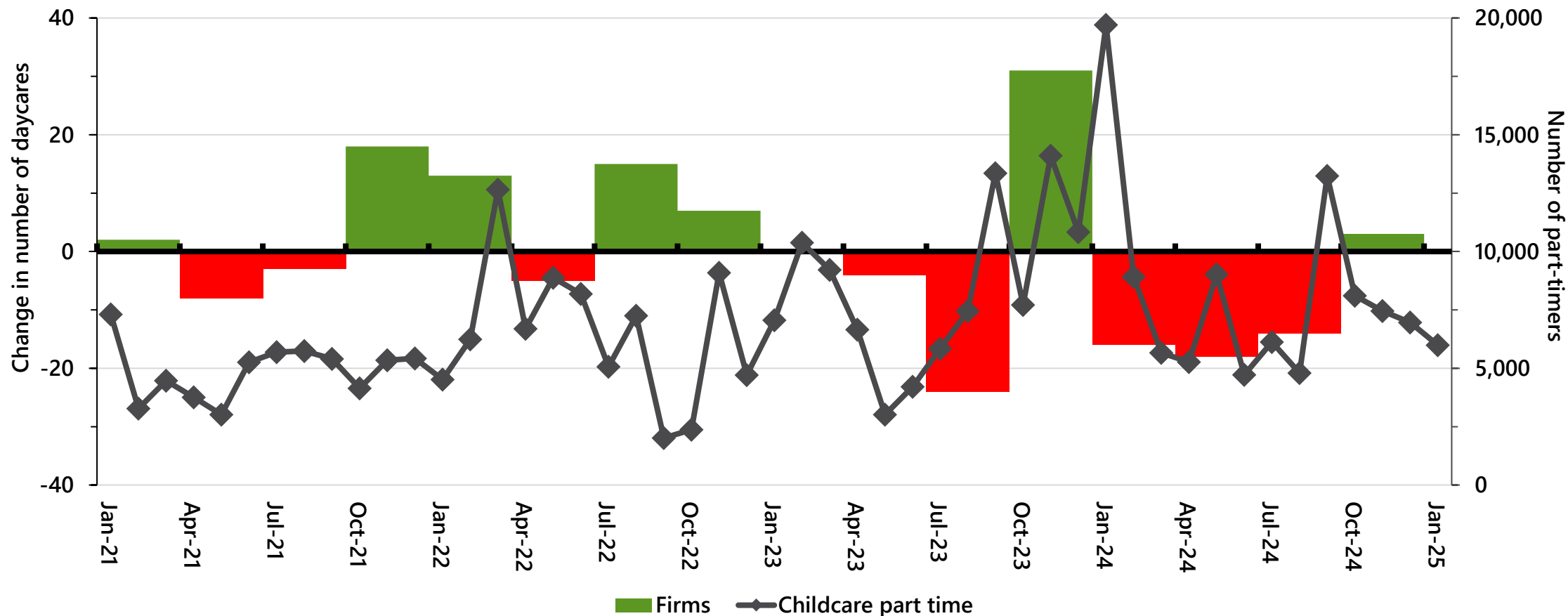


Source: Integrated public use microdata set for Current Population Survey

imi.idaho.gov

IDAHO
DEPARTMENT OF LABOR

Part time work and change in daycares

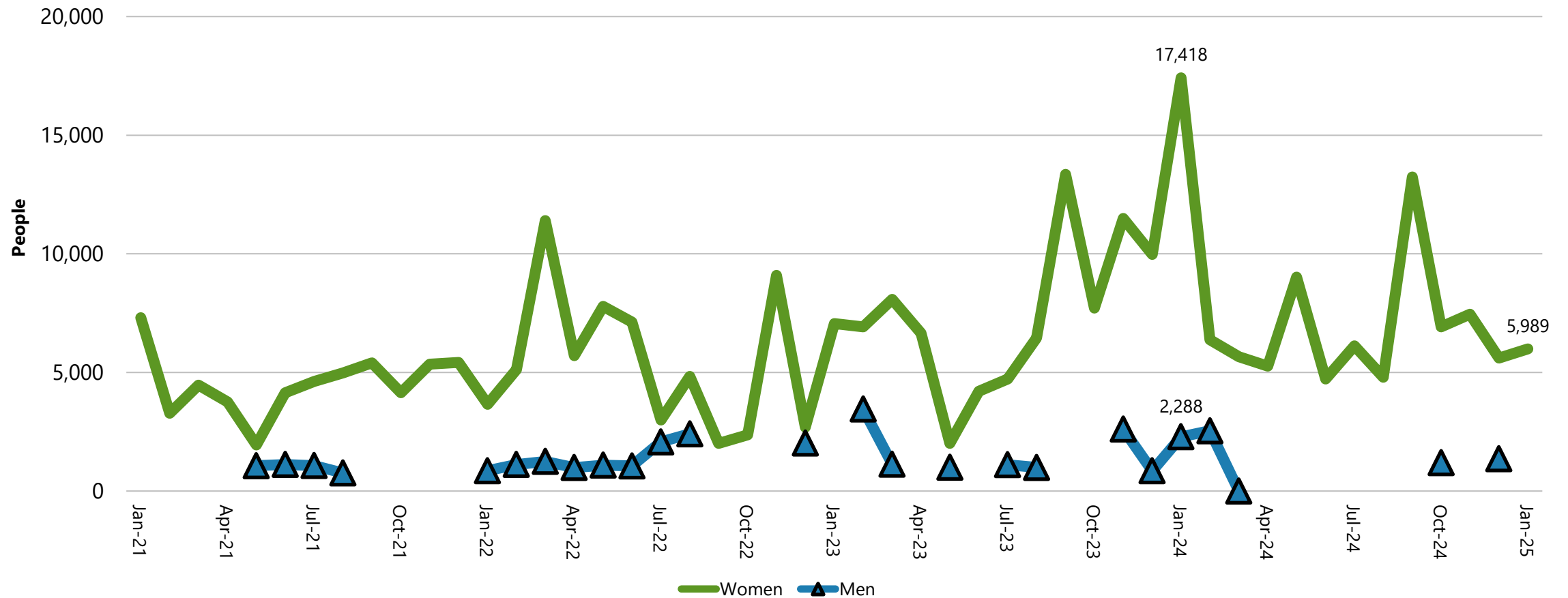


Source: Integrated public use microdata set for Current Population Survey, Idaho Department of Labor

imi.idaho.gov

IDAHO
DEPARTMENT OF LABOR

Number of Idahoans with part time work due to child care issues

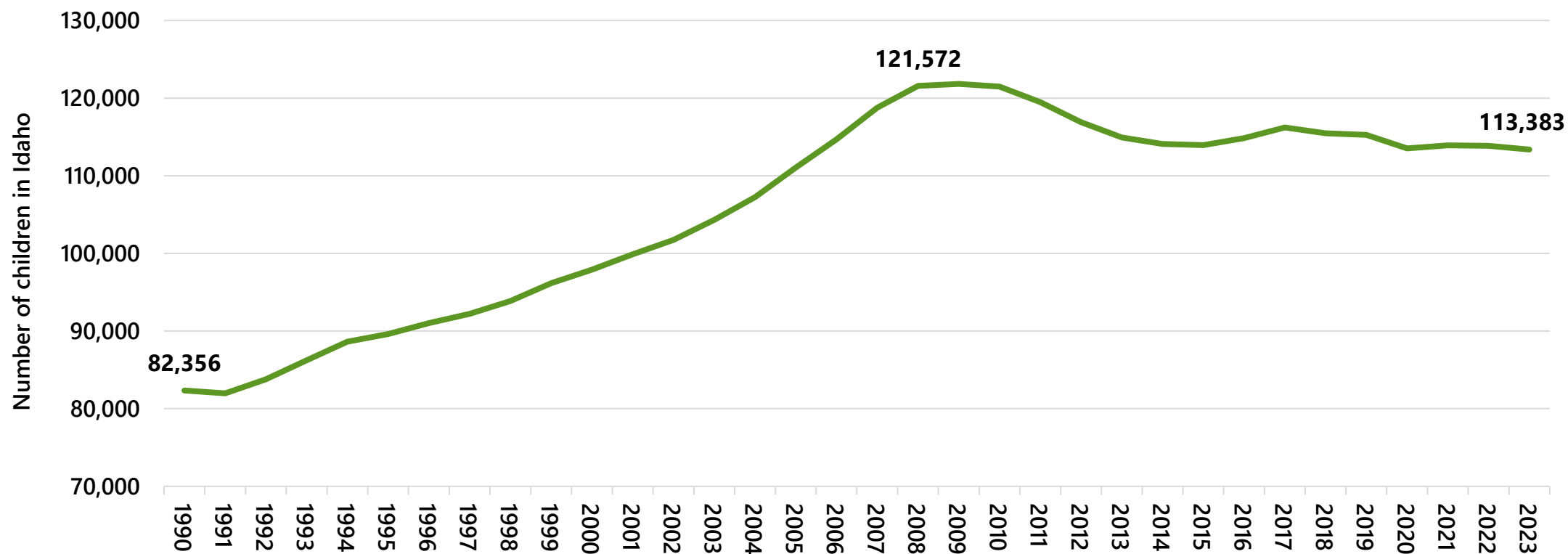


Source: IPUMS - CPS

imi.idaho.gov

IDAHO
DEPARTMENT OF LABOR

Number of children under five in Idaho



Source: PRB analysis of Census Bureau data via the Annie E. Casey Foundation "Kids Count Data Center"

imi.idaho.gov

IDAHO
DEPARTMENT OF LABOR

Conclusion

- Daycares are feeling an enrollment squeeze with rising prices.
- Parents are making decisions to opt. out of daycare and instead alter their work schedule.
- This aggravates the already tight labor market and deprives parents of career advancement and businesses of employees.

Thank you. Any questions?

Need more information?

Contact: **brandon.duong@labor.idaho.gov**