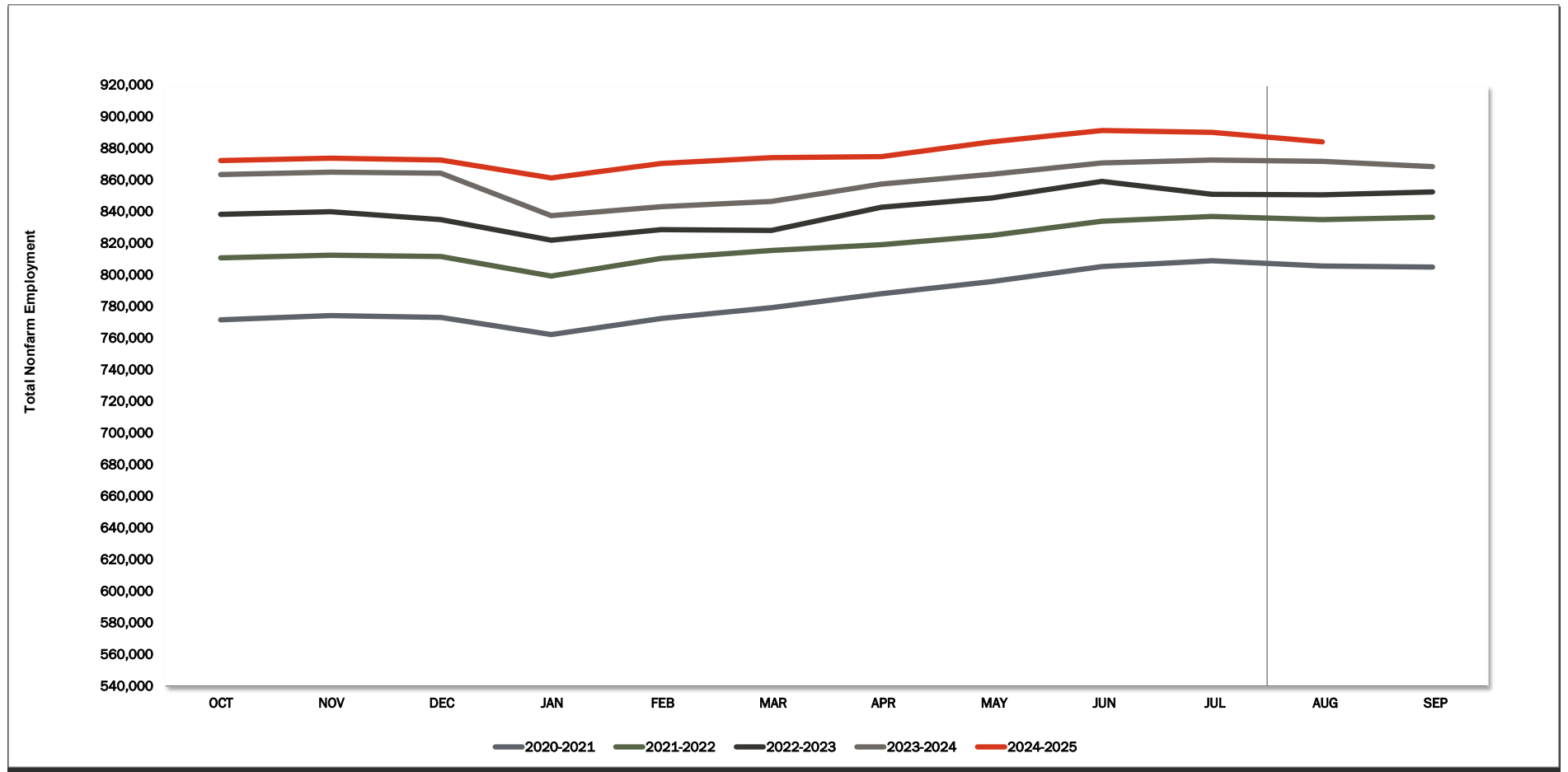
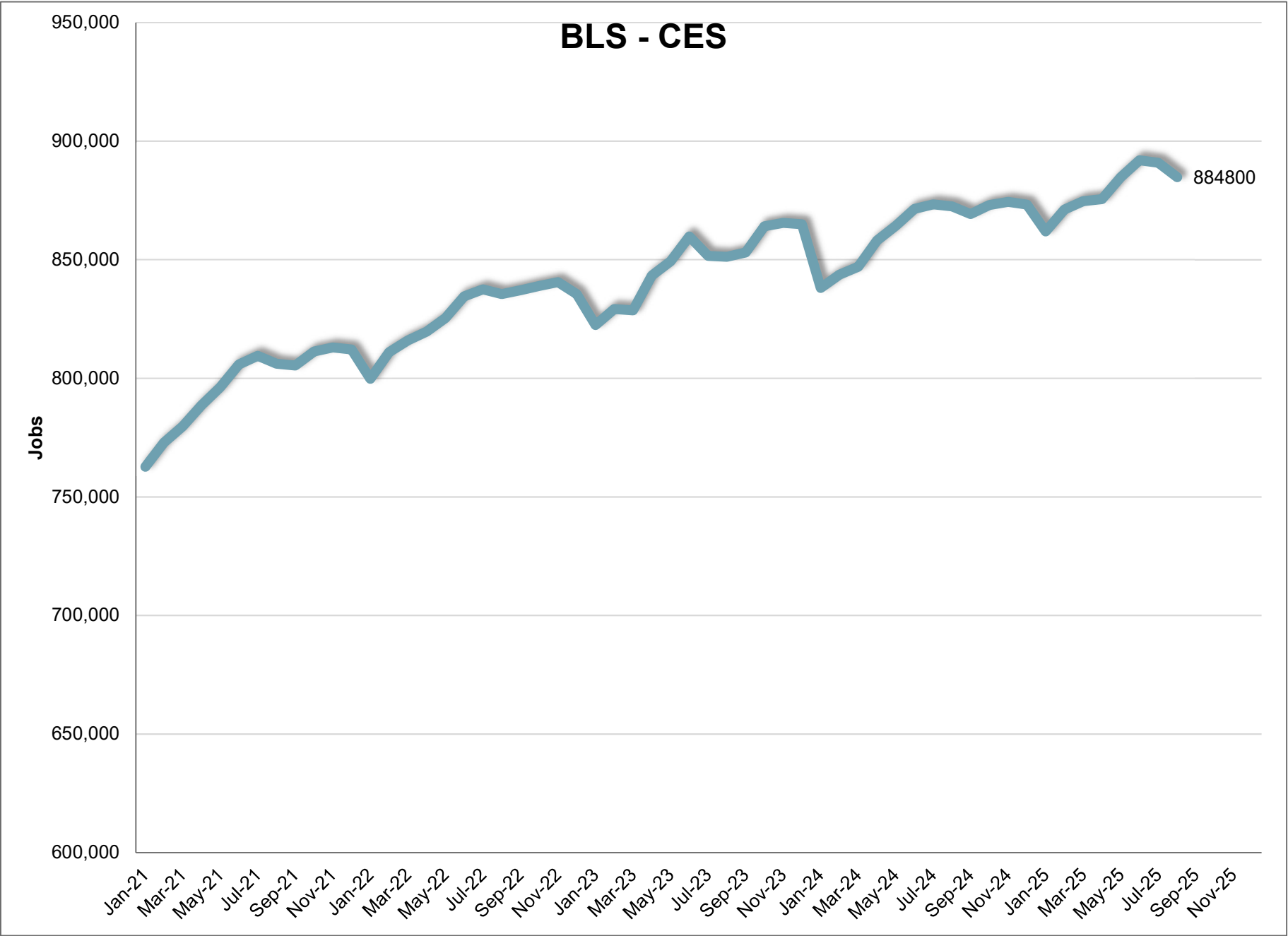


BLS CES



	JAN	FEB	MAR	APR	MAY	JUN	JUL	AUG	SEP	OCT	NOV	DEC	12 Mth Avg
2019	733,800	741,400	745,400	752,900	762,600	769,300	767,200	767,000	767,600	772,200	772,300	770,100	760,200
2020	757,400	763,800	766,400	692,500	723,300	749,700	759,000	762,200	767,300	772,000	774,600	773,500	755,100
2021	762,700	772,900	779,700	788,600	796,200	805,800	809,500	806,100	805,400	811,300	813,000	812,100	796,900
2022	799,700	811,000	815,900	819,700	825,400	834,500	837,500	835,500	837,100	838,900	840,500	835,500	827,600
2023	822,400	829,200	828,600	843,300	849,300	859,800	851,600	851,200	853,000	864,100	865,500	864,900	848,600
2024	838,100	843,700	847,000	858,100	864,300	871,400	873,300	872,500	869,200	873,000	874,400	873,200	863,200
2025	861,900	871,100	874,700	875,500	884,800	892,000	890,900	884,800					
Mnth-Mnth % Change													
2024	-3.1%	0.7%	0.4%	1.3%	0.7%	0.8%	0.2%	-0.1%	-0.4%	0.4%	0.2%	-0.1%	
2025	-1.3%	1.1%	0.4%	0.1%	1.1%	0.8%	-0.1%	-0.7%					
5-MTM Avg	-1.8%	1.0%	0.4%	-1.0%	1.5%	1.6%	0.3%	-0.1%					
Year-Year % Change													Avg
2024	1.9%	1.7%	2.2%	1.8%	1.8%	1.3%	2.5%	2.5%	1.9%	1.0%	1.0%	1.0%	1.7%
2025	2.8%	3.2%	3.3%	2.0%	2.4%	2.4%	2.0%	1.4%					
5-YTY Avg	2.7%	2.6%	2.6%	2.9%	2.7%	2.6%	2.7%	2.6%					



August 2025

Current Employment Statistics

Confidence Interval Bounds of Selected Month's Estimate

Industry Title	Current Month	Estimated Change			Confidence Interval Bounds of Selected Month's Estimate					
		1 Month	3 Month	12 Month	1 Month		3 Month		12 Month	
		+	-		+	-	+	-	+	-
Total Nonfarm	884,800	-6,100	0	12,300	-1,695	-10,505	7,348	-7,348	26,134	-1,534
Total Private	762,400	-6,700	6,000	14,200	-2,351	-11,049	13,251	-1,251	27,839	561
Goods Producing	160,200	-1,500	0	5,200	477	-3,477	3,287	-3,287	11,415	-1,015
Private Service Providing	602,200	-5,200	6,000	9,000	-1,328	-9,072	12,463	-463	21,142	-3,142
Mining and Logging	4,600	0	200	0	179	-179	532	-132	716	-716
Mining, Logging, and Construction	84,000	-500	1,500	4,800	1,051	-2,051	4,025	-1,025	9,391	209
Construction	79,400	-500	1,300	4,800	1,041	-2,041	3,804	-1,204	9,335	265
Manufacturing	76,200	-1,000	-1,500	400	226	-2,226	604	-3,604	4,588	-3,788
Durable Goods	43,700	-700	-800	600	303	-1,703	904	-2,504	3,918	-2,718
Non-Durable Goods	32,500	-300	-700	-200	404	-1,004	534	-1,934	2,356	-2,756
Trade, Transportation, and Utilities	163,500	-200	900	-1,300	1,450	-1,850	3,708	-1,908	3,918	-6,518
Wholesale Trade	34,400	-200	-300	-2,200	504	-904	865	-1,465	128	-4,528
Retail Trade	94,900	100	700	400	1,245	-1,045	2,588	-1,188	3,808	-3,008
Transportation and Utilities	34,200	-100	500	500	857	-1,057	2,221	-1,221	3,691	-2,691
Information	9,100	0	-100	0	266	-266	374	-574	1,046	-1,046
Financial Activities	42,600	-700	-500	900	-34	-1,366	648	-1,648	3,356	-1,556
Professional and Business Services	112,900	-2,200	400	400	-384	-4,016	3,424	-2,624	6,271	-5,471
Professional, Scientific, and Technical Services	55,100	-900	-1,800	1,300	-175	-1,625	-570	-3,030	3,863	-1,263
Management of Companies and Enterprises	9,000	0	100	200	145	-145	365	-165	777	-377
Administrative and Support and Waste Managem	48,800	-1,300	2,100	-1,100	358	-2,958	4,849	-649	4,151	-6,351
Education and health services	135,800	-1,200	-2,200	1,000	452	-2,852	470	-4,870	5,979	-3,979
Educational Services	15,100	-800	-2,200	1,700	-160	-1,440	-1,049	-3,352	3,424	-24
Health Care and Social Assistance	120,700	-400	0	-700	1,123	-1,923	2,408	-2,408	3,972	-5,372
Leisure and Hospitality	106,500	-700	7,800	5,900	1,475	-2,875	11,493	4,107	12,674	-874
Arts, Entertainment, and Recreation	19,100	-900	2,600	900	237	-2,037	4,658	542	4,318	-2,518
Accommodation and Food Services	87,400	200	5,200	5,000	2,054	-1,654	8,266	2,134	10,848	-848
Other Services	31,800	-200	-300	2,100	803	-1,203	1,264	-1,864	4,911	-711

For information on Bureau of Labor Statistic confidence interval calculations, please visit:

www.bls.gov/sae/790stderr.htm

BLS CES

August		2025								
NAICS	Category	AUG	JUL	AUG-2024	Change	%	5 Yr Avg	Yr-to-Yr Change	%	5 Yr Avg
00-000000	Total Nonfarm	884,800	890,900	872,500	-6,100	-0.7%	-0.1%	12,300	1.4%	2.6%
05-000000	Total Private	762,400	769,100	748,200	-6,700	-0.9%	-0.2%	14,200	1.9%	3.0%
06-000000	Goods Producing	160,200	161,700	155,000	-1,500	-0.9%	0.0%	5,200	3.4%	3.7%
07-000000	Service Providing, (Inc. Gov)	724,600	729,200	717,500	-4,600	-0.6%	-0.1%	7,100	1.0%	2.4%
08-000000	Private Service Providing	602,200	607,400	593,200	-5,200	-0.9%	-0.3%	9,000	1.5%	2.8%
10-000000	Natural Resources	4,600	4,600	4,600	0	0.0%	0.5%	0	0.0%	2.4%
20-000000	Construction	79,400	79,900	74,600	-500	-0.6%	0.2%	4,800	6.4%	5.8%
20-236000	Construction of Buildings	18,400	18,600	17,400	-200	-1.1%	-0.3%	1,000	5.7%	5.3%
20-236100	Residential Building Const.	10,600	10,700	10,100	-100	-0.9%	-0.4%	500	5.0%	5.5%
20-237000	Heavy And Civil Const.	8,900	8,900	8,500	0	0.0%	0.5%	400	4.7%	4.6%
20-238000	Specialty Trade Contractors	52,100	52,400	48,700	-300	-0.6%	0.2%	3,400	7.0%	6.3%
20-238100	Foundtn, Strctre, Bldng Contract	13,000	13,000	12,100	0	0.0%	-0.4%	900	7.4%	5.2%
20-238200	Building Equipment Contractors	20,200	20,300	18,700	-100	-0.5%	0.6%	1,500	8.0%	7.8%
20-238300	Building Finishing Contractors	9,300	9,400	8,900	-100	-1.1%	0.0%	400	4.5%	4.1%
20-238900	Other Specialty Trade Contractors	9,600	9,700	9,000	-100	-1.0%	0.5%	600	6.7%	7.1%
30-000000	Manufacturing	76,200	77,200	75,800	-1,000	-1.3%	-0.2%	400	0.5%	1.8%
31-000000	Durable Goods	43,700	44,400	43,100	-700	-1.6%	-0.3%	600	1.4%	1.6%
31-334000	Computer And Elect. Manufact.	10,900	11,000	10,500	-100	-0.9%	-0.3%	400	3.8%	-2.9%
31-334100	Computer And Periph. Manufact.	1,300	1,300	1,300	0	0.0%	-1.2%	0	0.0%	-9.7%
31-334400	Semiconductor & Othr Elect. Manuf.	8,000	8,100	7,800	-100	-1.2%	-0.5%	200	2.6%	-2.7%
32-000000	Nondurable Goods	32,500	32,800	32,700	-300	-0.9%	0.0%	-200	-0.6%	2.2%
32-311000	Food Manufacturing	21,400	21,700	21,400	-300	-1.4%	-0.1%	0	0.0%	2.3%
32-311400	Fruit & Vegetable Manufacturing	7,600	7,700	7,700	-100	-1.3%	-0.8%	-100	-1.3%	2.0%
40-000000	Trade, Transportation, & Utilities	163,500	163,700	164,800	-200	-0.1%	0.5%	-1,300	-0.8%	2.5%
41-000000	Wholesale Trade	34,400	34,600	36,600	-200	-0.6%	0.1%	-2,200	-6.0%	3.2%
41-423000	Merchant Whlsalers Dur. Gds	18,800	18,900	20,000	-100	-0.5%	0.0%	-1,200	-6.0%	4.1%
41-424000	Merchant Whlsalers Nondur. Gds	14,000	14,100	15,000	-100	-0.7%	0.3%	-1,000	-6.7%	2.8%
42-000000	Retail Trade	94,900	94,800	94,500	100	0.1%	0.3%	400	0.4%	1.4%
42-441000	Motor Vehicle And Parts Dealers	15,400	15,300	15,200	100	0.7%	0.4%	200	1.3%	1.4%
42-444000	Bldng Materials & Garden Supplies	10,400	10,600	10,600	-200	-1.9%	-2.2%	-200	-1.9%	3.0%
42-445000	Food And Beverage Stores	17,700	17,600	17,500	100	0.6%	0.6%	200	1.1%	2.9%
42-445100	Grocery Stores	15,600	15,500	15,400	100	0.6%	0.4%	200	1.3%	2.7%
42-452000	General Merchandise Stores	18,700	18,500	18,700	200	1.1%	-0.1%	0	0.0%	2.9%
42-452200	Department Stores	3,700	3,600	3,900	100	2.8%	1.0%	-200	-5.1%	2.0%
42-452300	Other General Merchandise Stores	15,000	14,900	14,800	100	0.7%	-0.4%	200	1.4%	3.3%
43-000000	Transport., Wrhse, And Utilities	34,200	34,300	33,700	-100	-0.3%	1.3%	500	1.5%	5.4%
43-220000	Utilities	3,500	3,500	3,500	0	0.0%	0.0%	0	0.0%	3.2%
43-400089	Transportation And Warehousing	30,700	30,800	30,200	-100	-0.3%	1.4%	500	1.7%	5.7%
43-484000	Truck Transportation	10,400	10,500	10,500	-100	-1.0%	0.2%	-100	-1.0%	-0.2%
43-484100	General Freight Trucking	7,000	7,000	7,000	0	0.0%	0.3%	0	0.0%	-0.2%
50-000000	Information	9,100	9,100	9,100	0	0.0%	0.0%	0	0.0%	2.5%
50-517000	Telecommunications	2,300	2,300	2,300	0	0.0%	0.0%	0	0.0%	2.9%
55-000000	Financial Activities	42,600	43,300	41,700	-700	-1.6%	-0.1%	900	2.2%	2.3%
55-520000	Finance And Insurance	30,500	31,000	29,800	-500	-1.6%	0.1%	700	2.3%	1.6%
55-522000	Credit Intermediation Activities	12,700	12,900	12,300	-200	-1.6%	-0.1%	400	3.3%	0.5%
55-524000	Insurance Carriers Activities	14,300	14,500	14,000	-200	-1.4%	0.0%	300	2.1%	2.2%
55-530000	Real Estate And Rental And Leasing	12,100	12,300	11,900	-200	-1.6%	-0.6%	200	1.7%	4.3%
60-000000	Professional And Business Services	112,900	115,100	112,500	-2,200	-1.9%	0.0%	400	0.4%	2.3%
60-540000	Prof., Scientific, Technical Services	55,100	56,000	53,800	-900	-1.6%	0.0%	1,300	2.4%	5.2%
60-541300	Architectural, Engineering, Services	10,300	10,300	9,900	0	0.0%	0.0%	400	4.0%	6.0%
60-541700	Scientific Research & Development	8,900	9,100	9,100	-200	-2.2%	-0.4%	-200	-2.2%	5.4%
60-550000	Mgmnt. Of Companies & Enterprises	9,000	9,000	8,800	0	0.0%	-0.5%	200	2.3%	4.4%
60-560000	Admin., Support, Waste Mgmt Serv.	48,800	50,100	49,900	-1,300	-2.6%	0.1%	-1,100	-2.2%	-0.6%
60-561000	Administrative, Support Services	43,200	44,700	45,000	-1,500	-3.4%	0.1%	-1,800	-4.0%	-1.1%
60-561300	Employment Services	13,800	14,000	13,500	-200	-1.4%	1.8%	300	2.2%	-1.8%
60-561400	Business Support Services	7,400	7,600	7,200	-200	-2.6%	-0.8%	200	2.8%	-9.7%
60-561420	Telephone Call Centers	5,700	5,900	5,400	-200	-3.4%	-0.8%	300	5.6%	-10.5%
60-561700	Services To Buildings And Dwellings	17,100	17,500	16,100	-400	-2.3%	-1.3%	1,000	6.2%	3.8%
65-000000	Education And Health Services	135,800	137,000	134,800	-1,200	-0.9%	-1.8%	1,000	0.7%	4.3%
65-610000	Educational Services	15,100	15,900	13,400	-800	-5.0%	-11.3%	1,700	12.7%	6.5%
65-620000	Health Care And Social Services	120,700	121,100	121,400	-400	-0.3%	-0.7%	-700	-0.6%	4.1%
65-621000	Ambulatory Health Care	51,500	51,700	53,600	-200	-0.4%	-1.7%	-2,100	-3.9%	2.3%
65-622000	Hospitals	33,400	33,500	32,400	-100	-0.3%	0.4%	1,000	3.1%	6.5%
65-622100	General Medical And Surgical	30,600	30,700	29,700	-100	-0.3%	0.6%	900	3.0%	7.7%
65-623000	Nursing & Residential Care Facilities	16,800	16,800	16,400	0	0.0%	-0.4%	400	2.4%	1.5%
65-624000	Social Assistance	19,000	19,100	19,000	-100	-0.5%	-0.9%	0	0.0%	3.1%
70-000000	Leisure And Hospitality	106,500	107,200	100,600	-700	-0.7%	0.2%	5,900	5.9%	2.6%
70-710000	Arts, Entertainment, Recreation	19,100	20,000	18,200	-900	-4.5%	-1.8%	900	4.9%	3.8%
70-713000	Amusement Gambling, Recreation	16,600	17,300	15,400	-700	-4.0%	-2.1%	1,200	7.8%	3.6%
70-713900	Other Amusement & Recreation Ind.	13,100	13,500	12,800	-400	-3.0%	-1.6%	300	2.3%	3.5%
70-720000	Accommodation And Food Services	87,400	87,200	82,400	200	0.2%	0.6%	5,000	6.1%	2.3%
70-721000	Accommodations	13,200	13,300	12,900	-100	-0.8%	0.6%	300	2.3%	1.9%
70-722000	Food Service And Drinking Places	74,200	73,900	69,500	300	0.4%	0.6%	4,700	6.8%	2.4%
70-722511	Full Service Restaurants	28,800	28,500	27,100	300	1.1%	-0.1%	1,700	6.3%	0.4%
70-722590	Limited Service Restaurants	38,800	38,900	36,500	-100	-0.3%	0.1%	2,300	6.3%	3.9%
80-000000	Other Services	31,800	32,000	29,700	-200	-0.6%	-0.1%	2,100	7.1%	1.8%
80-811000	Repair And Maintenance	9,900	9,900	9,500	0	0.0%	0.0%	400	4.2%	2.8%
80-811100	Automotive Repair & Maintenance	7,300	7,300	7,000	0	0.0%	-0.3%	300	4.3%	2.9%
90-000000	Total Government	122,400	121,800	124,300	600	0.5%	0.7%	-1,900	-1.5%	0.8%
90-910000	Federal Government	14,200	14,500	15,200	-300	-2.1%	-0.9%	-1,000	-6.6%	1.6%
90-940000	State And Local Government	108,200	107,300	109,100	900	0.8%	1.0%	-900	-0.8%	0.7%
90-920000	State Government	30,100	29,100	32,100	1,000	3.4%	3.5%	-2,000	-6.2%	2.7%
90-921611	State Education	13,900	12,900	16,400	1,000	7.8%	6.4%	-2,500	-15.2%	6.2%
90-929999	State Administration	16,200	16,200	15,700	0	0.0%	0.8%	500	3.2%	-0.1%
90-930000	Local Government	78,100	78,200	77,000	-100	-0.1%	0.1%	1,100	1.4%	-0.1%
90-931611	Local Education	40,300	39,900	39,700	400	1.0%	0.7%	600	1.5%	1.3%
90-939999	Local Administration	37,800	38,300	37,300	-500	-1.3%	-0.6%	500	1.3%	-1.3%

* = Average is based on the previous five years of experience.

BLS CES

PRELIMINARY AND FINAL ESTIMATE COMPARISON

July - 2025					
NAICS	Category	Final	Preliminary	Change	%
00-000000	TOTAL NONFARM	890,900	893,400	(2,500)	-0.3%
05-000000	TOTAL PRIVATE	769,100	771,200	(2,100)	-0.3%
06-000000	GOODS PRODUCING	161,700	162,000	(300)	-0.2%
07-000000	SERVICE PROVIDING, (INC. GOV)	729,200	731,400	(2,200)	-0.3%
08-000000	PRIVATE SERVICE PROVIDING	607,400	609,200	(1,800)	-0.3%
10-000000	NATURAL RESOURCES	4,600	4,600	0	0.0%
20-000000	CONSTRUCTION	79,900	80,100	(200)	-0.2%
20-236000	CONSTRUCTION OF BUILDING	18,600	18,600	0	0.0%
20-236100	RESIDENTIAL BUILDING CONST.	10,700	10,700	0	0.0%
20-237000	HEAVY AND CIVIL CONST.	8,900	9,000	(100)	-1.1%
20-238000	SPECIALTY TRADE CONTRACTORS	52,400	52,500	(100)	-0.2%
20-238100	FOUNDTN, STRCTRE, BLDING CONTRACT	13,000	13,000	0	0.0%
20-238200	BUILDING EQUIPMENT CONTRACTORS	20,300	20,400	(100)	-0.5%
20-238300	BUILDING FINISHING CONTRACTORS	9,400	9,400	0	0.0%
20-238900	OTHER SPECIALTY TRADE CONTRACTORS	9,700	9,700	0	0.0%
30-000000	MANUFACTURING	77,200	77,300	(100)	-0.1%
31-000000	DURABLE GOODS	44,400	44,400	0	0.0%
31-334000	COMPUTER AND ELECT. MANUFACT.	11,000	11,000	0	0.0%
31-334100	COMPUTER AND PERIPH. MANUFACT.	1,300	1,300	0	0.0%
31-334400	SEMICONDUCTOR & OTHR ELECT. MANUF.	8,100	8,100	0	0.0%
32-000000	NONDURABLE GOODS	32,800	32,900	(100)	-0.3%
32-311000	FOOD MANUFACTURING	21,700	21,700	0	0.0%
32-311400	FRUIT & VEGETABLE MANUFACTURING	7,700	7,700	0	0.0%
40-000000	TRADE, TRANSPORTATION, & UTILITIES	163,700	163,900	(200)	-0.1%
41-000000	WHOLESALE TRADE	34,600	34,800	(200)	-0.6%
41-423000	MERCHANT WHLSALERS DUR. GDS	18,900	19,000	(100)	-0.5%
41-424000	MERCHANT WHLSALERS NONDUR. GDS	14,100	14,100	0	0.0%
42-000000	RETAIL TRADE	94,800	94,800	0	0.0%
42-441000	MOTOR VEHICLE AND PARTS DEALERS	15,300	15,300	0	0.0%
42-444000	BLDING MATERIALS & GARDEN SUPPLIES	10,600	10,600	0	0.0%
42-445000	FOOD AND BEVERAGE STORES	17,600	17,600	0	0.0%
42-445100	GROCERY STORES	15,500	15,500	0	0.0%
42-452000	GENERAL MERCHANDISE STORES	18,500	18,400	100	0.5%
42-452200	DEPARTMENT STORES	3,600	3,600	0	0.0%
42-452300	OTHER GENERAL MERCHANDISE STORES	14,900	14,800	100	0.7%
43-000000	TRANSPORT., WRHOUSE, AND UTILITIES	34,300	34,300	0	0.0%
43-220000	UTILITIES	3,500	3,500	0	0.0%
43-400089	TRANSPORTATION AND WAREHOUSING	30,800	30,800	0	0.0%
43-484000	TRUCK TRANSPORTATION	10,500	10,500	0	0.0%
43-484100	GENERAL FREIGHT TRUCKING	7,000	7,000	0	0.0%
50-000000	INFORMATION	9,100	9,300	(200)	-2.2%
50-517000	TELECOMMUNICATIONS	2,300	2,300	0	0.0%
55-000000	FINANCIAL ACTIVITIES	43,300	43,400	(100)	-0.2%
55-520000	FINANCE AND INSURANCE	31,000	31,100	(100)	-0.3%
55-522000	CREDIT INTERMEDIATION ACTIVITIES	12,900	12,900	0	0.0%
55-524000	INSURANCE CARRIERS ACTIVITIES	14,500	14,600	(100)	-0.7%
55-530000	REAL ESTATE AND RENTAL AND LEASING	12,300	12,300	0	0.0%
60-000000	PROFESSIONAL AND BUSINESS SERVICES	115,100	116,000	(900)	-0.8%
60-540000	PROF., SCIENTIFIC, TECHNICAL SERVICES	56,000	56,000	0	0.0%
60-541300	ARCHITECTURAL, ENGINEERING, SERVICES	10,300	10,300	0	0.0%
60-541700	SCIENTIFIC RESEARCH & DEVELOPMENT	9,100	9,100	0	0.0%
60-550000	MGMENT. OF COMPANIES & ENTERPRISES	9,000	9,000	0	0.0%
60-560000	ADMIN., SUPPORT, WASTE MGMENT SERV.	50,100	51,000	(900)	-1.8%
60-561000	ADMINISTRATIVE, SUPPORT SERVICES	44,700	45,600	(900)	-2.0%
60-561300	EMPLOYMENT SERVICES	14,000	14,100	(100)	-0.7%
60-561400	BUSINESS SUPPORT SERVICES	7,600	7,600	0	0.0%
60-561420	TELEPHONE CALL CENTERS	5,900	5,900	0	0.0%
60-561700	SERVICES TO BUILDINGS AND DWELLINGS	17,500	17,700	(200)	-1.1%
65-000000	EDUCATION AND HEALTH SERVICES	137,000	137,700	(700)	-0.5%
65-610000	EDUCATIONAL SERVICES	15,900	15,900	0	0.0%
65-620000	HEALTH CARE AND SOCIAL SERVICES	121,100	121,800	(700)	-0.6%
65-621000	AMBULATORY HEALTH CARE	51,700	52,500	(800)	-1.5%
65-622000	HOSPITALS	33,500	33,400	100	0.3%
65-622100	GENERAL MEDICAL AND SURGICAL	30,700	30,700	0	0.0%
65-623000	NURSING & RESIDENTIAL CARE FACILITIES	16,800	16,900	(100)	-0.6%
65-624000	SOCIAL ASSISTANCE	19,100	19,000	100	0.5%
70-000000	LEISURE AND HOSPITALITY	107,200	106,600	600	0.6%
70-710000	ARTS, ENTERTAINMENT, RECREATION	20,000	20,100	(100)	-0.5%
70-713000	AMUSEMENT GAMBLING, RECREATION	17,300	17,300	0	0.0%
70-713900	OTHER AMUSEMENT & RECREATION IND.	13,500	13,600	(100)	-0.7%
70-720000	ACCOMMODATION AND FOOD SERVICES	87,200	86,500	700	0.8%
70-721000	ACCOMMODATIONS	13,300	13,200	100	0.8%
70-722000	FOOD SERVICE AND DRINKING PLACES	73,900	73,300	600	0.8%
70-722511	FULL SERVICE RESTAURANTS	28,500	27,900	600	2.2%
70-722590	LIMITED SERVICE RESTAURANTS	38,900	38,600	300	0.8%
80-000000	OTHER SERVICES	32,000	32,300	(300)	-0.9%
80-811000	REPAIR AND MAINTENANCE	9,900	10,100	(200)	-2.0%
80-811100	AUTOMOTIVE REPAIR & MAINTENANCE	7,300	7,400	(100)	-1.4%
90-000000	TOTAL GOVERNMENT	121,800	122,200	(400)	-0.3%
90-910000	FEDERAL GOVERNMENT	14,500	14,500	0	0.0%
90-940000	STATE AND LOCAL GOVERNMENT	107,300	107,700	(400)	-0.4%
90-920000	STATE GOVERNMENT	29,100	29,100	0	0.0%
90-921611	STATE EDUCATION	12,900	12,900	0	0.0%
90-929999	STATE ADMINISTRATION	16,200	16,200	0	0.0%
90-930000	LOCAL GOVERNMENT	78,200	78,600	(400)	-0.5%
90-931611	LOCAL EDUCATION	39,900	40,300	(400)	-1.0%
90-939999	LOCAL ADMINISTRATION	38,300	38,300	0	0.0%