

**Unemployment Insurance
Claimant Characteristics
November 2025**

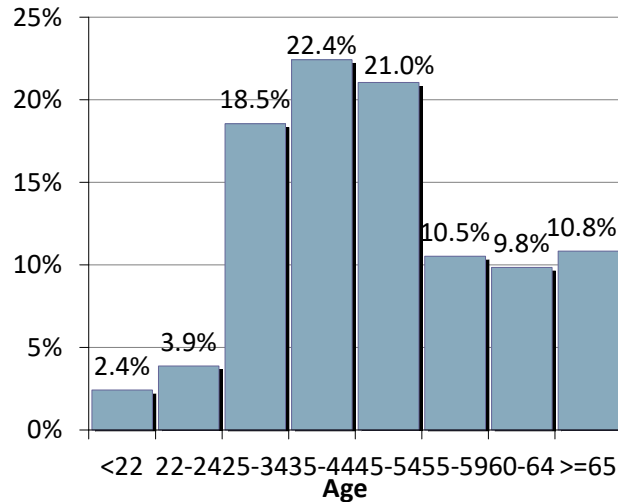


Gender of the Insured Unemployed

Male	3,385	59.5%
Female	2,298	40.4%
N/A	5	0.09%
Total	5,688	100%

Age of the Insured Unemployed

<22	137	2.4%
22-24	220	3.9%
25-34	1,055	18.5%
35-44	1,276	22.4%
45-54	1,197	21.0%
55-59	599	10.5%
60-64	560	9.8%
>=65	616	10.8%
INA	28	INA
Total	5,688	100%



Race of the Insured Unemployed

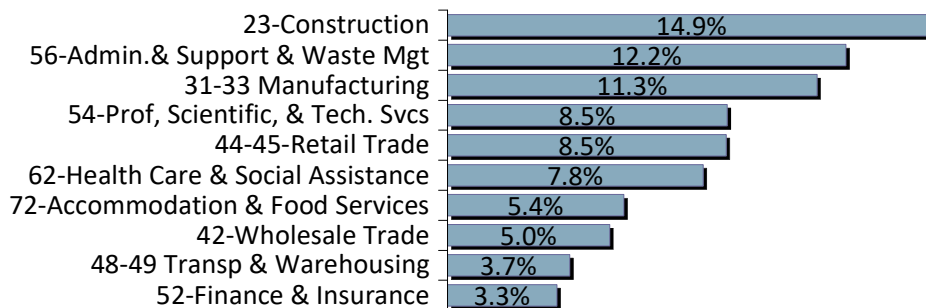
Native Am.	185	3.0%
Asian	104	1.7%
African Am.	97	1.6%
Pacific Islander	44	0.7%
White	4,874	79.6%
INA	818	13.4%
* Total	6,122	100%

Ethnicity of the Insured Unemployed

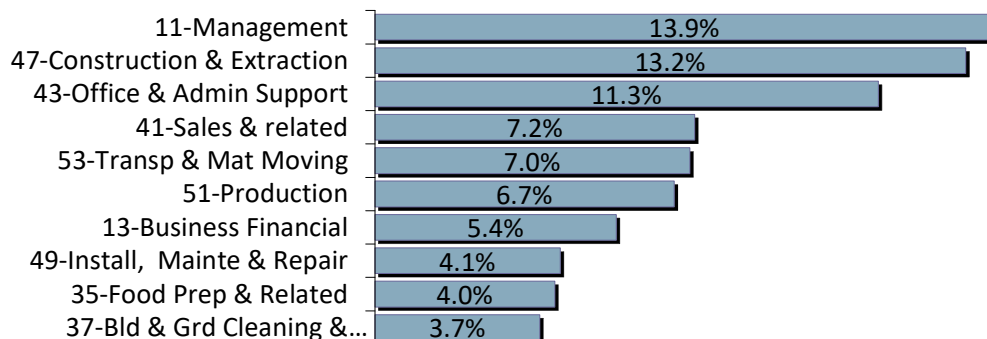
Hispanic/Latino	689	12.1%
Non-Hispanic/Latino	4,417	77.7%
INA	582	10.2%
Total	5,688	100.0%

*** Some Claimants choose more than one race category**

What industries did the claimants work in?



What occupations did the claimants hold?



**Unemployment Insurance
Claimant Characteristics
November 2025**

Demographics	November 2025		October 2025		Monthly Difference	November 2024		Yearly Difference
Gender:								
Male	3,385	59.5%	2,513	54.7%	872	3,109	59.8%	276
Female	2,298	40.4%	2,071	45.1%	227	2,080	40.0%	218
INA	5	0.1%	6	0.1%	-1	6	0.1%	-1
Total	5,688		4,590		1,098	5,195		493
Race: NOTE: Claimants may choose more than one Race category								
Native American	185	N/A	144	N/A	41	148	N/A	37
Asian	104	N/A	106	N/A	-2	106	N/A	-2
African American	97	N/A	84	N/A	13	65	N/A	32
Pacific Islander	44	N/A	35	N/A	9	48	N/A	-4
White	4,874	N/A	3,925	N/A	949	4,466	N/A	408
INA	818	N/A	640	N/A	178	861	N/A	-43
Ethnicity:								
Hispanic/Latino	689	12.1%	572	12.5%	117	742	14.3%	-53
Non-Hispanic/Latino	4,417	77.7%	3,563	77.6%	854	3,898	75.0%	519
INA	582	10.2%	455	9.9%	127	555	10.7%	27
Age:								
<22	137	2.4%	89	1.9%	48	153	2.9%	-16
22-24	220	3.9%	160	3.5%	60	242	4.7%	-22
25-34	1,055	18.5%	838	18.3%	217	1,039	20.0%	16
35-44	1,276	22.4%	1,072	23.4%	204	1,179	22.7%	97
45-54	1,197	21.0%	938	20.4%	259	1,070	20.6%	127
55-59	599	10.5%	521	11.4%	78	512	9.9%	87
60-64	560	9.8%	472	10.3%	88	455	8.8%	105
>=65	616	10.8%	480	10.5%	136	529	10.2%	87
Total	5,660		4,570		1,090	5,179		481

**Unemployment Insurance
Claimant Characteristics ***
November 2025

Industry	November 2025		October 2025		Monthly Difference	November 2024		Yearly Difference
23-Construction	848	15%	558	12%	290	763	15%	85
56-Admin. & Support & Waste Mgt	692	12%	459	10%	233	586	11%	106
31-33 Manufacturing	642	11%	631	14%	11	550	11%	92
54-Prof, Scientific, & Tech. Svcs	486	9%	439	10%	47	433	8%	53
44-45-Retail Trade	484	9%	385	8%	99	452	9%	32
62-Health Care & Social Assistance	444	8%	408	9%	36	360	7%	84
72-Accommodation & Food Services	306	5%	246	5%	60	320	6%	-14
42-Wholesale Trade	282	5%	243	5%	39	208	4%	74
48-49 Transp & Warehousing	212	4%	197	4%	15	231	4%	-19
52-Finance & Insurance	190	3%	192	4%	-2	147	3%	43
71-Arts, Entertainment & Recreation	138	2%	79	2%	59	114	2%	24
11-Agriculture & Forestry	137	2%	48	1%	89	181	3%	-44
61-Educational Services	136	2%	122	3%	14	120	2%	16
92-Public Administration	123	2%	88	2%	35	133	3%	-10
81-Other Services (ex Public Admin)	104	2%	88	2%	16	117	2%	-13
51-Information	99	2%	91	2%	8	91	2%	8
53-Real Estate & Rental & Leasing	79	1%	73	2%	6	84	2%	-5
21-Mining	22	0%	15	0%	7	29	1%	-7
55-Mgt of Companies & Enterprises	15	0%	12	0%	3	17	0%	-2
22-Utilities	11	0%	7	0%	4	20	0%	-9
INA*	238	4%	209	5%	29	239	5%	-1
Total	5,688		4,590		1,098	5,195		493

Occupations	November 2025		October 2025		Monthly Difference	November 2024		Yearly Difference
11-Management	788	14%	706	15%	82	684	13%	104
47-Construction & Extraction	752	13%	487	11%	265	675	13%	77
43-Office & Admin Support	641	11%	608	13%	33	525	10%	116
41-Sales & related	407	7%	354	8%	53	348	7%	59
53-Transp & Mat Moving	401	7%	259	6%	142	412	8%	-11
51-Production	381	7%	360	8%	21	400	8%	-19
13-Business Financial	307	5%	300	7%	7	230	4%	77
49-Install, Mainte & Repair	236	4%	173	4%	63	215	4%	21
35-Food Prep & Related	229	4%	189	4%	40	260	5%	-31
37-Bld & Grd Cleaning & Maint	210	4%	93	2%	117	244	5%	-34
45-Farming, Fishing & Forestry	194	3%	68	1%	126	214	4%	-20
15-Computer Math	182	3%	182	4%	0	206	4%	-24
31-Healthcare Support	164	3%	156	3%	8	114	2%	50
29-Healthcare Pract & Tech	129	2%	110	2%	19	76	1%	53
17-Architect & Engineer	108	2%	84	2%	24	82	2%	26
27-Art Design, Entert Spt & Media	93	2%	73	2%	20	95	2%	-2
39-Personal Care & Svcs	82	1%	75	2%	7	73	1%	9
33-Protective Svcs	80	1%	35	1%	45	44	1%	36
25-Ed Training & Library	62	1%	53	1%	9	55	1%	7
21-Community & Social Svcs	51	1%	46	1%	5	47	1%	4
19-Life Phys Social	41	1%	42	1%	-1	34	1%	7
23-Legal	26	0%	27	1%	-1	16	0%	10
55-Military Specific	5	0%	6	0%	-1	3	0%	2
INA*	119	2%	104	2%	15	143	3%	-24
Total	5,688		4,590		1,098	5,195		493

* This data reflects UI claims characteristics for the pay period including the 12th of the month.