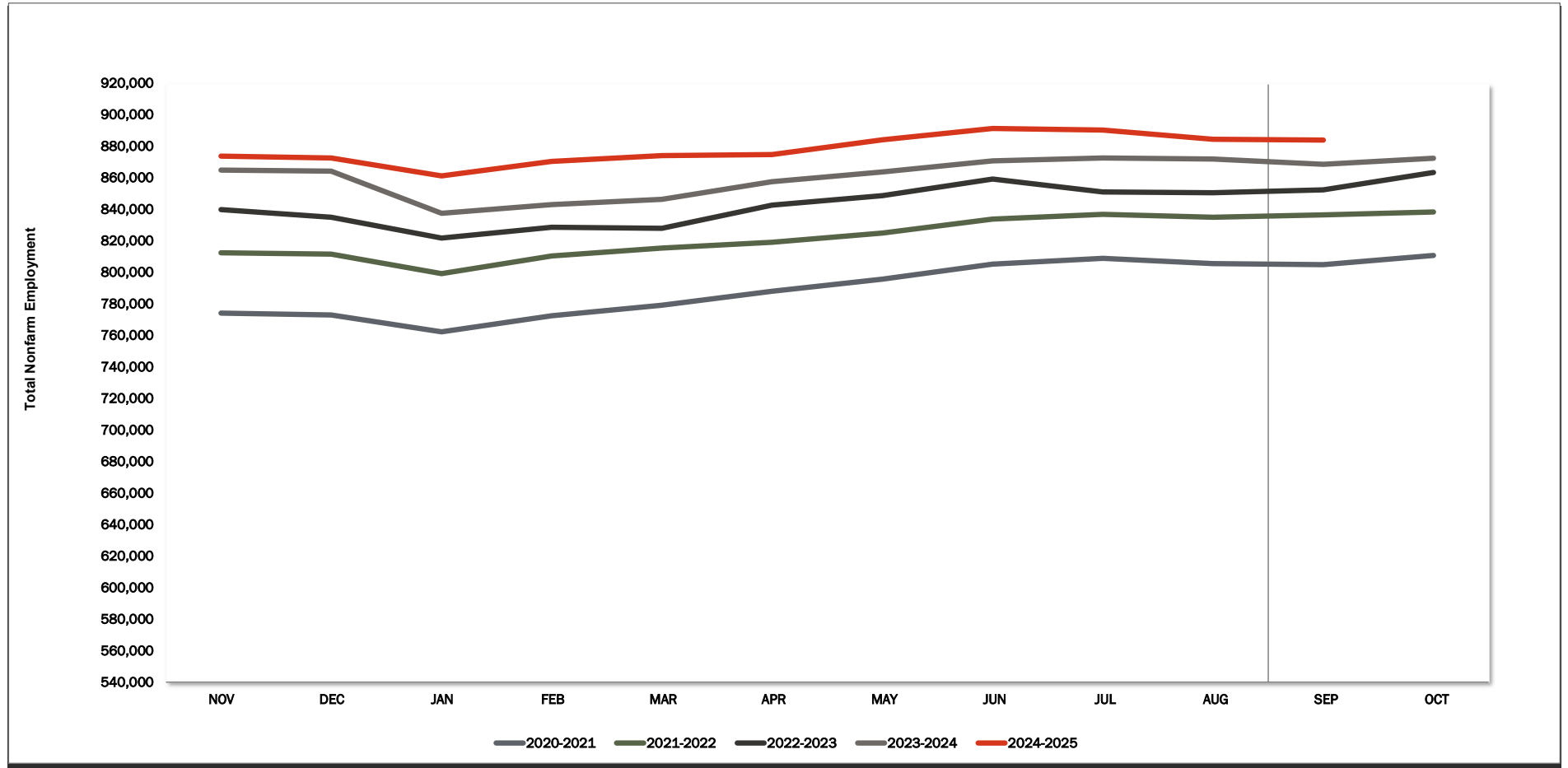
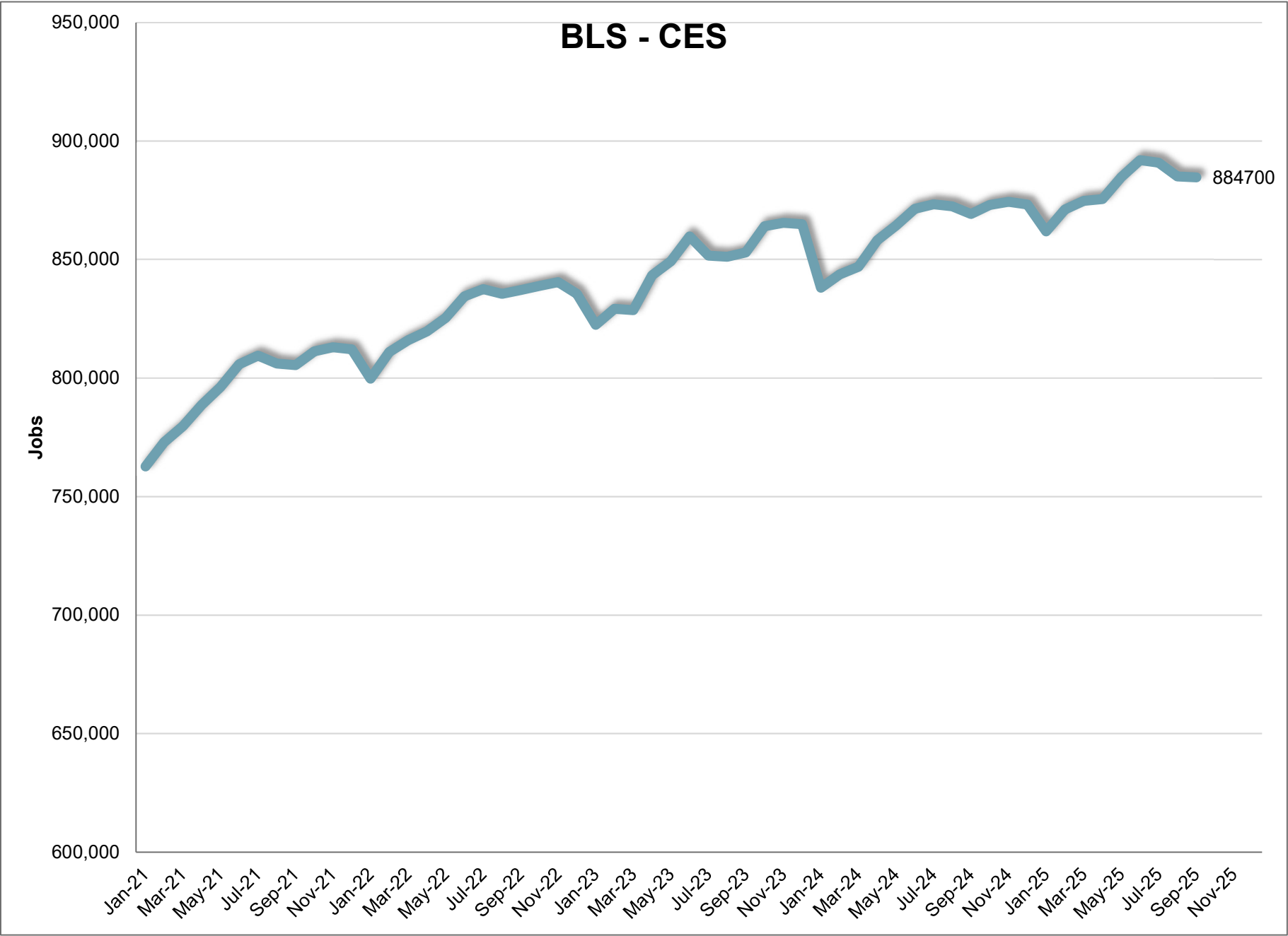


# BLS CES



	JAN	FEB	MAR	APR	MAY	JUN	JUL	AUG	SEP	OCT	NOV	DEC	12 Mth Avg
2019	733,800	741,400	745,400	752,900	762,600	769,300	767,200	767,000	767,600	772,200	772,300	770,100	760,200
2020	757,400	763,800	766,400	692,500	723,300	749,700	759,000	762,200	767,300	772,000	774,600	773,500	755,100
2021	762,700	772,900	779,700	788,600	796,200	805,800	809,500	806,100	805,400	811,300	813,000	812,100	796,900
2022	799,700	811,000	815,900	819,700	825,400	834,500	837,500	835,500	837,100	838,900	840,500	835,500	827,600
2023	822,400	829,200	828,600	843,300	849,300	859,800	851,600	851,200	853,000	864,100	865,500	864,900	848,600
2024	838,100	843,700	847,000	858,100	864,300	871,400	873,300	872,500	869,200	873,000	874,400	873,200	863,200
2025	861,900	871,100	874,700	875,500	884,800	892,000	890,900	885,100	884,700				
Mnth-Mnth % Change													
2024	-3.1%	0.7%	0.4%	1.3%	0.7%	0.8%	0.2%	-0.1%	-0.4%	0.4%	0.2%	-0.1%	
2025	-1.3%	1.1%	0.4%	0.1%	1.1%	0.8%	-0.1%	-0.7%	0.0%				
5-MTM Avg	-1.8%	1.0%	0.4%	-1.0%	1.5%	1.6%	0.3%	-0.1%	0.1%				
Year-Year % Change													
2024	1.9%	1.7%	2.2%	1.8%	1.8%	1.3%	2.5%	2.5%	1.9%	1.0%	1.0%	1.0%	Avg 1.7%
2025	2.8%	3.2%	3.3%	2.0%	2.4%	2.4%	2.0%	1.4%	1.8%				
5-YTY Avg	2.7%	2.6%	2.6%	2.9%	2.7%	2.6%	2.7%	2.6%	2.5%				



## September 2025

### Current Employment Statistics

### Confidence Interval Bounds of Selected Month's Estimate

Industry Title	Current Month	Estimated Change			Confidence Interval Bounds of Selected Month's Estimate					
		1 Month	3 Month	12 Month	1 Month		3 Month		12 Month	
		+	-		+	-	+	-	+	-
Total Nonfarm	884,700	-400	-7,300	15,500	4,005	-4,805	48	-14,648	29,334	1,666
Total Private	756,300	-6,400	-8,000	15,800	-2,051	-10,749	-749	-15,251	29,439	2,161
Goods Producing	158,800	-1,600	-2,700	4,700	377	-3,577	587	-5,987	10,915	-1,515
Private Service Providing	597,500	-4,800	-5,300	11,100	-928	-8,672	1,163	-11,763	23,242	-1,042
Mining and Logging	4,500	-100	0	0	79	-279	332	-332	716	-716
Mining, Logging, and Construction	83,000	-1,300	-1,300	4,700	251	-2,851	1,225	-3,825	9,291	109
Construction	78,500	-1,200	-1,300	4,700	341	-2,741	1,204	-3,804	9,235	165
Manufacturing	75,800	-300	-1,400	0	926	-1,526	704	-3,504	4,188	-4,188
Durable Goods	43,200	-500	-1,300	400	503	-1,503	404	-3,004	3,718	-2,918
Non-Durable Goods	32,600	200	-100	-400	904	-504	1,134	-1,334	2,156	-2,956
Trade, Transportation, and Utilities	163,100	-300	-100	-1,700	1,350	-1,950	2,708	-2,908	3,518	-6,918
Wholesale Trade	34,500	100	-500	-2,000	804	-604	665	-1,665	328	-4,328
Retail Trade	94,800	0	500	600	1,145	-1,145	2,388	-1,388	4,008	-2,808
Transportation and Utilities	33,800	-400	-100	-300	557	-1,357	1,621	-1,821	2,891	-3,491
Information	9,100	-100	-200	100	166	-366	274	-674	1,146	-946
Financial Activities	42,400	-200	-700	1,000	466	-866	448	-1,848	3,456	-1,456
Professional and Business Services	111,700	-1,600	-1,900	300	216	-3,416	1,124	-4,924	6,171	-5,571
Professional, Scientific, and Technical Services	54,800	-400	-1,000	1,500	325	-1,125	230	-2,230	4,063	-1,063
Management of Companies and Enterprises	8,900	-100	-100	100	45	-245	165	-365	677	-477
Administrative and Support and Waste Managem	48,000	-1,100	-800	-1,300	558	-2,758	1,949	-3,549	3,951	-6,551
Education and health services	137,000	1,400	-500	3,200	3,052	-252	2,170	-3,170	8,179	-1,779
Educational Services	16,400	1,200	-100	400	1,840	560	1,052	-1,252	2,124	-1,324
Health Care and Social Assistance	120,600	200	-400	2,800	1,723	-1,323	2,008	-2,808	7,472	-1,872
Leisure and Hospitality	103,300	-3,200	-900	6,700	-1,025	-5,375	2,793	-4,593	13,474	-74
Arts, Entertainment, and Recreation	17,400	-1,800	-1,600	500	-663	-2,937	458	-3,658	3,918	-2,918
Accommodation and Food Services	85,900	-1,400	700	6,200	454	-3,254	3,766	-2,366	12,048	352
Other Services	30,900	-800	-1,000	1,500	203	-1,803	564	-2,564	4,311	-1,311

For information on Bureau of Labor Statistic confidence interval calculations, please visit:

[www.bls.gov/sae/790stderr.htm](http://www.bls.gov/sae/790stderr.htm)

# BLS CES

September										2025
NAICS	Category	SEP	AUG	SEP-2024	Change	%	5 Yr Avg	Change	%	5 Yr Avg
00-000000	Total Nonfarm	884,700	885,100	869,200	-400	0.0%	0.1%	15,500	1.8%	2.5%
05-000000	Total Private	756,300	762,700	740,500	-6,400	-0.8%	-0.8%	15,800	2.1%	3.0%
06-000000	Goods Producing	158,800	160,400	154,100	-1,600	-1.0%	-0.6%	4,700	3.0%	3.8%
07-000000	Service Providing, (Inc. Gov)	725,900	724,700	715,100	1,200	0.2%	0.3%	10,800	1.5%	2.3%
08-000000	Private Service Providing	597,500	602,300	586,400	-4,800	-0.8%	-0.8%	11,100	1.9%	2.8%
10-000000	Natural Resources	4,500	4,600	4,500	-100	-2.2%	-0.4%	0	0.0%	2.5%
20-000000	Construction	78,500	79,700	73,800	-1,200	-1.5%	-1.4%	4,700	6.4%	6.0%
20-236000	Construction of Buildings	18,200	18,500	17,000	-300	-1.6%	-2.1%	1,200	7.1%	5.1%
20-236100	Residential Building Const.	10,400	10,700	9,900	-300	-2.8%	-2.3%	500	5.1%	5.6%
20-237000	Heavy And Civil Const.	8,800	8,900	8,300	-100	-1.1%	-0.7%	500	6.0%	4.4%
20-238000	Specialty Trade Contractors	51,500	52,300	48,500	-800	-1.5%	-1.3%	3,000	6.2%	6.6%
20-238100	Foundtn, Strctre, Blding Contract	12,800	13,000	12,000	-200	-1.5%	-1.5%	800	6.7%	5.7%
20-238200	Building Equipment Contractors	20,000	20,200	18,700	-200	-1.0%	-0.5%	1,300	7.0%	7.9%
20-238300	Building Finishing Contractors	9,200	9,400	8,800	-200	-2.1%	-1.9%	400	4.5%	4.1%
20-238900	Other Specialty Trade Contractors	9,500	9,700	9,000	-200	-2.1%	-2.1%	500	5.6%	7.8%
30-000000	Manufacturing	75,800	76,100	75,800	-300	-0.4%	0.1%	0	0.0%	1.9%
31-000000	Durable Goods	43,200	43,700	42,800	-500	-1.1%	-0.6%	400	0.9%	1.7%
31-334000	Computer And Elect. Manufact.	10,900	10,900	10,400	0	0.0%	-0.9%	500	4.8%	-2.6%
31-334100	Computer And Periph. Manufact.	1,300	1,300	1,200	0	0.0%	-1.5%	100	8.3%	-10.9%
31-334400	Semiconductor & Othr Elect. Manuf.	8,000	8,000	7,700	0	0.0%	-1.0%	300	3.9%	-2.3%
32-000000	Nondurable Goods	32,600	32,400	33,000	200	0.6%	0.9%	-400	-1.2%	2.3%
32-311000	Food Manufacturing	21,500	21,400	21,800	100	0.5%	1.6%	-300	-1.4%	2.5%
32-311400	Fruit & Vegetable Manufacturing	7,600	7,600	7,800	0	0.0%	2.3%	-200	-2.6%	2.5%
40-000000	Trade, Transportation, & Utilities	163,100	163,400	164,800	-300	-0.2%	-0.1%	-1,700	-1.0%	2.6%
41-000000	Wholesale Trade	34,500	34,400	36,500	100	0.3%	-0.2%	-2,000	-5.5%	3.3%
41-423000	Merchant Whlsalers Dur. Gds	18,800	18,800	19,900	0	0.0%	-0.2%	-1,100	-5.5%	4.0%
41-424000	Merchant Whlsalers Nondur. Gds	14,000	14,000	14,900	0	0.0%	-0.4%	-900	-6.0%	2.8%
42-000000	Retail Trade	94,800	94,800	94,200	0	0.0%	-0.5%	600	0.6%	1.5%
42-441000	Motor Vehicle And Parts Dealers	15,300	15,400	15,300	-100	-0.6%	-0.1%	0	0.0%	2.0%
42-444000	Blding Materials & Garden Supplies	10,300	10,400	10,300	-100	-1.0%	-2.8%	0	0.0%	2.6%
42-445000	Food And Beverage Stores	17,600	17,600	17,400	0	0.0%	-0.5%	200	1.1%	2.8%
42-445100	Grocery Stores	15,500	15,600	15,400	-100	-0.6%	-0.3%	100	0.6%	2.9%
42-452000	General Merchandise Stores	18,800	18,700	18,700	100	0.5%	0.4%	100	0.5%	3.1%
42-452200	Department Stores	3,700	3,700	3,900	0	0.0%	0.6%	-200	-5.1%	2.0%
42-452300	Other General Merchandise Stores	15,100	15,000	14,800	100	0.7%	0.4%	300	2.0%	3.5%
43-000000	Transport., Wrhse, And Utilities	33,800	34,200	34,100	-400	-1.2%	1.3%	-300	-0.9%	5.3%
43-220000	Utilities	3,500	3,500	3,500	0	0.0%	0.0%	0	0.0%	3.2%
43-400089	Transportation And Warehousing	30,300	30,700	30,600	-400	-1.3%	1.4%	-300	-1.0%	5.6%
43-484000	Truck Transportation	10,400	10,400	10,700	0	0.0%	1.7%	-300	-2.8%	-0.2%
43-484100	General Freight Trucking	7,000	7,000	7,000	0	0.0%	0.3%	0	0.0%	-0.3%
50-000000	Information	9,100	9,200	9,000	-100	-1.1%	-1.3%	100	1.1%	2.7%
50-517000	Telecommunications	2,300	2,300	2,300	0	0.0%	-1.0%	0	0.0%	2.9%
55-000000	Financial Activities	42,400	42,600	41,400	-200	-0.5%	-0.9%	1,000	2.4%	2.3%
55-520000	Finance And Insurance	30,400	30,600	29,700	-200	-0.7%	-0.5%	700	2.4%	1.6%
55-522000	Credit Intermediation Activities	12,700	12,700	12,300	0	0.0%	-0.3%	400	3.3%	0.5%
55-524000	Insurance Carriers Activities	14,300	14,300	14,000	0	0.0%	-0.1%	300	2.1%	2.2%
55-530000	Real Estate And Rental And Leasing	12,000	12,000	11,700	0	0.0%	-1.9%	300	2.6%	4.3%
60-000000	Professional And Business Services	111,700	113,300	111,400	-1,600	-1.4%	-1.2%	300	0.3%	2.4%
60-540000	Prof., Scientific, Technical Services	54,800	55,200	53,300	-400	-0.7%	-0.7%	1,500	2.8%	5.2%
60-541300	Architectural, Engineering, Services	10,200	10,300	9,900	-100	-1.0%	-0.7%	300	3.0%	6.3%
60-541700	Scientific Research & Development	8,800	9,000	8,900	-200	-2.2%	-1.7%	-100	-1.1%	5.2%
60-550000	Mgmt. Of Companies & Enterprises	8,900	9,000	8,800	-100	-1.1%	-0.3%	100	1.1%	4.4%
60-560000	Admin., Support, Waste Mgmt Serv.	48,000	49,100	49,300	-1,100	-2.2%	-1.8%	-1,300	-2.6%	-0.5%
60-561000	Administrative, Support Services	42,700	43,600	44,400	-900	-2.1%	-1.9%	-1,700	-3.8%	-0.9%
60-561300	Employment Services	13,500	13,900	13,400	-400	-2.9%	-0.6%	100	0.7%	-1.9%
60-561400	Business Support Services	7,300	7,400	7,200	-100	-1.4%	-0.6%	100	1.4%	-9.5%
60-561420	Telephone Call Centers	5,700	5,800	5,400	-100	-1.7%	-0.6%	300	5.6%	-10.5%
60-561700	Services To Buildings And Dwellings	16,500	17,100	15,600	-600	-3.5%	-4.4%	900	5.8%	4.0%
65-000000	Education And Health Services	137,000	135,600	133,800	1,400	1.0%	0.8%	3,200	2.4%	4.1%
65-610000	Educational Services	16,400	15,200	16,000	1,200	7.9%	18.9%	400	2.5%	8.2%
65-620000	Health Care And Social Services	120,600	120,400	117,800	200	0.2%	-1.2%	2,800	2.4%	3.6%
65-621000	Ambulatory Health Care	51,400	51,300	50,700	100	0.2%	-2.7%	700	1.4%	2.2%
65-622000	Hospitals	33,500	33,300	32,400	200	0.6%	0.2%	1,100	3.4%	6.4%
65-622100	General Medical And Surgical	30,700	30,600	29,700	100	0.3%	0.2%	1,000	3.4%	7.8%
65-623000	Nursing & Residential Care Facilities	16,800	16,800	16,400	0	0.0%	-0.1%	400	2.4%	1.5%
65-624000	Social Assistance	18,900	19,000	18,300	-100	-0.5%	-1.6%	600	3.3%	2.5%
70-000000	Leisure And Hospitality	103,300	106,500	96,600	-3,200	-3.0%	-3.5%	6,700	6.9%	2.5%
70-710000	Arts, Entertainment, Recreation	17,400	19,200	16,900	-1,800	-9.4%	-8.9%	500	3.0%	4.8%
70-713000	Amusement Gambling, Recreation	14,900	16,700	14,200	-1,800	-10.8%	-10.8%	700	4.9%	5.1%
70-713900	Other Amusement & Recreation Ind.	12,000	13,200	11,600	-1,200	-9.1%	-9.3%	400	3.4%	3.8%
70-720000	Accommodation And Food Services	85,900	87,300	79,700	-1,400	-1.6%	-2.3%	6,200	7.8%	2.1%
70-721000	Accommodations	12,500	13,100	12,200	-600	-4.6%	-5.7%	300	2.5%	2.0%
70-722000	Food Service And Drinking Places	73,400	74,200	67,500	-800	-1.1%	-1.7%	5,900	8.7%	2.2%
70-722511	Full Service Restaurants	28,200	28,900	26,200	-700	-2.4%	-2.2%	2,000	7.6%	0.1%
70-722590	Limited Service Restaurants	38,800	38,800	35,400	0	0.0%	-1.8%	3,400	9.6%	3.7%
80-000000	Other Services	30,900	31,700	29,400	-800	-2.5%	-1.5%	1,500	5.1%	2.0%
80-811000	Repair And Maintenance	9,700	9,900	9,500	-200	-2.0%	-0.5%	200	2.1%	3.0%
80-811100	Automotive Repair & Maintenance	7,200	7,200	7,000	0	0.0%	0.0%	200	2.9%	3.2%
90-000000	Total Government	128,400	122,400	128,700	6,000	4.9%	5.4%	-300	-0.2%	0.2%
90-910000	Federal Government	14,200	14,300	15,000	-100	-0.7%	-2.3%	-800	-5.3%	1.7%
90-940000	State And Local Government	114,200	108,100	113,700	6,100	5.6%	6.5%	500	0.4%	0.0%
90-920000	State Government	31,400	30,100	32,200	1,300	4.3%	6.8%	-800	-2.5%	1.2%
90-921611	State Education	15,600	13,900	16,300	1,700	12.2%	16.0%	-700	-4.3%	2.1%
90-929999	State Administration	15,800	16,200	15,900	-400	-2.5%	-0.4%	-100	-0.6%	0.5%
90-930000	Local Government	82,800	78,000	81,500	4,800	6.2%	6.4%	1,300	1.6%	-0.4%
90-931611	Local Education	45,300	40,500	44,900	4,800	11.9%	14.2%	400	0.9%	0.5%
90-939999	Local Administration	37,500	37,500	36,600	0	0.0%	-1.2%	900	2.5%	-1.3%

# BLS CES

## PRELIMINARY AND FINAL ESTIMATE COMPARISON

August - 2025

NAICS	Category	Final	Preliminary	Change	%
00-000000	TOTAL NONFARM	885,100	884,800	300	0.0%
05-000000	TOTAL PRIVATE	762,700	762,400	300	0.0%
06-000000	GOODS PRODUCING	160,400	160,200	200	0.1%
07-000000	SERVICE PROVIDING, (INC. GOV)	724,700	724,600	100	0.0%
08-000000	PRIVATE SERVICE PROVIDING	602,300	602,200	100	0.0%
10-000000	NATURAL RESOURCES	4,600	4,600	0	0.0%
20-000000	CONSTRUCTION	79,700	79,400	300	0.4%
20-236000	CONSTRUCTION OF BUILDING	18,500	18,400	100	0.5%
20-236100	RESIDENTIAL BUILDING CONST.	10,700	10,600	100	0.9%
20-237000	HEAVY AND CIVIL CONST.	8,900	8,900	0	0.0%
20-238000	SPECIALTY TRADE CONTRACTORS	52,300	52,100	200	0.4%
20-238100	FOUNDTN, STRCTRE, BLDING CONTRACT	13,000	13,000	0	0.0%
20-238200	BUILDING EQUIPMENT CONTRACTORS	20,200	20,200	0	0.0%
20-238300	BUILDING FINISHING CONTRACTORS	9,400	9,300	100	1.1%
20-238900	OTHER SPECIALTY TRADE CONTRACTORS	9,700	9,600	100	1.0%
30-000000	MANUFACTURING	76,100	76,200	(100)	-0.1%
31-000000	DURABLE GOODS	43,700	43,700	0	0.0%
31-334000	COMPUTER AND ELECT. MANUFACT.	10,900	10,900	0	0.0%
31-334100	COMPUTER AND PERIPH. MANUFACT.	1,300	1,300	0	0.0%
31-334400	SEMICONDUCTOR & OTHR ELECT. MANUF.	8,000	8,000	0	0.0%
32-000000	NONDURABLE GOODS	32,400	32,500	(100)	-0.3%
32-311000	FOOD MANUFACTURING	21,400	21,400	0	0.0%
32-311400	FRUIT & VEGETABLE MANUFACTURING	7,600	7,600	0	0.0%
40-000000	TRADE, TRANSPORTATION, & UTILITIES	163,400	163,500	(100)	-0.1%
41-000000	WHOLESALE TRADE	34,400	34,400	0	0.0%
41-423000	MERCHANT WHLSALERS DUR. GDS	18,800	18,800	0	0.0%
41-424000	MERCHANT WHLSALERS NONDUR. GDS	14,000	14,000	0	0.0%
42-000000	RETAIL TRADE	94,800	94,900	(100)	-0.1%
42-441000	MOTOR VEHICLE AND PARTS DEALERS	15,400	15,400	0	0.0%
42-444000	BLDING MATERIALS & GARDEN SUPPLIES	10,400	10,400	0	0.0%
42-445000	FOOD AND BEVERAGE STORES	17,600	17,700	(100)	-0.6%
42-445100	GROCERY STORES	15,600	15,600	0	0.0%
42-452000	GENERAL MERCHANDISE STORES	18,700	18,700	0	0.0%
42-452200	DEPARTMENT STORES	3,700	3,700	0	0.0%
42-452300	OTHER GENERAL MERCHANDISE STORES	15,000	15,000	0	0.0%
43-000000	TRANSPORT., WRHOUSE, AND UTILITIES	34,200	34,200	0	0.0%
43-220000	UTILITIES	3,500	3,500	0	0.0%
43-400089	TRANSPORTATION AND WAREHOUSING	30,700	30,700	0	0.0%
43-484000	TRUCK TRANSPORTATION	10,400	10,400	0	0.0%
43-484100	GENERAL FREIGHT TRUCKING	7,000	7,000	0	0.0%
50-000000	INFORMATION	9,200	9,100	100	1.1%
50-517000	TELECOMMUNICATIONS	2,300	2,300	0	0.0%
55-000000	FINANCIAL ACTIVITIES	42,600	42,600	0	0.0%
55-520000	FINANCE AND INSURANCE	30,600	30,500	100	0.3%
55-522000	CREDIT INTERMEDIATION ACTIVITIES	12,700	12,700	0	0.0%
55-524000	INSURANCE CARRIERS ACTIVITIES	14,300	14,300	0	0.0%
55-530000	REAL ESTATE AND RENTAL AND LEASING	12,000	12,100	(100)	-0.8%
60-000000	PROFESSIONAL AND BUSINESS SERVICES	113,300	112,900	400	0.4%
60-540000	PROF., SCIENTIFIC, TECHNICAL SERVICES	55,200	55,100	100	0.2%
60-541300	ARCHITECTURAL, ENGINEERING, SERVICES	10,300	10,300	0	0.0%
60-541700	SCIENTIFIC RESEARCH & DEVELOPMENT	9,000	8,900	100	1.1%
60-550000	MGMENT. OF COMPANIES & ENTERPRISES	9,000	9,000	0	0.0%
60-560000	ADMIN., SUPPORT, WASTE MGMENT SERV.	49,100	48,800	300	0.6%
60-561000	ADMINISTRATIVE, SUPPORT SERVICES	43,600	43,200	400	0.9%
60-561300	EMPLOYMENT SERVICES	13,900	13,800	100	0.7%
60-561400	BUSINESS SUPPORT SERVICES	7,400	7,400	0	0.0%
60-561420	TELEPHONE CALL CENTERS	5,800	5,700	100	1.8%
60-561700	SERVICES TO BUILDINGS AND DWELLINGS	17,100	17,100	0	0.0%
65-000000	EDUCATION AND HEALTH SERVICES	135,600	135,800	(200)	-0.1%
65-610000	EDUCATIONAL SERVICES	15,200	15,100	100	0.7%
65-620000	HEALTH CARE AND SOCIAL SERVICES	120,400	120,700	(300)	-0.2%
65-621000	AMBULATORY HEALTH CARE	51,300	51,500	(200)	-0.4%
65-622000	HOSPITALS	33,300	33,400	(100)	-0.3%
65-622100	GENERAL MEDICAL AND SURGICAL	30,600	30,600	0	0.0%
65-623000	NURSING & RESIDENTIAL CARE FACILITIES	16,800	16,800	0	0.0%
65-624000	SOCIAL ASSISTANCE	19,000	19,000	0	0.0%
70-000000	LEISURE AND HOSPITALITY	106,500	106,500	0	0.0%
70-710000	ARTS, ENTERTAINMENT, RECREATION	19,200	19,100	100	0.5%
70-713000	AMUSEMENT GAMBLING, RECREATION	16,700	16,600	100	0.6%
70-713900	OTHER AMUSEMENT & RECREATION IND.	13,200	13,100	100	0.8%
70-720000	ACCOMMODATION AND FOOD SERVICES	87,300	87,400	(100)	-0.1%
70-721000	ACCOMMODATIONS	13,100	13,200	(100)	-0.8%
70-722000	FOOD SERVICE AND DRINKING PLACES	74,200	74,200	0	0.0%
70-722511	FULL SERVICE RESTAURANTS	28,900	28,800	100	0.3%
70-722590	LIMITED SERVICE RESTAURANTS	38,800	38,800	0	0.0%
80-000000	OTHER SERVICES	31,700	31,800	(100)	-0.3%
80-811000	REPAIR AND MAINTENANCE	9,900	9,900	0	0.0%
80-811100	AUTOMOTIVE REPAIR & MAINTENANCE	7,200	7,300	(100)	-1.4%
90-000000	TOTAL GOVERNMENT	122,400	122,400	0	0.0%
90-910000	FEDERAL GOVERNMENT	14,300	14,200	100	0.7%
90-940000	STATE AND LOCAL GOVERNMENT	108,100	108,200	(100)	-0.1%
90-920000	STATE GOVERNMENT	30,100	30,100	0	0.0%
90-921611	STATE EDUCATION	13,900	13,900	0	0.0%
90-929999	STATE ADMINISTRATION	16,200	16,200	0	0.0%
90-930000	LOCAL GOVERNMENT	78,000	78,100	(100)	-0.1%
90-931611	LOCAL EDUCATION	40,500	40,300	200	0.5%
90-939999	LOCAL ADMINISTRATION	37,500	37,800	(300)	-0.8%