

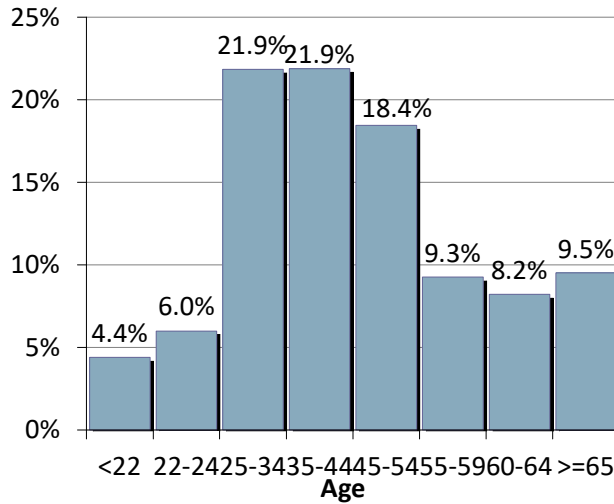
**Unemployment Insurance
Claimant Characteristics
January 2026**

Gender of the Insured Unemployed

Male	8,070	72.4%
Female	3,066	27.5%
N/A	14	0.13%
Total	11,150	100%

Age of the Insured Unemployed

<22	490	4.4%
22-24	668	6.0%
25-34	2,437	21.9%
35-44	2,441	21.9%
45-54	2,057	18.4%
55-59	1,032	9.3%
60-64	916	8.2%
>=65	1,060	9.5%
INA	49	INA
Total	11,150	100%



Race of the Insured Unemployed

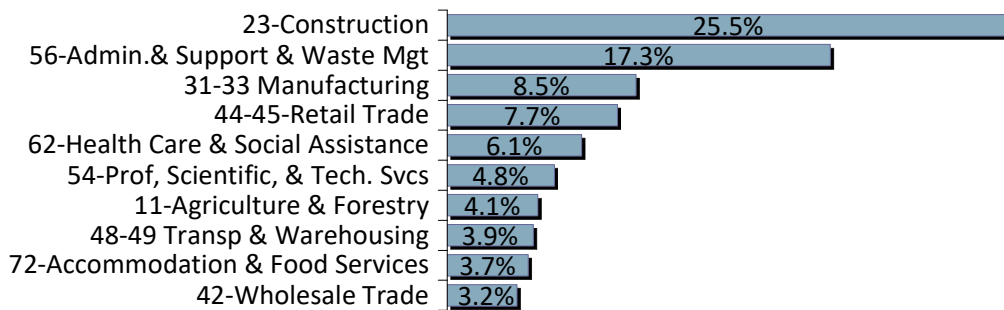
Native Am.	339	2.7%
Asian	122	1.0%
African Am.	159	1.3%
Pacific Islander	82	0.7%
White	9,436	76.5%
INA	2,203	17.9%
* Total	12,341	100%

Ethnicity of the Insured Unemployed

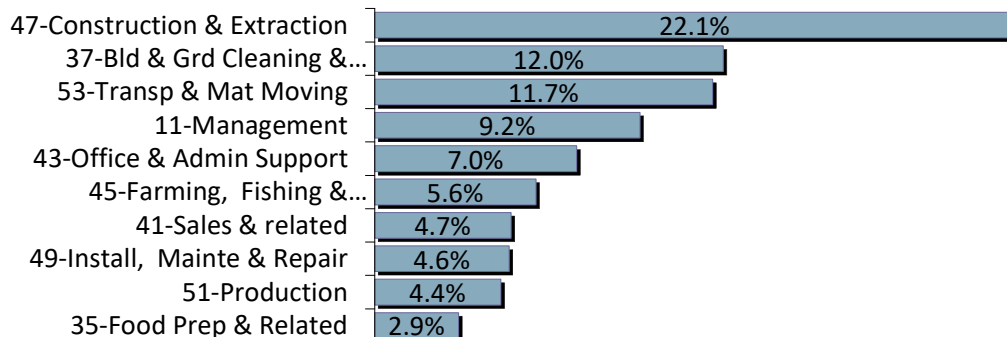
Hispanic/Latino	2,091	18.8%
Non-Hispanic/Latino	7,914	71.0%
INA	1,145	10.3%
Total	11,150	100.0%

*** Some Claimants choose more than one race category**

What industries did the claimants work in?



What occupations did the claimants hold?



**Unemployment Insurance
Claimant Characteristics
January 2026**

Demographics	January 2026		December 2025		Monthly Difference	January 2025		Yearly Difference
Gender:								
Male	8,070	72.4%	5,907	69.0%	2,163	7,726	72.9%	344
Female	3,066	27.5%	2,643	30.9%	423	2,875	27.1%	191
INA	14	0.1%	7	0.1%	7	0	0.0%	14
Total	11,150		8,557		2,593	10,601		549
Race: NOTE: Claimants may choose more than one Race category								
Native American	339	N/A	266	N/A	73	327	N/A	12
Asian	122	N/A	116	N/A	6	96	N/A	26
African American	159	N/A	140	N/A	19	139	N/A	20
Pacific Islander	82	N/A	61	N/A	21	71	N/A	11
White	9,436	N/A	7,280	N/A	2,156	8,940	N/A	496
INA	2,203	N/A	1,509	N/A	694	2,279	N/A	-76
Ethnicity:								
Hispanic/Latino	2,091	18.8%	1,310	15.3%	781	2,115	20.0%	-24
Non-Hispanic/Latino	7,914	71.0%	6,366	74.4%	1,548	7,436	70.1%	478
INA	1,145	10.3%	881	10.3%	264	1,050	9.9%	95
Age:								
<22	490	4.4%	292	3.4%	198	533	5.0%	-43
22-24	668	6.0%	412	4.8%	256	710	6.7%	-42
25-34	2,437	21.9%	1,743	20.4%	694	2,445	23.1%	-8
35-44	2,441	21.9%	1,853	21.7%	588	2,276	21.5%	165
45-54	2,057	18.4%	1,654	19.3%	403	2,081	19.6%	-24
55-59	1,032	9.3%	827	9.7%	205	965	9.1%	67
60-64	916	8.2%	783	9.2%	133	906	8.5%	10
>=65	1,060	9.5%	939	11.0%	121	685	6.5%	375
Total	11,101		8,503		2,598	10,601		500

**Unemployment Insurance
Claimant Characteristics ***
January 2026

Industry	January 2026		December 2025		Monthly Difference	January 2025		Yearly Difference
23-Construction	2,839	25%	1,830	21%	1,009	2,878	27%	-39
56-Admin.& Support & Waste Mgt	1,933	17%	1,317	15%	616	1,805	17%	128
31-33 Manufacturing	953	9%	816	10%	137	989	9%	-36
44-45-Retail Trade	858	8%	649	8%	209	910	9%	-52
62-Health Care & Social Assistance	679	6%	469	5%	210	611	6%	68
54-Prof, Scientific, & Tech. Svcs	540	5%	540	6%	0	500	5%	40
11-Agriculture & Forestry	457	4%	383	4%	74	471	4%	-14
48-49 Transp & Warehousing	434	4%	321	4%	113	407	4%	27
72-Accommodation & Food Services	408	4%	372	4%	36	431	4%	-23
42-Wholesale Trade	352	3%	323	4%	29	307	3%	45
INA*	334	3%	317	4%	17	3	0%	331
92-Public Administration	269	2%	215	3%	54	237	2%	32
71-Arts, Entertainment & Recreation	256	2%	231	3%	25	216	2%	40
52-Finance & Insurance	203	2%	183	2%	20	147	1%	56
81-Other Services (ex Public Admin)	161	1%	151	2%	10	176	2%	-15
61-Educational Services	123	1%	135	2%	-12	123	1%	0
53-Real Estate & Rental & Leasing	113	1%	94	1%	19	104	1%	9
21-Mining	91	1%	81	1%	10	78	1%	13
51-Information	88	1%	99	1%	-11	139	1%	-51
22-Utilities	34	0%	14	0%	20	49	0%	-15
55-Mgt of Companies & Enterprises	25	0%	17	0%	8	20	0%	5
Total	11,150		8,557		2,593	10,601		549

Occupations	January 2026		December 2025		Monthly Difference	January 2025		Yearly Difference
47-Construction & Extraction	2,464	22%	1,605	19%	859	2,395	23%	69
37-Bld & Grd Cleaning & Maint	1,342	12%	835	10%	507	1,299	12%	43
53-Transp & Mat Moving	1,301	12%	815	10%	486	1,270	12%	31
11-Management	1,022	9%	902	11%	120	971	9%	51
43-Office & Admin Support	778	7%	686	8%	92	731	7%	47
45-Farming, Fishing & Forestry	622	6%	485	6%	137	609	6%	13
41-Sales & related	525	5%	485	6%	40	482	5%	43
49-Install, Mainte & Repair	518	5%	397	5%	121	419	4%	99
51-Production	486	4%	459	5%	27	579	5%	-93
35-Food Prep & Related	323	3%	266	3%	57	327	3%	-4
13-Business Financial	288	3%	314	4%	-26	256	2%	32
15-Computer Math	179	2%	187	2%	-8	199	2%	-20
31-Healthcare Support	175	2%	188	2%	-13	135	1%	40
17-Architect & Engineer	160	1%	141	2%	19	135	1%	25
25-Ed Training & Library	130	1%	74	1%	56	128	1%	2
33-Protective Svcs	124	1%	98	1%	26	84	1%	40
39-Personal Care & Svcs	112	1%	87	1%	25	84	1%	28
27-Art Design, Entert Spt & Media	111	1%	97	1%	14	80	1%	31
29-Healthcare Pract & Tech	109	1%	132	2%	-23	105	1%	4
21-Community & Social Svcs	100	1%	74	1%	26	59	1%	41
19-Life Phys Social	72	1%	56	1%	16	64	1%	8
23-Legal	29	0%	25	0%	4	14	0%	15
55-Military Specific	7	0%	5	0%	2	5	0%	2
INA*	173	2%	144	2%	29	171	2%	2
Total	11,150		8,557		2,593	10,601		549

* This data reflects UI claims characteristics for the pay period including the 12th of the month.