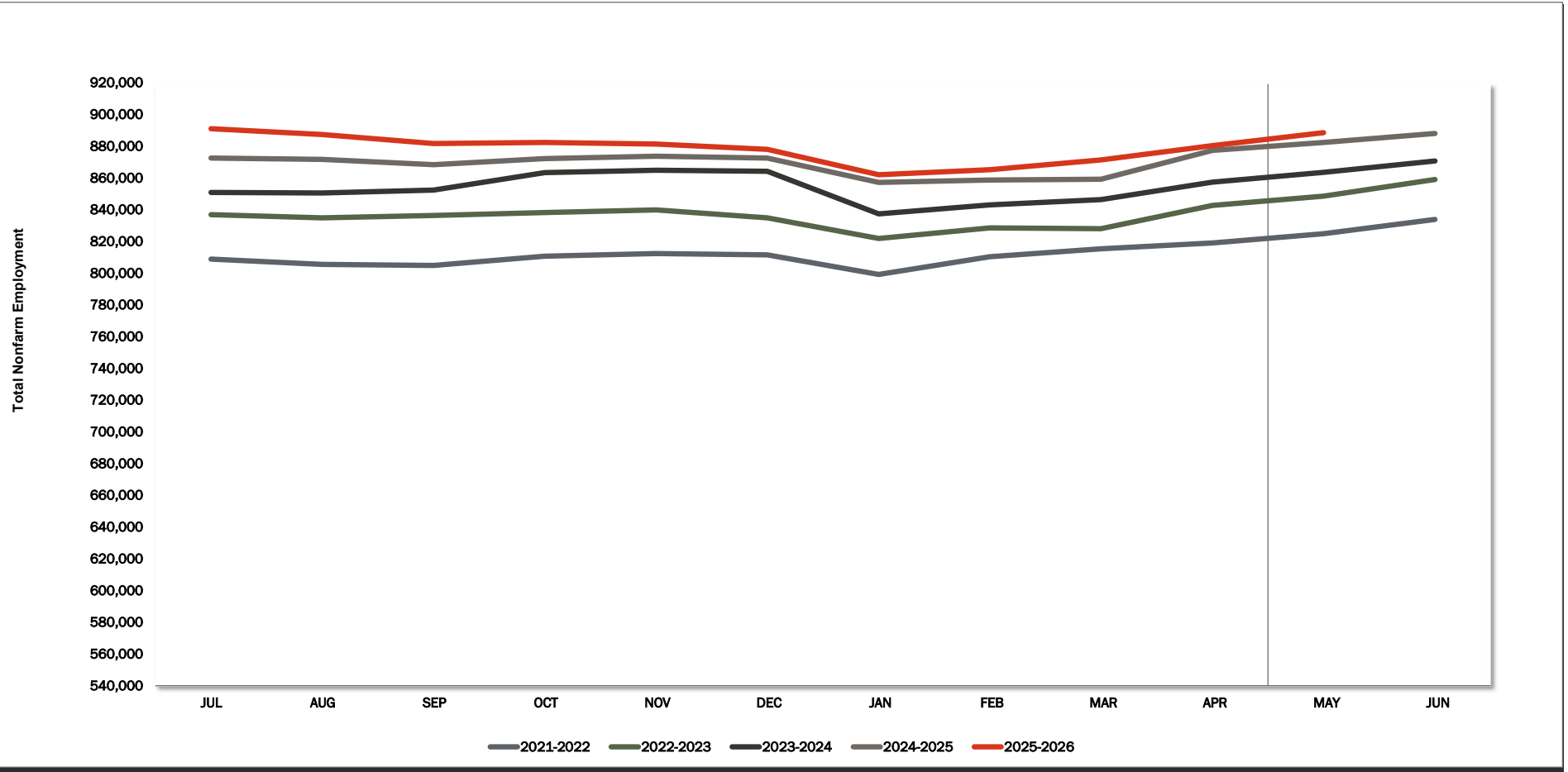
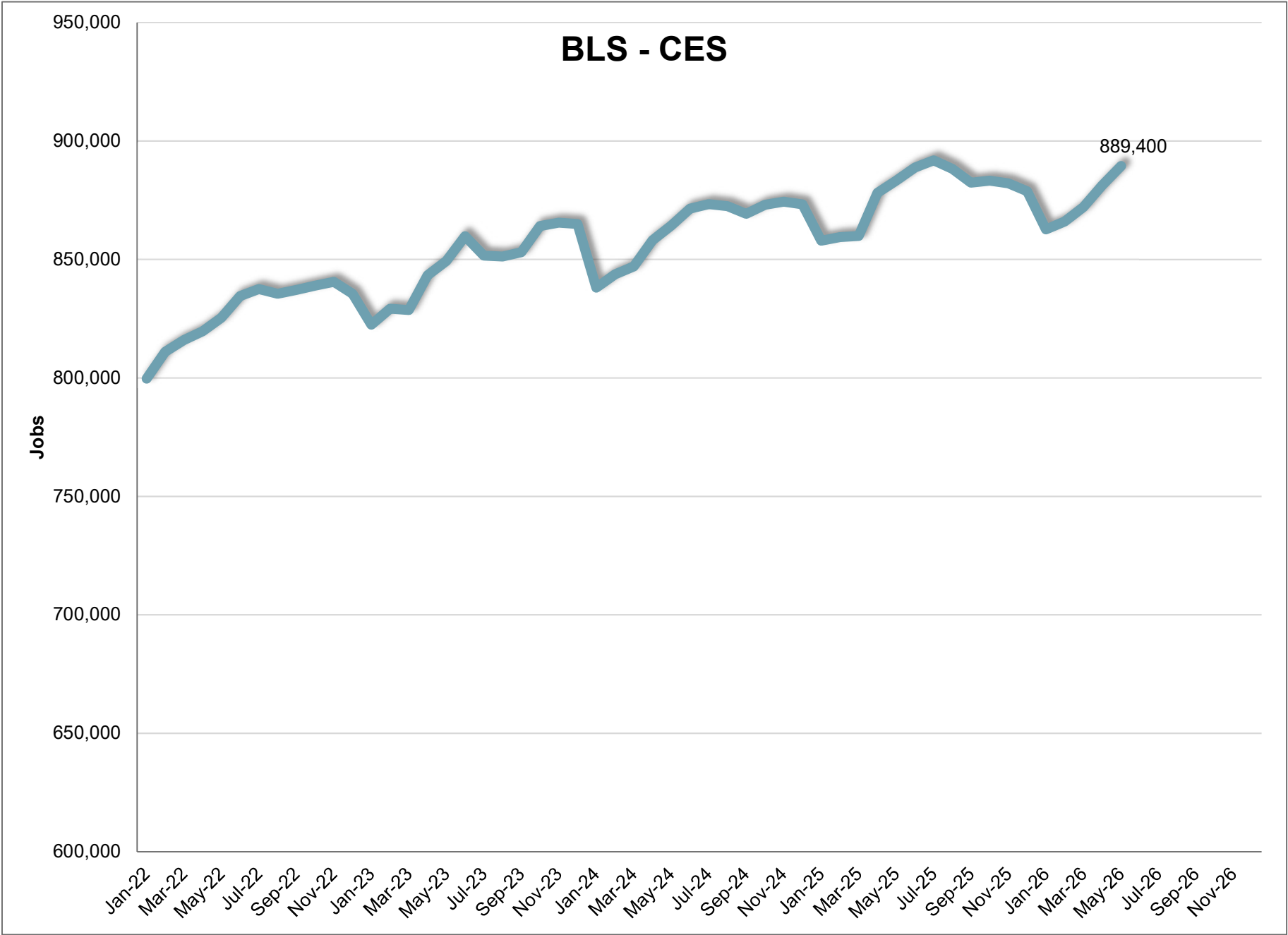


# BLS CES



	JAN	FEB	MAR	APR	MAY	JUN	JUL	AUG	SEP	OCT	NOV	DEC	12 Mth Avg
2020	757,400	763,800	766,400	692,500	723,300	749,700	759,000	762,200	767,300	772,000	774,600	773,500	755,100
2021	762,700	772,900	779,700	788,600	796,200	805,800	809,500	806,100	805,400	811,300	813,000	812,100	796,900
2022	799,700	811,000	815,900	819,700	825,400	834,500	837,500	835,500	837,100	838,900	840,500	835,500	827,600
2023	822,400	829,200	828,600	843,300	849,300	859,800	851,600	851,200	853,000	864,100	865,500	864,900	848,600
2024	838,100	843,700	847,000	858,100	864,300	871,400	873,300	872,500	869,200	873,000	874,400	873,200	863,200
2025	857,900	859,400	859,900	878,100	883,200	888,800	891,900	888,200	882,400	883,200	882,100	878,800	877,800
2026	862,700	866,000	872,100	881,200	889,400								
	<b>Mnth-Mnth % Change</b>												
2025	-1.8%	0.2%	0.1%	2.1%	0.6%	0.6%	0.3%	-0.4%	-0.7%	0.1%	-0.1%	-0.4%	
2026	-1.8%	0.4%	0.7%	1.0%	0.9%								
5-MTM Avg	-1.9%	0.9%	0.4%	1.4%	0.7%								
	<b>Year-Year % Change</b>												<b>Avg</b>
2025	2.4%	1.9%	1.5%	2.3%	2.2%	2.0%	2.1%	1.8%	1.5%	1.2%	0.9%	0.6%	1.7%
2026	0.6%	0.8%	1.4%	0.4%	0.7%								
5-YTY Avg	2.5%	2.4%	2.3%	5.0%	4.1%								



**May 2026**

**Current Employment Statistics**

**Confidence Interval Bounds of Selected Month's Estimate**

Industry Title	Current Month	Estimated Change			Confidence Interval Bounds of Selected Month's Estimate					
		1 Month	3 Month	12 Month	1 Month		3 Month		12 Month	
					+	-	+	-	+	-
Total Nonfarm	889,400	8,200	23,400	4,600	12,605	3,795	30,748	16,052	18,434	-9,234
Total Private	759,000	9,100	24,000	2,600	13,449	4,751	31,251	16,749	16,239	-11,039
Goods Producing	160,200	3,700	7,600	0	5,677	1,723	10,887	4,313	6,215	-6,215
Private Service Providing	598,800	5,400	16,400	2,600	9,272	1,528	22,863	9,937	14,742	-9,542
Mining and Logging	4,500	100	200	100	279	-79	532	-132	816	-616
Mining, Logging, and Construction	83,800	3,500	6,000	1,300	5,051	1,949	8,525	3,475	5,891	-3,291
Construction	79,300	3,400	5,800	1,200	4,941	1,859	8,304	3,296	5,735	-3,335
Manufacturing	76,400	200	1,600	-1,300	1,426	-1,026	3,704	-504	2,888	-5,488
Durable Goods	44,800	300	1,600	300	1,303	-703	3,304	-104	3,618	-3,018
Non-Durable Goods	31,600	-100	0	-1,600	604	-804	1,234	-1,234	956	-4,156
Trade, Transportation, and Utilities	166,500	800	3,800	3,900	2,450	-850	6,608	992	9,118	-1,318
Wholesale Trade	36,200	300	900	1,500	1,004	-404	2,065	-265	3,828	-828
Retail Trade	96,200	200	2,800	2,000	1,345	-945	4,688	912	5,408	-1,408
Transportation and Utilities	34,100	300	100	400	1,257	-657	1,821	-1,621	3,591	-2,791
Information	8,700	-100	0	-500	166	-366	474	-474	546	-1,546
Financial Activities	42,600	-100	700	-500	566	-766	1,848	-448	1,956	-2,956
Professional and Business Services	112,600	700	4,700	100	2,516	-1,116	7,724	1,676	5,971	-5,771
Professional, Scientific, and Technical Services	55,100	-300	-400	-1,800	425	-1,025	830	-1,630	763	-4,363
Management of Companies and Enterprises	9,000	100	200	100	245	-45	465	-65	677	-477
Administrative and Support and Waste Managem	48,500	900	4,900	1,800	2,558	-758	7,649	2,151	7,051	-3,451
Education and health services	145,600	500	1,800	7,600	2,152	-1,152	4,470	-870	12,579	2,621
Educational Services	18,800	600	600	1,500	1,240	-40	1,752	-552	3,224	-224
Health Care and Social Assistance	126,800	-100	1,200	6,100	1,423	-1,623	3,608	-1,208	10,772	1,428
Leisure and Hospitality	92,000	2,900	4,000	-6,700	5,075	725	7,693	307	74	-13,474
Arts, Entertainment, and Recreation	14,300	800	1,700	-2,200	1,937	-337	3,758	-358	1,218	-5,618
Accommodation and Food Services	77,700	2,100	2,300	-4,500	3,954	246	5,366	-766	1,348	-10,348
Other Services	30,800	700	1,400	-1,300	1,703	-303	2,964	-164	1,511	-4,111

For information on Bureau of Labor Statistic confidence interval calculations, please visit:

[www.bls.gov/sae/790stderr.htm](http://www.bls.gov/sae/790stderr.htm)

# BLS CES

		May							2026			
NAICS	Category	MAY	APR	MAY-2025	Change	%	5 Yr Avg	Yr-to-Yr Change	%	5 Yr Avg		
00-000000	Total Nonfarm	889,400	881,200	883,200	8,200	0.9%	0.7%	6,200	0.7%	4.1%		
05-000000	Total Private	759,000	749,900	751,900	9,100	1.2%	0.9%	7,100	0.9%	4.6%		
06-000000	Goods Producing	160,200	156,500	155,200	3,700	2.4%	1.3%	5,000	3.2%	4.3%		
07-000000	Service Providing, (Inc. Gov)	729,200	724,700	728,000	4,500	0.6%	0.6%	1,200	0.2%	4.1%		
08-000000	Private Service Providing	598,800	593,400	596,700	5,400	0.9%	0.8%	2,100	0.4%	4.7%		
10-000000	Natural Resources	4,500	4,400	4,400	100	2.3%	8.4%	100	2.3%	4.8%		
20-000000	Construction	79,300	75,900	75,700	3,400	4.5%	2.4%	3,600	4.8%	6.3%		
20-236000	Construction of Buildings	17,600	17,500	17,600	100	0.6%	1.3%	0	0.0%	5.5%		
20-236100	Residential Building Const.	10,400	10,200	9,900	200	2.0%	1.1%	500	5.1%	5.0%		
20-237000	Heavy And Civil Const.	9,100	8,600	8,400	500	5.8%	4.9%	700	8.3%	5.0%		
20-238000	Specialty Trade Contractors	52,600	49,800	49,700	2,800	5.6%	2.4%	2,900	5.8%	6.8%		
20-238100	Foundtn, Strctre, Blding Contract	12,500	11,800	12,100	700	5.9%	2.9%	400	3.3%	4.8%		
20-238200	Building Equipment Contractors	21,000	20,000	19,600	1,000	5.0%	1.0%	1,400	7.1%	9.0%		
20-238300	Building Finishing Contractors	9,300	8,800	8,800	500	5.7%	1.5%	500	5.7%	4.2%		
20-238900	Other Specialty Trade Contractors	9,800	9,200	9,200	600	6.5%	5.6%	600	6.5%	8.3%		
30-000000	Manufacturing	76,400	76,200	75,100	200	0.3%	0.0%	1,300	1.7%	2.5%		
31-000000	Durable Goods	44,800	44,500	43,000	300	0.7%	0.1%	1,800	4.2%	2.5%		
31-334000	Computer And Elect. Manufact.	10,600	10,600	10,600	0	0.0%	0.0%	0	0.0%	-1.4%		
32-000000	Nondurable Goods	31,600	31,700	32,100	-100	-0.3%	-0.1%	-500	-1.6%	2.5%		
32-311000	Food Manufacturing	21,100	21,100	21,100	0	0.0%	-0.3%	0	0.0%	2.3%		
32-311400	Fruit & Vegetable Manufacturing	7,300	7,300	7,500	0	0.0%	-0.5%	-200	-2.7%	1.7%		
40-000000	Trade, Transportation, & Utilities	166,500	165,700	164,500	800	0.5%	0.5%	2,000	1.2%	3.4%		
41-000000	Wholesale Trade	36,200	35,900	36,700	300	0.8%	0.4%	-500	-1.4%	3.6%		
41-424000	Merchant Whsalers Nondur. Gds	14,100	14,000	14,800	100	0.7%	0.1%	-700	-4.7%	3.2%		
42-000000	Retail Trade	96,200	96,000	94,300	200	0.2%	0.6%	1,900	2.0%	2.4%		
42-441000	Motor Vehicle And Parts Dealers	15,100	15,100	15,100	0	0.0%	0.1%	0	0.0%	3.3%		
42-444000	Blding Materials & Garden Supplies	10,800	10,700	11,100	100	0.9%	3.0%	-300	-2.7%	1.4%		
42-445000	Food And Beverage Stores	17,900	17,900	17,700	0	0.0%	0.4%	200	1.1%	2.4%		
42-452000	General Merchandise Stores	18,100	18,200	18,200	-100	-0.5%	#N/A	-100	-0.5%	#N/A		
42-452200	Department Stores	3,000	3,000	2,900	0	0.0%	#N/A	100	3.4%	#N/A		
42-452300	Other General Merchandise Stores	15,100	15,200	15,300	-100	-0.7%	#N/A	-200	-1.3%	#N/A		
43-000000	Transport, Wrhouse, And Utilities	34,100	33,800	33,500	300	0.9%	0.2%	600	1.8%	6.4%		
43-220000	Utilities	3,600	3,600	3,600	0	0.0%	1.8%	0	0.0%	3.8%		
43-400089	Transportation And Warehousing	30,500	30,200	29,900	300	1.0%	0.0%	600	2.0%	6.8%		
43-484000	Truck Transportation	10,100	10,100	10,200	0	0.0%	0.2%	-100	-1.0%	0.0%		
43-484100	General Freight Trucking	6,500	6,500	6,700	0	0.0%	0.0%	-200	-3.0%	-0.8%		
50-000000	Information	8,700	8,800	8,900	-100	-1.1%	1.0%	-200	-2.2%	4.9%		
55-000000	Financial Activities	42,600	42,700	41,800	-100	-0.2%	0.6%	800	1.9%	2.7%		
55-520000	Finance And Insurance	30,900	31,000	30,300	-100	-0.3%	0.0%	600	2.0%	1.9%		
55-530000	Real Estate And Rental And Leasing	11,700	11,700	11,500	0	0.0%	2.2%	200	1.7%	5.2%		
60-000000	Professional And Business Services	112,600	111,900	112,900	700	0.6%	1.1%	-300	-0.3%	3.0%		
60-540000	Prof., Scientific, Technical Services	55,100	55,400	54,300	-300	-0.5%	-0.3%	800	1.5%	5.2%		
60-541700	Scientific Research & Development	9,000	8,900	9,200	100	1.1%	1.0%	-200	-2.2%	5.3%		
60-550000	Mgmt. Of Companies & Enterprises	9,000	8,900	8,700	100	1.1%	0.0%	300	3.4%	4.2%		
60-560000	Admin., Support, Waste Mgmt Serv.	48,500	47,600	49,900	900	1.9%	2.7%	-1,400	-2.8%	0.7%		
60-561000	Administrative, Support Services	43,900	42,700	45,100	1,200	2.8%	3.0%	-1,200	-2.7%	0.4%		
60-561400	Business Support Services	6,400	6,300	6,500	100	1.6%	-1.3%	-100	-1.5%	-11.9%		
60-561420	Telephone Call Centers	4,600	4,600	4,800	0	0.0%	-1.6%	-200	-4.2%	-13.1%		
60-561700	Services To Buildings And Dwellings	17,900	17,000	16,600	900	5.3%	7.5%	1,300	7.8%	4.7%		
65-000000	Education And Health Services	145,600	145,100	143,500	500	0.3%	-0.4%	2,100	1.5%	5.7%		
65-610000	Educational Services	18,800	18,200	16,900	600	3.3%	1.6%	1,900	11.2%	8.1%		
65-620000	Health Care And Social Services	126,800	126,900	126,600	-100	-0.1%	-0.6%	200	0.2%	5.5%		
65-621000	Ambulatory Health Care	54,600	54,700	55,700	-100	-0.2%	-2.4%	-1,100	-2.0%	3.0%		
65-622000	Hospitals	35,900	35,900	34,800	0	0.0%	0.0%	1,100	3.2%	8.0%		
65-623000	Nursing & Residential Care Facilities	16,800	16,800	16,400	0	0.0%	0.1%	400	2.4%	1.0%		
65-624000	Social Assistance	19,500	19,500	19,700	0	0.0%	0.9%	-200	-1.0%	5.7%		
70-000000	Leisure And Hospitality	92,000	89,100	95,500	2,900	3.3%	2.5%	-3,500	-3.7%	9.5%		
70-710000	Arts, Entertainment, Recreation	14,300	13,500	16,500	800	5.9%	5.4%	-2,200	-13.3%	13.8%		
70-713000	Amusement Gambling, Recreation	11,600	10,900	13,600	700	6.4%	5.2%	-2,000	-14.7%	12.9%		
70-713900	Other Amusement & Recreation Ind.	10,100	9,600	11,300	500	5.2%	1.8%	-1,200	-10.6%	10.8%		
70-720000	Accommodation And Food Services	77,700	75,600	79,000	2,100	2.8%	2.0%	-1,300	-1.6%	8.8%		
70-721000	Accommodations	11,000	10,500	10,800	500	4.8%	4.6%	200	1.9%	12.3%		
70-722000	Food Service And Drinking Places	66,700	65,100	68,200	1,600	2.5%	1.6%	-1,500	-2.2%	8.3%		
70-722511	Full Service Restaurants	25,100	24,400	26,600	700	2.9%	1.4%	-1,500	-5.6%	10.6%		
70-722590	Limited Service Restaurants	35,900	34,800	35,900	1,100	3.2%	1.2%	0	0.0%	5.9%		
80-000000	Other Services	30,800	30,100	29,600	700	2.3%	1.0%	1,200	4.1%	4.3%		
80-811100	Automotive Repair & Maintenance	7,200	7,000	7,100	200	2.9%	0.9%	100	1.4%	4.5%		
90-000000	Total Government	130,400	131,300	131,300	-900	-0.7%	-0.1%	-900	-0.7%	1.6%		
90-910000	Federal Government	13,700	13,200	14,500	500	3.8%	4.4%	-800	-5.5%	0.8%		
90-940000	State And Local Government	116,700	118,100	116,800	-1,400	-1.2%	-0.6%	-100	-0.1%	1.8%		
90-920000	State Government	29,400	32,300	31,000	-2,900	-9.0%	-5.1%	-1,600	-5.2%	1.3%		
90-921611	State Education	13,200	16,100	14,600	-2,900	-18.0%	-10.6%	-1,400	-9.6%	1.7%		
90-929999	State Administration	16,200	16,200	16,400	0	0.0%	0.6%	-200	-1.2%	1.1%		
90-930000	Local Government	87,300	85,800	85,800	1,500	1.7%	1.1%	1,500	1.7%	1.9%		
90-931611	Local Education	48,600	47,900	47,900	700	1.5%	0.6%	700	1.5%	3.6%		
90-939999	Local Administration	38,700	37,900	37,900	800	2.1%	1.7%	800	2.1%	0.1%		

\* = Average is based on the previous five years of experience.

# BLS CES

## PRELIMINARY AND FINAL ESTIMATE COMPARISON

April - 2026

NAICS	Category	Final	Preliminary	Change	%
00-000000	TOTAL NONFARM	881,200	879,500	1,700	0.2%
05-000000	TOTAL PRIVATE	749,900	748,300	1,600	0.2%
06-000000	GOODS PRODUCING	156,500	156,300	200	0.1%
07-000000	SERVICE PROVIDING, (INC. GOV)	724,700	723,200	1,500	0.2%
08-000000	PRIVATE SERVICE PROVIDING	593,400	592,000	1,400	0.2%
10-000000	NATURAL RESOURCES	4,400	4,400	0	0.0%
20-000000	CONSTRUCTION	75,900	75,900	-	0.0%
20-236000	CONSTRUCTION OF BUILDING	17,500	17,500	0	0.0%
20-236100	RESIDENTIAL BUILDING CONST.	10,200	10,200	0	0.0%
20-237000	HEAVY AND CIVIL CONST.	8,600	8,600	0	0.0%
20-238000	SPECIALTY TRADE CONTRACTORS	49,800	49,800	0	0.0%
20-238100	FOUNDN, STRCTRE, BLDING CONTRACT	11,800	11,800	0	0.0%
20-238200	BUILDING EQUIPMENT CONTRACTORS	20,000	20,000	0	0.0%
20-238300	BUILDING FINISHING CONTRACTORS	8,800	8,800	0	0.0%
20-238900	OTHER SPECIALTY TRADE CONTRACTORS	9,200	9,200	0	0.0%
30-000000	MANUFACTURING	76,200	76,000	200	0.3%
31-000000	DURABLE GOODS	44,500	44,500	0	0.0%
31-334000	COMPUTER AND ELECT. MANUFACT.	10,600	10,600	0	0.0%
31-334400	SEMICONDUCTOR & OTHR ELECT. MANUF.	8,100	8,100	0	0.0%
32-000000	NONDURABLE GOODS	31,700	31,500	200	0.6%
32-311000	FOOD MANUFACTURING	21,100	21,000	100	0.5%
32-311400	FRUIT & VEGETABLE MANUFACTURING	7,300	7,300	0	0.0%
40-000000	TRADE, TRANSPORTATION, & UTILITIES	165,700	165,600	100	0.1%
41-000000	WHOLESALE TRADE	35,900	35,800	100	0.3%
41-424000	MERCHANT WHLSALERS NONDUR. GDS	14,000	14,000	0	0.0%
42-000000	RETAIL TRADE	96,000	96,000	0	0.0%
42-441000	MOTOR VEHICLE AND PARTS DEALERS	15,100	14,900	200	1.3%
42-444000	BLDING MATERIALS & GARDEN SUPPLIES	10,700	10,500	200	1.9%
42-445000	FOOD AND BEVERAGE STORES	17,900	17,700	200	1.1%
42-452000	GENERAL MERCHANDISE STORES	18,200	18,200	0	0.0%
42-452200	DEPARTMENT STORES	3,000	3,000	0	0.0%
42-452300	OTHER GENERAL MERCHANDISE STORES	15,200	15,200	0	0.0%
43-000000	TRANSPORT., WRHOUSE, AND UTILITIES	33,800	33,800	0	0.0%
43-220000	UTILITIES	3,600	3,600	0	0.0%
43-400089	TRANSPORTATION AND WAREHOUSING	30,200	30,200	0	0.0%
43-484000	TRUCK TRANSPORTATION	10,100	10,100	0	0.0%
43-484100	GENERAL FREIGHT TRUCKING	6,500	6,500	0	0.0%
50-000000	INFORMATION	8,800	8,800	0	0.0%
55-000000	FINANCIAL ACTIVITIES	42,700	42,800	(100)	-0.2%
55-520000	FINANCE AND INSURANCE	31,000	31,100	(100)	-0.3%
55-530000	REAL ESTATE AND RENTAL AND LEASING	11,700	11,700	0	0.0%
60-000000	PROFESSIONAL AND BUSINESS SERVICES	111,900	111,300	600	0.5%
60-540000	PROF., SCIENTIFIC, TECHNICAL SERVICES	55,400	55,500	(100)	-0.2%
60-541700	SCIENTIFIC RESEARCH & DEVELOPMENT	8,900	8,900	0	0.0%
60-550000	MGMNT. OF COMPANIES & ENTERPRISES	8,900	8,900	0	0.0%
60-560000	ADMIN., SUPPORT, WASTE MGMNT SERV.	47,600	46,900	700	1.5%
60-561000	ADMINISTRATIVE, SUPPORT SERVICES	42,700	41,800	900	2.2%
60-561400	BUSINESS SUPPORT SERVICES	6,300	6,300	0	0.0%
60-561420	TELEPHONE CALL CENTERS	4,600	4,600	0	0.0%
60-561700	SERVICES TO BUILDINGS AND DWELLINGS	17,000	16,900	100	0.6%
65-000000	EDUCATION AND HEALTH SERVICES	145,100	145,100	0	0.0%
65-610000	EDUCATIONAL SERVICES	18,200	18,100	100	0.6%
65-620000	HEALTH CARE AND SOCIAL SERVICES	126,900	127,000	(100)	-0.1%
65-621000	AMBULATORY HEALTH CARE	54,700	54,900	(200)	-0.4%
65-622000	HOSPITALS	35,900	35,900	0	0.0%
65-623000	NURSING & RESIDENTIAL CARE FACILITIES	16,800	16,800	0	0.0%
65-624000	SOCIAL ASSISTANCE	19,500	19,400	100	0.5%
70-000000	LEISURE AND HOSPITALITY	89,100	88,700	400	0.5%
70-710000	ARTS, ENTERTAINMENT, RECREATION	13,500	13,200	300	2.3%
70-713000	AMUSEMENT GAMBLING, RECREATION	10,900	10,700	200	1.9%
70-713900	OTHER AMUSEMENT & RECREATION IND.	9,600	9,300	300	3.2%
70-720000	ACCOMMODATION AND FOOD SERVICES	75,600	75,500	100	0.1%
70-721000	ACCOMMODATIONS	10,500	10,500	0	0.0%
70-722000	FOOD SERVICE AND DRINKING PLACES	65,100	65,000	100	0.2%
70-722511	FULL SERVICE RESTAURANTS	24,400	24,600	(200)	-0.8%
70-722590	LIMITED SERVICE RESTAURANTS	34,800	34,600	200	0.6%
80-000000	OTHER SERVICES	30,100	29,700	400	1.3%
80-811100	AUTOMOTIVE REPAIR & MAINTENANCE	7,000	7,000	0	0.0%
90-000000	TOTAL GOVERNMENT	131,300	131,200	100	0.1%
90-910000	FEDERAL GOVERNMENT	13,200	13,200	0	0.0%
90-940000	STATE AND LOCAL GOVERNMENT	118,100	118,000	100	0.1%
90-920000	STATE GOVERNMENT	32,300	32,300	0	0.0%
90-921611	STATE EDUCATION	16,100	16,100	0	0.0%
90-929999	STATE ADMINISTRATION	16,200	16,200	0	0.0%
90-930000	LOCAL GOVERNMENT	85,800	85,700	100	0.1%
90-931611	LOCAL EDUCATION	47,900	47,900	0	0.0%
90-939999	LOCAL ADMINISTRATION	37,900	37,800	100	0.3%