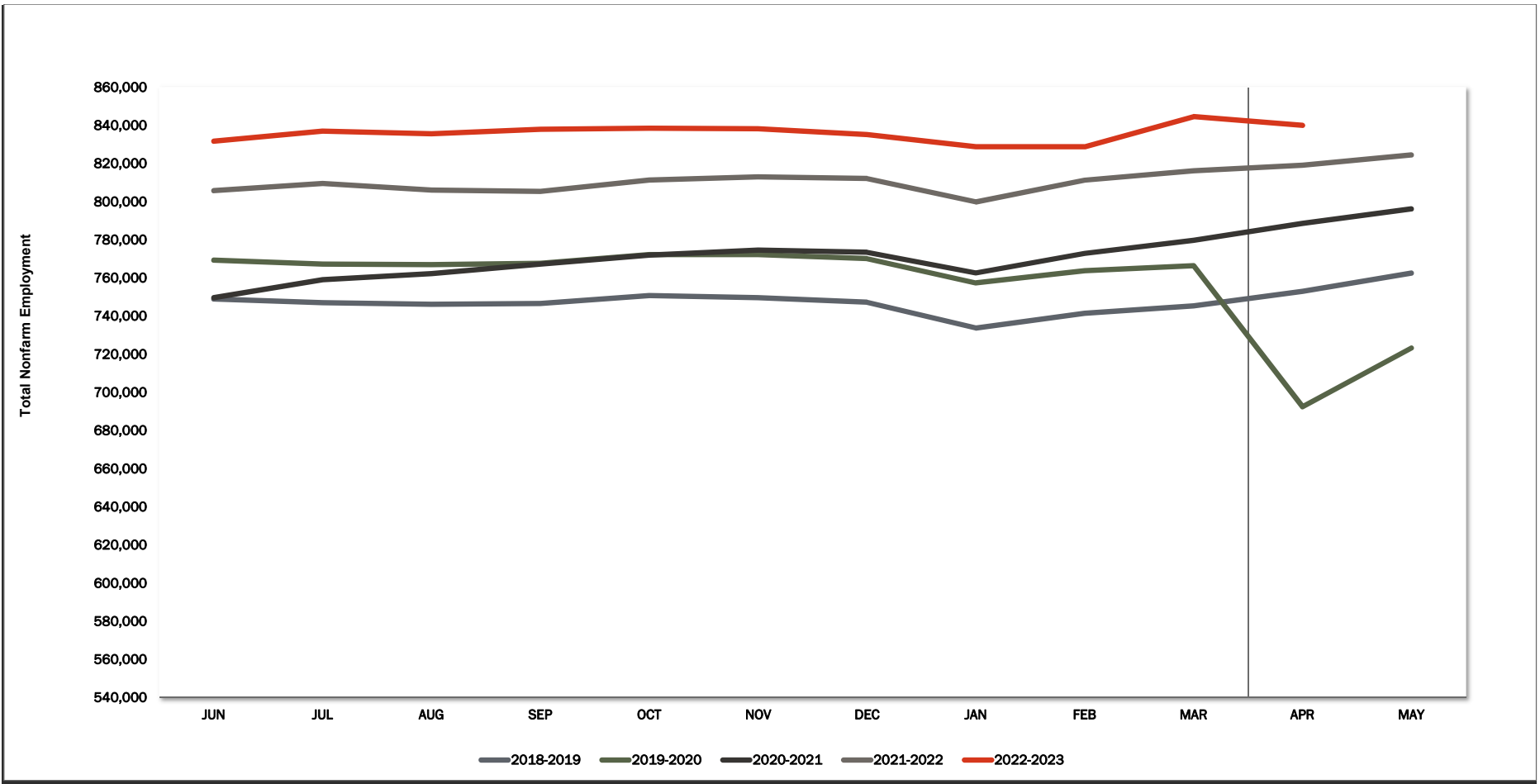
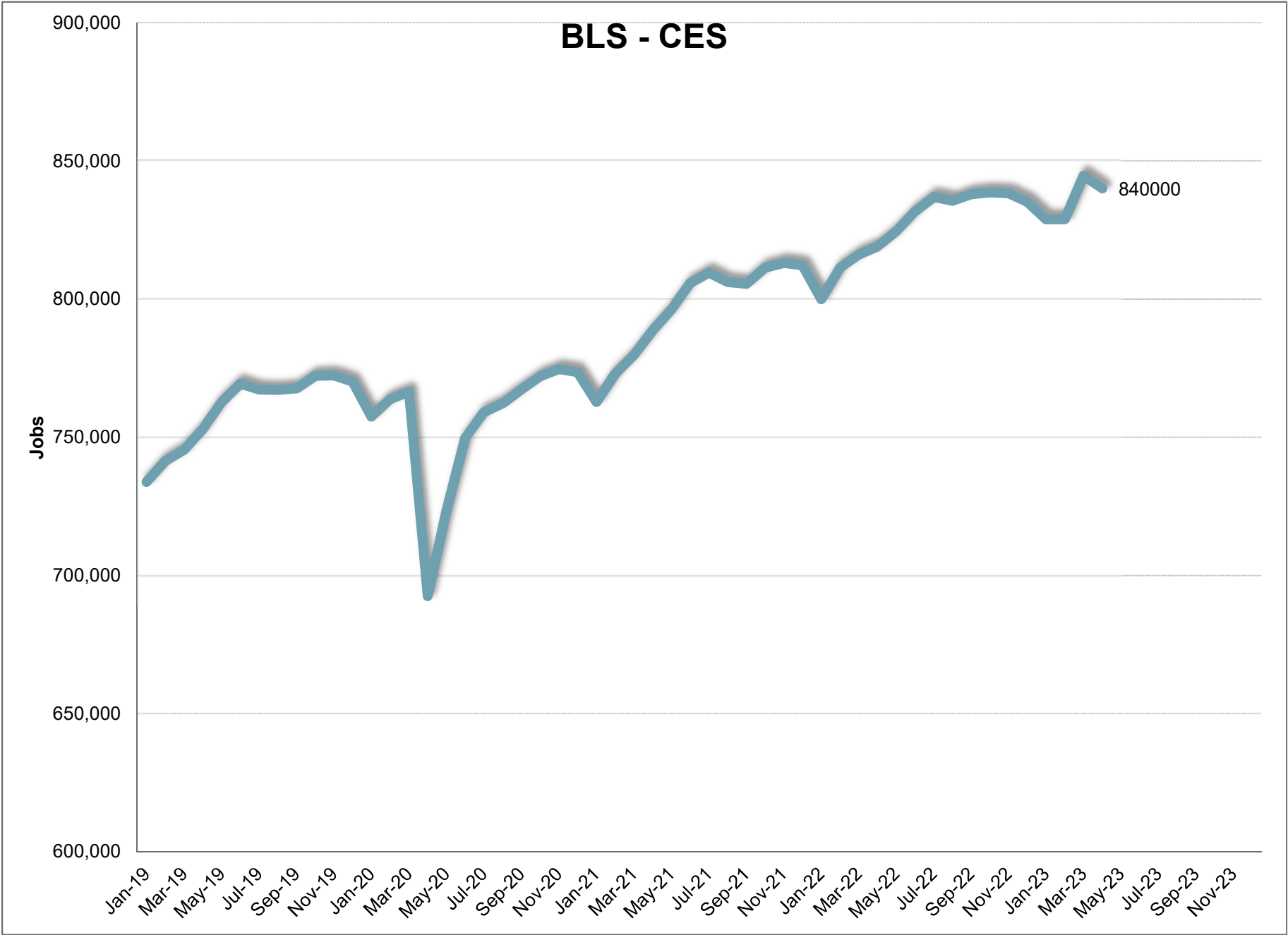


# BLS CES



	JAN	FEB	MAR	APR	MAY	JUN	JUL	AUG	SEP	OCT	NOV	DEC	12 Mth Avg
2017	688,800	695,500	703,700	707,300	716,700	725,100	721,000	720,200	725,300	725,700	725,200	723,200	714,800
2018	710,300	719,600	724,700	731,200	740,100	748,900	747,000	746,200	746,600	750,700	749,700	747,300	738,500
2019	733,800	741,400	745,400	752,900	762,600	769,300	767,200	767,000	767,600	772,200	772,300	770,100	760,200
2020	757,400	763,800	766,400	692,500	723,300	749,700	759,000	762,200	767,300	772,000	774,600	773,500	755,100
2021	762,700	772,900	779,700	788,600	796,200	805,800	809,500	806,100	805,400	811,300	813,000	812,100	796,900
2022	799,900	811,300	816,100	819,000	824,500	831,700	836,900	835,500	837,900	838,500	838,200	835,100	827,100
2023	828,800	828,800	844,600	840,000									
<b>Mnth-Mnth % Change</b>													
2022	-1.5%	1.4%	0.6%	0.4%	0.7%	0.9%	0.6%	-0.2%	0.3%	0.1%	0.0%	-0.4%	
2023	-0.8%	0.0%	1.9%	-0.5%									
5-MTM Avg	-1.6%	1.2%	0.6%	-1.2%									
<b>Year-Year % Change</b>													
2022	4.9%	5.0%	4.7%	3.9%	3.6%	3.2%	3.4%	3.6%	4.0%	3.4%	3.1%	2.8%	3.8%
2023	3.6%	2.2%	3.5%	2.6%									
5-YTY Avg	3.0%	3.1%	3.0%	3.2%									



**April 2023**

**Current Employment Statistics**

**Confidence Interval Bounds of Selected Month's Estimate**

Industry Title	Current Month	Estimated Change			Confidence Interval Bounds of Selected Month's Estimate					
		1 Month	3 Month	12 Month	1 Month		3 Month		12 Month	
					+	-	+	-	+	-
Total Nonfarm	840,000	-4,600	11,200	26,100	-195	-9,005	18,548	3,852	39,934	12,266
Total Private	706,900	-3,700	6,400	23,200	649	-8,049	13,651	-851	36,839	9,561
Goods Producing	141,600	-2,700	-900	5,100	-723	-4,677	2,387	-4,187	11,315	-1,115
Private Service Providing	565,300	-1,000	7,300	18,100	2,872	-4,872	13,763	837	30,242	5,958
Mining and Logging	4,000	-100	0	-200	79	-279	332	-332	516	-916
Mining, Logging, and Construction	69,700	-2,800	-500	4,800	-1,249	-4,351	2,025	-3,025	9,391	209
Construction	65,700	-2,700	-500	5,000	-1,159	-4,241	2,004	-3,004	9,535	465
Manufacturing	71,900	100	-400	300	1,326	-1,126	1,704	-2,504	4,488	-3,888
Durable Goods	41,700	200	-300	1,100	1,203	-803	1,404	-2,004	4,418	-2,218
Non-Durable Goods	30,200	-100	-100	-800	604	-804	1,134	-1,334	1,756	-3,356
Trade, Transportation, and Utilities	160,400	-400	-1,000	-2,400	1,250	-2,050	1,808	-3,808	2,818	-7,618
Wholesale Trade	36,900	100	300	1,900	804	-604	1,465	-865	4,228	-428
Retail Trade	92,200	-400	-800	-2,700	745	-1,545	1,088	-2,688	708	-6,108
Transportation and Utilities	31,300	-100	-500	-1,600	857	-1,057	1,221	-2,221	1,591	-4,791
Information	9,400	-400	300	1,500	-134	-666	774	-174	2,546	454
Financial Activities	41,400	100	200	2,000	766	-566	1,348	-948	4,456	-456
Professional and Business Services	109,600	-500	2,400	4,100	1,316	-2,316	5,424	-624	9,971	-1,771
Professional, Scientific, and Technical Services	51,500	200	1,000	2,800	925	-525	2,230	-230	5,363	237
Management of Companies and Enterprises	8,300	-100	0	300	45	-245	265	-265	877	-277
Administrative and Support and Waste Managen	49,800	-600	1,400	1,000	1,058	-2,258	4,149	-1,349	6,251	-4,251
Education and health services	127,000	600	3,500	7,800	2,252	-1,052	6,170	830	12,779	2,821
Educational Services	17,500	500	900	3,200	1,140	-140	2,052	-252	4,924	1,476
Health Care and Social Assistance	109,500	100	2,600	4,600	1,623	-1,423	5,008	192	9,272	-72
Leisure and Hospitality	89,700	-800	1,400	4,400	1,375	-2,975	5,093	-2,293	11,174	-2,374
Arts, Entertainment, and Recreation	13,200	-700	200	-1,900	437	-1,837	2,258	-1,858	1,518	-5,318
Accommodation and Food Services	76,500	-100	1,200	6,300	1,754	-1,954	4,266	-1,866	12,148	452
Other Services	27,800	400	500	700	1,403	-603	2,064	-1,064	3,511	-2,111

For information on Bureau of Labor Statistic confidence interval calculations, please visit:

[www.bls.gov/sae/790stderr.htm](http://www.bls.gov/sae/790stderr.htm)

# BLS CES

		2023									
		April							Yr-to-Yr		
NAICS	Category	APR	MAR	APR-2022	Change	%	Avg*	Change	%	Avg*	
00-000000	Total Nonfarm	840,000	844,600	819,000	-4,600	-0.5%	-1.2%	21,000	2.6%	3.2%	
05-000000	Total Private	706,900	710,600	691,600	-3,700	-0.5%	-1.4%	15,300	2.2%	3.8%	
06-000000	Goods Producing	141,600	144,300	140,900	-2,700	-1.9%	0.5%	700	0.5%	4.8%	
07-000000	Service Providing. (Inc. Gov)	698,400	700,300	678,100	-1,900	-0.3%	-1.6%	20,300	3.0%	2.9%	
08-000000	Private Service Providing	565,300	566,300	550,700	-1,000	-0.2%	-1.9%	14,600	2.7%	3.6%	
10-000000	Natural Resources	4,000	4,100	3,800	-100	-2.4%	-3.9%	200	5.3%	7.2%	
20-000000	Construction	65,700	68,400	64,200	-2,700	-3.9%	2.7%	1,500	2.3%	8.1%	
20-236000	Construction of Buildings	16,100	16,500	15,500	-400	-2.4%	1.7%	600	3.9%	9.0%	
20-236100	Residential Building Const.	9,500	9,700	9,500	-200	-2.1%	1.6%	0	0.0%	10.9%	
20-237000	Heavy And Civil Const.	7,100	7,700	7,000	-600	-7.8%	7.0%	100	1.4%	6.6%	
20-238000	Specialty Trade Contractors	42,500	44,200	41,700	-1,700	-3.8%	2.4%	800	1.9%	8.1%	
20-238100	Foundtn, Strctre, Bldng Contract	11,000	11,500	10,900	-500	-4.3%	3.0%	100	0.9%	8.7%	
20-238200	Building Equipment Contractors	16,500	16,900	15,800	-400	-2.4%	0.4%	700	4.4%	8.1%	
20-238300	Building Finishing Contractors	8,000	8,300	7,900	-300	-3.6%	1.2%	100	1.3%	7.8%	
20-238900	Other Specialty Trade Contractors	7,000	7,500	7,100	-500	-6.7%	7.5%	-100	-1.4%	7.9%	
30-000000	Manufacturing	71,900	71,800	72,900	100	0.1%	-1.0%	-1,000	-1.4%	2.3%	
31-000000	Durable Goods	41,700	41,500	41,900	200	0.5%	-0.9%	-200	-0.5%	2.1%	
31-334000	Computer And Elect. Manufact.	11,400	11,400	11,000	0	0.0%	-0.3%	400	3.6%	-2.0%	
31-334100	Computer And Periph. Manufact.	1,700	1,700	1,600	0	0.0%	-1.0%	100	6.3%	-5.9%	
31-334400	Semiconductor & Othr Elect. Manuf.	8,300	8,200	7,900	100	1.2%	0.0%	400	5.1%	-2.5%	
32-000000	Nondurable Goods	30,200	30,300	31,000	-100	-0.3%	-1.0%	-800	-2.6%	2.6%	
32-311000	Food Manufacturing	19,700	19,700	19,800	0	0.0%	-1.1%	-100	-0.5%	2.3%	
32-311400	Fruit & Vegetable Manufacturing	6,900	6,900	6,900	0	0.0%	-1.1%	0	0.0%	0.0%	
40-000000	Trade, Transportation, & Utilities	160,400	160,800	160,100	-400	-0.2%	-1.4%	300	0.2%	3.4%	
41-000000	Wholesale Trade	36,900	36,800	34,400	100	0.3%	0.3%	2,500	7.3%	4.1%	
41-423000	Merchant Whlsalers Dur. Gds	19,400	19,300	18,200	100	0.5%	0.0%	1,200	6.6%	4.4%	
41-424000	Merchant Whlsalers Nondur. Gds	15,100	15,300	14,500	-200	-1.3%	0.4%	600	4.1%	4.1%	
42-000000	Retail Trade	92,200	92,600	93,400	-400	-0.4%	-1.7%	-1,200	-1.3%	2.2%	
42-441000	Motor Vehicle And Parts Dealers	14,600	14,700	14,700	-100	-0.7%	-1.2%	-100	-0.7%	1.7%	
42-444000	Bldng Materials & Garden Supplies	10,300	10,500	10,900	-200	-1.9%	3.8%	-600	-5.5%	4.7%	
42-445000	Food And Beverage Stores	17,400	17,400	16,900	0	0.0%	0.0%	500	3.0%	3.9%	
42-445100	Grocery Stores	15,200	15,300	14,900	-100	-0.7%	0.6%	300	2.0%	3.6%	
42-452000	General Merchandise Stores	19,600	19,200	19,600	400	2.1%	-0.9%	0	0.0%	3.8%	
42-452200	Department Stores	3,900	3,900	3,900	0	0.0%	-8.6%	0	0.0%	3.1%	
42-452300	Other General Merchandise Stores	15,700	15,300	15,700	400	2.6%	1.3%	0	0.0%	5.3%	
43-000000	Transport., Wrhouse, And Utilities	31,300	31,400	32,300	-100	-0.3%	-2.1%	-1,000	-3.1%	6.8%	
43-220000	Utilities	3,100	3,200	3,100	-100	-3.1%	0.0%	0	0.0%	0.7%	
43-400089	Transportation And Warehousing	28,200	28,200	29,200	0	0.0%	-2.4%	-1,000	-3.4%	7.7%	
43-484000	Truck Transportation	10,400	10,500	10,600	-100	-1.0%	-1.0%	-200	-1.9%	1.4%	
43-484100	General Freight Trucking	6,800	6,900	7,000	-100	-1.4%	-0.3%	-200	-2.9%	1.2%	
50-000000	Information	9,400	9,800	8,800	-400	-4.1%	-2.3%	600	6.8%	1.3%	
50-517000	Telecommunications	2,200	2,200	2,200	0	0.0%	0.0%	0	0.0%	-2.2%	
55-000000	Financial Activities	41,400	41,300	40,800	100	0.2%	-0.2%	600	1.5%	3.6%	
55-520000	Finance And Insurance	30,300	30,200	29,900	100	0.3%	-0.3%	400	1.3%	2.7%	
55-522000	Credit Intermediation Activities	13,200	13,100	13,200	100	0.8%	-0.8%	0	0.0%	1.8%	
55-524000	Insurance Carriers Activities	13,300	13,200	13,400	100	0.8%	-0.3%	-100	-0.7%	2.5%	
55-530000	Real Estate And Rental And Leasing	11,100	11,100	10,900	0	0.0%	0.0%	200	1.8%	6.4%	
60-000000	Professional And Business Services	109,600	110,100	106,900	-500	-0.5%	0.7%	2,700	2.5%	3.3%	
60-540000	Prof., Scientific, Technical Services	51,500	51,300	48,900	200	0.4%	0.0%	2,600	5.3%	5.8%	
60-541300	Architectural, Engineering, Services	9,100	9,300	8,400	-200	-2.2%	1.9%	700	8.3%	6.3%	
60-541700	Scientific Research & Development	8,300	8,400	7,700	-100	-1.2%	0.3%	600	7.8%	5.1%	
60-550000	Mgmnt. Of Companies & Enterprises	8,300	8,400	8,000	-100	-1.2%	-0.3%	300	3.8%	4.6%	
60-560000	Admin., Support, Waste Mgmnt Serv.	49,800	50,400	50,000	-600	-1.2%	1.4%	-200	-0.4%	1.0%	
60-561000	Administrative, Support Services	44,900	45,400	45,400	-500	-1.1%	1.5%	-500	-1.1%	0.6%	
60-561300	Employment Services	15,600	15,500	15,900	100	0.6%	-1.1%	-300	-1.9%	2.1%	
60-561400	Business Support Services	8,900	8,800	9,300	100	1.1%	-2.7%	-400	-4.3%	-5.8%	
60-561420	Telephone Call Centers	6,900	7,000	7,300	-100	-1.4%	-3.0%	-400	-5.5%	-5.8%	
60-561700	Services To Buildings And Dwellings	13,800	14,600	13,400	-800	-5.5%	10.3%	400	3.0%	4.5%	
65-000000	Education And Health Services	127,000	126,400	120,400	600	0.5%	-1.9%	6,600	5.5%	3.5%	
65-610000	Educational Services	17,500	17,000	15,200	500	2.9%	-5.8%	2,300	15.1%	5.5%	
65-620000	Health Care And Social Services	109,500	109,400	105,200	100	0.1%	-1.4%	4,300	4.1%	3.3%	
65-621000	Ambulatory Health Care	49,800	50,000	48,700	-200	-0.4%	-2.5%	1,100	2.3%	4.3%	
65-622000	Hospitals	27,200	27,100	26,000	100	0.4%	-0.3%	1,200	4.6%	2.3%	
65-622100	General Medical And Surgical	24,600	24,500	23,500	100	0.4%	0.3%	1,100	4.7%	3.0%	
65-623000	Nursing & Residential Care Facilities	15,300	15,200	14,400	100	0.7%	-1.3%	900	6.3%	-0.3%	
65-624000	Social Assistance	17,200	17,100	16,100	100	0.6%	-2.5%	1,100	6.8%	1.7%	
70-000000	Leisure And Hospitality	89,700	90,500	86,700	-800	-0.9%	-6.1%	3,000	3.5%	8.6%	
70-710000	Arts, Entertainment, Recreation	13,200	13,900	13,000	-700	-5.0%	-1.5%	200	1.5%	13.5%	
70-713000	Amusement Gambling, Recreation	11,000	11,600	10,800	-600	-5.2%	-4.4%	200	1.9%	14.0%	
70-713900	Other Amusement & Recreation Ind.	9,800	9,900	9,200	-100	-1.0%	-9.7%	600	6.5%	10.9%	
70-720000	Accommodation And Food Services	76,500	76,600	73,700	-100	-0.1%	-6.9%	2,800	3.8%	7.9%	
70-721000	Accommodations	10,500	10,300	10,100	200	1.9%	-10.3%	400	4.0%	10.7%	
70-722000	Food Service And Drinking Places	66,000	66,300	63,600	-300	-0.5%	-6.3%	2,400	3.8%	7.6%	
70-722511	Full Service Restaurants	24,500	25,000	25,500	-500	-2.0%	-10.1%	-1,000	-3.9%	14.8%	
70-722590	Limited Service Restaurants	35,400	35,300	33,300	100	0.3%	-2.5%	2,100	6.3%	5.9%	
80-000000	Other Services	27,800	27,400	27,000	400	1.5%	-2.5%	800	3.0%	2.4%	
80-811000	Repair And Maintenance	9,100	9,200	8,800	-100	-1.1%	-0.2%	300	3.4%	3.7%	
80-811100	Automotive Repair & Maintenance	6,500	6,500	6,400	0	0.0%	-0.6%	100	1.6%	4.1%	
90-000000	Total Government	133,100	134,000	127,400	-900	-0.7%	-0.6%	5,700	4.5%	0.5%	
90-910000	Federal Government	12,900	13,100	12,600	-200	-1.5%	2.7%	300	2.4%	0.7%	
90-940000	State And Local Government	120,200	120,900	114,800	-700	-0.6%	-0.9%	5,400	4.7%	0.4%	
90-920000	State Government	34,300	34,600	30,700	-300	-0.9%	-1.5%	3,600	11.7%	-0.2%	
90-921611	State Education	19,100	19,300	15,700	-200	-1.0%	-3.5%	3,400	21.7%	0.1%	
90-929999	State Administration	15,200	15,300	15,000	-100	-0.7%	0.5%	200	1.3%	-0.4%	
90-930000	Local Government	85,900	86,300	84,100	-400	-0.5%	-0.7%	1,800	2.1%	0.7%	
90-931611	Local Education	47,300	47,200	46,100	100	0.2%	-1.5%	1,200	2.6%	0.7%	
90-939999	Local Administration	38,600	39,100	38,000	-500	-1.3%	0.3%	600	1.6%	0.7%	

\* = Average is based on the previous five years of experience.

# BLS CES

## PRELIMINARY AND FINAL ESTIMATE COMPARISON

March - 2023

NAICS	Category	Final	Preliminary	Change	%
00-000000	TOTAL NONFARM	844,600	835,700	8,900	1.1%
05-000000	TOTAL PRIVATE	710,600	703,400	7,200	1.0%
06-000000	GOODS PRODUCING	144,300	142,000	2,300	1.6%
07-000000	SERVICE PROVIDING. (INC. GOV)	700,300	693,700	6,600	1.0%
08-000000	PRIVATE SERVICE PROVIDING	566,300	561,400	4,900	0.9%
10-000000	NATURAL RESOURCES	4,100	4,000	100	2.5%
20-000000	CONSTRUCTION	68,400	66,400	2,000	3.0%
20-236000	CONSTRUCTION OF BUILDING	16,500	16,400	100	0.6%
20-236100	RESIDENTIAL BUILDING CONST.	9,700	9,700	0	0.0%
20-237000	HEAVY AND CIVIL CONST.	7,700	7,100	600	8.5%
20-238000	SPECIALTY TRADE CONTRACTORS	44,200	42,900	1,300	3.0%
20-238100	FOUNDTN, STRCTRE, BLDING CONTRACT	11,500	11,100	400	3.6%
20-238200	BUILDING EQUIPMENT CONTRACTORS	16,900	16,800	100	0.6%
20-238300	BUILDING FINISHING CONTRACTORS	8,300	8,100	200	2.5%
20-238900	OTHER SPECIALTY TRADE CONTRACTORS	7,500	6,900	600	8.7%
30-000000	MANUFACTURING	71,800	71,600	200	0.3%
31-000000	DURABLE GOODS	41,500	41,400	100	0.2%
31-334000	COMPUTER AND ELECT. MANUFACT.	11,400	11,300	100	0.9%
31-334100	COMPUTER AND PERIPH. MANUFACT.	1,700	1,700	0	0.0%
31-334400	SEMICONDUCTER & OTHR ELECT. MANUF.	8,200	8,200	0	0.0%
32-000000	NONDURABLE GOODS	30,300	30,200	100	0.3%
32-311000	FOOD MANUFACTURING	19,700	19,600	100	0.5%
32-311400	FRUIT & VEGETABLE MANUFACTURING	6,900	6,900	0	0.0%
40-000000	TRADE, TRANSPORTATION, & UTILITIES	160,800	161,000	(200)	-0.1%
41-000000	WHOLESALE TRADE	36,800	37,200	(400)	-1.1%
41-423000	MERCHANT WHLSALERS DUR. GDS	19,300	19,600	(300)	-1.5%
41-424000	MERCHANT WHLSALERS NONDUR. GDS	15,300	15,300	0	0.0%
42-000000	RETAIL TRADE	92,600	92,900	(300)	-0.3%
42-441000	MOTOR VEHICLE AND PARTS DEALERS	14,700	14,700	0	0.0%
42-444000	BLDNG MATERIALS & GARDEN SUPPLIES	10,500	10,000	500	5.0%
42-445000	FOOD AND BEVERAGE STORES	17,400	17,600	(200)	-1.1%
42-445100	GROCERY STORES	15,300	15,400	(100)	-0.6%
42-452000	GENERAL MERCHANDISE STORES	19,200	19,500	(300)	-1.5%
42-452200	DEPARTMENT STORES	3,900	4,000	(100)	-2.5%
42-452300	OTHER GENERAL MERCHANDISE STORES	15,300	15,500	(200)	-1.3%
43-000000	TRANSPORT., WRHOUSE, AND UTILITIES	31,400	30,900	500	1.6%
43-220000	UTILITIES	3,200	3,100	100	3.2%
43-400089	TRANSPORTATION AND WAREHOUSING	28,200	27,800	400	1.4%
43-484000	TRUCK TRANSPORTATION	10,500	10,100	400	4.0%
43-484100	GENERAL FREIGHT TRUCKING	6,900	6,700	200	3.0%
50-000000	INFORMATION	9,800	9,200	600	6.5%
50-517000	TELECOMMUNICATIONS	2,200	2,200	0	0.0%
55-000000	FINANCIAL ACTIVITIES	41,300	41,400	(100)	-0.2%
55-520000	FINANCE AND INSURANCE	30,200	30,200	0	0.0%
55-522000	CREDIT INTERMEDIATION ACTIVITIES	13,100	13,100	0	0.0%
55-524000	INSURANCE CARRIERS ACTIVITIES	13,200	13,300	(100)	-0.8%
55-530000	REAL ESTATE AND RENTAL AND LEASING	11,100	11,200	(100)	-0.9%
60-000000	PROFESSIONAL AND BUSINESS SERVICES	110,100	107,700	2,400	2.2%
60-540000	PROF., SCIENTIFIC, TECHNICAL SERVICES	51,300	51,100	200	0.4%
60-541300	ARCHITECTURAL, ENGINEERING, SERVICES	9,300	9,100	200	2.2%
60-541700	SCIENTIFIC RESEARCH & DEVELOPMENT	8,400	8,300	100	1.2%
60-550000	MGMNT. OF COMPANIES & ENTERPRISES	8,400	8,300	100	1.2%
60-560000	ADMIN., SUPPORT, WASTE MGMNT SERV.	50,400	48,300	2,100	4.3%
60-561000	ADMINISTRATIVE, SUPPORT SERVICES	45,400	43,400	2,000	4.6%
60-561300	EMPLOYMENT SERVICES	15,500	15,300	200	1.3%
60-561400	BUSINESS SUPPORT SERVICES	8,800	8,800	0	0.0%
60-561420	TELEPHONE CALL CENTERS	7,000	6,800	200	2.9%
60-561700	SERVICES TO BUILDINGS AND DWELLINGS	14,600	12,800	1,800	14.1%
65-000000	EDUCATION AND HEALTH SERVICES	126,400	125,900	500	0.4%
65-610000	EDUCATIONAL SERVICES	17,000	17,300	(300)	-1.7%
65-620000	HEALTH CARE AND SOCIAL SERVICES	109,400	108,600	800	0.7%
65-621000	AMBULATORY HEALTH CARE	50,000	49,800	200	0.4%
65-622000	HOSPITALS	27,100	26,800	300	1.1%
65-622100	GENERAL MEDICAL AND SURGICAL	24,500	24,300	200	0.8%
65-623000	NURSING & RESIDENTIAL CARE FACILITIES	15,200	15,100	100	0.7%
65-624000	SOCIAL ASSISTANCE	17,100	16,900	200	1.2%
70-000000	LEISURE AND HOSPITALITY	90,500	88,400	2,100	2.4%
70-710000	ARTS, ENTERTAINMENT, RECREATION	13,900	13,000	900	6.9%
70-713000	AMUSEMENT GAMBLING, RECREATION	11,600	10,900	700	6.4%
70-713900	OTHER AMUSEMENT & RECREATION IND.	9,900	9,700	200	2.1%
70-720000	ACCOMMODATION AND FOOD SERVICES	76,600	75,400	1,200	1.6%
70-721000	ACCOMMODATIONS	10,300	10,400	(100)	-1.0%
70-722000	FOOD SERVICE AND DRINKING PLACES	66,300	65,000	1,300	2.0%
70-722511	FULL SERVICE RESTAURANTS	25,000	24,300	700	2.9%
70-722590	LIMITED SERVICE RESTAURANTS	35,300	34,500	800	2.3%
80-000000	OTHER SERVICES	27,400	27,800	(400)	-1.4%
80-811000	REPAIR AND MAINTENANCE	9,200	9,000	200	2.2%
80-811100	AUTOMOTIVE REPAIR & MAINTENANCE	6,500	6,500	0	0.0%
90-000000	TOTAL GOVERNMENT	134,000	132,300	1,700	1.3%
90-910000	FEDERAL GOVERNMENT	13,100	12,500	600	4.8%
90-940000	STATE AND LOCAL GOVERNMENT	120,900	119,800	1,100	0.9%
90-920000	STATE GOVERNMENT	34,600	34,300	300	0.9%
90-921611	STATE EDUCATION	19,300	19,100	200	1.0%
90-929999	STATE ADMINISTRATION	15,300	15,200	100	0.7%
90-930000	LOCAL GOVERNMENT	86,300	85,500	800	0.9%
90-931611	LOCAL EDUCATION	47,200	46,900	300	0.6%
90-939999	LOCAL ADMINISTRATION	39,100	38,600	500	1.3%