

Unemployment Insurance Claimant Characteristics February 2023



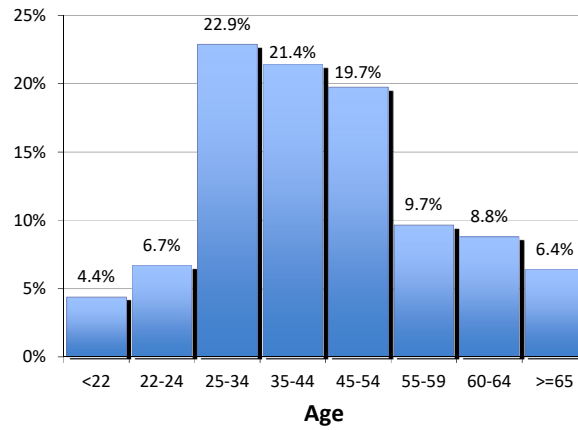
Communications & Research Bureau

Gender of the Insured Unemployed

Male	7,042	72.5%
Female	2,666	27.5%
N/A	0	0.00%
Total	9,708	100%

Age of the Insured Unemployed

<22	426	4.4%
22-24	650	6.7%
25-34	2,223	22.9%
35-44	2,078	21.4%
45-54	1,917	19.7%
55-59	938	9.7%
60-64	853	8.8%
>=65	622	6.4%
INA	1	INA
Total	9,708	100%



Race of the Insured Unemployed

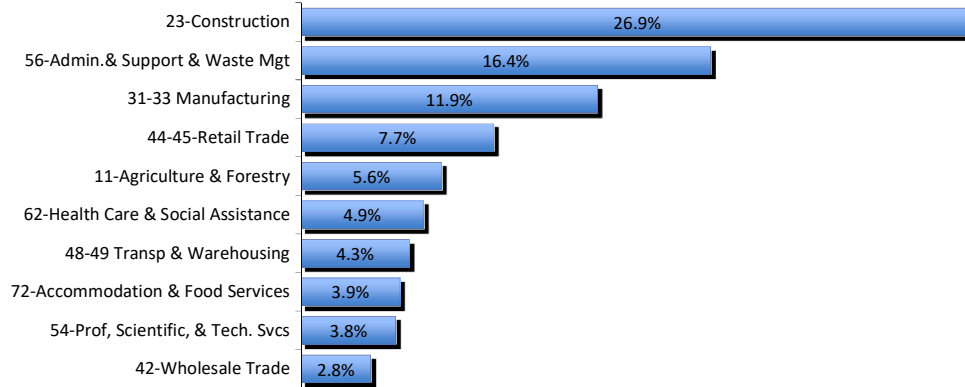
Native Am.	933	8.7%
Asian	157	1.5%
African Am.	295	2.8%
Pacific Islander	142	1.3%
White	6,141	57.3%
INA	3,052	28.5%
* Total	10,720	100%

Ethnicity of the Insured Unemployed

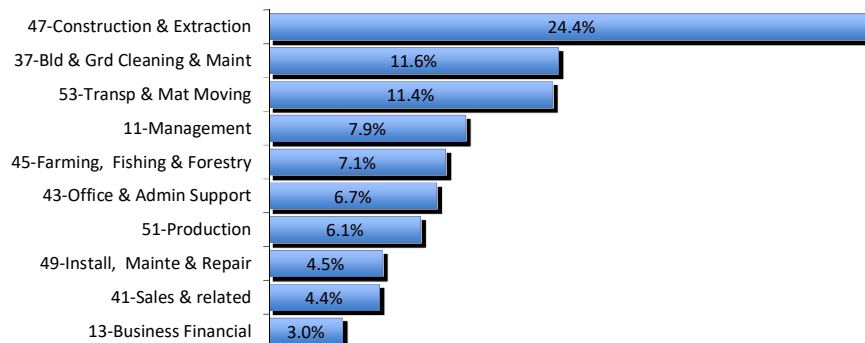
Hispanic/Latino	2,015	20.8%
Non-Hispanic/Latino	6,613	68.1%
INA	1,080	11.1%
Total	9,708	100.0%

* Some Claimants choose more than one race category

What industries did the claimants work in?



What occupations did the claimants hold?



Unemployment Insurance Claimant Characteristics

February 2023



Communications & Research Bureau

Demographics	February 2023		January 2023		Monthly Difference	February 2022		Yearly Difference
Gender:								
Male	7,042	72.5%	7,521	74.4%	-479	5,928	75.6%	1114
Female	2,666	27.5%	2,589	25.6%	77	1,913	24.4%	753
INA	0	0.0%	1	0.0%	-1	1	0.0%	-1
Total	9,708		10,111		-403	7,842		1866
Race: NOTE: Claimants may choose more than one Race category								
Native American	933	N/A	977	N/A	-44	874	N/A	59
Asian	157	N/A	170	N/A	-13	144	N/A	13
African American	295	N/A	273	N/A	22	229	N/A	66
Pacific Islander	142	N/A	168	N/A	-26	110	N/A	32
White	6,141	N/A	9,961	N/A	-3,820	5,735	N/A	406
INA	3,052	N/A	2,862	N/A	190	1,919	N/A	1133
Ethnicity:								
Hispanic/Latino	2,015	20.8%	1,862	18.4%	153	1,574	20.1%	441
Non-Hispanic/Latino	6,613	68.1%	7,026	69.5%	-413	5,277	67.3%	1336
INA	1,080	11.1%	1,223	12.1%	-143	991	12.6%	89
Age:								
<22	426	4.4%	456	4.5%	-30	336	4.3%	90
22-24	650	6.7%	680	6.7%	-30	419	5.3%	231
25-34	2,223	22.9%	2,365	23.4%	-142	1,609	20.5%	614
35-44	2,078	21.4%	2,169	21.5%	-91	1,603	20.4%	475
45-54	1,917	19.7%	1,862	18.4%	55	1,486	18.9%	431
55-59	938	9.7%	961	9.5%	-23	881	11.2%	57
60-64	853	8.8%	856	8.5%	-3	790	10.1%	63
>=65	622	6.4%	752	7.4%	-130	714	9.1%	-92
Total	9,707		10,101		-394	7,838		1869

Unemployment Insurance Claimant Characteristics *

February 2023



Communications & Research Bureau

Industry	February 2023	January 2023	Monthly Difference	February 2022	Yearly Difference
23-Construction	2,614 27%	2,845 28%	-231	2,105 27%	509
56-Admin. & Support & Waste Mgt	1,591 16%	1,645 16%	-54	1,491 19%	100
31-33 Manufacturing	1,152 12%	1,172 12%	-20	634 8%	518
44-45-Retail Trade	749 8%	732 7%	17	514 7%	235
11-Agriculture & Forestry	545 6%	517 5%	28	566 7%	-21
62-Health Care & Social Assistance	474 5%	389 4%	85	373 5%	101
48-49 Transp & Warehousing	419 4%	401 4%	18	268 3%	151
72-Accommodation & Food Services	383 4%	345 3%	38	279 4%	104
54-Prof, Scientific, & Tech. Svcs	366 4%	354 4%	12	215 3%	151
42-Wholesale Trade	269 3%	280 3%	-11	198 3%	71
52-Finance & Insurance	222 2%	241 2%	-19	110 1%	112
92-Public Administration	195 2%	211 2%	-16	229 3%	-34
71-Arts, Entertainment & Recreation	185 2%	182 2%	3	179 2%	6
81-Other Services (ex Public Admin)	135 1%	137 1%	-2	125 2%	10
53-Real Estate & Rental & Leasing	121 1%	115 1%	6	69 1%	52
51-Information	96 1%	89 1%	7	30 0%	66
21-Mining	86 1%	108 1%	-22	83 1%	3
61-Educational Services	57 1%	65 1%	-8	69 1%	-12
22-Utilities	42 0%	36 0%	6	51 1%	-9
55-Mgt of Companies & Enterprises	7 0%	6 0%	1	12 0%	-5
INA*	0 0%	241 2%	-241	242 3%	-242
Total	9,708	10,111	-403	7,842	1,866

Occupations	February 2023	January 2023	Monthly Difference	February 2022	Yearly Difference
47-Construction & Extraction	2,364 24%	2,592 26%	-228	1,860 24%	504
37-Bld & Grd Cleaning & Maint	1,129 12%	1,121 11%	8	1,079 14%	50
53-Transp & Mat Moving	1,106 11%	1,207 12%	-101	910 12%	196
11-Management	768 8%	762 8%	6	548 7%	220
45-Farming, Fishing & Forestry	689 7%	671 7%	18	704 9%	-15
43-Office & Admin Support	654 7%	669 7%	-15	447 6%	207
51-Production	592 6%	628 6%	-36	308 4%	284
49-Install, Mainte & Repair	441 5%	470 5%	-29	347 4%	94
41-Sales & related	430 4%	439 4%	-9	268 3%	162
13-Business Financial	287 3%	269 3%	18	133 2%	154
35-Food Prep & Related	262 3%	235 2%	27	229 3%	33
17-Architect & Engineer	124 1%	143 1%	-19	102 1%	22
31-Healthcare Support	114 1%	111 1%	3	98 1%	16
15-Computer Math	103 1%	82 1%	21	44 1%	59
29-Healthcare Pract & Tech	88 1%	82 1%	6	79 1%	9
27-Art Design, Entert Spt & Media	85 1%	89 1%	-4	47 1%	38
39-Personal Care & Svcs	76 1%	69 1%	7	70 1%	6
25-Ed Training & Library	73 1%	41 0%	32	68 1%	5
33-Protective Svcs	72 1%	79 1%	-7	65 1%	7
19-Life Phys Social	59 1%	57 1%	2	57 1%	2
21-Community & Social Svcs	42 0%	45 0%	-3	51 1%	-9
23-Legal	27 0%	30 0%	-3	16 0%	11
55-Military Specific	3 0%	4 0%	-1	2 0%	1
INA*	120 1%	216 2%	-96	310 4%	-190
Total	9,708	10,111	-403	7,842	1,866

* This data reflects UI claims characteristics for the pay period including the 12th of the month.